
Hydraulic Impact Breaker



**AR75 – Series
Model
AR75
&
AR75B**



Parts Manual AR-SERIES

Keep this manual in a convenient location so that it is easily accessible for future reference. Contact your Allied Dealer or the Allied Customer Service Department for replacement manuals. Inquiries regarding the content of this manual must include the effective date shown on inside cover.



PM103028



Contact Information
Allied Construction Products, LLC
3900 Kelley Ave
Cleveland, Ohio 44114

E-mail: sales@alliedcp.com
Tel: 216-431-2600
Fax: 216-431-2601

Revision History of Document 002063, 103028

Allied Construction Products, LLC, reserves the right to change, edit, delete or modify the content of this document, including descriptions, illustrations and specifications without prior notification. Specifications are based on published information at the time of publication. Go to www.alliedcp.com for product or document updates.

Summary of Changes for Parts Manual 002063

<u>Effective Date</u>	<u>Page</u>	<u>Description of Change</u>
	---	Original Issue of AR75 Parts Manual 002063
01/28/00	1,4,5,7,8,9	Revise the following: Update specifications, parts lists, art
12/08/00	1,10,11,14,15	Added BCS 1-Position SSU, Power Boom Mounting Configurations Revise the following: Update specifications, parts lists, art
10/05/01	1,9,10,11,20,21	Revise the following: Update specifications, parts lists, art
04/05/02	10,11,18,19,24-29	Update nomenclature, art, parts lists, CIMA decal
08/27/02	Throughout	Revise page numbering
02/03/02	20,21	Add N2 gas charging equipment
09/15/03	1,3,9,11	Update parts lists, dimension drawings
06/30/05	9	Add 571053 to parts list
01/31/11	---	Manual 002063 replaced by AR75B Manual 103028

Summary of Changes for Parts Manual 103028

<u>Effective Date</u>	<u>Page</u>	<u>Description of Change</u>
	---	Original Issue of AR75B Parts Manual 103028
Jun 10, 2003	10	Added Item Numbers to Drawing
Jun 30, 2005	9	Added P/N 571053
Jan 17, 2006	All	Revised Format
Aug 14, 2006	19	Correct Item 39 P/N
Aug 09, 2007		Revise Tune-Up Kit
Feb 27, 2008	9, 11, 13	Revise hydraulic adapter configuration
Jan 31, 2011	Throughout	Add AR75 information. In this manual, parts not common to both are identified "AR75 Only", "AR75B Only". Add information for "BR" family mounting. Correct Tune-up kit number.
Aug 13, 2012	17,22	Revise Table 4.7, Table 6.2 Seal Set Item 65 was part number 676200.

Table of Contents

<u>Section</u>	<u>Page</u>
Document Revisions.....	i
Table of Contents.....	ii
1.0 Introduction and Scope.....	1
1.1 Purpose of This Manual.....	1
1.2 About This Manual.....	1
1.3 How to Order Replacement Manuals	1
1.4 Additional Publications.....	1
2.0 Equipment Identification.....	3
2.1 Location of the Serial Number.....	3
2.2 Equipment Identification Tag.....	3
2.3 Record Equipment Identification for Future Reference.....	3
3.0 Safety and Identification Labels...	4
4.0 Parts Information.....	7
5.0 Tool Selection.....	18
5.1 Standard Tools.....	18
5.2 Specialty Tools.....	18
5.3 Tool & Bushing Lubricant.....	19
5.4 Chisel Paste.....	19
6.0 Service Kits.....	20
6.1 Tune-up Kit.....	20
6.2 Seal Set.....	21
6.3 N2 Gas Accumulator Charge Kit....	23
7.0 Mounting Information.....	24
<u>List of Figures</u>	<u>Page</u>
2-1 Equipment Identification Tag.....	3
2-2 Location of Equipment ID Tag.....	3
3-1 thru 3-12 Overview of Safety and Identification Labels.....	4
3-13 Decal Location.....	6

<u>List of Figures</u>	<u>Page</u>
4-1 BSF Housing Plate Configuration	7
4-2 BR Housing Plate Configuration....	7
4-3 BR Configuration and SSU1 Bracket	7

AR75 Housing Plates & Hardware

4-8 Parts View with BSF Housing.....	8
4-9 Parts View with BR Housing.....	9

AR75B Housing Plates & Hardware

4-8 Parts View with BSF Housing Plates	10
4-9 Parts View with BR Housing Plates	11
4-11 Parts View with SSU1 Bracket.....	12
4-9 Breaker Assembly.....	13
4-10 Hydraulic Connections.....	17
5-1 Tool Selection Standard & Specialty	18
5-2 Tool Diameter and Working Length	19
6-1 Tune-up Kit.....	20
6-2 Seal Set.....	21
6-3 N2 Gas Charge Kit.....	23
7-1 BR Housing Plates.....	24
7-2 Mounting Bracket & Hardware.....	24
7-3 Connection Plate.....	24

1.0 Introduction & Scope

1.1 Purpose of This Manual

The Parts Manual identifies each component of the Allied work tool including safety and information labels. Illustrations shown in the Parts Manual are not intended for use in the repair or service of the breaker.

1.2 About This Manual

This manual is an integral part of this product. Keep it in a convenient location so that it is easily accessible for future reference.

Table 1.1 About This Manual

Document ID.	PM103028
Category	Spare Parts
Current Status	See Inside Cover
Product Name:	Hydraulic Impact Breaker
Series	AR
Applicable Model[s]:	AR75, AR75
Years of Manufacture:	AR75 2000 - 2003 AR75B 2003 & above

Verify that the content in Table 1.1 corresponds with the information located on the Equipment's Identification Tag. Material presented in this Manual, including part name, part number, figures, descriptions and remarks, may not be suitable for models that are not listed in Table 1.1.

The content of this publication has been reviewed for accuracy. Allied Construction Products, LLC has endeavored to deliver the highest degree of accuracy possible. However, continuous improvement of our products is an Allied policy. The material in this publication, including descriptions, illustrations and specifications, describes the product at the time of its publication, and may not reflect the product in the future. Changes made to the content of this publication are recorded on the inside cover.

1.3 How To Order Replacement Publications

Replacement manuals can be ordered by contacting your Allied dealer service center. These manuals may also be viewed and downloaded at: www.alliedcp.com

1.4 Related Publications

This document is published solely for information purposes and should not be considered all-inclusive. If further information is required, contact your local Allied dealer or the Allied Customer Service Department.

Allied Construction Products, LLC offers the following publications for the product identified in Table 1.1.

Safety, Operation & Maintenance Manual 002065

Applicable Models: AR70 thru AR95B

The Safety, Operation and Maintenance Manual has been prepared to assist the operator and maintenance personnel with the information necessary for the safe and proper use of the Allied work tool.

Content in the Safety, Operation & Maintenance Manual includes:

Safety Information
Equipment Serial Number and Model Identification
Technical Data (Weight & dimensions)
Basic Guidelines for Installation and Set-up
Pre-Operation Inspection
How to Operate the Allied work tool
Maintenance Schedule
N2 Gas Charging Instructions
Tool and Guide Bushing – Lubrication, Inspection, Wear Limits and Replacement
Troubleshooting
Removal From Carrier, Transporting, Lifting & Storage

Repair Manual 101230

The Repair Manual has been prepared to assist the Service Technician with the information necessary for the disassembly & reassembly of the Breaker. Content includes:

Safety Information
Disassembly & Reassembly
Bolt Torque Specifications
Wear Limits of Parts
N2 Gas Charging Instructions
Bushing Replacement

1.0 Introduction and Scope – [cont'd]

1.4 Related Publications – cont'd

AEM Safety Manual

The Association of Equipment Manufacturers publishes a series of safe operation manuals, including Hydraulic Mounted Breakers. These are available by contacting:

Association of Equipment Manufacturers

Toll free 1-866-AEM-0442

E-mail: aem@aem.org

Website: www.aem.org

Ask for FORM MB-140. Or, contact Allied Construction Products, LLC for a copy of 953076

2.0 Equipment Identification

2.1 Location of the Serial Number

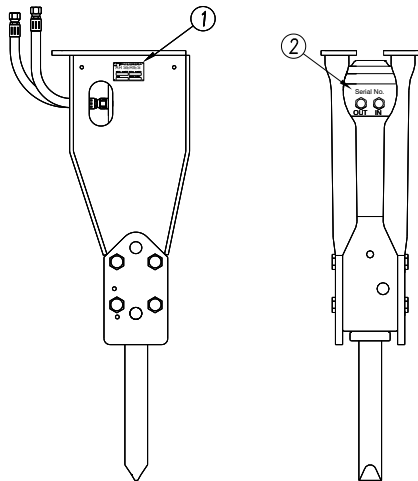


Figure 2-1 Equipment Identification

1) Equipment ID Tag, 2) Secondary location of serial number is

Refer to Figure 2-1. The Serial Number assigned to this equipment can be found in the following locations:

Stamped in the Equipment Identification Tag

Scribed In the Valve Housing Above the (IN) and (OUT) Ports.

2.2 Equipment Identification Tag

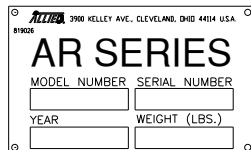


Fig 2-2 Equipment Identification Tag

The Equipment Identification Tag is affixed to the side of the housing box. It provides the following information:

- Allied logo and street address
- Product name
- Model number
- Serial number
- Year of manufacture
- Weight

Confirm that the information contained on the Tag corresponds with the information provided in Section 1, Table 1.1.

2.3 Owner's Record of the Equipment

Record the Model and Serial Number from the Equipment Identification Tag to the space provided below. Indicate the date in which the Allied equipment was placed into service.

Model / Part Number: AR75-BR / 101240

Model / Part Number: AR75-BSF / 658799

Model / Part Number: AR75B-BR / 571040

Model / Part Number: AR75B-BSF / 103030

Serial Number: _____

In service date: _____

Your local Allied dealer requires this information to better assist you with questions regarding parts, warranty, operation, maintenance, or repair.

Register this equipment by returning the completed warranty registration form to Allied.

Product Registration Date _____

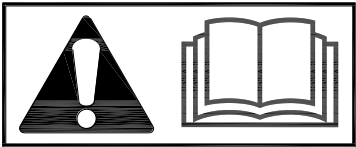
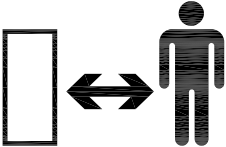
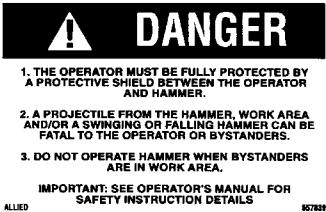
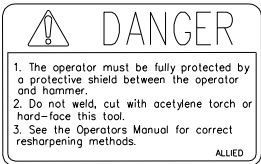


3.0 Safety and Information Labels [cont'd]

3.1 Label Description and Location

Information labels affixed to the Allied equipment include safety warnings, identification and instructions important to operation and service. Table 3.1 identifies and describes each label.


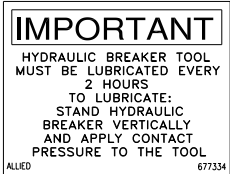


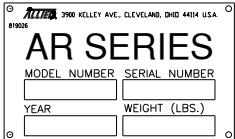
Keep all safety labels clean. Words and illustrations must be readable. Replace damaged or missing labels before operating this equipment. Refer to Table 3.2 for ordering information. Refer to Figure 3-14 for the label's location on the equipment.

Table 3.1 Identification of Safety and Information Labels

Figure	Label	Description
3-1		Read The Manual - Safety Alert Symbol with pictogram of open book. Gives notice for personnel to refer to the manual(s) for information and/or instructions.
3-2		Stay Clear - Pictogram of a person and object separated by an arrow. Alerts personnel and by-standers to maintain a safe distance from the Allied work tool during operation.
3-3		Flying Debris Hazard – Alerts personnel to the hazard of fragments becoming projectiles. A protective guard to shield the operator must be installed before operation of the breaker. Personnel are directed to the Operator's Manual for safety instructions. NOTE: A smaller sized version of this decal is to be displayed in a conspicuous location inside the operator's cab.
3-4		Personal Protection Equipment / Tool Re-sharpening – Alerts personnel to provide protective shielding between the operator and breaker. It also warns against welding, cutting, or hard-facing the tool. Personnel are directed to the Operator's Manual for approved re-sharpening methods.
3-5		Pressurized Nitrogen Accumulator – Alerts personnel to the accumulator, warning of nitrogen gas under pressure. Directs personnel to the Operation and Maintenance Manual for service instructions.
3-6		Maximum Pressure – The equipment's maximum operating pressure specification.

3.0 Safety and Information Labels [cont'd]

Table 3.1 Identification of Safety and Information Labels – cont'd

Figure	Label	Description
3-7		Lift Point – Pictogram of hook identifies approved lift points.
3-8		Tool Lubrication – Instructions for re-lubrication, including frequency and the required position of the breaker before tool is lubricated.
3-9		ALLIED Logo - Decal is the Allied brand identifier and is a registered trademark of Allied Construction Products, LLC.
3-10	AR75, AR75B	Model – Decal identifies the specific model of the Allied equipment.
3-11		Oil Supply Line “PRESSURE” I.D. Tag – A red colored cable tie marked “PRESSURE LINE” is attached to the supply hose for ease of identification between hoses.
3-12		Equipment ID Tag - Contains identifying information about the Allied equipment, including: Manufacturer's name, address, product name, model number, serial number, year of manufacture, and weight.

3.0 Safety and Information Labels [cont'd]

Table 3.2.1 Safety and Identification Labels

Item	Part No.	Description	Qty	Remarks / Specifications
---	981219	Label Set - AR75	1-SET	SET includes 1-12
---	103027	Label Set - AR75B	1-SET	SET includes 1-12
1	657838	Decal – Tool Sharpening	1	Place one of these in conspicuous location inside cab
2	657839	Decal – Danger (Small)	2	
3	657841	Decal – Stay Clear	2	
4	672545	Decal – Max Operating Pressure	1	
5	676649	Decal – Allied “A”	2	
6	677334	Decal – Lube w/ Tool In	1	
7	676982	Decal – Lift Point	2	
8	676984	Decal – Read Instructions	1	
9	658573	Decal – Model AR75	1	
	103033	Decal – Model AR75B	1	
10	658658	Decal – CIMA Energy	1	Attach Tag to Pressure Line
11	818676	Pressure ID Tag	1	
12	102756	Decal – Warning Pressurized Accumulator	1	
13	819026	Equipment ID Plate	1	Item 13 not included in SET

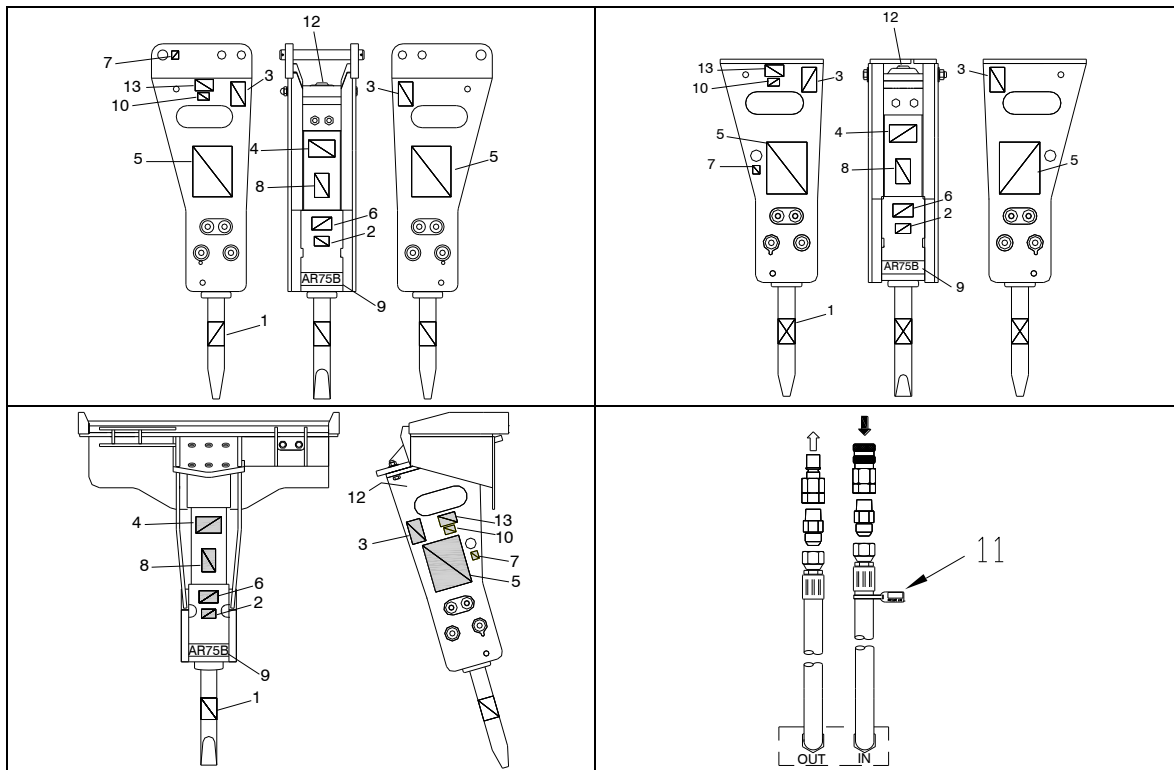


Fig. 3-13 Decal Locations

4.0 Parts Information

IMPORTANT PLEASE READ. Prior to ordering parts, it's important to confirm your model. Differences with components exist between the AR75 and AR75B. Carefully read the full table description and figure caption.

4.1 Overview of Housing Plates

Housing Plate options for the AR75-Series are identified in Figures 4-1 through Figure 4-3.

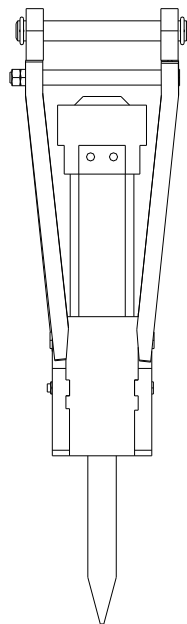


Fig. 4-1 BSF Housing Plates

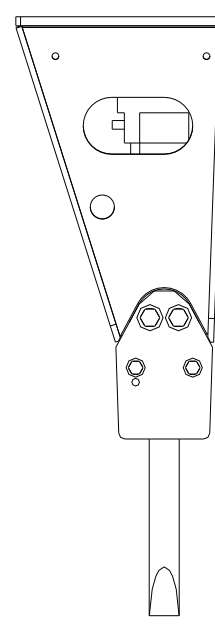
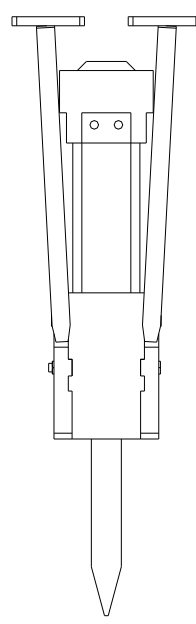
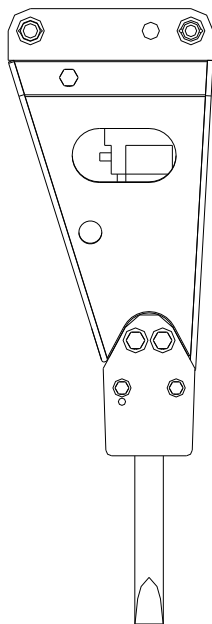


Fig. 4-2 BR Housing Plates

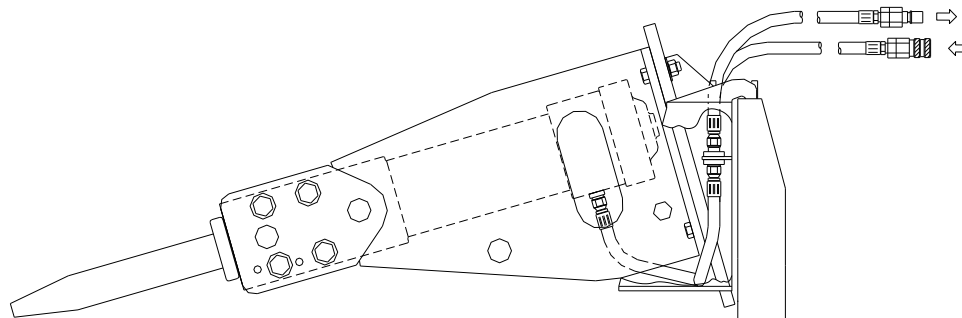


Fig. 4-3 BR Housing Plates and SSU1 Mounting Bracket

4.0 Parts Information

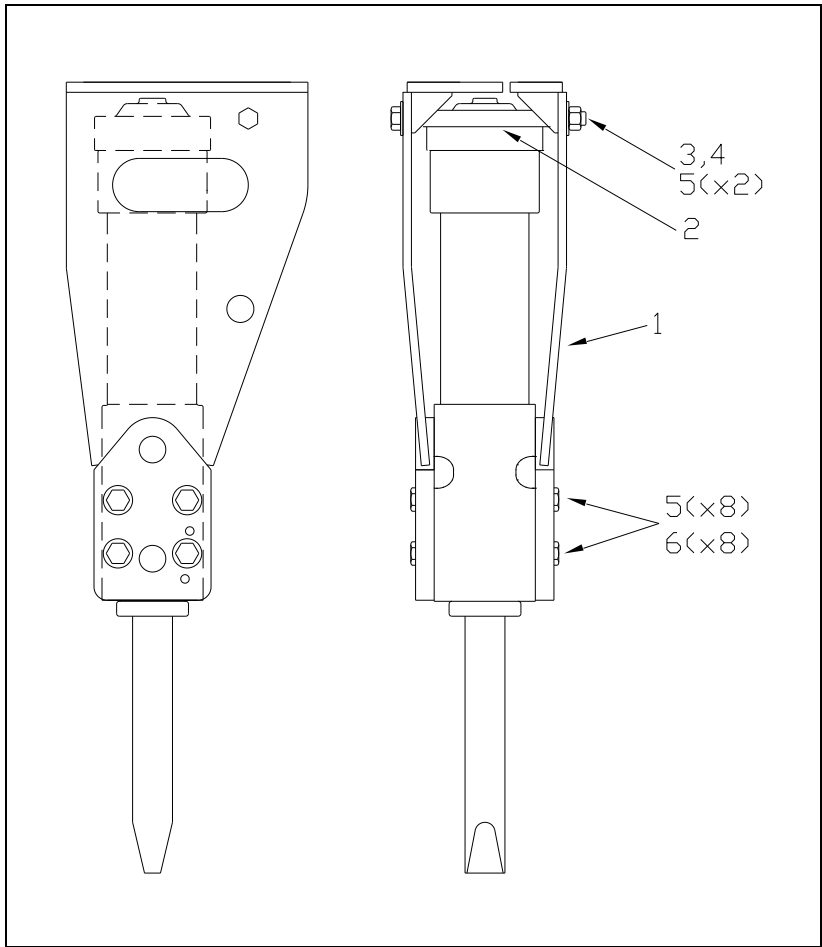


Fig. 4-4 AR75 With BCS Housing Plates

Table 4.1 AR75 Configured with BCS Housing Plates ***AR75 Only***

Item	Part No.	Description	Qty	Remarks / Specifications
---	101240	AR75 Breaker Assembly	---	Configured with BCS Housing Plates
1	100883	Housing Plates-BCS	1-Set	Set includes Left & Right-Hand Plates
2	100885	Spacer	1	
3	658527	Hex Head Bolt	1	
4	667220	Hex Nut	1	
5	658529	Lock Washer	10	
6	658525	Hex Head Bolt	8	

BCS Mounting Family

4.0 Parts Information

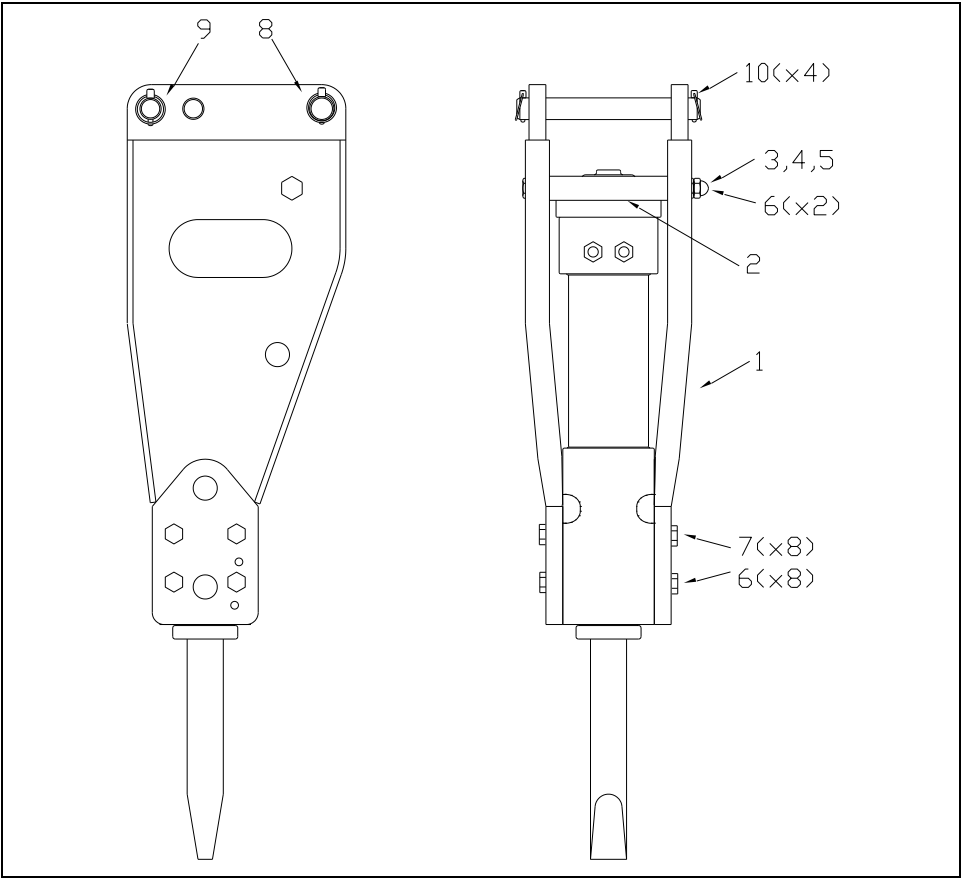


Fig. 4-5 AR75 With BSF Housing Plates

Table 4.2 AR75 Configured with BSF Housing Plates ***AR75 Only***

Item	Part No.	Description	Qty	Remarks / Specifications
---	658799	AR75 Breaker Assembly	---	Configured with BSF Housing Plates
1	658522	Side Plates - BSF Type Mounting	1-Set	Set includes Left & Right-Hand Plates
2	658532	Spacer	1	
3	658527	Hex Head Bolt	1	
4	667220	Hex Nut	1	
5	658530	Nut	1	
6	658529	Lock Washer	10	
7	658525	Hex Head Bolt	8	
8	653378	Mounting Pin	1	
9	617080	Mounting Pin	1	
10	617104	Klik Pin	4	

4.0 Parts Information – [cont’d]

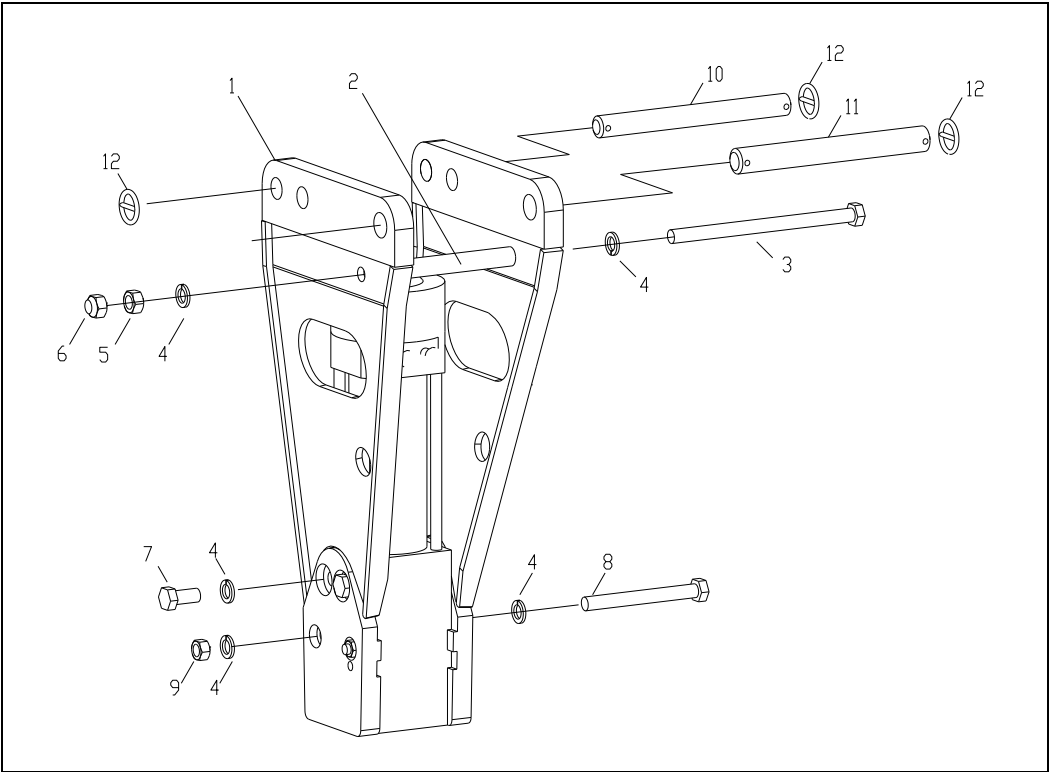


Fig. 4-6 AR75B With BSF Housing Plates

Table 4.3 AR75B Configured with BSF Housing Plates ***AR75B Only***

Item	Part No.	Description	Qty	Remarks / Specifications
---	103030	AR75B Breaker Assembly	---	Equipped with BSF Housing Plates
1	103154	Housing Plates - BSF	1-SET	Set includes LH & RH Plates
2	658532	Spacer	1	
3	658527	Hex Head Bolt	1	
4	658529	Lock Washer	10	
5	667220	Hex Nut	1	
6	658530	Nut	1	
7	658525	Hex Head Bolt	4	
8	658526	Hex Head Bolt	2	
9	90507	Hex Nut	2	
10	653378	Mounting Pin	1	1.75 Ø
11	617080	Mounting Pin	1	1.50 Ø
12	617104	Klik Pin	4	

4.0 Parts Information – [cont’d]

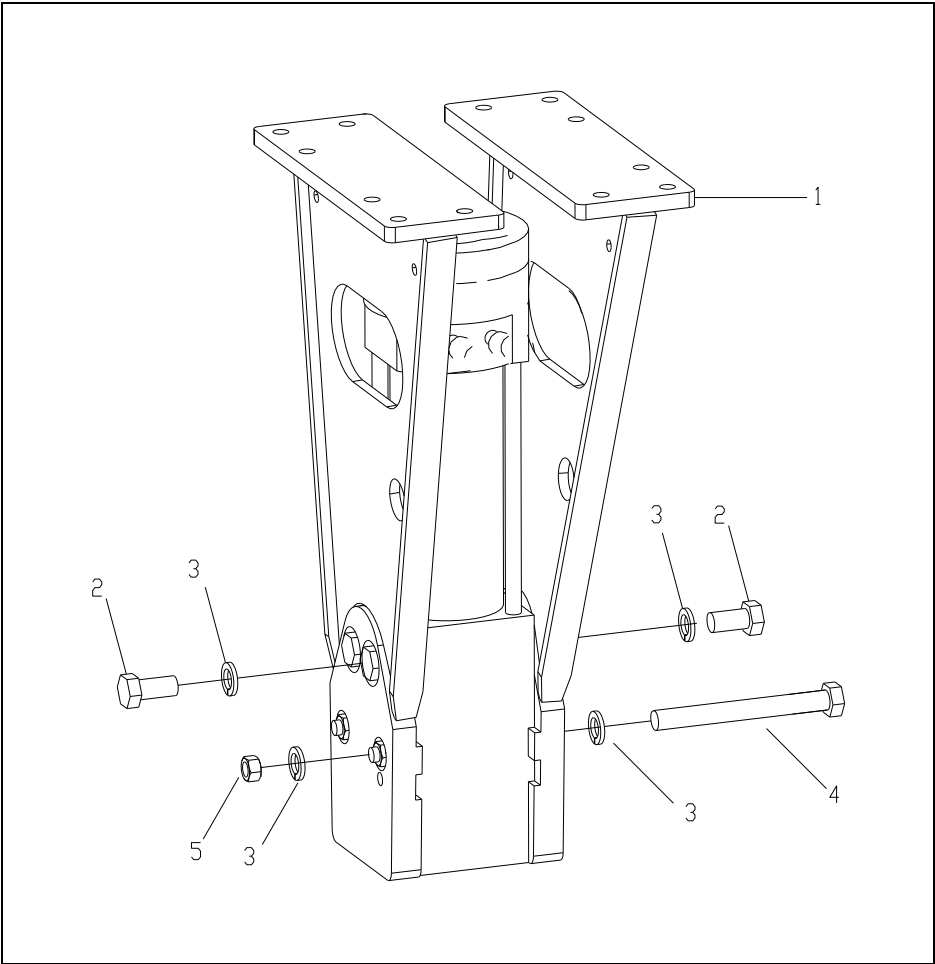
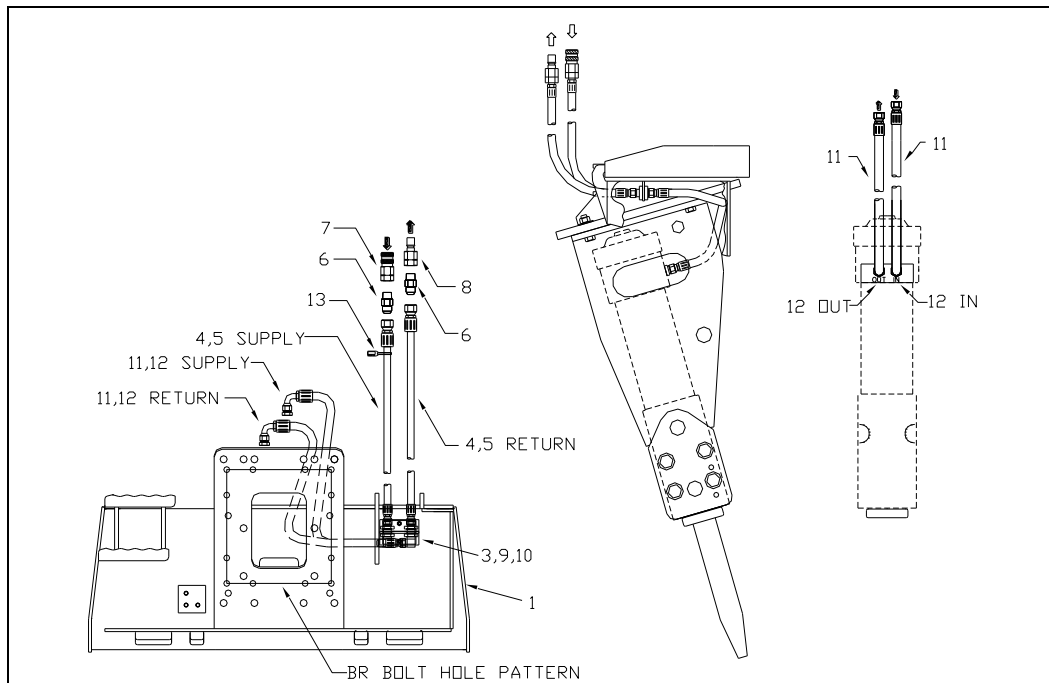


Fig. 4-7 AR75B With BR Housing Plates

Table 4.4 AR75B Configured with BR Housing Plates ***AR75B Only***

Item	Part No.	Description	Qty	Remarks / Specifications
---	571040	AR75B Breaker Assembly	---	Equipped with BR Housing Plates
1	571037	Side Plates - BR	1-SET	Set includes Left & Right-Hand Plates
2	658525	Hex Head Bolt	4	
3	658529	Lock Washer	8	
4	658526	Hex Head Bolt	2	
5	90507	Hex Nut	2	
---	571376	Threaded Stud	2	Use for adjustment. Remove after mounting bracket is installed
---	719239	Hex Nut	4	

4.0 Parts Information – [cont'd]**Fig. 4-8 SSU1 Mounting Kit****Table 4.5 Mounting Kit SSU – 1 Position**

Item	Part No.	Description	Qty	Remarks / Specifications
---	570641	Mounting Kit	1	Includes 1-12
1	570189	SSU1Mounting Bracket	1	Use with AR75B configured with BR housing plates. Refer to Table 7.1 for fasteners.
2	708793	Elbow – 90 Union Bulkhead	2	
3	100685	Bulkhead Bracket	1	
4	656950	Hose	2	
5	676792	Hose Protector	50	
6	656723	Adapter	2	
7	101571	Quick Disconnect Socket	1	
8	101570	Quick Disconnect Plug	1	
9	903703	Hex Bolt	2	
10	903713	Washer	2	
---	570854	Hose Group	1	Includes 11,12
11	658230	Hose	2	
12	759855	Elbow - 45	2	
13	818676	Pressure ID Tag	1	Attach Tag to Pressure Line

4.0 Parts Information – [cont'd]

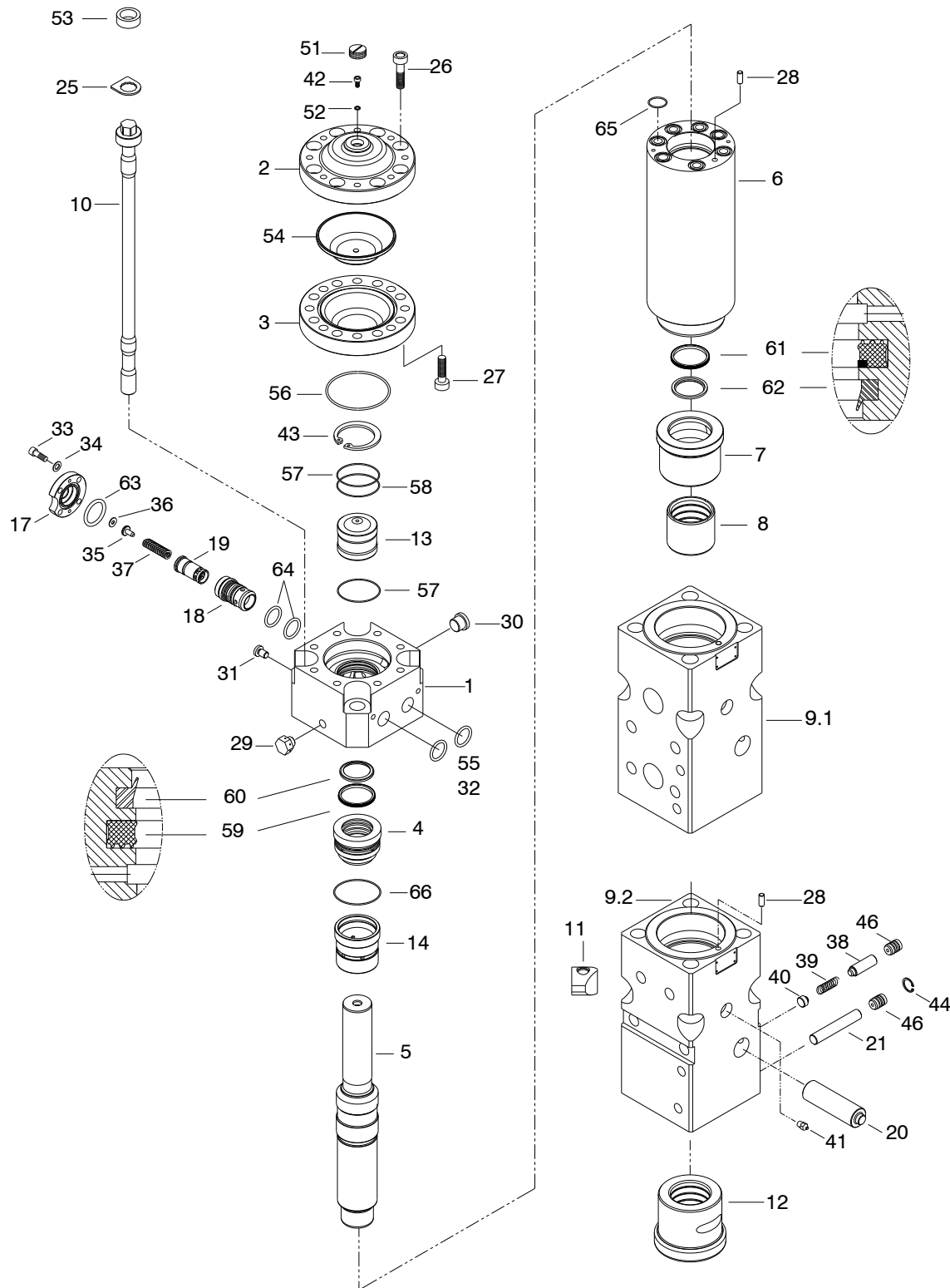


Fig. 4-9 Breaker Assembly – AR75, AR75B

4.0 Parts Information – [cont'd]**Table 4.6 Breaker Assembly AR75, AR75B**

Item	Part No.	Description	Qty	Remarks / Specifications
1	676176	Valve Housing	1	AR75 AR75B
2	676213	Accumulator Cover	1	
3	676214	Accumulator Bottom	1	
4	676231	Seal Housing	1	
5	676198	Piston	1	
6	676233	Cylinder Body	1	
7	676234	Tool Impact Ring	1	
8	676235	Upper Tool Bushing	1	
9.1	676236	Front Head		
9.2	103025			
10	676222	Tension Rod	4	
11	676237	Tension Rod Nut	4	
12	676240	Lower Tool Bushing	1	
13	676221	In Cover Bushing	1	
14	676232	Distributor	1	
15,16	---	---	---	15,16 Not Available
17	676230	Oper. Valve Cover	1	22,23,24,47 Refer to Section 5
18	676226	Oper. Valve Guide	1	
19	676227	Oper. Valve Spool	1	
20	676238	Tool Retainer Pin	1	
21	676190	Bushing Pin	1	
22	---	Tool Selection		
25	676223	Lock plate, Tension Rod	4	
26	676218	Socket Head Bolt	8	
27	676219	Socket Head Bolt	8	
28	676183	Guide Pin	2	
29	676215	Vent Plug	1	Refer to Table 4.7
30	676216	Socket Head Plug	1	
31	676159	Socket Head Plug	1	
32	676177	Adapter	2	
33	940587	Socket Head Bolt	4	

4.0 Parts Information – [cont'd]

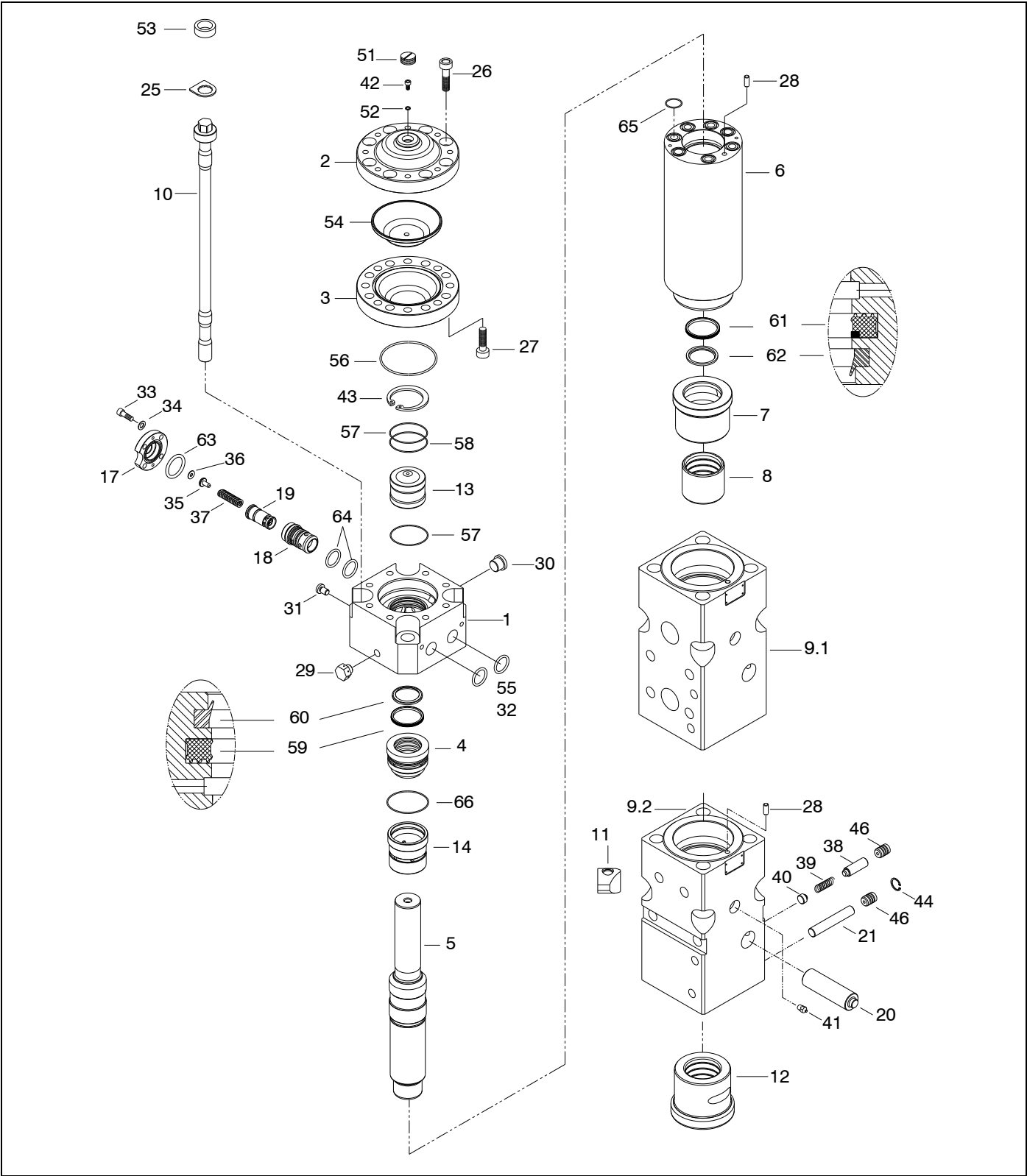


Fig. 4-9 Breaker Assembly – AR75, AR75B

4.0 Parts Information – [cont'd]**Table 4.6 Breaker Assembly AR75, AR75B**

Item	Part No.	Description	Qty	Remarks / Specifications
34	571053	Disc Lock washer	4	
35	676228	Oper. Valve Spring Guide	1	
36	676229	Shim Plate	1	
37	676225	Oper. Valve Spring	1	
38	676193	Plunger Pin	1	
39	676242	Plunger Spring	1	
40	676195	Plunger Pin Spring Guide	1	
41	816675	Lubrication Fitting	1	
42	676161	Threaded Plug	1	
43	676220	Snap Ring	1	
44	103034	Snap Ring	1	
45	---	---	---	Not Available
46	676243	Plunger Plug	2	
47	---	Tool Selection		22,23,24,47 Refer to Section 5
48	---	---	---	48,49,50 Not Available
51	676157	Protective Cap	1	
52	676201	U-sit Ring	1	
53	676224	Rubber Ring	4	
54	676217	Membrane	1	
55	676245	O-ring		Refer to Table 4.7
56	676247	O-Ring	1	
57	676248	O-Ring	2	
58	676250	Back-Up Ring	1	
59	676252	Piston Seal	1	Upper
60	676253	Piston Wiper	1	Upper
61	676255	Piston Seal	1	Lower
62	676256	Piston Wiper	1	Lower
63	676251	O-Ring	1	
64	676206	O-Ring	2	
65	B0607150	O-Ring	7	
66	676257	O-Ring	1	

4.0 Parts Information – [cont'd]

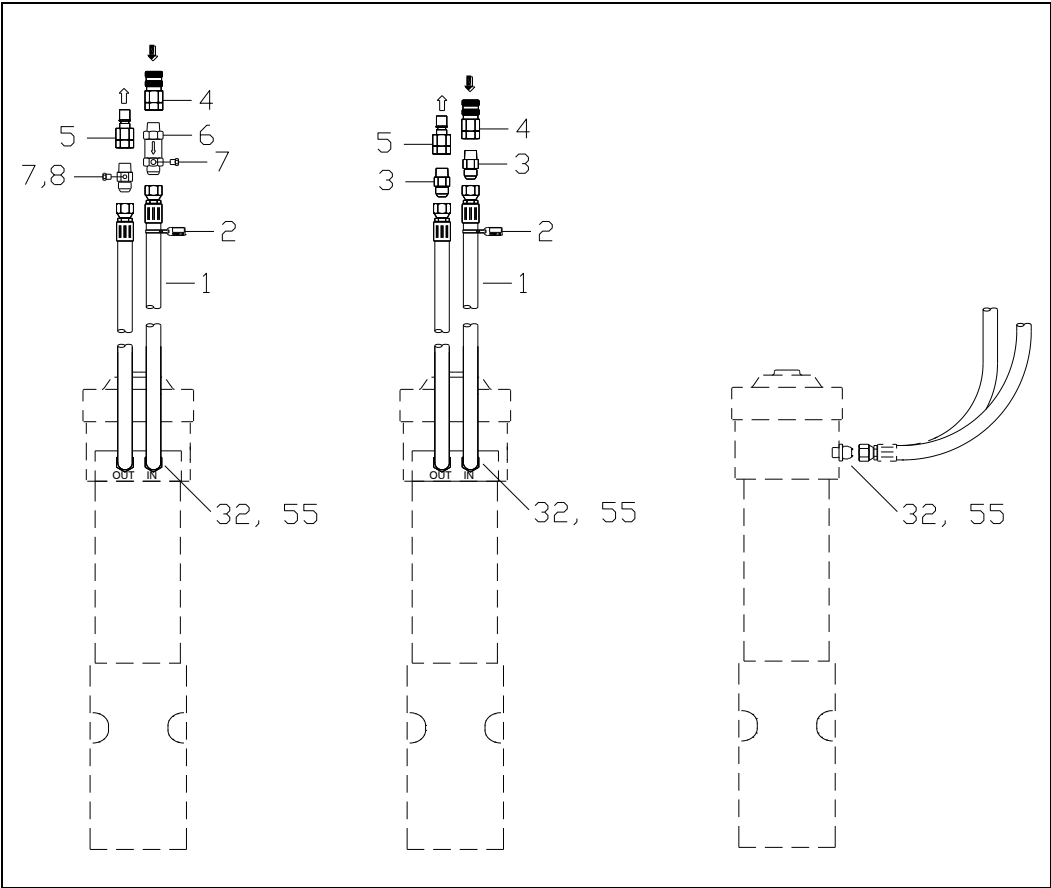


Fig. 4-10 Hydraulic Connections

Table 4.7 Hydraulic Connections

Item	Part No.	Description	Qty	Remarks / Specifications
1	657642	Hose	2	
2	818676	Pressure ID Tag	1	Attach Tag to Pressure Line
3	798120	Adapter	2	
4	670007	QD Socket	1	
5	670008	QD Plug	1	
6	670270	Check Valve	1	Discontinued on later units
7	667566	Hex Plug	2	Discontinued on later units
8	708726	Adapter w/ measuring port.	1	Discontinued on later units
32	676177	Adapter	2	BSP
55	676245	O-ring	2	Not required with bonded seal

5.0 Tool Selection – Standard & Specialty

5.1 Standard Tools

The three most commonly used tool points for concrete and rock demolition are the Chisel, Conical and Blunt.

A. Chisel – Suitable applications include soft rock and general demolition of concrete. The tool penetrates into the material, forcing it to separate. Useful when cutting action is required, e.g. benching and trenching. Available in Cross-Cut and In-Line wedge.

B. Conical Point - Same applications as the chisel. The conical tool also penetrates, but unlike the chisel, the rounded shape resists twisting that can cause burring in the tool's retainer pin area.

C. Blunt Tool – Designed for impact breaking. The blunt tool is effective in secondary breaking of oversize rock or boulder reduction.

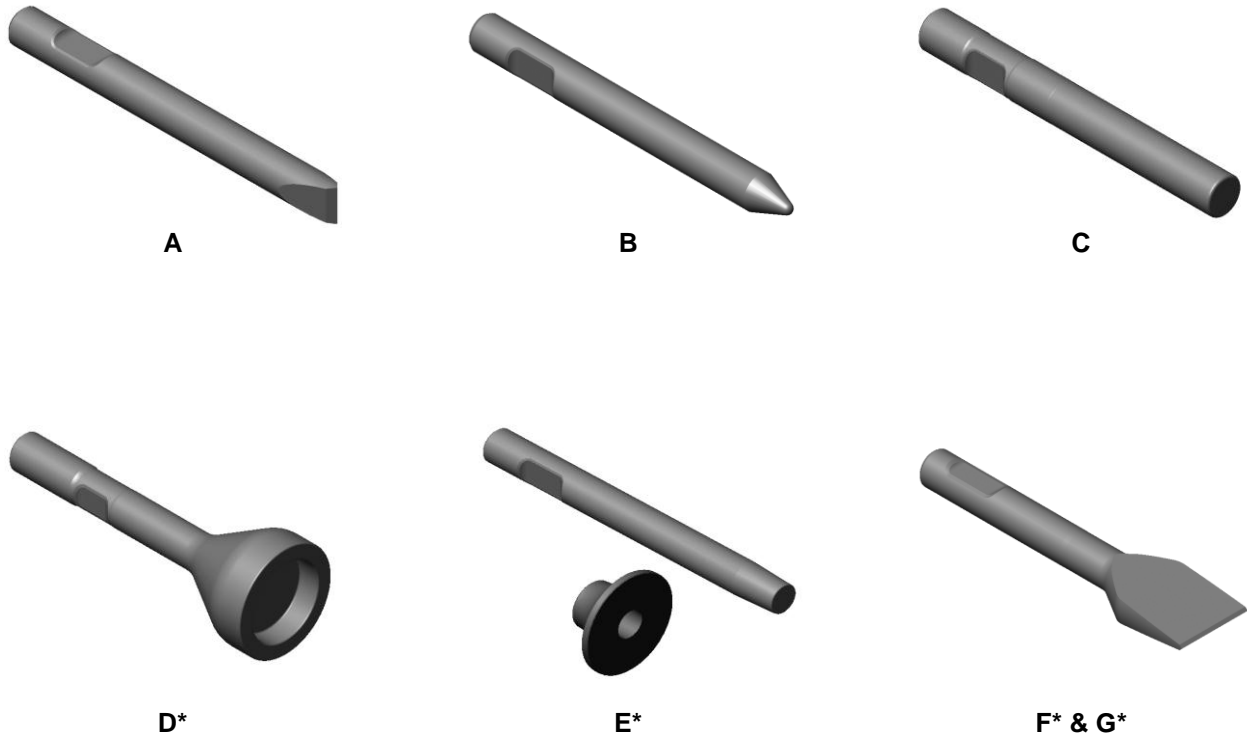


Fig. 5-1 Standard & Specialty Tools

***Shown are general illustrations. Actual tool design may vary**

5.2 Specialty Tools*

Specialty tools have a specific purpose or function designed into each tool. These tools can extend the versatility of a hammer, thus increasing productivity and eliminating the need for additional equipment.

*Not available for all models.

D. Post Driver – For driving posts, pipes, etc.

E. Tamper – Designed to compact loose material.

F. Frost Cutter – For cutting into frozen ground.

G. Asphalt Cutter – Designed to cut seams in asphalt for removal. Useful when removing asphalt to dig a trench. Available in Cross-Cut and In-Line configurations.

5.0 Tool Selection – Standard & Specialty

Table 5.1 Tool Selection – Standard & Specialty

Item	Description	Part No.	TD ³⁾ in. x WL ⁴⁾ in. (mm)	Weight lbs. (kg.)
A¹⁾	Chisel Cross Cut	658519	2.95 (75) x 19 (483)	50 (23)
--- ²⁾	Chisel In-Line (Not Pictured)	100490	2.95 (75) x 19 (483)	50 (23)
B	Conical Point	658520	2.95 (75) x 19 (483)	50 (23)
C	Blunt End	100586	2.95 (75) x 19 (483)	52 (24)
--- ²⁾	Bell End (Not Pictured)	100985	2.95 (75) x 13 (330)	50 (23)
D	Post Driver	101019	2.95 (75) x 19 (483)	50 (23)
E	Soil Tamper	100972	2.95 (75) x 13 (330)	202 (92)
F	Frost Cutter	100986	2.95 (75) x 13 (330)	44 (20)
G	Asphalt Cutter	100966	2.95 (75) x 22 (560)	104 (47)
--- ²⁾	Relieved Moil (Not Pictured)	100491	2.95 (75) x 19 (483)	50 (23)

¹⁾ **Standard tool supplied with breaker shown in Bold.**

²⁾ For availability of tool types not listed, contact Allied

³⁾ TD - Tool Diameter

⁴⁾ WL - Working Length

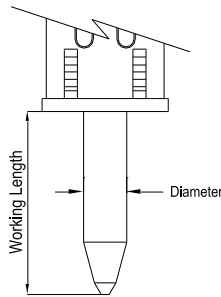


Fig. 5-2 Tool Diameter & Working Length

5.3 Tool Lubricant - Chisel Paste

A key element in improving the wear resistance of the bushing and tool is through the regular use of a high-quality lubricant. Allied Chisel Paste performs exceptionally well in this application because it's a "specialty" lubricant, formulated for use in heavy loaded reciprocating motion and high heat applications. Allied Chisel Paste is a unique blend of liquid and solid lubricants.

Solid lubricants, which include particles of molybdenum, copper and graphite, form a highly effective structure that resists being squeezed out during periods of heavy loading.

"General Purpose" grease typically contains little or no solid lubricants. That means once the liquid lubricant is squeezed out, there is a loss of lubrication between the bushing and tool. The result is metal-to-

metal contact, which quickly leads to friction related wear and damage.

Allied Chisel Paste Packaging & Ordering Information

Table 6-1 Allied Chisel Paste

Packaging		Part No.
14.5 oz Tubes*	Qty x 10	574430
14.5 oz Tubes*	Qty x 30	574431
35 lb Bucket	Qty x 1	676698
120 lb Drum	Qty x 1	679968

*Fits standard hand operated grease guns.

6.0 Service Kits

6.1 Tune-up Kit

Tune-up kits restore performance and maintain the reliability of the breaker by replacing common wear items.

The Tune-up kit includes a full set of seals, accumulator membrane, lower tool bushing and tool retaining pin.

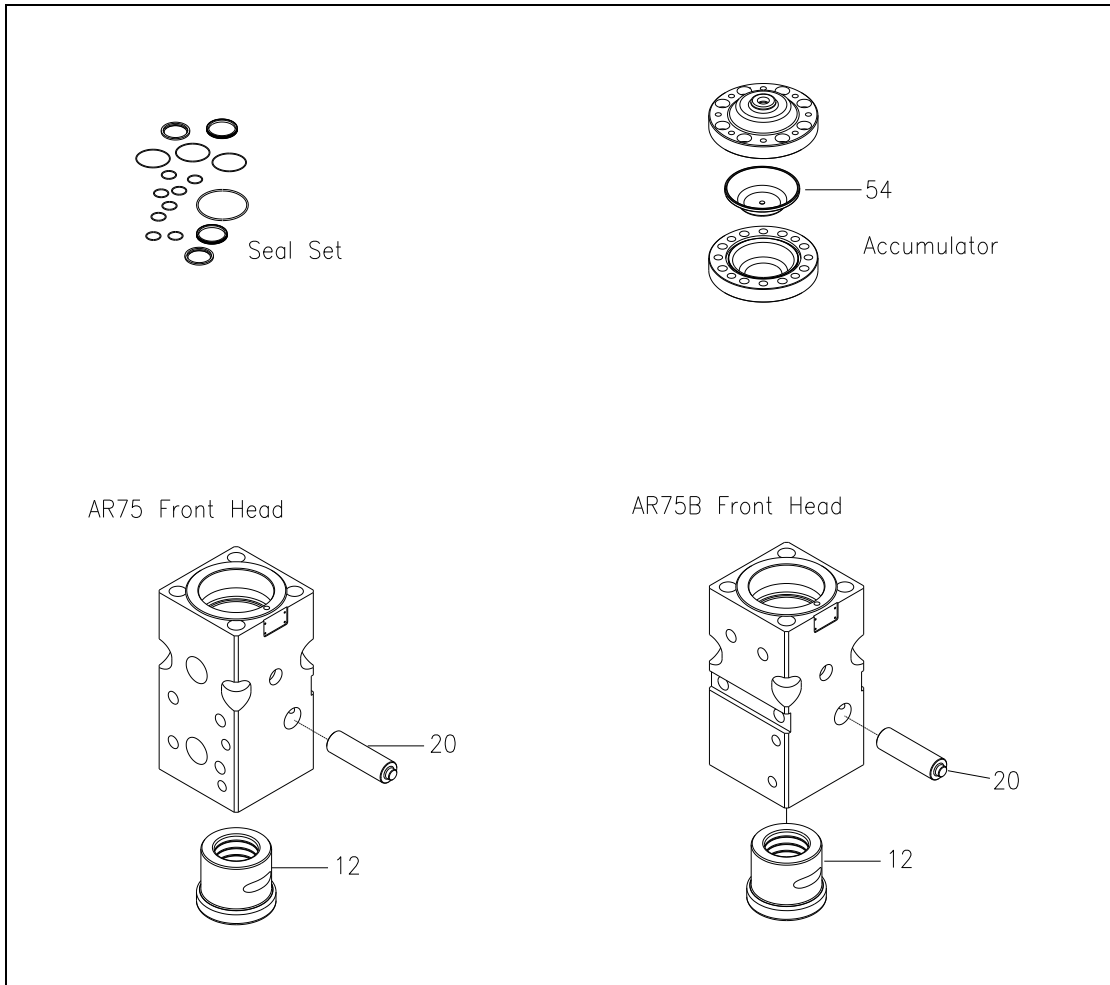


Fig. 6-1 Tune-up Kit

Table 6.1 Tune-Up Kit

Item	Part No.	Description	Qty	Remarks / Specifications
---	101353	Tune-up Kit	1-Kit	Kit includes seal set & items 12,20,54
---	676244	Seal Set	1	
12	676240	Lower Tool Bushing	1	
20	676238	Tool Pin	1	
54	676217	Accumulator Membrane	1	

6.0 Service Kits – [cont'd]

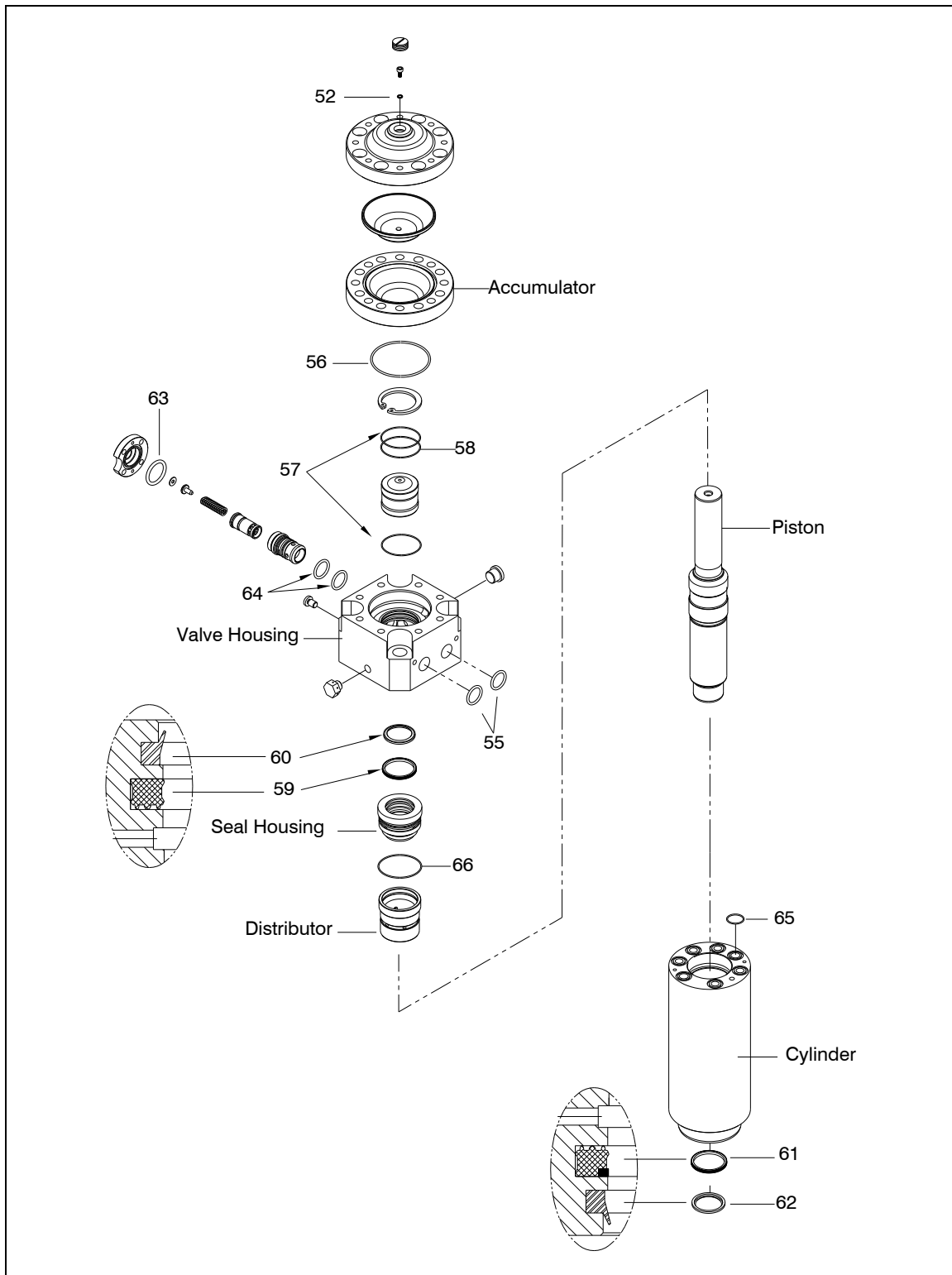




Fig. 6-2 Seal Positions – AR75 & AR75B

6.0 Service Kits – [cont'd]**Table 6.2 Seal Set AR75 & AR75B**

Item	Part No.	Description	Qty	Remarks / Specifications
---	676244	Seal Set	1-Set	Set Includes all items listed in Table 6.2
52	676201	U-sit Ring	1	
55	676245	O-Ring	2	
56	676247	O-Ring	1	
57	676248	O-Ring	2	
58	676250	Back-up Ring	1	
59	676252	Seal	1	
60	676253	Wiper	1	
61	676255	Seal	1	
62	676256	Wiper	1	
63	676251	O-Ring	1	
64	676206	O-Ring	2	
65	B0607150	O-Ring	7	
66	676257	O-Ring	1	
---	676927	Thread Lube 2 oz.	1	
				Follow application instructions
  Refer to the instructions given in Repair Manual 101230 for proper assembly of parts.				

IMPORTANT

Seal set includes packet of thread lubricant for use on side rod threads. DO NOT apply to seals!

6.0 Service Kits – [cont'd]

6.1 General Description

The accumulator is a self-contained pressure vessel with a flexible membrane dividing the inner chamber. The lower chamber is used to receive, store and discharge pressurized oil. Pressurized gas occupies the upper chamber.

Filling with nitrogen (N₂) gas is accomplished with the charging unit (Fig. 6-3) and a commercially available nitrogen bottle. Table 6.3 lists items included in the charge kit.

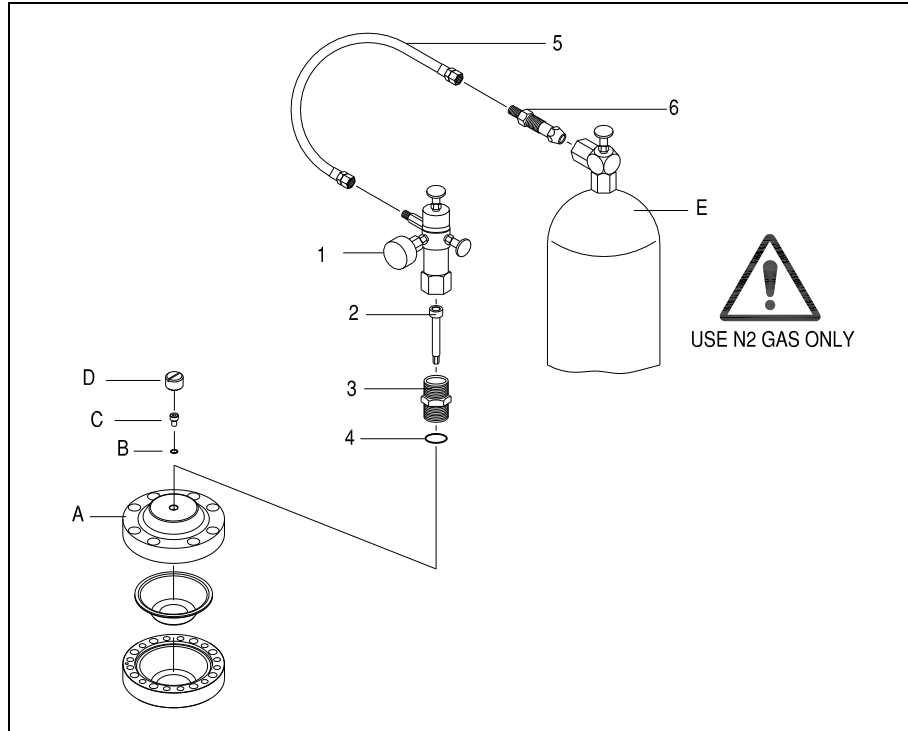


Fig. 6-3 N₂ Gas Charge Kit

Table 6.3 N₂ Gas Charge Kit

Item	Part No.	Description	Qty	Remarks / Specifications
---	570071	N ₂ Gas Charge Kit	1-Kit	Kit includes 1,2,3,4,5,6
1	100527	Charge Valve with Gauge	1	Includes 2-6 (& storage case - not shown)
2	40601	Socket Bolt	1	
3	R101635	Adaptor	1	
4	901135	O-ring	1	
5	N/A	Hose	1	8 Ft. [2.5 M] Not Sold Separately
6	N/A	Gas Bottle Adapter	1	Not Sold Separately
E	N/A	Nitrogen Gas Bottle	---	Not Supplied (Source Locally)
A,B,C, D,E	---	Accumulator, U-sit ring, Bolt, Cap, N ₂ Gas Bottle	---	Items A,B,C,D,E not included in charge kit. They are shown for reference only.



Read, understand and follow all instructions given in Repair Manual 101230 for the safe and proper use of this tool.

7.0 Mounting Information

7.1 AR75B With BR Housing Plates

Figure 7-1 shows the AR75B equipped with the BR housing plate option. The BR housing plate is intended for backhoe and excavator machines.

A mounting bracket (sold separately) is bolted to the top of the housing plates. Allied offers an array of mounting brackets to fit virtually any carrier, including those equipped with quick mounting couplers.

The mounting bracket is bolted to the connection plate located at the upper end of the housing plates.

The plate thickness and other dimensions, including the spacing, quantity and diameter of the bolt holes, will vary between small, medium and large size breakers.

In Table 7.1, “Family” identifies the connection plate used on each of the AR-Series models.

Other Allied work tools, including the Ho-Pac® (vibratory plate compactor) will use these same mounting families.

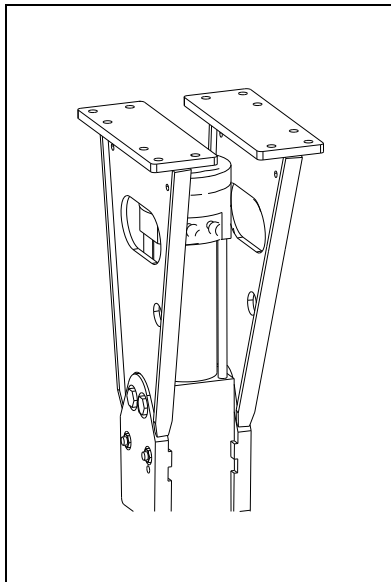


Fig 7-1 BR Housing Plates

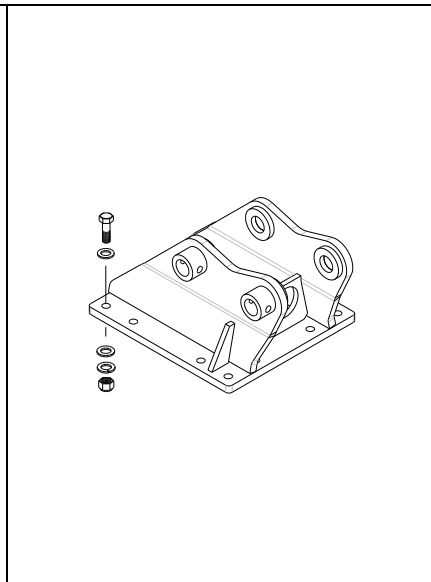


Fig. 7-2 Mounting Bracket & Hardware - Typical

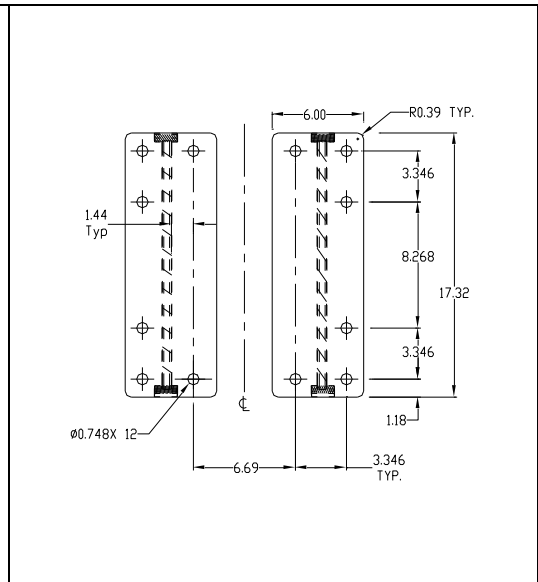


Fig. 7-3 Connection Plate on “BR” Housing Plates

Table 7.1 Mounting Family & Hardware For AR-Series Breakers

Model	Family	Bolt	FL Washer	LK Washer	Nut
AR70C, A75B	BR	90566 (12)	--- (0)	90597 (24)	91000 (12)
AR85B, AR95B	SR	572352 (10)	679422 (20)	571027 (10)	572353 (10)
AR110B, AR110C, AR120B	MR	101765 (14)	901291 (28)	658529 (14)	90507 (14)
AR130B, AR140B	LR8	101765 (14)	901291 (28)	658529 (14)	90507 (14)
AR160C, AR165, AR170C, AR175	LR9	573167 (14)	573029 (28)	573028 (14)	90519 (14)
AR180C	LR10	573030 (14)	573029 (28)	573028 (14)	90519 (14)

See Operation & Maintenance Manual for Fastener Tightening Torque

8.0 How To Order Spare Parts

Your local Allied dealer requires the Product Name, Model and Serial Number to better assist you with questions regarding parts, warranty, operation, maintenance, or repair. This information should be noted in Section 2.3 of this manual.

Product _____

Model _____

Serial No. _____

Please fill out completely

Line	Part Number	Description	Quantity	Price
1				
2				
3				
4				
5				
6				
7				
8				
9				
10				

Your contact information

Your Name _____ Company Name _____

Phone _____ Account Number _____

Fax _____ Purchase order _____

Email _____ Shipping carrier _____

*See note below

Billing Address _____ Shipping Address _____

*Note: All backordered parts will be shipped when available via the same method as the original order unless initialed and checked below:

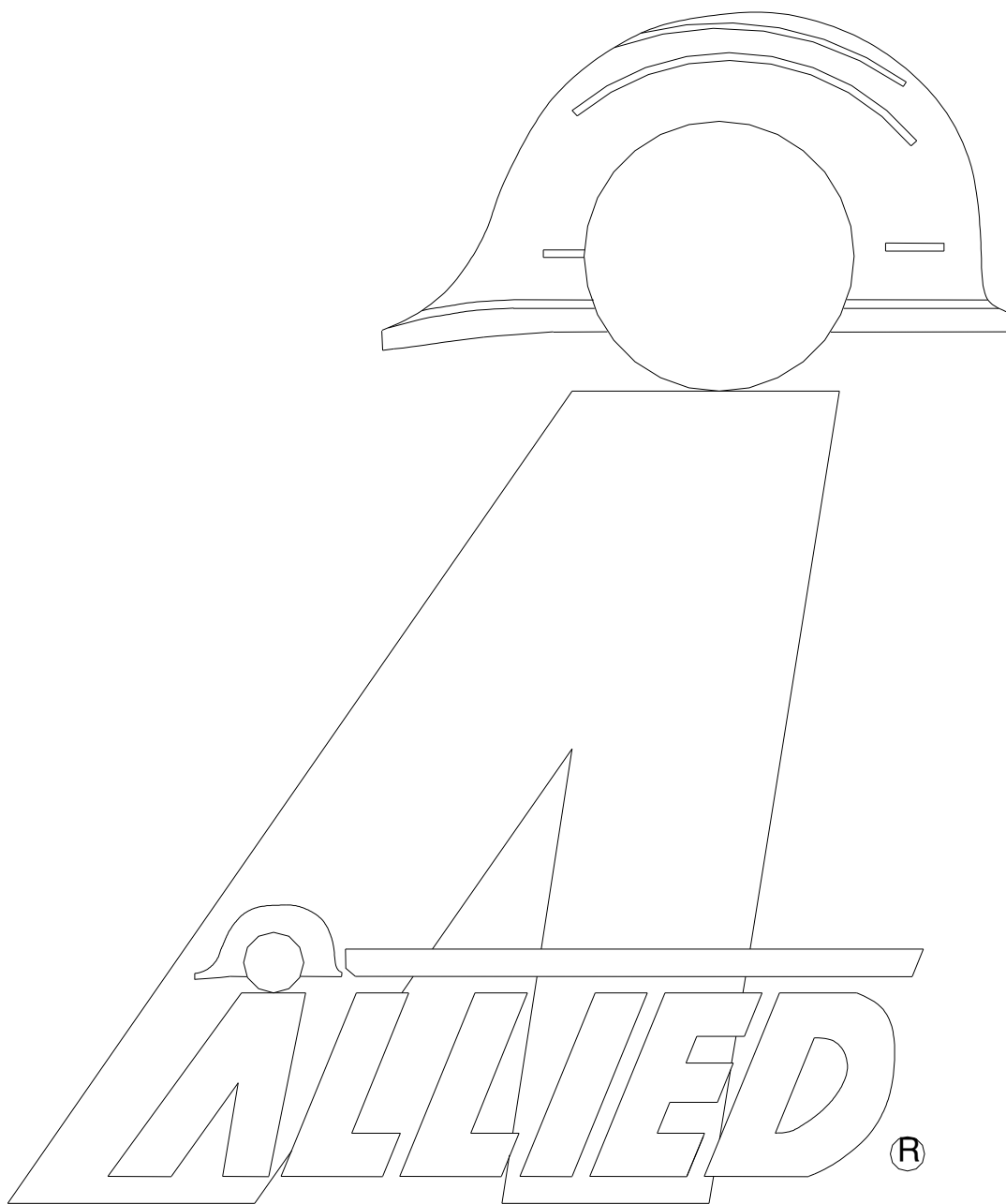
Initials

- _____

- ☐ Ship complete order only
☐ Ship available parts and contact customer on disposition of backordered parts
☐ Other – specify below

NOTES

This image shows a single page of white paper with horizontal blue ruling lines. The lines are evenly spaced and run across the width of the page. There are no margins, text, or other markings on the paper.



3900 Kelley Avenue, Cleveland, Ohio 44114
Tel: 216-431-2600 Fax: 216-431-2601
e-mail: Sales@AlliedCP.com
website: <http://www.AlliedCP.com>