

AR Series

Hydraulic Impact Breaker



Parts Manual – AR165

Keep this manual in a convenient location so that it is easily accessible for future reference. Contact your Allied Dealer or the Allied Customer Service Department for replacement manuals. Inquiries regarding the content of this manual must include effective date shown on inside cover.



PM575289

Contact Information and Revision History

3900 Kelley Ave

Cleveland, Ohio 44114

E-mail: sales@alliedcp.com

Tel: 216-431-2600

Fax: 216-431-2601

Revision History for Document No. PM575289



Continuous improvement of our products is an Allied policy. The material in this publication, including figures, captions, descriptions, remarks and specifications, describe the product at the time of its printing, and may not reflect the product in the future. When changes become necessary, these will be noted in the table below. Specifications are based on published information at the time of publication. Allied Construction Products, LLC, reserves the right to change, edit, delete or modify the content of this document, including descriptions, illustrations and specifications without prior notification. For product or document updates go to www.alliedcp.com.

Table of Revision History for Document No. PM575289

<u>Effective Date</u>	<u>Page</u>	<u>Summary of Change</u>
15_Aug		Table 4.2 Item 4 add part number B3206040
13_May	10	Part number correction to item 17 & 18.
13_Feb	7,8,10	Revise Fig 4-1 add newer wear plates, Item 208 qty was 2 (early design discontinued) Item 29 part number change
13, Jan	3,4,5,7,13,19	Revise Table 3.1, item 14, Table 4.1, items 219,220,222, Table 4.2 items 101, 102, Table 6.2 item 101,102
12_Aug	7,21	Revise Table 4.1, item 211,212,213,216, Table 7.1
11_Apr		Corrections to seal kit. Remove item 73. Items 87 & 100 incorrect description – was O-ring, change to backup-ring.
11_Feb	---	Original Issue of Parts Manual 575289

Table of Contents

<u>Section</u>	<u>Page</u>
Contact Information	i
Document Revisions	i
Table of Contents	ii
1.0 Introduction & Scope	1
1.1 Purpose of This Manual.....	1
1.2 About This Manual.....	
1.3 How to Order Replacement Manuals.....	1
1.4 Related Publications.....	1
2.0 Equipment Identification	3
2.1 Serial Number Location.....	3
2.2 Equipment Identification Tag.....	3
2.3 Owner's Record of the Equipment.....	3
3.0 Safety & Information Labels	4
4.0 Identification of Spare Parts	7
4.1 Housing Box and Components.....	7
4.2 Breaker Assembly.....	9
4.3 Hydraulic Connections.....	15
5.0 Tool Selection Guide	16
5.1 Standard Tools.....	16
5.2 Specialty Tools.....	16
5.3 Chisel Paste.....	17
6.0 Service Kits and Tools	18
6.1 Tune-Up Kit.....	18
6.2 Seal Set.....	19
6.3 Accumulator N2 Gas Charge Tool Kit...	21
7.0 Mounting to the Carrier	22
7.1 Mounting Brackets.....	22
8.0 How To Order Spare Parts	23

<u>List of Figures</u>	<u>Page</u>
2-1 Equipment ID Tag Location.....	3
2-2 Equipment Identification Tag.....	3
3-1 thru 3-14 Safety & Information Labels.....	4
3-15 Location of Labels on Equipment.....	6
4-1 Housing Box & Components.....	7
4-2 Breaker Assembly.....	9
4-3 Hose Routing To Excavator – Typical....	15
4-4 Hydraulic Connections.....	15
5-1 Standard & Specialty Tools.....	16
5-2 Tool Diameter & Working Length.....	17
6-1 Tune-up Kit.....	18
6-2 Seal Set.....	19
6-3 Accumulator N2 Gas Charge Tool Kit....	21
7-1 Mounting Bracket - Typical	22
7-2 Mounting Connection Plate Family.....	22

<u>List of Tables</u>	<u>Page</u>
1.1 About This Manual.....	1
3.1 Safety & Information Label – Description.....	4
3.2 Safety & Information Labels - Ordering.....	6
4.1 Housing Box and Components.....	8
4.2 Breaker Assembly.....	10
4.3 Hydraulic Connections.....	15
5.1 Tools – Standard Type.....	17
4.5.2 Tool Lubrication - Chisel Paste.....	17
6.1 Tune-Up Kit.....	18
6.2 Seal Kit.....	20
6.3 Gas N2 Charge Tool Kit.....	21
7.1 Mounting Bracket & Hardware.....	23

1.0 Introduction and Scope

1.1 About This Manual

Table 1.1 About This Manual



Document ID. No.	PM575829
Type	Spare Parts
Current Status	See Inside Cover
Product Name:	Hydraulic Impact Breaker
Series	AR
Applicable Model[s]:	AR165
Years of Manufacture:	2011 & above
*Inquiries regarding this manual must include effective date shown on inside cover	

The material presented in this manual has been prepared in support of the product named in Table 1.1. It's intended solely for use with expressed model(s) and may be unsuitable with models unnamed.

The publication identified in Table 1.1 was created solely for information purposes and should not be considered all-inclusive. If further information is required, contact your local Allied dealer or the Allied Customer Service Department.

Parts Manuals do not include safety precautions or operating procedures. Figures depict views that are intended for parts identification and not for purposes of repair or service of the product. Material presented in this manual, including tables, figures, descriptions and captions, may show equipment that is optional.

How to use this Manual:

The Allied work tool consists of separate components and partial assemblies. Components are identified with the aid of figures, captions, item key, part name and quantity. If needed, 'remarks' and 'specifications' will further clarify the part's description or denote assignment with select unit(s) by serial number.

An order form is provided at the back of this manual. Prior to ordering parts, confirm that the information recorded on the equipment's identification label corresponds with Table 1.1. For the location of this label, refer to Section 2.0 of this manual.

The content of this document has been reviewed for accuracy. Allied Construction Products, LLC has

endeavored to deliver the highest degree of accuracy and every effort has made to provide information as complete as possible. However, continuous improvement of our products is an Allied policy. The material in this publication, including figures, captions, descriptions, remarks and specifications, describe the product at the time of its printing, and may not reflect the product in the future. A table of revision history for this document is found on the inside cover.

1.2 How To Order Replacement Publications

This manual is an integral part of this product. Keep it in a convenient location so that it is easily accessible for future reference.

Replacement manuals can be ordered by contacting your Allied dealer service center. These manuals may also be viewed and downloaded at: www.alliedcp.com

1.3 Related Publications

Allied Construction Products, LLC offers the following publications for the product identified in Table 1.1.

1.3.1 Safety, Operation & Maintenance Manual

SOM575290 for AR-Series AR165 – AR205

The Safety, Operation and Maintenance Manual has been prepared to assist the operator and maintenance personnel with the information necessary for the safe and proper use of the Allied work tool.

Content includes:

- Safety Information
- Equipment Serial Number and Model Identification
- Technical Data (Weight & dimensions)
- Basic Guidelines for Installation and Set-up
- Pre-Operation Inspection
- How to Operate the Allied Work Tool
- Maintenance Schedule
- N2 Gas Charging Instructions
- Tool and Guide Bushing – Lubrication, Inspection, Wear Limits and Replacement
- Troubleshooting
- Removal From Carrier, Transporting, Lifting & Storage

1.0 Introduction and Scope – [cont'd]

1.3.2 Related Publications – cont'd

AEM Safety Manual for Hydraulic Breakers

The Association of Equipment Manufacturers offers a safety manual designed for operators and maintenance personnel of hydraulic mounted breakers. The manual is available in Spanish, French and English. It is published in an illustrated format of sensible do's and don'ts, featuring typical daily situations on the job site. Content includes safety tips concerning the workplace and equipment, start up and shut down guidelines and special operating and maintenance precautions.

This publication is available by contacting:

Association of Equipment Manufacturers
Toll free 1-866-AEM-0442
E-mail: aem@aem.org
Website: www.aem.org

Ask for FORM CMHB-1004, Hydraulic Mounted Breakers.

This publication is also available through Allied under part number 953076 (English). To order a copy, contact the Allied Customer Service Department.

2.0 Equipment Identification

2.1 Model and Serial Number Location

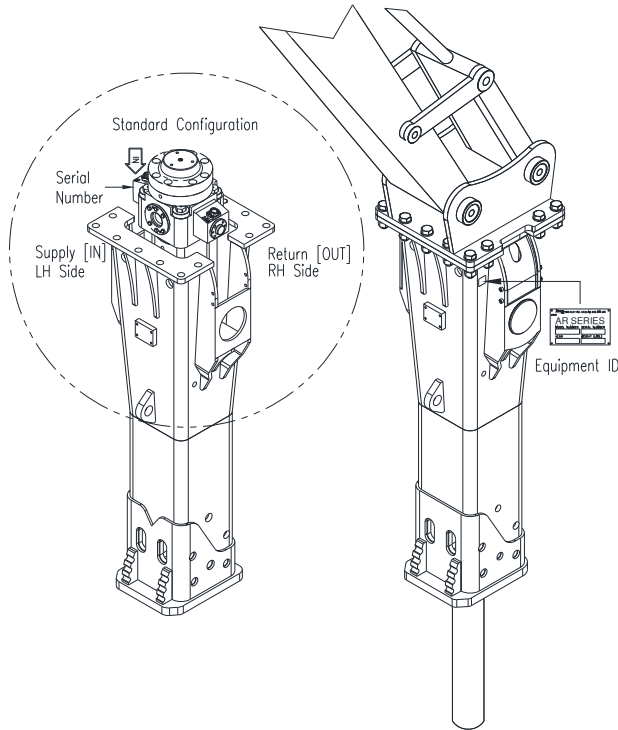


Fig. 2-1 Equipment Identification

The Serial Number assigned to this equipment can be found in the following locations:

1. Located on the Equipment Identification Tag
2. Stamped on the Valve Housing

2.2 Equipment Identification Tag

The Equipment Identification Tag is affixed to the side of the housing.

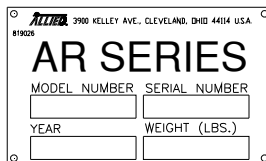


Fig 2-1 Equipment Identification Tag

The ID Tag provides the following information:

- Company Logo
- Street Address, City, State - USA
- Product name
- Model number
- Serial number
- Year of manufacture
- Weight

Confirm that the information contained on the Tag corresponds with the information provided in Section 1, Table 1.1.

2.3 Owner's Record of the Equipment

Your local Allied dealer requires complete information about the equipment to better assist you with questions regarding parts, warranty, operation, maintenance, or repair.

- Copy the Model and Serial Number from the Equipment Identification Tag to the space provided below.
- Indicate the date in which the Allied equipment was placed into service.
- Fill out the Warranty Registration form and return to Allied Construction Products, LLC.

Product Hydraulic Breaker

Series AR

Model AR165

Part Number: 575138

Serial Number: _____

In Service Date: _____



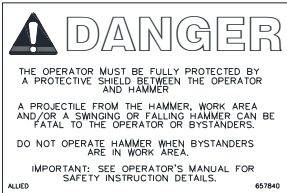
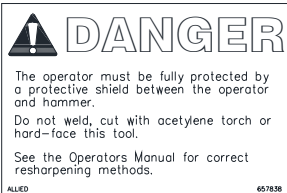



Registration Date _____

3.0 Safety, Information & Identification Labels

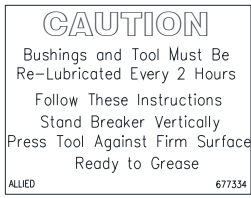

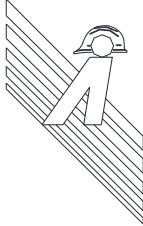

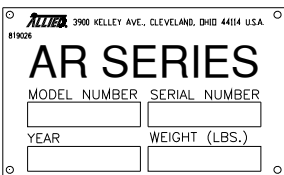
3.1 Label Description and Location On Equipment

Labels affixed to the Allied equipment communicate important information. Safety labels alert personnel to potential hazards. Other labels provide product identification and instructions important to operation and service.

Keep labels clean so that words and illustrations are legible. Replace damaged or missing labels before operating this equipment. Refer to Table 3.1 for ordering information. Refer to Figure 3-15 for the position of the label on the equipment.

Label	Figure	Description
L1		Read The Manual - Safety Alert Symbol with pictogram of open book. Gives notice of the importance of reading the manual(s) for information and/or instructions.
L2		Keep Clear - Pictogram displays arrow distancing worker safely from recognized hazard which is represented by the box. Breakers, or any other work tool, pose risk of injury to workers if they are not kept at a safe distance. Never operate the work tool with workers inside the work zone.
L3		Flying Debris Hazard – Alerts personnel to the hazard of fragments becoming projectiles. A protective guard to shield the operator must be installed before operation of the breaker. Personnel are directed to the Operator’s Manual for safety instructions. NOTE: A smaller sized version of this decal is to be displayed in a conspicuous location inside the operator’s cab.
L4		Personal Protection Equipment / Tool Re-sharping – Alerts personnel to provide protective shielding between the operator and breaker. It also warns against welding, cutting, or hard-facing the tool. Personnel are directed to the Operator’s Manual for approved re-sharping methods.
L5		Pressurized Nitrogen Accumulator – Alerts personnel to the accumulator, warning of nitrogen gas under pressure. Directs personnel to the Operation and Maintenance Manual for service instructions.
L6		Lift Point – Pictogram of hook identifies approved lift points.
L7		OIL SUPPLY LINE “PRESSURE” I.D. TAG – A red colored cable tie marked “PRESSURE LINE” is attached to the supply hose for ease of identification between hoses.

3.0 Safety, Information & Identification Labels

<u>Label</u>	<u>Figure</u>	<u>Description</u>
L8		LUBRICATION –Re-lubrication frequency with instructions. Risk of equipment damage through unapproved methods. Strict attention to all procedures must be followed. Stand breaker upright with contact pressure applied at tool. Ready to grease.
L9		Lubrication Point – Pictogram of instruction manual and grease gun is used to identify lubrication points. Read the manual(s) for application instructions, grease type and re-lubrication schedule.
L10		Allied “A” with Hard Hat and Background Stripes
L11		COMPANY LOGO – This decal is the Allied brand identifier and is a registered trademark of Allied Construction Products, LLC.
L12	<p>AR165</p>	MODEL – Decal identifies the series and specific model.
L13		ID TAG - Contains identifying information about the equipment, including: Manufacturer’s name, address, product name, model number, serial number, year of manufacture, and weight.

3.0 Safety, Information & Identification Labels

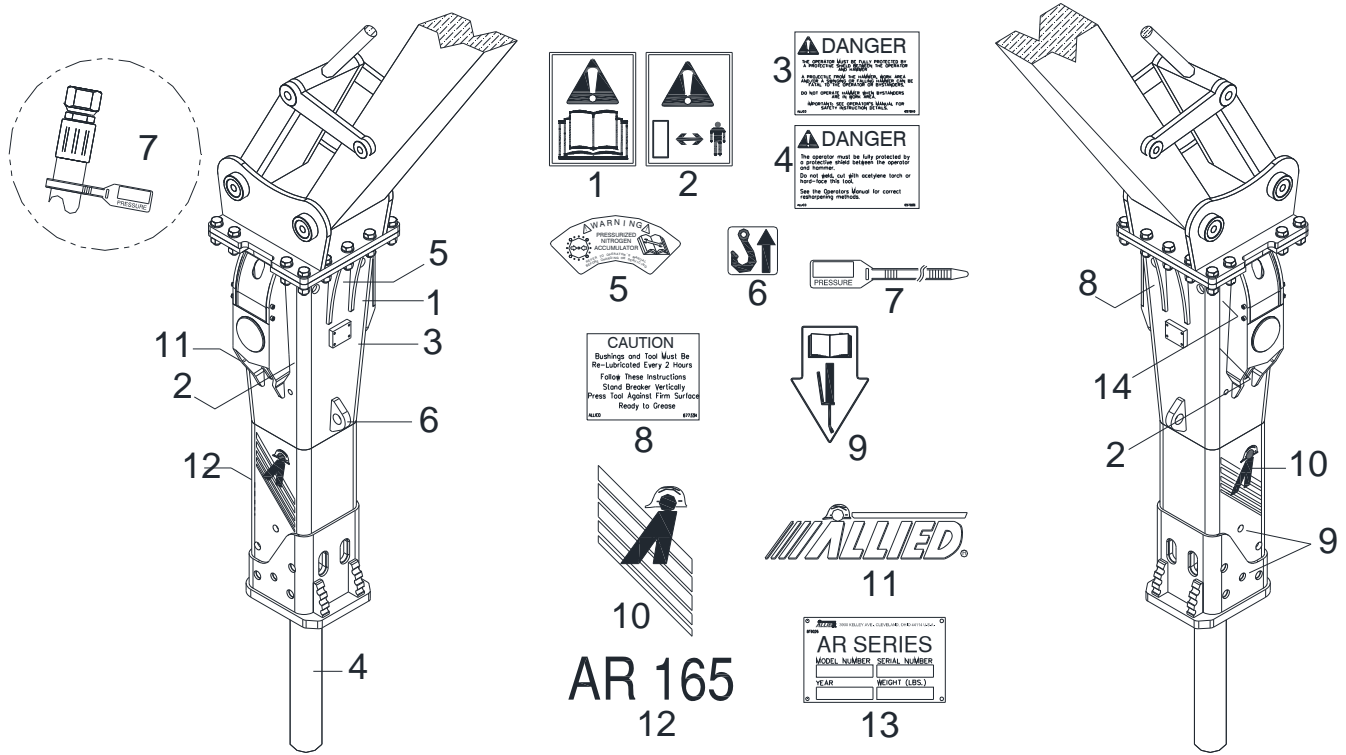


Fig. 3-15 Label Position on Equipment

Table 3.1 Decal Set

Item	Part No.	Description	Qty	Remarks / Specifications
---	575139	Decal Set	1 (Set)	Set includes 1-11, 13,14
1	676984	Decal – Read Instructions	1	
2	657841	Decal – Stay Clear	2	
3.1	657839	Decal – Danger (Small)	1	Place in conspicuous location inside cab
3.2	657840	Decal – Danger (Large)	1	
4	657838	Decal – Tool Sharpening	1	
5	102756	Decal – Warning Pressurized Accumulator	1	
6	676982	Decal – Lift Point	1	
7	818676	Pressure ID Tag	1	Attached to hose - pressure line
8	677334	Decal – Lube w/ Tool In	1	
9	A101725	Lubrication Points	2	
10	576282	Decal – Allied “A” with Hard Hat / Stripes	2	
11	676656	Decal – Allied	1	
12	575148	Decal – Model AR165	1	
13	819026	Equipment ID Plate	1	Item 13 not included in Set

4.0 Parts Information

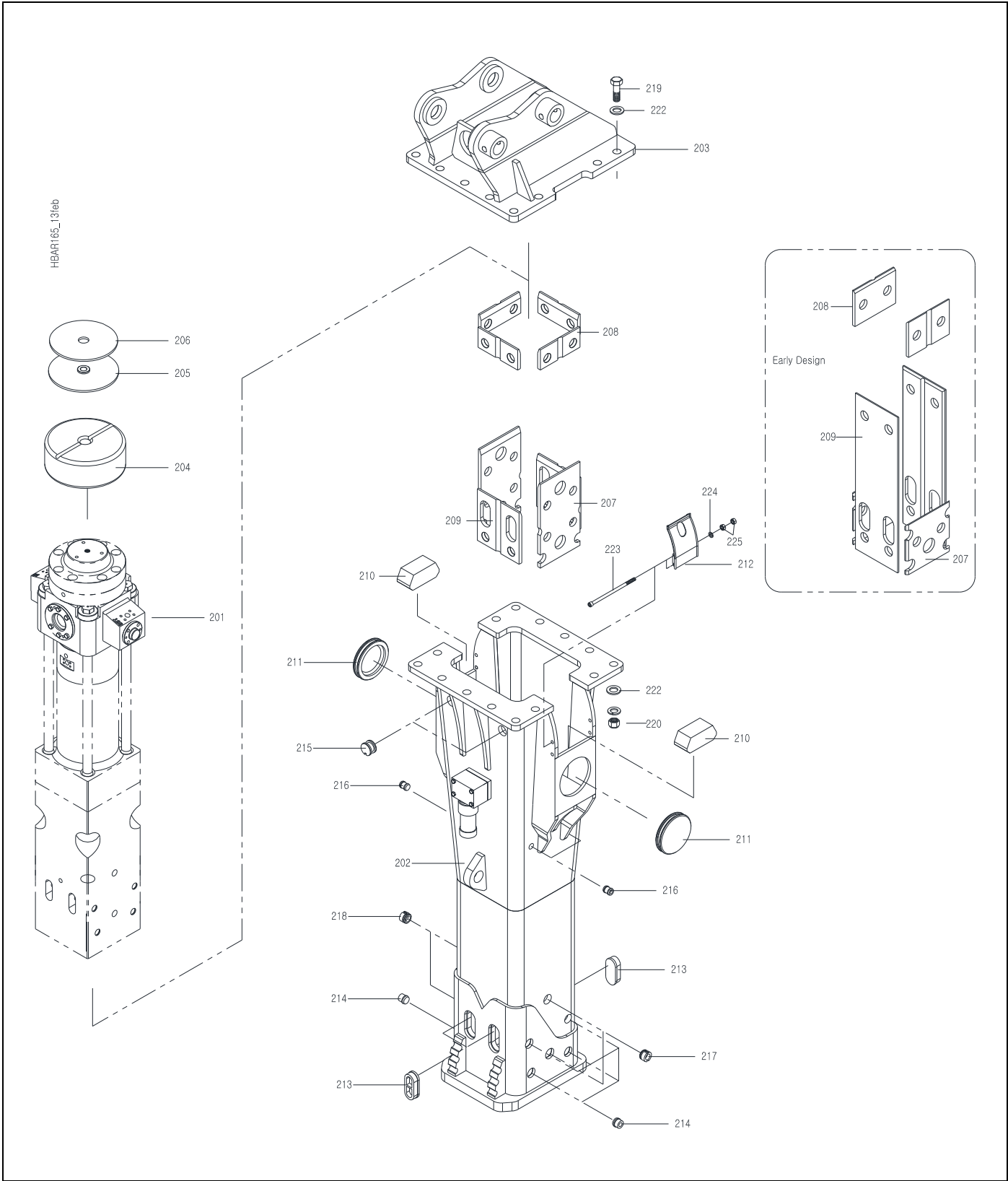


Fig. 4-1 Housing Box & Components Identified (Shown with Optional BreakerLube HML)

4.0 Parts Information – [cont'd]**Table 4.1 Housing Components (*Standard Configuration)**

<u>Item</u>	<u>Description</u>	<u>Part No.</u>	<u>Qty</u>	<u>Remarks / Specifications</u>
---	Breaker with Housing	575138	---	Item 203 not included. Order Mounting bracket separately.
201	Breaker Ass'y	---	1	Refer to Section 4.2
202	Housing	B3200070	1	
203	Mounting Bracket	Varies	---	Refer to Section 7
204	Top Buffer	B3200030	1	
205	Top Buffer Plate Ass'y	571510	1	
206	Top Wear Plate	571511	1	
207	Wear Plate	B3200020	2	
208	Wear Plate	B300A030	4 (2)	Now qty-4 Sides LH/RH & Front/Rear (qty-2 LH/RH Early design discontinued)
209	Wear Plate	B3200060	2	Early design (Long) discontinued
210	Side Buffer	571515	2	
211	Rubber Plug	B4000100	2	
212	Port Cover	B5000150	2	
213	Rubber Plug	B3000110	4	
214	Rubber Plug	571522	8	
215	Rubber Plug	B400W270	2	
216	Rubber Plug	570998	4	
217	Rubber Plug	B3200040	2	
218	Rubber Plug	B3200050	2	
219	Hex Bolt, Hex Nut, Washer	---	---	Mounting Hardware Items 219, 220,222 Refer to Table 7.1
223	Socket Head Bolt	575465	4	
224	FL Washer	575257	4	
225	Hex Nut	607264	8	

4.0 Parts Information – [cont'd]

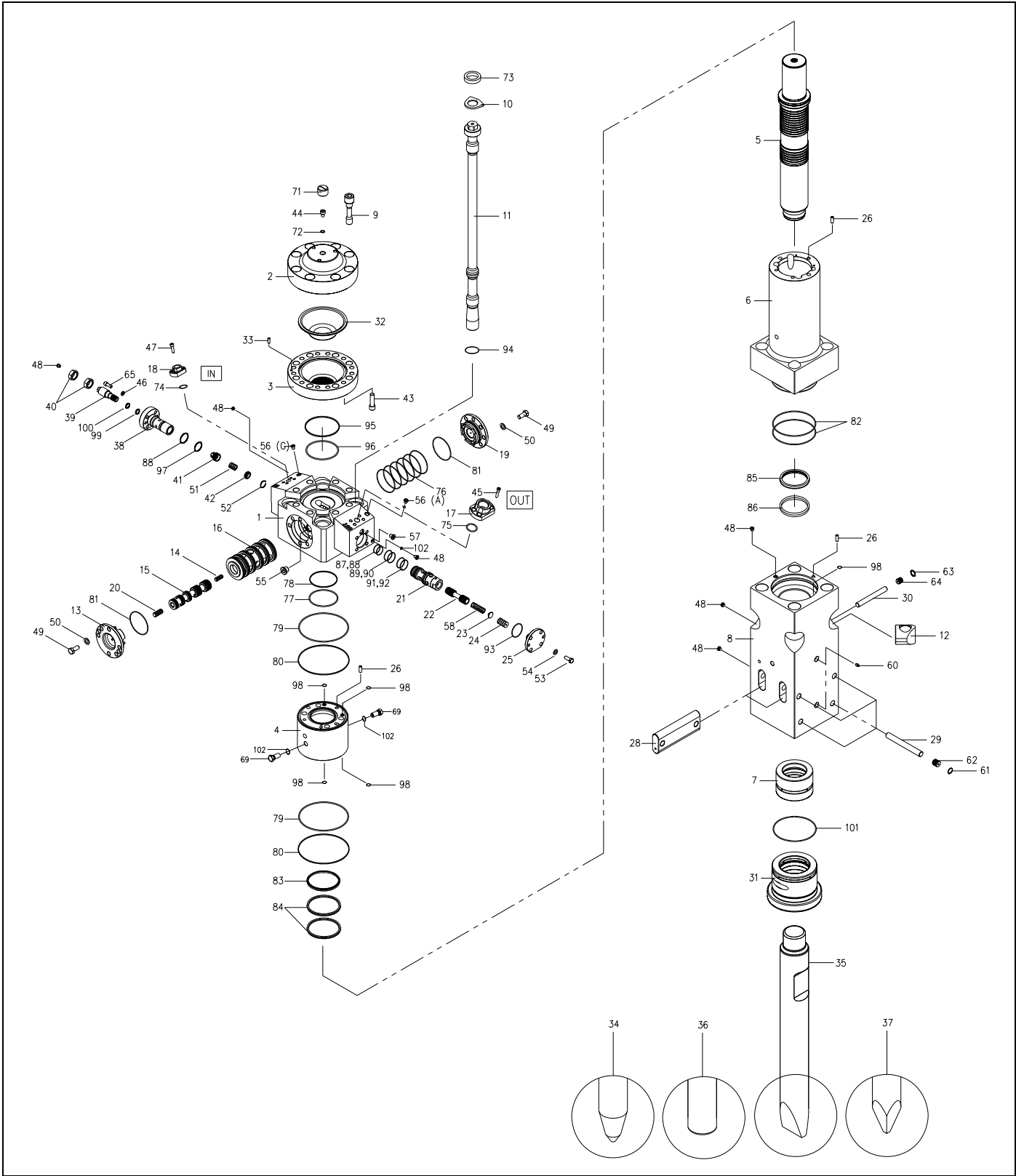


Fig. 4-2 Breaker Assembly

4.0 Parts Information – [cont'd]**Table 4.2 Breaker Assembly**

Item	Description	Part No.	Qty	Remarks / Specifications
1	Valve Housing	B3206900	1	
2	Accumulator Cover	B3206020	1	
3	Accumulator Bottom	571526	1	
4	Seal Housing	B3206040	1	
5	Piston	B3206050	1	
6	Cylinder	B3206950	1	
7	Upper Tool Bushing	B3206080	1	
8	Front Head	B3206090	1	
9	Bolt	B4006100	8	
10	Lock Washer	B3006110	4	
11	Side Rod	B3206130	4	
12	Side Rod Nut	B3206140	4	
13	Sleeve Cover	571529	1	
14	Spool	571531	1	
15	Main Spool	B3006170	1	
16	Sleeve	B3006750	1	
17	Flange	572704	1	Refer to Table 4.3
18	Flange	572705	1	Refer to Table 4.3
19	Sleeve Cover	571530	1	
20	Spool	571537	1	
21	Oper. Valve Guide	B3006770	1	
22	Oper. Valve Spool	B3006780	1	
23	Oper. V/V Spring Guide	B2506280	1	
24	Oper. V/v Shim Plate	101854	5	
25	Oper. Valve Cover	B3006790	1	
26	Guide Pin	B4006310	3	
27	---	---	---	Option not available
28	Tool Pin	B3206340-01	2	SN-1004 ~ Up
29	Pin	571684	4	Lower Bushing / Tool Retainer
30	Pin	B3206360	1	Upper Bushing
31	Lower Tool Bushing	B3206840-03	1	
32	Membrane	570979	1	Accumulator
33	Guide Pin	676183	1	Accumulator

4.0 Parts Information – [cont'd]

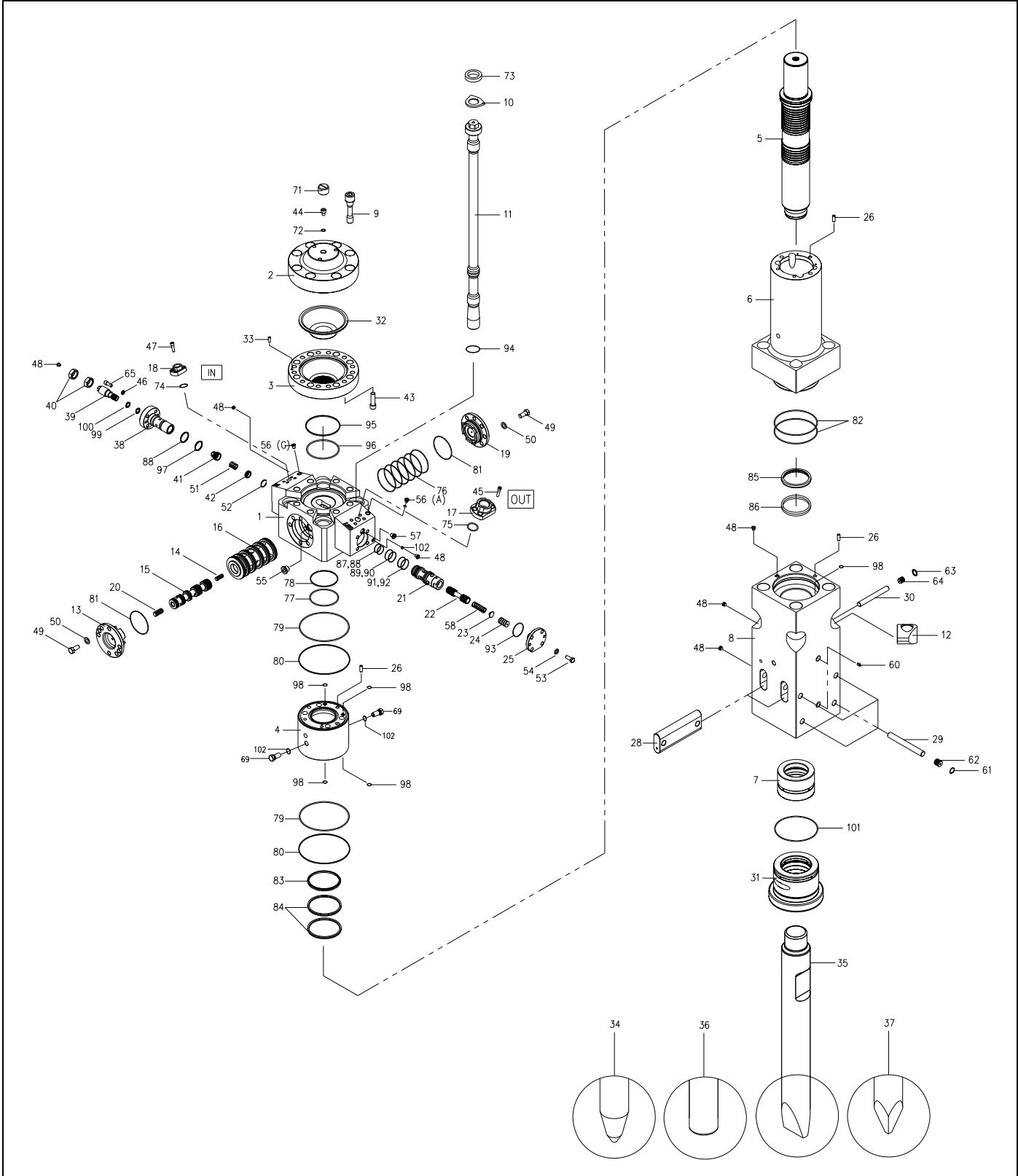


Fig. 4-2 Breaker Assembly

4.0 Parts Information – [cont'd]**Table 4.2 Breaker Assembly - (cont'd)**

<u>Item</u>	<u>Description</u>	<u>Part No.</u>	<u>Qty</u>	<u>Remarks / Specifications</u>
34	Tool Selection	Varies	---	34,35,36,37 Refer to Tool Selection Table 5.1
38	Needle Valve Housing	B6006910	1	
39	Needle Valve Spool	B6006920	1	
40	Hex Nut	B6006930	1	
41	Check Valve Spool	571535	1	
42	Spring Guide	571536	1	
43	Socket Head Bolt	570980	12	Accumulator Bottom
44	Gas Bolt	676161	1	
45	Socket Head Bolt	103002	4	Refer to Table 4.3
46	Washer	NLW16000	4	
47	Socket Head Bolt	90564	4	Refer to Table 4.3
48	Plug	676159	6	
49	Socket Head Bolt	90518	12	
50	Washer	571674	12	
51	Spring	571672	1	
52	Lock Ring	571673	1	
53	Hex Head Bolt	900017	4	
54	Washer	571055	4	
55	Plug	571708	1	
56	Plug	102241	2	
57	Plug	676158	1	
58	Spring	B2506870	1	
59	---	---	---	Option not available
60	Grease Nipple	816675	2	
61	Snap Ring	570072	4	
62	Rubber Plug	102412	4	
63	Snap Ring	571801	1	
64	Rubber Plug	571800	1	
65	Bolt	91100	4	
66	---	---	---	Option not available
67	---	---	---	Option not available
68	---	---	---	Option not available
69	Air Vent Plug	B2006870	2	

4.0 Parts Information – [cont'd]

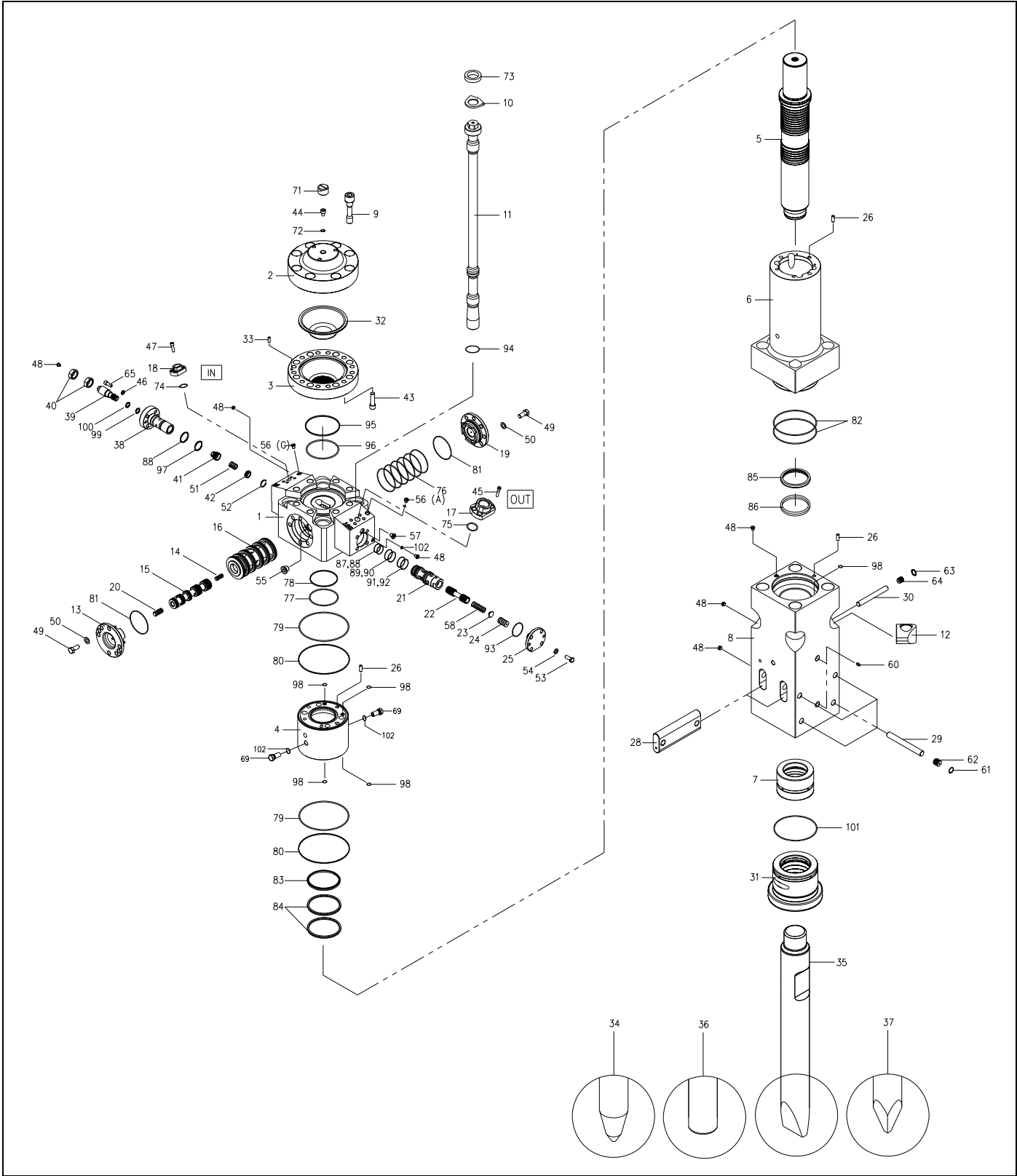


Fig. 4-2 Breaker Assembly

4.0 Parts Information – [cont'd]**Table 4.2 Breaker Assembly - (cont'd)**

<u>Item</u>	<u>Description</u>	<u>Part No.</u>	<u>Qty</u>	<u>Remarks / Specifications</u>
70	---	---	---	Option not available
71	Cap	102262	1	Accumulator
72	Usit-Ring	676201	1	
74	O-Ring	677977	1	Refer to Table 4.3
75	O-Ring	659275	1	Refer to Table 4.3
76	O-Ring	571693	6	
77	O-Ring	571694	1	
78	Back-up Ring	571703	1	
79	O-Ring	572993	2	
80	Back-up Ring	B3207110	2	
81	O-Ring	571696	2	
82	O-Ring	571695	2	
83	Wiper	B3207120	1	
84	U-Packing	B3207130	2	
85	Seal	B3207160	1	
86	Wiper	B3207170	1	
87	Back-up Ring	101788	1	
88	O-Ring	100109	2	
89	O-Ring	676203	1	
90	Back-up Ring	676205	1	
91	O-Ring	100107	1	
92	Back-up Ring	571705	1	
93	O-Ring	676248	1	
94	O-Ring	571698	4	
95	O-Ring	571699	1	
96	Back-up Ring	571706	1	
97	O-Ring	B2507200	1	
98	O-Ring	571004	5	
99	O-Ring	676200	1	
100	Back-up Ring	B3206940	1	
101	O-Ring	B3207180	1	Use on 31 is discontinued
102	O-Ring	676209	2	SN-1006 ~ Up

4.0 Parts Information – [cont'd]

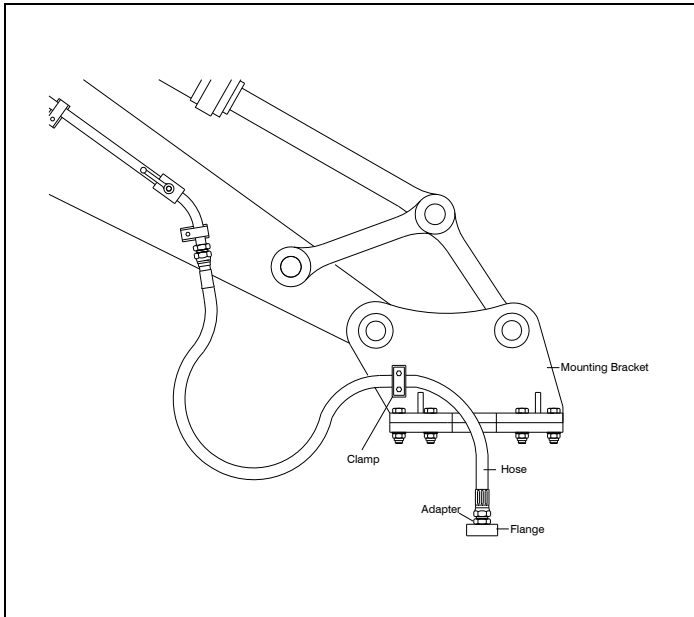


Fig. 4-3 Hose Routing To Excavator - Typical

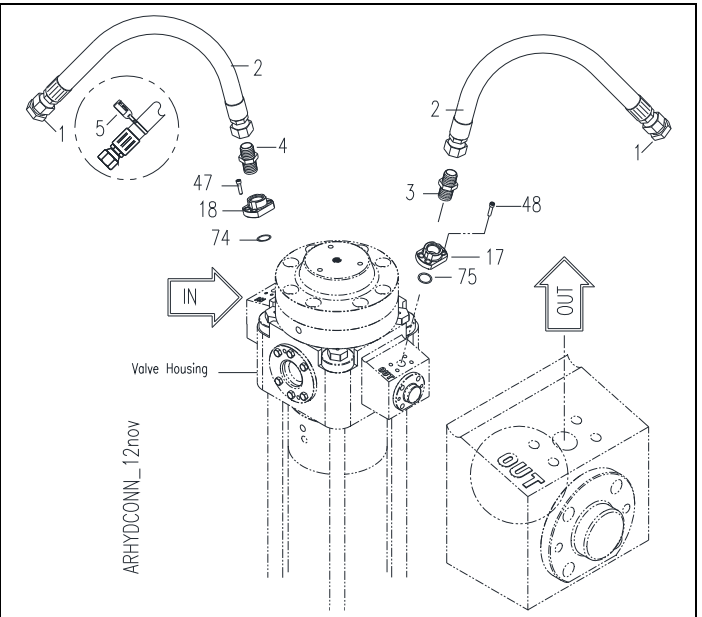


Fig. 4-4 Hydraulic Connections

Table 4.3 Hydraulic Connections (*Standard Configuration Shown)

<u>Item</u>	<u>Description</u>	<u>Part No.</u>	<u>Qty</u>	<u>Remarks / Specifications</u>
1	Plug	815152	2	20JIC
2	Hose	678011	2	1 ¼ x 102"
3	Adapter	719151	1	20SORB
4	Adapter	719320	1	16SORB
5	Pressure ID Tag	818676	1	Attach to Pressure Line [IN]
17	Flange Adapter [OUT]	572704	1	1 ¼" (20)
18	Flange Adapter [IN]	572705	1	1" (16)
45	Socket Head Bolt	103002	4	M14
47	Socket Head Bolt	90564	4	M12
74	O-Ring	677977	1	
75	O-Ring	659275	1	

5.0 Tool Selection Guide – Standard & Specialty

5.1 Tools - Standard Type

The three most commonly used tool points for concrete demolition, rock cutting and boulder reduction are the Conical, Chisel and Blunt.

A. Chisel (Wedge – Cross Cut or In-Line) – Suitable applications include soft rock and general demolition of concrete. The tool penetrates into the material, forcing it to

separate. Useful when cutting action is required, e.g. benching and trenching.

B. Conical Point - Same applications as the chisel. The conical point penetrates the material and its shape makes it less prone to twisting which can lead to burring of the tool's retainer pin.

C. Blunt Tool – Designed for impact breaking. The blunt tool is effective in secondary breaking of oversized rock or boulder reduction.

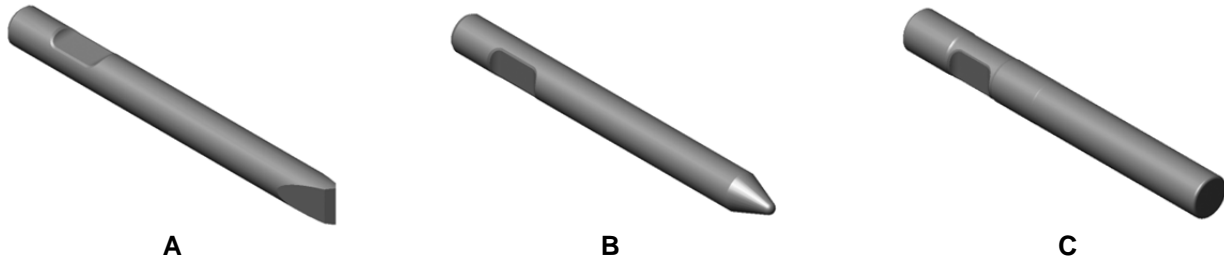


Fig. 5-1 Standard Tool Types Identified A thru C.

5.1.2 Tools - Specialty Type*

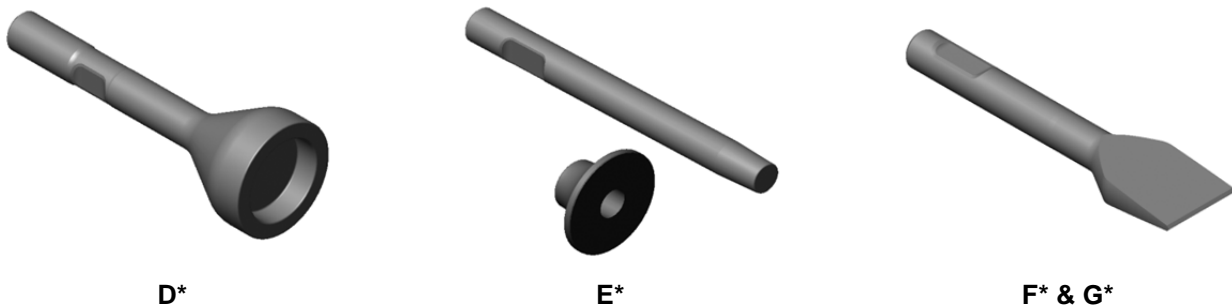


Fig 5-2 Specialty Tool Types Identified D thru G.

Specialty tools have a specific purpose or function designed into each tool. These tools can extend the versatility of a hammer, thus increasing productivity and eliminating the need for additional equipment.

General illustrations shown. Actual design may vary. For availability of tool types not listed, contact Allied.

*Not available for all models.

D. Post Driver – For driving posts, pipes, etc.

E. Tamper – Designed to compact loose material.

F. Frost Cutter – For cutting into frozen ground.

G. Asphalt Cutter – Designed to cut seams in asphalt for removal. Useful when removing asphalt to dig a trench. Available in Cross-Cut and In-Line configurations.

5.0 Tool Selection Guide

Table 5.1 Standard Tools

<u>Item</u>	<u>Description</u>	<u>Part No.</u>	<u>TD³⁾ x WL⁴⁾ in. (mm)</u>	<u>Weight – lbs. (kg)</u>
34-B	Conical Point	575146	6.50 [165] x 28 (711)	432 (196)
35-A¹	Chisel Cross Cut	575137	6.50 [165] x 28 (711)	445 (202)
---	Chisel In-Line	--- ²	---	---
36-C	Blunt End	575147	6.50 [165] x 26 (644)	449 (204)
37	Pyramid (Not Pictured)	--- ²	6.50 [165] x 28 (711)	430 (195)

¹⁾ Standard tool supplied with breaker

²⁾ For availability of tool types not listed, contact Allied

³⁾ TD - Tool Diameter

⁴⁾ WL - Working Length

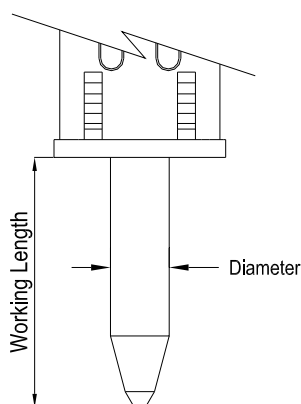


Fig. 5-2 Tool Diameter & Working Length

5.3 Allied Chisel Paste

Wear costs money, sometimes lots of money. Without proper lubrication, bushings and tools will quickly wear from friction related damage.

When choosing grease to lubricate the bushing and tool, it's important to emphasize that the "right type" is equally important as "how much" and "how often".

A key element in minimizing wear is through the regular use of a high-quality lubricant. Formulated as a 'specialty' lubricant, Allied Chisel Paste is ideally suited for use in heavy loaded, sliding motion and high temperature applications.

Allied Chisel Paste outperforms 'Multi-purpose' type grease, when used in this application, due to its unique formula with added solids. Solid lubricants, which include fine particles of molybdenum, graphite and copper, combine to form a protective layer between metal parts which minimize direct surface

contact during periods of heavy loading (extreme pressure).

Grease labeled 'General / Multi-Purpose' may contain modest amounts of solid lubricants - if any at all. At times when the tool is thrust against the bushing, the liquid lubricant is squeezed out, exposing unprotected surfaces to damage from friction.

Many factors, including operator technique, determine whether the breaker will remain productive. But with attention to preventive maintenance practices, including timely lubrication, and through the regular use of Allied Chisel Paste, the usable service life of these parts can be maximized while the cost to replace them and loss of production from down time is minimized.

5.3.1 Packaging & Ordering Information

Table 5.2 Chisel Paste

<u>Container</u>	<u>Packaging</u>	<u>Part No.</u>
14.5 oz. Cartridge*	Qty x 10	574430
14.5 oz. Cartridge*	Qty x 30	574431
35 lbs. Bucket	Qty x 1	676698
120 lbs. Drum	Qty x 1	679968

*Cartridge fits standard hand-type grease gun

6.0 Service Kits and Tools

6.1 Tune-up Kit

All breakers require regular maintenance and periodic parts replacement. Follow the recommended service schedule to maintain reliable service.

Tune-up kits can help restore performance by replacing common wear parts. Tune-up kits offer the convenience of combining parts that usually need to be replaced at the same time into one pre-packaged kit.

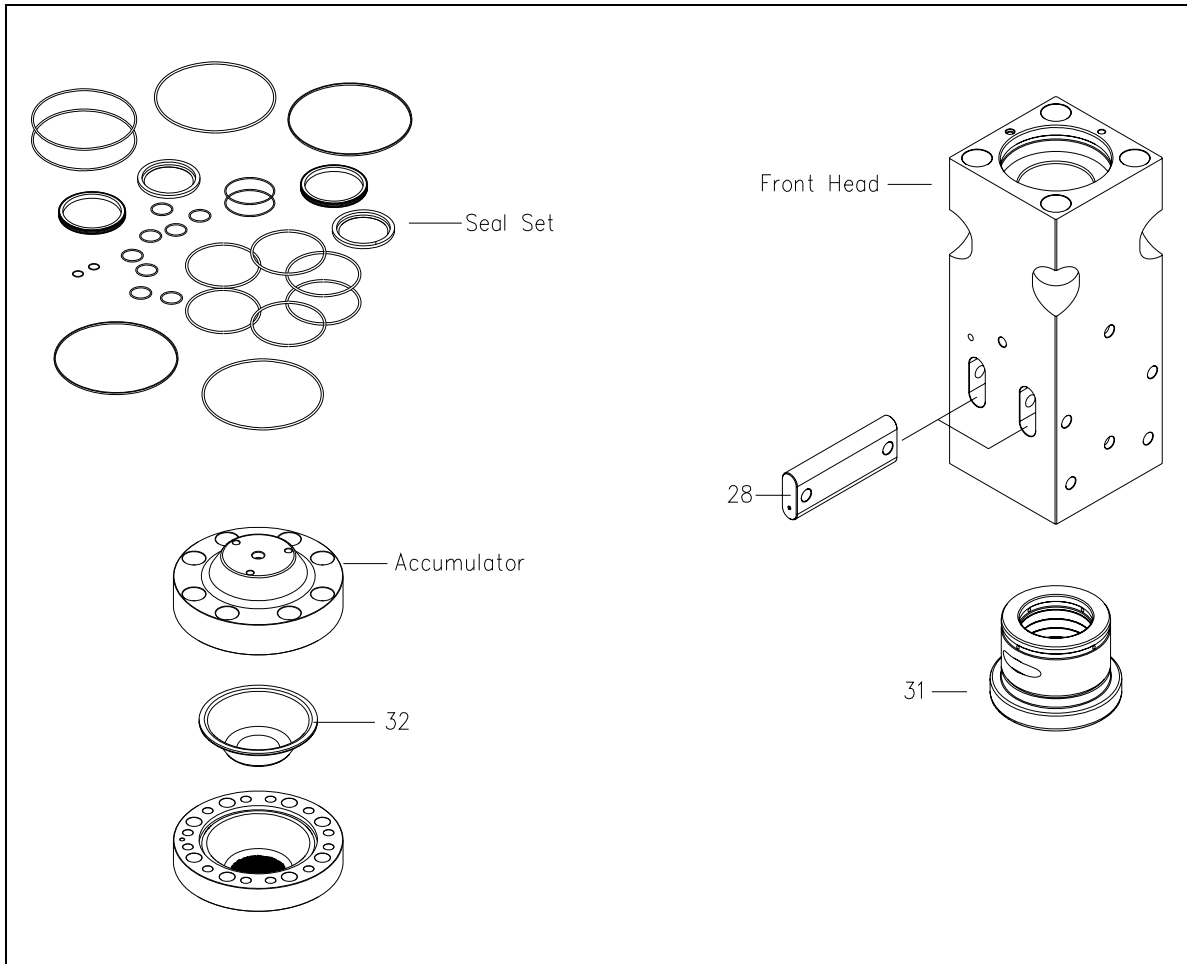


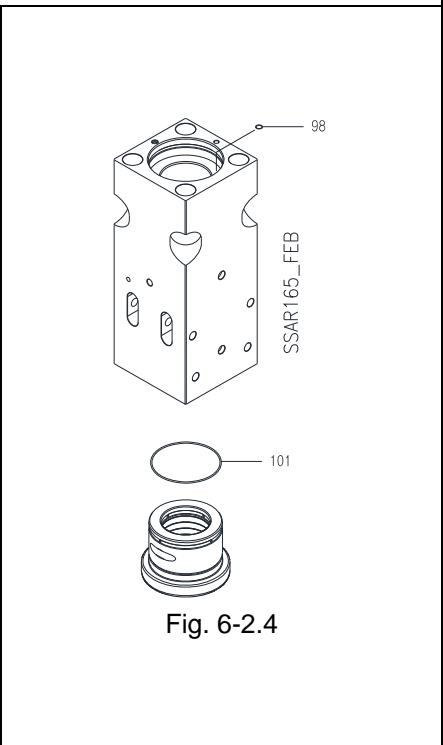
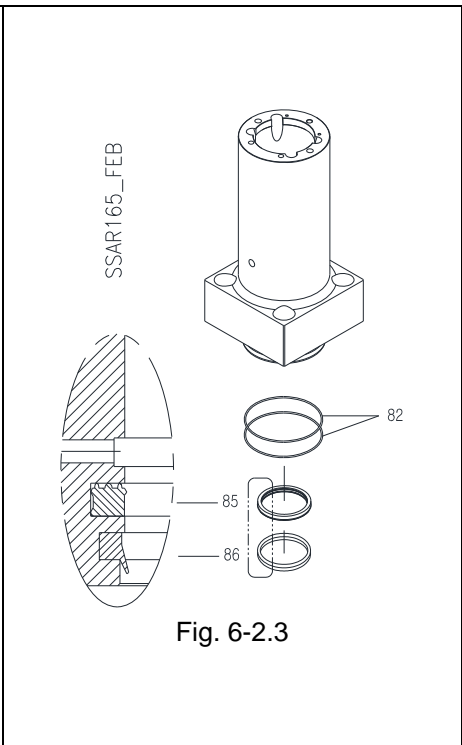
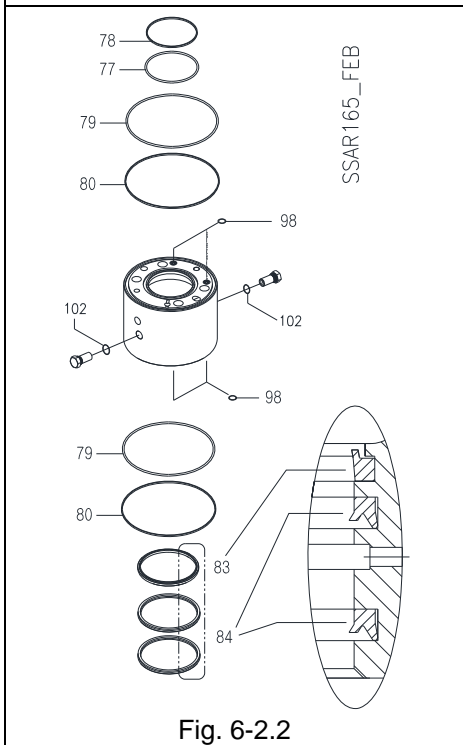
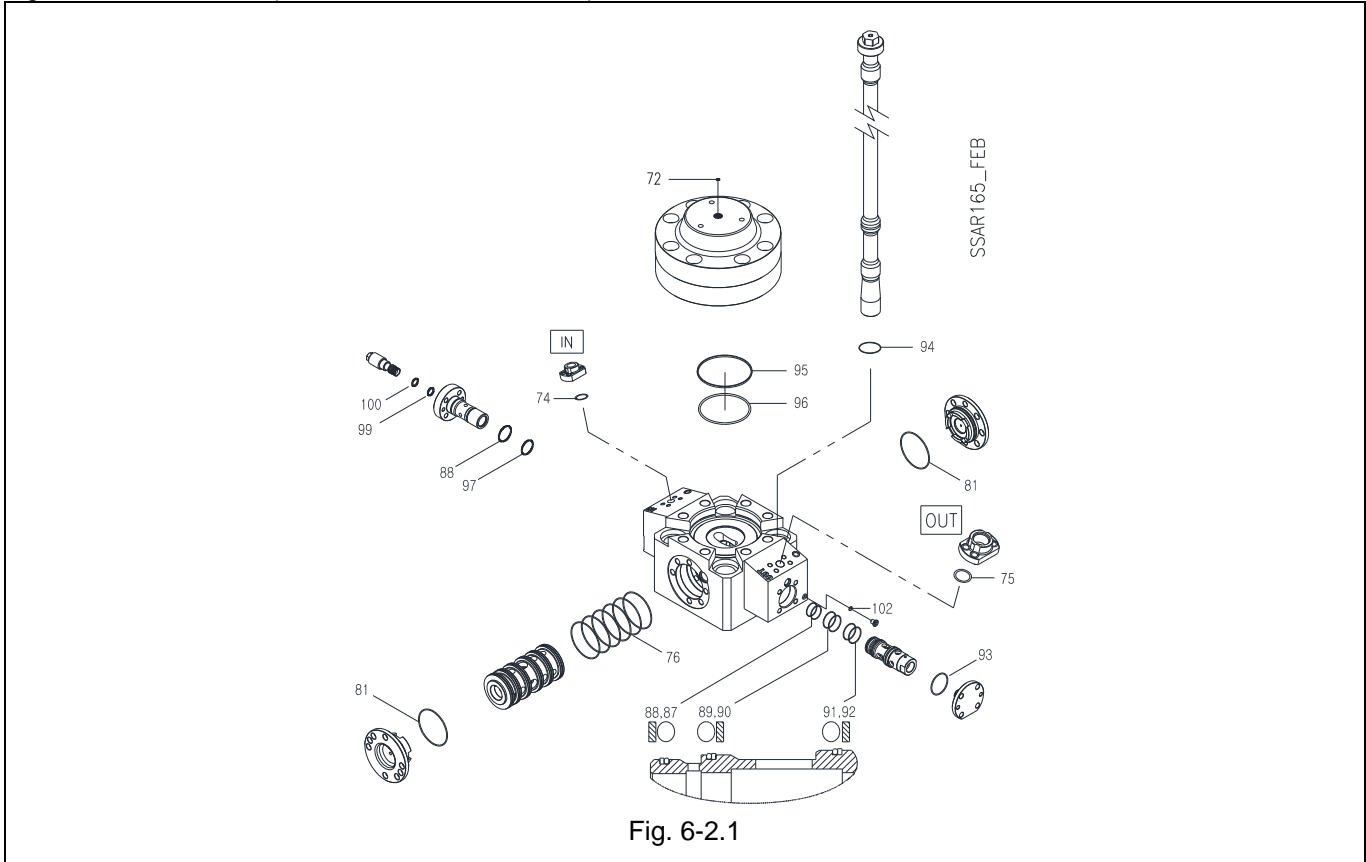
Fig. 6-1 Tune-up Kit

Table 6.1 Tune-up Kit

Item	Description	Part No.	Qty	Remarks / Specifications
---	Tune-up Kit	575299	1-Kit	Kit Includes Seal Kit & Items 28,31,32
---	Seal Set	575298	1	
28	Tool Pin	B3206340-01	2	SN-1004 ~ Up
31	Lower Tool Bushing	B3206840-03	1	
32	Accumulator Membrane	570979	1	

6.0 Service Kits and Tools – [cont'd]

Fig 6-2 Seal Positions (AR165 Seal Set – 575298)



Keep seals properly stored in their original, sealed package until ready for use. Refer to Manual 575290 for proper assembly of parts.

6.0 Service Kits and Tools – [cont'd]**Table 6.2 Seal Set**

Pos	Description	Part No.	Qty	Remarks / Specifications
---	Seal Set	575298	1-Set	Set Includes All Items Listed In Table 6.2
72	Usit-Ring	676201	1	
74	O-Ring	677977	1	
75	O-Ring	659275	1	
76	O-Ring	571693	6	
77	O-Ring	571694	1	
78	Back-up Ring	571703	1	
79	O-Ring	572993	2	
80	Back-up Ring	B3207110	2	
81	O-Ring	571696	2	
82	O-Ring	571695	2	
83	Wiper	B3207120	1	
84	U-Packing	B3207130	2	
85	Seal	B3207160	1	
86	Wiper	B3207170	1	
87	Back-up Ring	101788	1	
88	O-Ring	100109	2	
89	O-Ring	676203	1	
90	Back-up Ring	676205	1	
91	O-Ring	100107	1	
92	Back-up Ring	571705	1	
93	O-Ring	676248	1	
94	O-Ring	571698	4	
95	O-Ring	571699	1	
96	Back-up Ring	571706	1	
97	O-Ring	B2507200	1	
98	O-Ring	571004	5	
99	O-Ring	676200	1	
100	Back-up Ring	B3206940	1	
101	O-Ring	B3207180	1	Use discontinued on item 31
102	O-Ring	676209	2	SN-1006 ~ Up
---	Thread Lube 2 oz.	676927	1	Follow application instructions

IMPORTANT

Contamination interferes with reliable operation and will shorten component life. Prevent dirt and debris from entering the hydraulic system. Always work in a clean area. Keep seals properly stored in their original sealed package until ready for use.

IMPORTANT

Seal set includes a packet of thread lube and is intended for use on the side rod threads. **DO NOT APPLY TO SEALS!**

6.0 Service Kits and Tools – [cont'd]

6.3 Accumulator N2 Gas Charge Equipment

The accumulator is a self-contained pressure vessel with an elastic membrane dividing the inner chamber. The lower chamber is used to receive, store and discharge pressurized oil while the upper chamber contains nitrogen gas under pressure.

Replacement of the membrane will require refilling. This is accomplished with the use of a commercially available nitrogen bottle and the charging tool.

Components of the N2 gas charge kit are identified in the figure and table below.

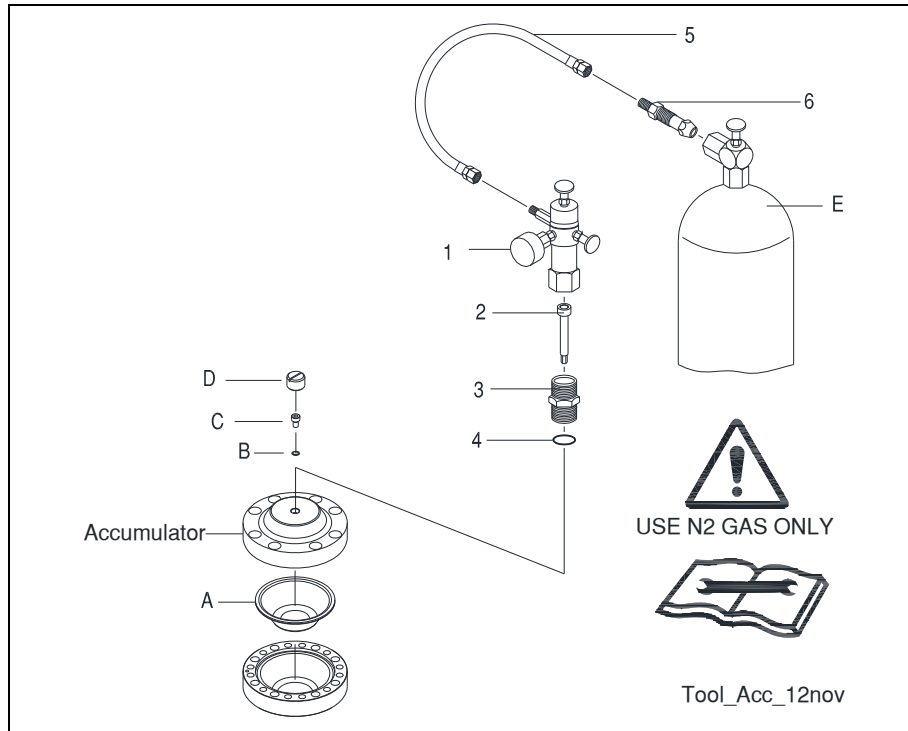




Fig. 6-3 Accumulator N2 Gas Charge Tool

Table 6.3 N2 Gas Charge Kit

Item	Description	Part No.	Qty	Remarks / Specifications
---	N2 Gas Charge Kit	570071	1-Kit	Kit includes 1,2,3,4,5,6
1	Charge Valve with Gauge	100527	1	Includes 2-6 (& storage case - not shown)
2	Socket Bolt	40601	1	
3	Adaptor	R101635	1	
4	O-ring	901135	1	
5	Hose	N/A	1	8 Ft. [2.5 M] Not Available Separately
6	Adapter for N2 Gas Bottle	N/A	1	Not Available Separately
E	Nitrogen Gas Bottle	N/A	---	Not Available from Allied (Source Locally)
A,B,C, D,E	Membrane, U-sit ring, Bolt, Cap, N2 Gas Bottle	---	---	A,B,C,D,E Shown only for reference and are not included in charge kit.

 	<p>For safe and proper use of this tool, read, understand and follow all instructions given in the Safety, Operation & Maintenance 575290</p>
---	---

7.0 Mounting to the Carrier

7.1 Mounting Brackets

The mounting bracket (not included - order separately) is bolted to the connection plate located at the top of the housing box. Once it is installed, the breaker can be attached to the carrier.

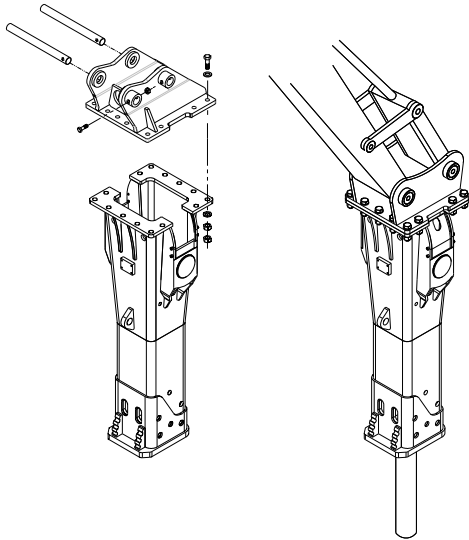


Fig. 7-1 Housing Box, Mounting Bracket & Hardware (Typical)

Allied offers an array of mounting brackets to fit virtually any carrier, including those equipped with pin-grab or hook style mounting couplers.

When ordering mounting brackets, complete information about the carrier (and coupler if equipped) is required – including:

Carrier make _____

Model _____

Series _____

Serial number _____

Coupler make _____

Model _____

Series _____

Serial Number _____

7.2 Connection Plate

Refer to Figure 7-2. The thickness of the plate, as well as other dimensions, including the quantity, diameter and spacing of the bolt holes will vary between breaker models.

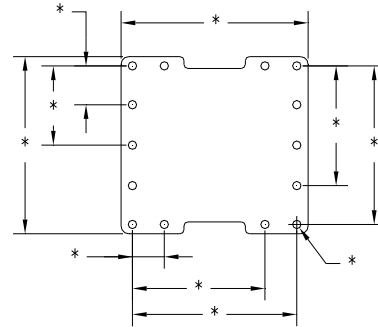


Fig. 7-2 Connection Plate – Dimensions Will Vary

Refer to Table 7.1. The “Family” designates the size of the connection plate that is welded to the housing box. Other Allied work tools, including the Ho-Pac® utilize these same mounting Families. Dimensions for these connection plates can be found in the Safety, Operation and Maintenance Manual.

Table 7.1 Mounting Family & Hardware (Qty)

Family	LR9
Model	AR160C, AR165, AR170C, AR175
Bolt	573167 (14)
FL Washer	573029 (28)
LK Washer	573028 (14)
Nut	90519 (14)

	<p>Tightening torque for these fasteners can be found in the Safety, Operation and Maintenance Manual 575290.</p>
--	---

8.0 How To Order Spare Parts

Your local Allied dealer requires the Product Name, Model and Serial Number to better assist you with questions regarding parts, warranty, operation, maintenance, or repair. This information should be noted in Section 2.3 of this manual.

Product Hydraulic Impact Breaker
 Model AR165
 Serial No. _____

Complete information is required

Line	Description	Part Number	Quantity	Price
1				
2				
3				
4				
5				
6				
7				
8				
9				
10				

Your contact information

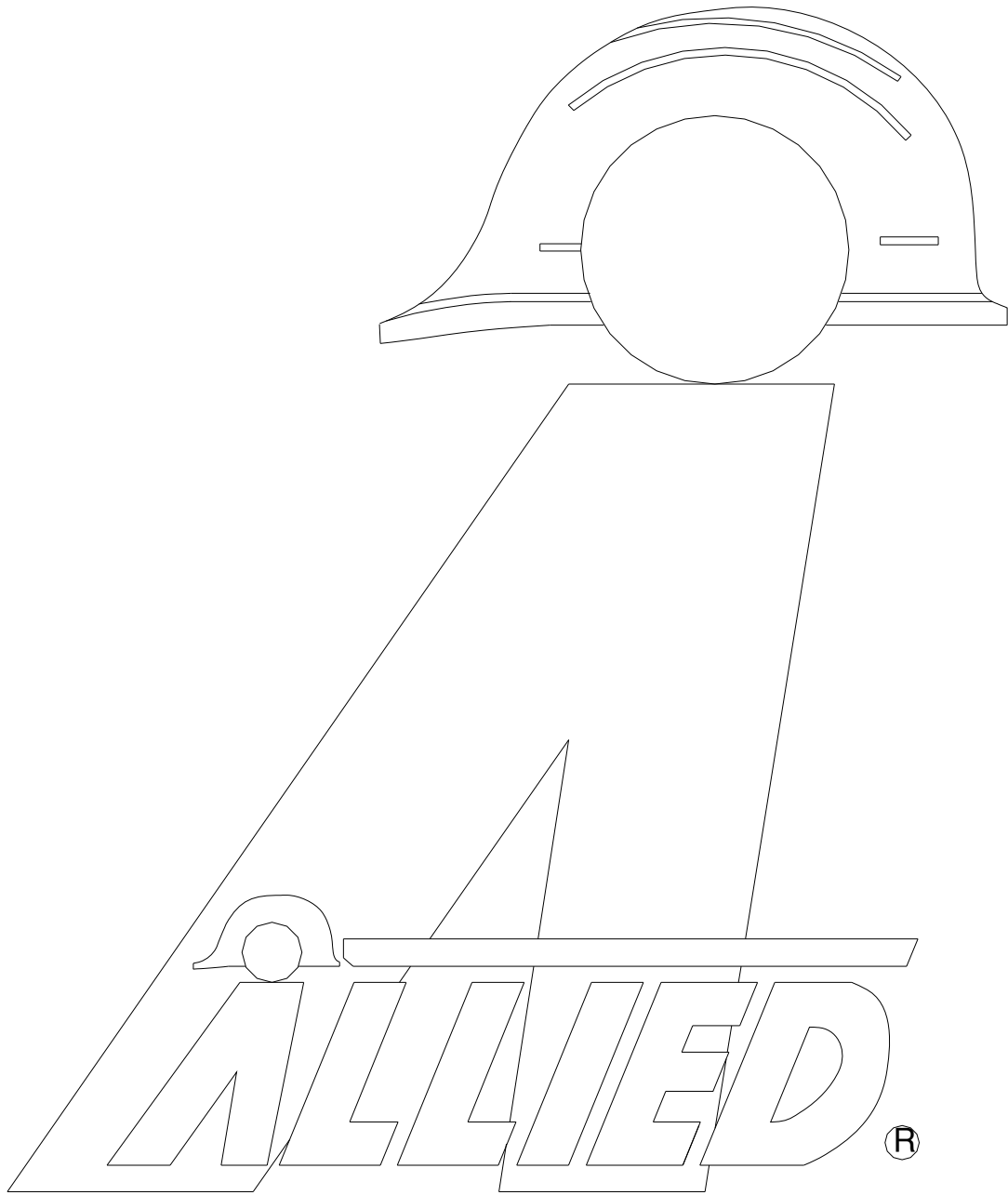
Your Name _____ Company Name _____
 Phone _____ Account Number _____
 Fax _____ Purchase order _____
 Email _____ Shipping carrier _____

*See note below

Billing Address _____ Shipping Address _____

***Note: All backordered parts will be shipped when available via the same method as the original order unless initialed and checked below:**

Initials _____
 Ship complete order only
 Ship available parts and contact customer on disposition of backordered parts
 Other – specify below




ALLIED®
Construction Products, LLC

3900 Kelley Avenue, Cleveland, Ohio 44114
Tel: 216-431-2600 Fax: 216-431-2601
e-mail: Sales@AlliedCP.com
website: <http://www.AlliedCP.com>