

# Hydraulic Impact Breaker

Model  
AR205



## Parts Manual **AR-SERIES**

Keep this manual in a convenient location so that it is easily accessible for future reference. Contact your Allied Dealer or the Allied Customer Service Department for replacement manuals. Inquiries regarding the content of this manual must include effective date shown on inside cover.





Contact Information

Allied Construction Products, LLC  
3900 Kelley Ave  
Cleveland, Ohio 44114

E-mail: [sales@alliedcp.com](mailto:sales@alliedcp.com)  
Tel: 216-431-2600  
Fax: 216-431-2601

Revision History of Document No. PM576462

Allied Construction Products, LLC, reserves the right to change, edit, delete or modify the content of this document, including descriptions, illustrations and specifications without prior notification. Specifications are based on published information at the time of publication. Go to [www.alliedcp.com](http://www.alliedcp.com) for product or document updates

<u>Date</u>	<u>Page</u>	<u>Summary of Change</u>
Feb 20, 2013	---	Introduction of Parts Manual 576463

## Table of Contents

<b><u>Section</u></b>	<b><u>Page</u></b>
<b>Contact Information.....</b>	<b>i</b>
<b>Document Revisions.....</b>	<b>i</b>
<b>Table of Contents.....</b>	<b>ii</b>
<b>1.0 Introduction &amp; Scope.....</b>	<b>1</b>
1.1 Purpose of This Manual.....	1
1.2 About This Manual.....	
1.3 How to Order Replacement Manuals.....	1
1.4 Related Publications.....	1
<b>2.0 Equipment Identification.....</b>	<b>3</b>
2.1 Serial Number Location.....	3
2.2 Equipment Identification Tag.....	3
2.3 Owner's Record of the Equipment.....	3
<b>3.0 Safety &amp; Information Labels.....</b>	<b>4</b>
<b>4.0 Identification of Spare Parts.....</b>	<b>7</b>
4.1 Housing Box and Components.....	7
4.2 Breaker Assembly.....	9
4.3 Hydraulic Connections.....	15
<b>5.0 Tool Selection Guide.....</b>	<b>16</b>
5.1 Standard Tools.....	16
5.2 Specialty Tools.....	16
5.3 Chisel Paste.....	17
<b>6.0 Service Kits and Tools.....</b>	<b>18</b>
6.1 Tune-Up Kit.....	18
6.2 Seal Set.....	19
6.3 Accumulator N2 Gas Charge Tool Kit...	21
<b>7.0 Mounting to the Carrier.....</b>	<b>22</b>
7.1 Mounting Brackets.....	22
<b>8.0 How To Order Spare Parts.....</b>	<b>23</b>

<b><u>List of Figures</u></b>	<b><u>Page</u></b>
2-1 Equipment ID Tag Location.....	3
2-2 Equipment Identification Tag.....	3
3-1 thru 3-14 Safety & Information Labels.....	4
3-15 Location of Labels on Equipment.....	6
4-1 Housing Box & Components.....	7
4-2 Breaker Assembly.....	9
4-3 Hose Routing To Excavator – Typical....	15
4-4 Hydraulic Connections.....	15
5-1 Standard & Specialty Tools.....	16
5-2 Tool Diameter & Working Length.....	17
6-1 Tune-up Kit.....	18
6-2 Seal Set.....	19
6-3 Accumulator N2 Gas Charge Tool Kit....	21
7-1 Mounting Bracket - Typical .....	22
7-2 Mounting Connection Plate Family.....	22

## 1.0 Introduction and Scope

### 1.1 Purpose of This Manual

The Parts Manual identifies each component of the Allied work tool including safety and information labels. Illustrations shown in the Parts Manual are not intended for use in the repair or service of the breaker.

### 1.2 About This Manual

This manual is an integral part of this product. Keep it in a convenient location so that it is easily accessible for future reference.

**Table 1.1 About This Manual**

Document ID. No.	PM576463
Category	Spare Parts
Current Status	See Inside Cover
Product Name:	Mounted Hydraulic Impact Breaker
Series	AR
Applicable Model[s]:	AR205
Years of Manufacture:	2013 & above

Verify that the content in Table 1.1 corresponds with the information located on the Equipment's Identification Tag. Material presented in this Manual, including part name, part number, figures, descriptions and remarks, may not be suitable for models that are not listed in Table 1.1.

The content of this publication has been reviewed for accuracy. Allied Construction Products, LLC has endeavored to deliver the highest degree of accuracy possible. However, continuous improvement of our products is an Allied policy. The material in this publication, including descriptions, illustrations and specifications, describes the product at the time of its publication, and may not reflect the product in the future. Changes made to the content of this publication are recorded on the inside cover.

### 1.3 How To Order Replacement Publications

Replacement manuals can be ordered by contacting your Allied dealer service center. These manuals may also be viewed and downloaded at: [www.alliedcp.com](http://www.alliedcp.com)

### 1.4 Related Publications

This document is published solely for information purposes and should not be considered all-inclusive. Requests for further information should be directed to your local Allied dealer or the Allied Customer Service Department.

Allied Construction Products, LLC offers the following publications for the product identified in Table 1.1.

#### Safety, Operation & Maintenance Manual 575290

Applicable Models: AR-Series 165,175,180D,205

The Safety, Operation and Maintenance Manual has been prepared to assist the operator and maintenance personnel with the information necessary for the safe and proper use of the Allied work tool.

Content in the Safety, Operation & Maintenance Manual includes:

Safety Information  
Equipment Serial Number and Model Identification  
Technical Data (Weight & dimensions)  
Basic Guidelines for Installation and Set-up  
Pre-Operation Inspection  
How to Operate the Allied Work Tool  
Maintenance Schedule  
N2 Gas Charging Instructions  
Tool and Guide Bushing – Lubrication, Inspection, Wear Limits and Replacement  
Troubleshooting  
Removal From Carrier, Transporting, Lifting & Storage

#### Repair Manual 572591

Applicable Models: AR-Series 165,175,180D,205

The Repair Manual has been prepared to assist the Service Technician with the information necessary for the disassembly & reassembly of the Breaker. Content includes:

Safety Information  
Disassembly & Reassembly  
Bolt Torque Specifications  
Wear Limits of Parts  
N2 Gas Charging Instructions  
Bushing Replacement

## 1.0 Introduction and Scope – [cont'd]

### 1.4 Related Publications – cont'd

#### **AEM Safety Manual for Hydraulic Breakers**

The Association of Equipment Manufacturers offers a safety manual designed for operators and maintenance personnel of hydraulic mounted breakers. The manual is available in Spanish, French and English. It is published in an illustrated format of sensible do's and don'ts, featuring typical daily situations on the job site. Content includes safety tips concerning the workplace and equipment, start up and shut down guidelines and special operating and maintenance precautions.

This publication is available by contacting:

Association of Equipment Manufacturers

Toll free 1-866-AEM-0442

E-mail: [aem@aem.org](mailto:aem@aem.org)

Website: [www.aem.org](http://www.aem.org)

Ask for FORM CMHB-1004, Hydraulic Mounted Breakers.

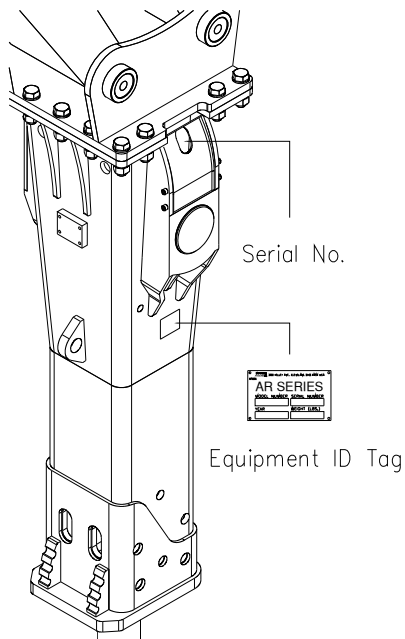
This publication is also available through Allied under part number 953076 (English). To order a copy, contact the Allied Customer Service Department.

## 2.0 Equipment Identification

### 2.1 Model and Serial Number Location

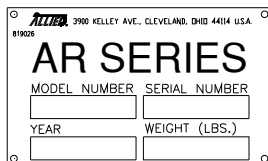
Refer to Figure 2-1. The Serial Number assigned to this equipment can be found in the following locations:

1. Located on the Equipment Identification Tag
2. Stamped on the Valve Housing



### 2.2 Equipment Identification Tag

The Equipment Identification Tag is affixed to the side of the housing.



**Fig 2-1 Equipment Identification Tag**

The ID Tag provides the following information:

- Allied Logo
- Street Address, City, State - USA
- Product name
- Model number
- Serial number
- Year of manufacture
- Weight

Confirm that the information contained on the Tag corresponds with the information provided in Section 1, Table 1.1.

### 2.3 Owner's Record of the Equipment

Record the Model and Serial Number from the Equipment Identification Tag to the space provided below.

Model AR205

Part Number: 576362

Serial Number: \_\_\_\_\_

In Service Date: \_\_\_\_\_

Product  
Registration Date \_\_\_\_\_

Indicate the date in which the Allied equipment was placed into service.

Register this equipment by returning the completed warranty registration form to Allied.


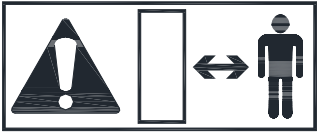

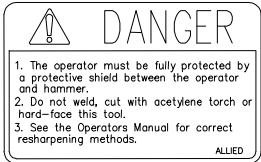



Your local Allied dealer requires this information to better assist you with questions regarding parts, warranty, operation, maintenance, or repair.

### 3.0 Safety Information & Identification Labels

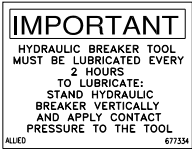
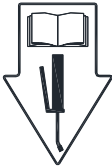
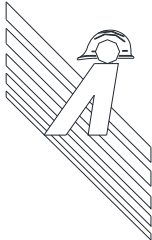


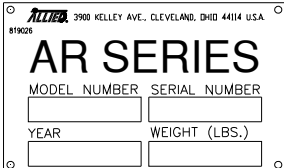
#### 3.1 Label Description and Location On Equipment

Labels affixed to the Allied equipment communicate important instructions. Safety labels alert personnel of potential hazards. Other labels provide product identification and instructions important to operation and service.

Keep labels clean so that words and illustrations are readable. Replace damaged or missing labels before operating this equipment. Refer to Table 3.1 for ordering information. Refer to Figure 3-15 for the position of the label on the equipment.

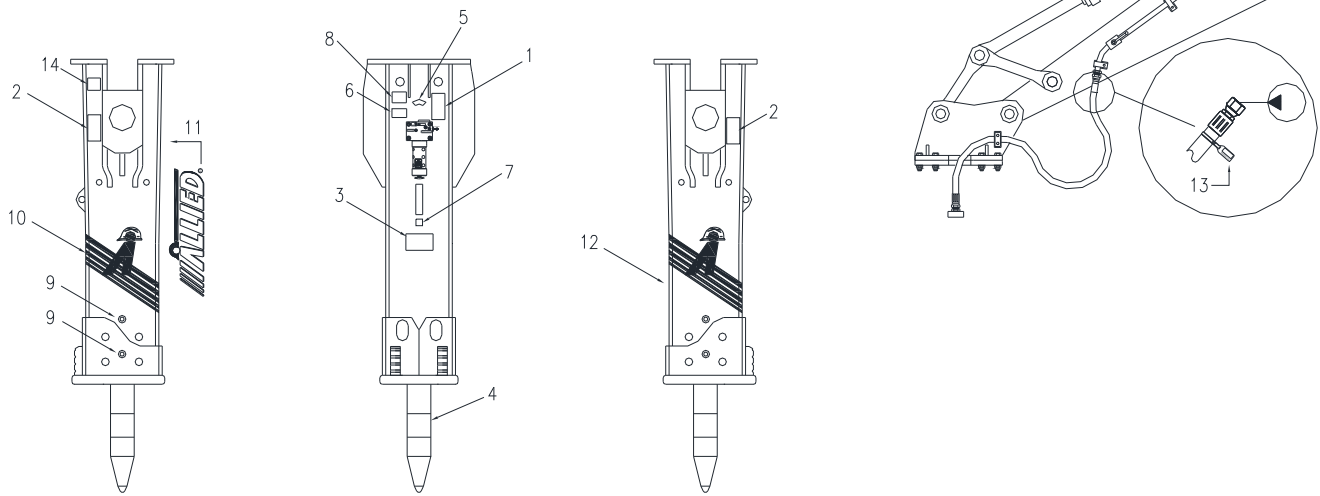
Figure	Label	Description
3-1		<b>Read The Manual</b> - Safety Alert Symbol with pictogram of open book. Gives notice of the importance of reading the manual(s) for information and/or instructions.
3-2		<b>Keep Clear</b> - Pictogram displays arrow distancing worker safely from work tool which is represented by the box. Breakers, or any other work tool, pose risk of injury to workers if they are not kept at a safe distance. Never operate the work tool with workers inside the work zone.
3-3		<b>Flying Debris Hazard</b> – Alerts personnel to the hazard of fragments becoming projectiles. A protective guard to shield the operator must be installed before operation of the breaker. Personnel are directed to the Operator's Manual for safety instructions. <b>NOTE: A smaller sized version of this decal is to be displayed in a conspicuous location inside the operator's cab.</b>
3-4		<b>Personal Protection Equipment / Tool Re-sharpening</b> – Alerts personnel to provide protective shielding between the operator and breaker. It also warns against welding, cutting, or hard-facing the tool. Personnel are directed to the Operator's Manual for approved re-sharpening methods.
3-5		<b>Pressurized Nitrogen Accumulator</b> – Alerts personnel to the accumulator, warning of nitrogen gas under pressure. Directs personnel to the Safety Operation and Maintenance Manual for service instructions.
3-6		<b>Maximum Pressure</b> – Alerts personnel the maximum operating pressure.
3-7		<b>Lift Point</b> – Pictogram of hook identifies approved lift points.

### 3.0 Safety & Identification Labels

Figure	Label	Description
3-8		<b>LUBRICATION</b> – Decal provides re-lubrication instructions, including; frequency and precautions that must be observed to ensure breaker is not damaged through unapproved methods.
3-9		<b>Lubrication Point</b> – Decal identifies lubrication points. Refer to the manual(s) for grease type, re-lubrication schedules and procedures. Risk of equipment damage if instructions are not followed.
3-10		Allied “A” with Hard Hat and Background Stripes
3-11		<b>ALLIED LOGO</b> – This decal is the Allied brand identifier and is a registered trademark of Allied Construction Products, LLC.
3-12	<b>AR205</b>	<b>MODEL</b> – Decal identifies the series and specific model.
3-13		<b>OIL SUPPLY LINE “PRESSURE” I.D. TAG</b> – A red colored cable tie marked “PRESSURE LINE” is attached to the supply hose for ease of identification between hoses.
3-14		<b>ID TAG</b> - Contains identifying information about the equipment, including: Manufacturer’s name, address, product name, model number, serial number, year of manufacture, and weight.



### 3.0 Safety & Identification Labels



**Fig. 3-15 Placement of Labels on Equipment**

**Table 3.1 Label Set**

Item	Description	Part No.	Qty	Remarks / Specifications
---	<b>Label Set</b>	<b>576465</b>	<b>1 Set</b>	<b>Set includes items 1-13</b>
1	Decal – Read Instructions	676984	1	
2	Decal – Stay Clear	657841	2	
3.1	Decal – Danger (Small)	657839	1	Place in conspicuous location inside cab
3.2	Decal – Danger (Large)	657840	1	
4	Decal – Tool Sharpening	657838	1	
5	Decal – Warning Pressurized Accumulator	102756	1	
6	Decal – Max Operating Pressure	659140	1	
7	Decal – Lift Point	676982	1	
8	Decal – Lube w/ Tool In	677334	1	
9	Decal - Lubrication Points	A101725	2	
10	Decal – Allied “A” with Hard Hat / Stripes	576284	2	
11	Decal – Allied	676656	1	
12	Decal – Model AR205	576418	1	
13	Pressure ID Tag	818676	1	Attach to pressure line
14	Equipment ID Plate	819026	1	This item is not included in Set

4.0 Parts Information

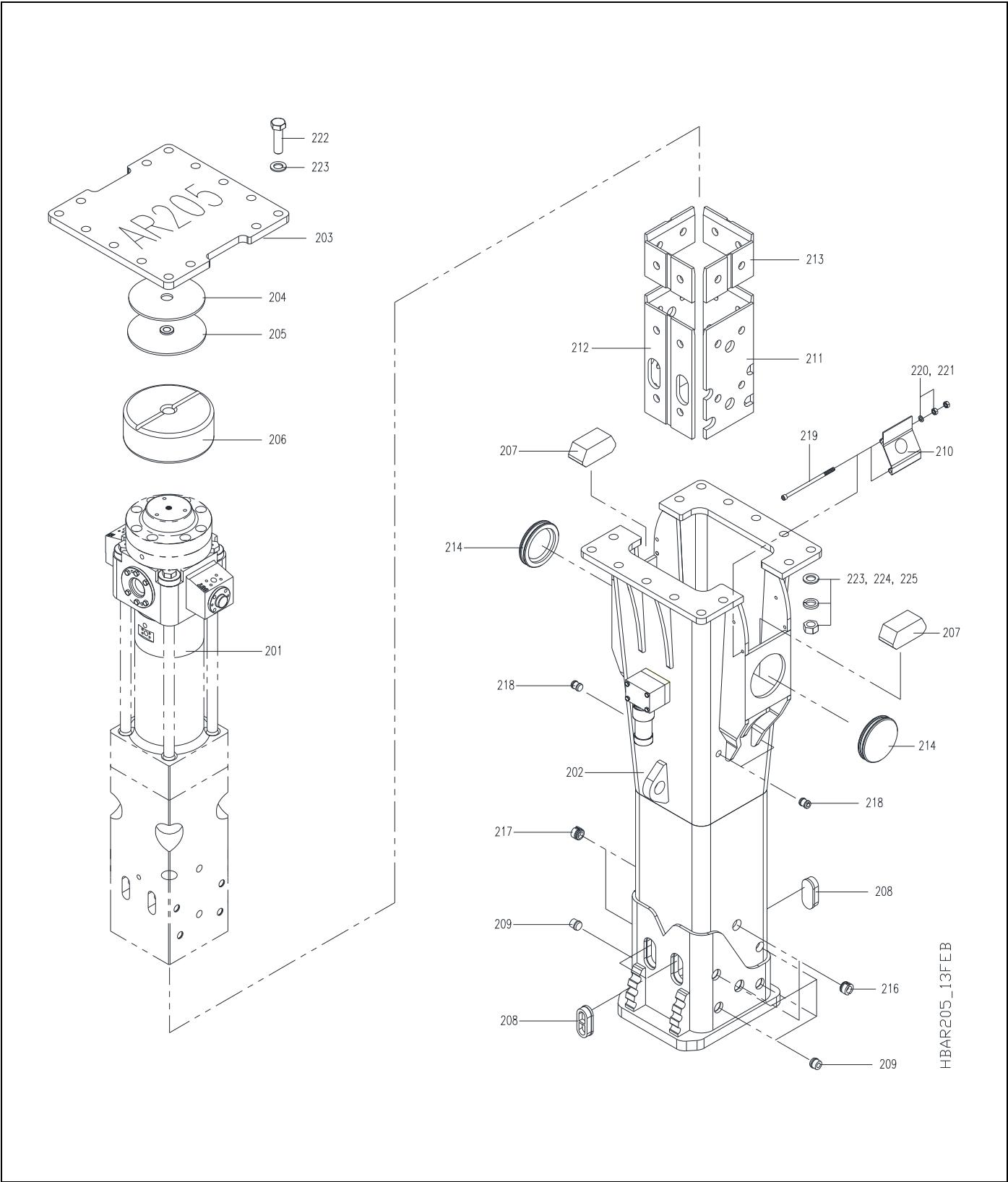


Fig. 4-1 Box Housing & Components (Shown with AutoLube HML Option)

**4.0 Parts Information – [cont'd]****Table 4.1 Housing Components (\*Standard Configuration)**

Item	Description	Part No.	Qty	Remarks / Specifications
---	Breaker with Housing Box	576362		
201	Breaker Ass'y	---	1	Refer to Table 4.2
202	Housing Box	B7502000	1	
203	Top Plate / Mounting Bracket	Varies	---	Item 203 not included. Order separately.
204	Top Wear Plate	B7502240	1	
205	Top Buffer Plate Ass'y	B7502250	1	
206	Top Buffer	B7502280	1	
207	Side Buffer	B7502290	2	
208	Rubber Plug	B7502300	4	
209	Rubber Plug	B7502310	8	
210	Port Cover IN, OUT	B7502320	2	
211	Wear Plate	B7502330	2	
212	Wear Plate	B7502340	2	
213	Wear Plate	B7502350	4	
214	Rubber Plug	B4000100	2	
216	Rubber Plug	575360	2	w/ Access to grease nipple
217	Rubber Plug	B3200050	2	
218	Rubber Plug	572960	6	
219	Socket Bolt	576393	4	
220	Washer -FL	575257	4	
221	Hex Nut	607264	8	
222	Hardware	Varies	---	Items 222, 223,224,225 Refer to Table 7.1

4.0 Parts Information – [cont'd]

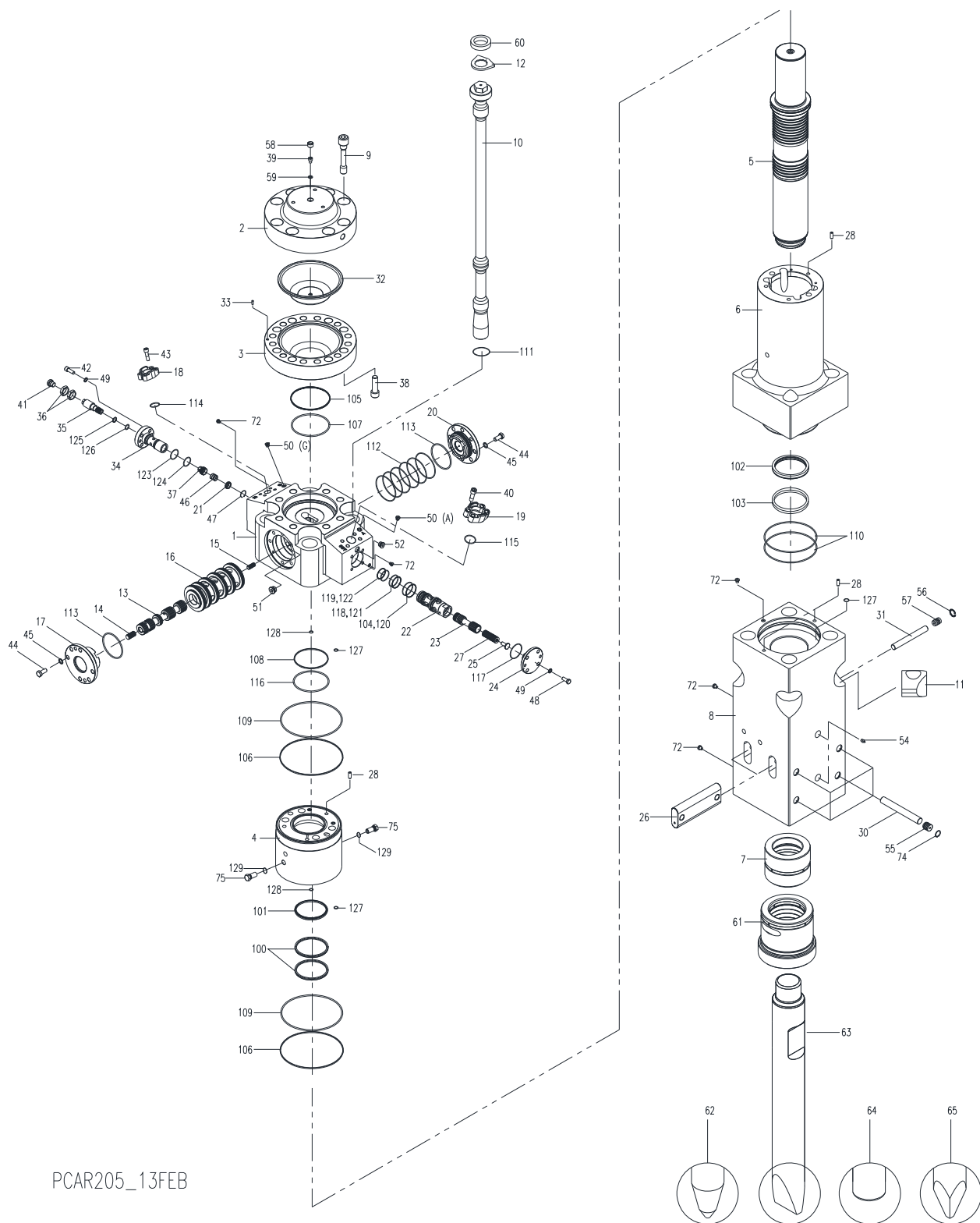


Fig. 4-2 Breaker Assembly

**4.0 Parts Information – [cont'd]****Table 4.2 Breaker Assembly**

Item	Description	Part No.	Qty	Remarks / Specifications
1	Valve Housing	B7501010	1	
2	Accumulator Cover	B7501020	1	
3	Accumulator Bottom	B7501030	1	
4	Seal Housing	B7501040	1	
5	Piston	B7501050	1	
6	Cylinder	B7501060	1	
7	Upper Bushing	B7501070	1	
8	Front Head	B7501080	1	
9	Socket Head Bolt	B7501090	8	
10	Side Rod	B7501100	4	
11	Side Rod Nut	B7501110	4	
12	Lock Washer	B7501120	4	
13	Main Spool	B7501130	1	
14	Spool 1	B7501140	1	
15	Spool 2	B7501150	1	
16	Sleeve	B7501160	1	
17	Sleeve Cover 1	B7501170	1	
18	Flange Adapter [IN]	574778	1	1-1/2 (24)
19	Flange Adapter [OUT]	574779	1	2 (32)
20	Sleeve Cover 2.	B7501180	1	
21	Check Valve Spring Guide	571536	1	
22	Oper. Valve Guide	B7501190	1	
23	Oper. Valve Spool	B7501200	1	
24	Oper. Valve Cover	B7501210	1	
25	Oper. Valve Spring Guide	B7501220	1	
26	Tool Pin	B7501230	2	
27	Oper. Valve Spring	B7501240	1	
28	Guide Pin	102545	4	
30	Bushing Pin	B7501260	4	
31	Upper Bushing Pin	B7501270	1	
32	Membrane	B7501280	1	
33	Guide Pin	676183	1	

4.0 Parts Information – [cont'd]

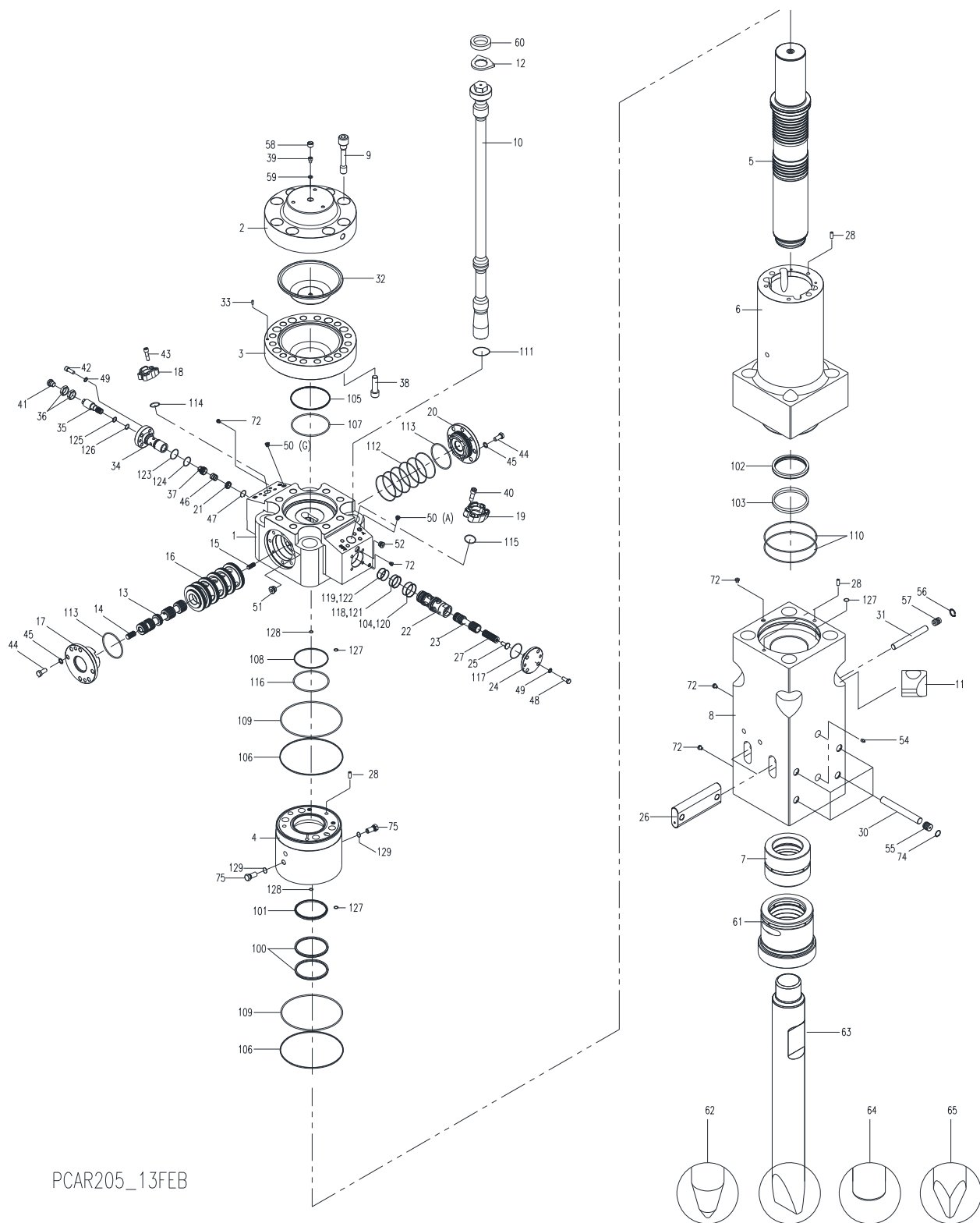
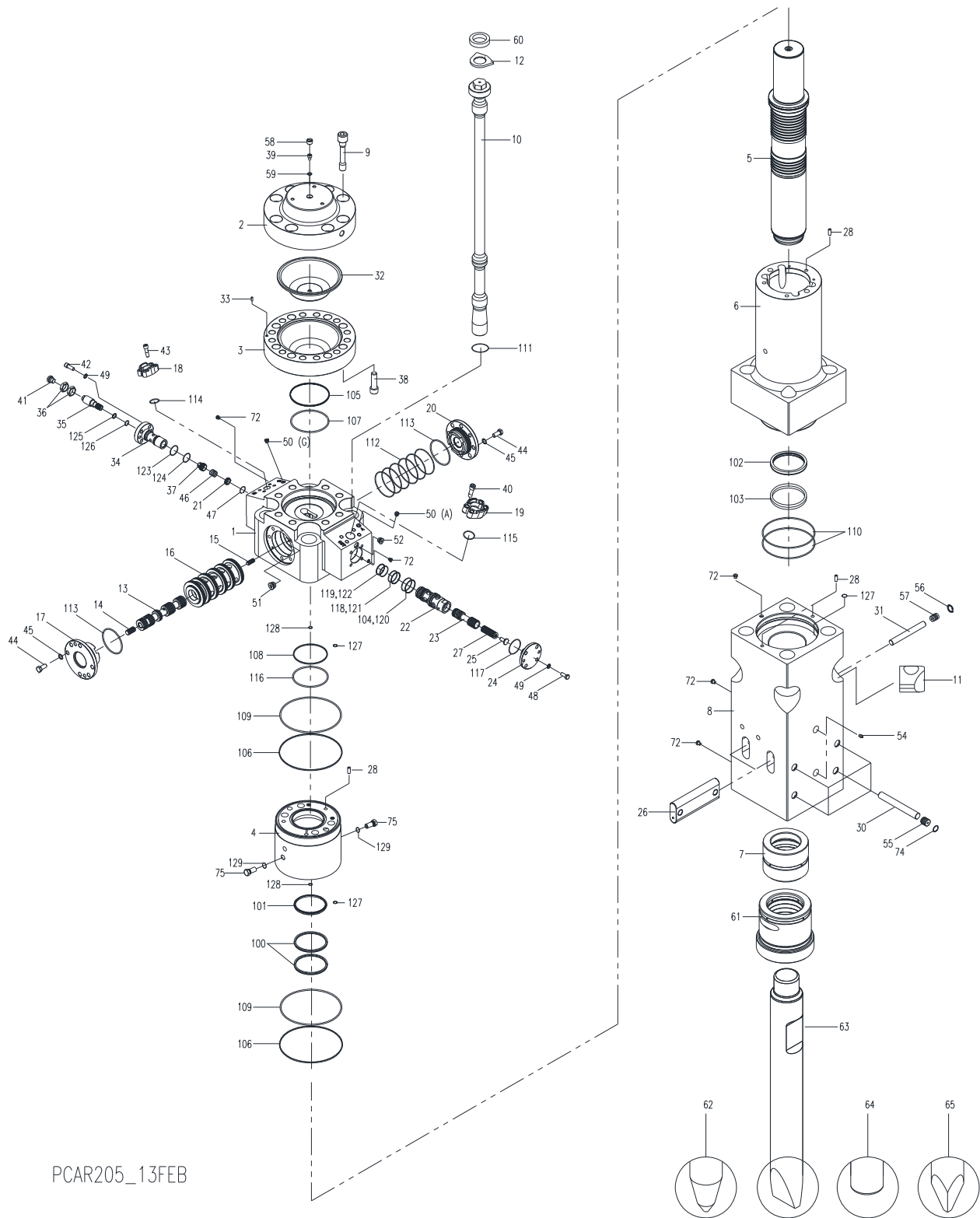


Fig. 4-2 Breaker Assembly

**4.0 Parts Information – [cont'd]****Table 4.2 Breaker Assembly - (cont'd)**

Item	Description	Part No.	Qty	Remarks / Specifications
34	Needle Valve Housing	B6006910	1	
35	Needle Valve Spool	B6006920	1	
36	Nut	B6006930	2	
37	Check Valve Spool	571535	1	
38	Socket Head Bolt	SB3020110	12	
39	Gas Bolt	676161	1	
40	Socket Head Bolt	91008	4	
41	Socket Plug	676159	6	
42	Socket Bolt	681067	4	
43	Socket Bolt	901309	4	
44	Sleeve Cover Bolt	90518	12	
45	Washer- NL	91010	12	
46	Check Valve Spring	571672	1	
47	Lock Ring	571673	1	
48	Hex. Bolt	900017	4	
49	Washer- NL	90597	8	
50	Socket Plug	102241	2	
51	Socket Plug	571708	1	
52	Socket Plug	90401	1	
54	Grease Nipple	816675	2	
55	Rubber Plug	B7501290	4	
56	Snap Ring	570072	1	
57	Rubber Plug	102412	1	
58	Accumulator Cap	102262	1	
59	Usit-Ring	676201	1	
60	Rubber Ring	B7501300	4	
61	Tool Bushing	B7501310	1	
62	Tool Selection	Varies	---	62,63,64,65 Tool Selection Table 5.1
74	Snap Ring	576394	4	
75	Air Vent Plug	B2006870	2	
100	Seal	B7507100	2	
101	Wiper	B7507110	1	
102	Seal	B7507120	1	
103	Wiper	B7507130	1	
104	Backup Ring	B7507140	1	

#### 4.0 Parts Information – [cont'd]



### Fig. 4-2 Breaker Assembly



**4.0 Parts Information – [cont'd]****Table 4.2 Breaker Assembly - (cont'd)**

Item	Description	Part No.	Qty	Remarks / Specifications
105	Backup Ring	B7507150	1	
106	Backup Ring	B7507170	2	
107	O-Ring	B7507180	1	
108	O-Ring	B7507190	1	
109	O-Ring	B7507200	2	
110	O-Ring	B7507210	2	
111	O-Ring	B7507220	4	
112	O-Ring	B7507230	6	
113	O-Ring	B7507240	2	
114	O-Ring	657364	1	
115	O-Ring	101205	1	
116	Backup Ring	B7507280	1	
117	O-Ring	101338	1	
118	Backup Ring	571705	1	
119	Backup Ring	676205	1	
120	O-Ring	676248	1	
121	O-Ring	100107	1	
122	O-Ring	676203	1	
123	O-Ring	100109	1	
124	O-Ring	676251	1	
125	Backup Ring	B3206940	1	
126	O-Ring	676200	1	
127	O-Ring	B7507290	3	
128	O-Ring	A2507380	2	
129	O-Ring	676209	2	

4.0 Parts Information – [cont'd]

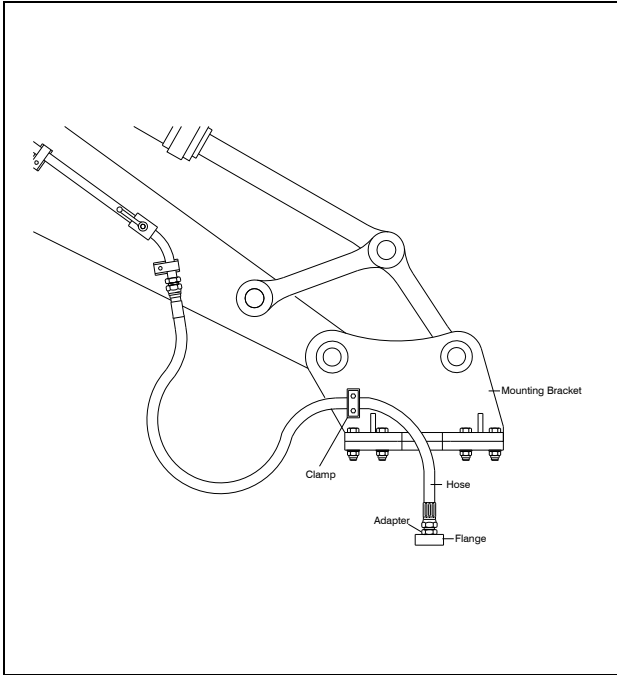


Fig. 4-3 Hose Routing To Excavator - Typical

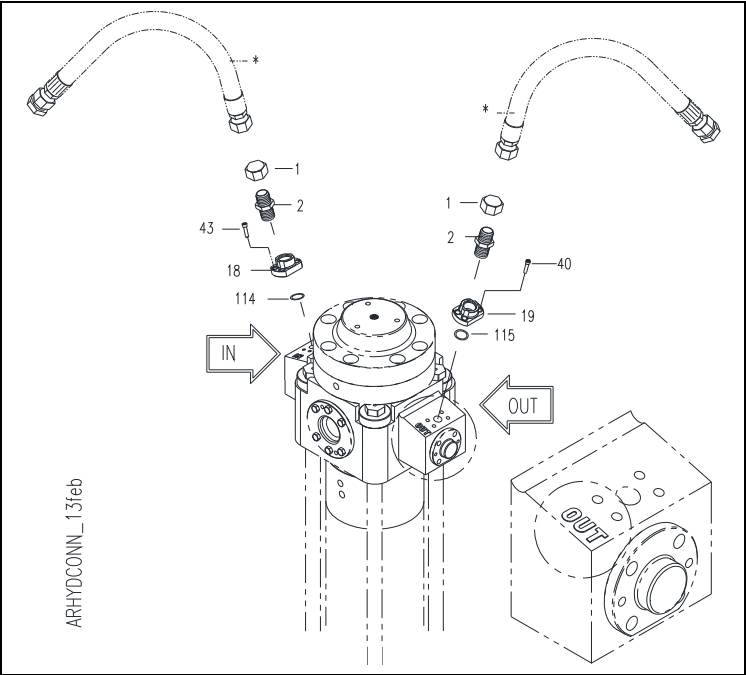


Fig. 4-4 Hydraulic Connections

Table 4.3 Hydraulic Connections (Hoses, mounting bracket shown for reference only)

Item	Description	Part No.	Qty	Remarks / Specifications
*	Hose	---	---	Not included (Order separately)
1	Cap	851106	2	
2	Adapter	814261	2	
18	Flange Adapter [IN]	574778	1	1-1/2 (24)
19	Flange Adapter [OUT]	574779	1	2 (32)
40	Socket Head Bolt	91008	4	
43	Socket Head Bolt	901309	4	
114	O-Ring	657364	1	
115	O-Ring	101205	1	

## 5.0 Tool Selection Guide

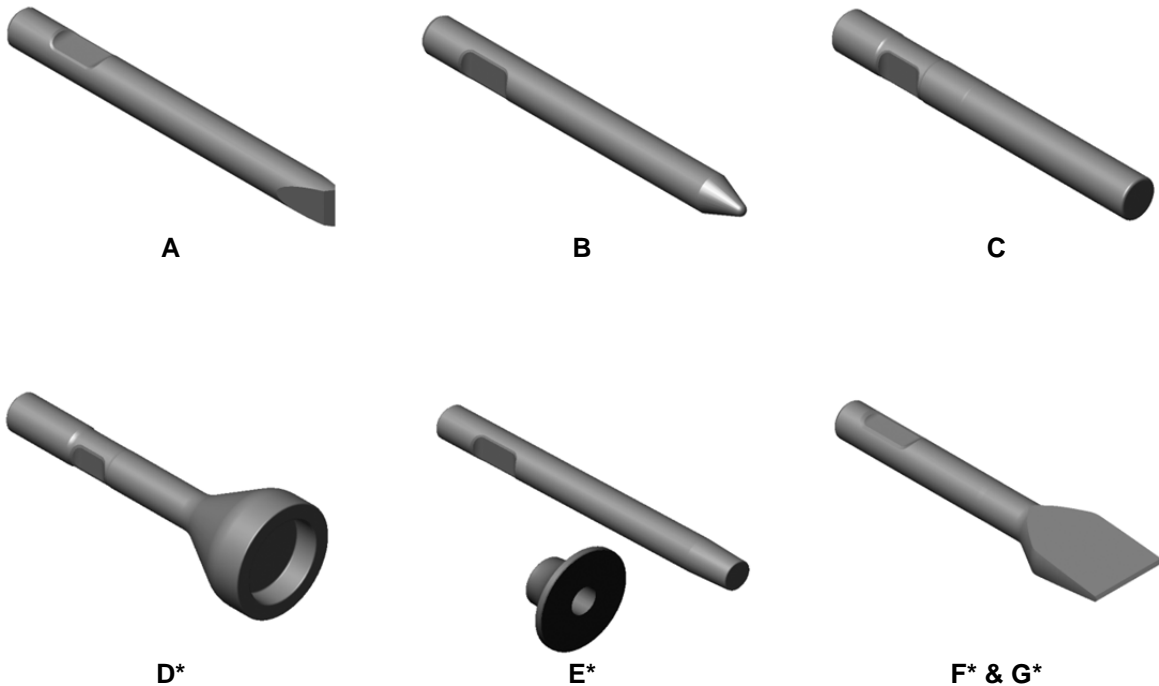
### 5.1 Standard Tools

The three most commonly used tool points for concrete and rock demolition are the Chisel, Conical and Blunt.

- A. Chisel (Wedge – Cross Cut or In-Line) –** Suitable applications include soft rock and general demolition of concrete. The tool penetrates into the material, forcing it to separate. Useful when cutting action is required, e.g. benching and trenching.

- B. Conical Point** - Same applications as the chisel. The conical tool also penetrates, but unlike the chisel, the rounded shape resists twisting that can cause burring in the tool's retainer pin area.

- C. Blunt Tool** – Designed for impact breaking. The blunt tool is effective in secondary breaking of oversize rock or boulder reduction.



**Fig. 5-1 Standard and Specialty Tools**

(\*Shown are general illustrations. Actual tool design may vary)

### 5.2 Specialty Tools\*

Specialty tools have a specific purpose or function designed into each tool. These tools can extend the versatility of a hammer, thus increasing productivity and eliminating the need for additional equipment.

\*Not available for all models.

- D. Post Driver** – For driving posts, pipes, etc.
- E. Tamper** – Designed to compact loose material.
- F. Frost Cutter** – For cutting into frozen ground.
- G. Asphalt Cutter** – Designed to cut seams in asphalt for removal. Useful when removing asphalt to dig a trench. Available in Cross-Cut and In-Line configurations.

## 5.0 Tool Selection Guide

**Table 5.1 Standard & Specialty Tools**

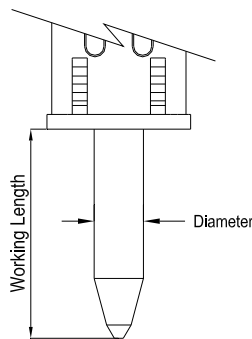
Item	Description	Part No.	TD <sup>3)</sup> x WL <sup>4)</sup> in. [mm]	Weight – lbs. [kg]
62-B	Conical Point	576380	8.07 [205] x 31 [787]	845 [383]
<b>63-A<sup>1</sup></b>	<b>Chisel Cross Cut</b>	<b>576374</b>	8.07 [205] x 31 [787]	<b>871 [395]</b>
---	Chisel In-Line	--- <sup>2</sup>	---	---
64-C	Blunt End	576381	8.07 [205] x 29 [737]	884 [400]
65	Pyramid (Not Pictured)	--- <sup>2</sup>	8.07 [205] x 31 [787]	817 [370]

<sup>1)</sup> Standard tool supplied with breaker

<sup>2)</sup> For availability of tool types not listed, contact Allied

<sup>3)</sup> TD - Tool Diameter

<sup>4)</sup> WL - Working Length



**Fig. 5-2 Tool Diameter & Working Length**

### 5.3 Allied Chisel Paste

A key element in improving the wear resistance of the bushing and tool is through the regular use of a high-quality lubricant. Allied Chisel Paste performs exceptionally well in this application because it's a "specialty" lubricant, formulated for use in heavy loaded reciprocating motion and high heat applications. Allied Chisel Paste is a unique blend of liquid and solid lubricants.

Solid lubricants, which include particles of molybdenum, copper and graphite, form a highly effective structure that resists being squeezed out during periods of heavy loading.

"General Purpose" grease typically contains little or no solid lubricants. That means once the liquid lubricant is squeezed out, there is a loss of lubrication between the bushing and tool. The result is metal-to-metal contact, which quickly leads to friction related wear and damage.

### Packaging & Ordering Information

**Table 5.2 Chisel Paste**

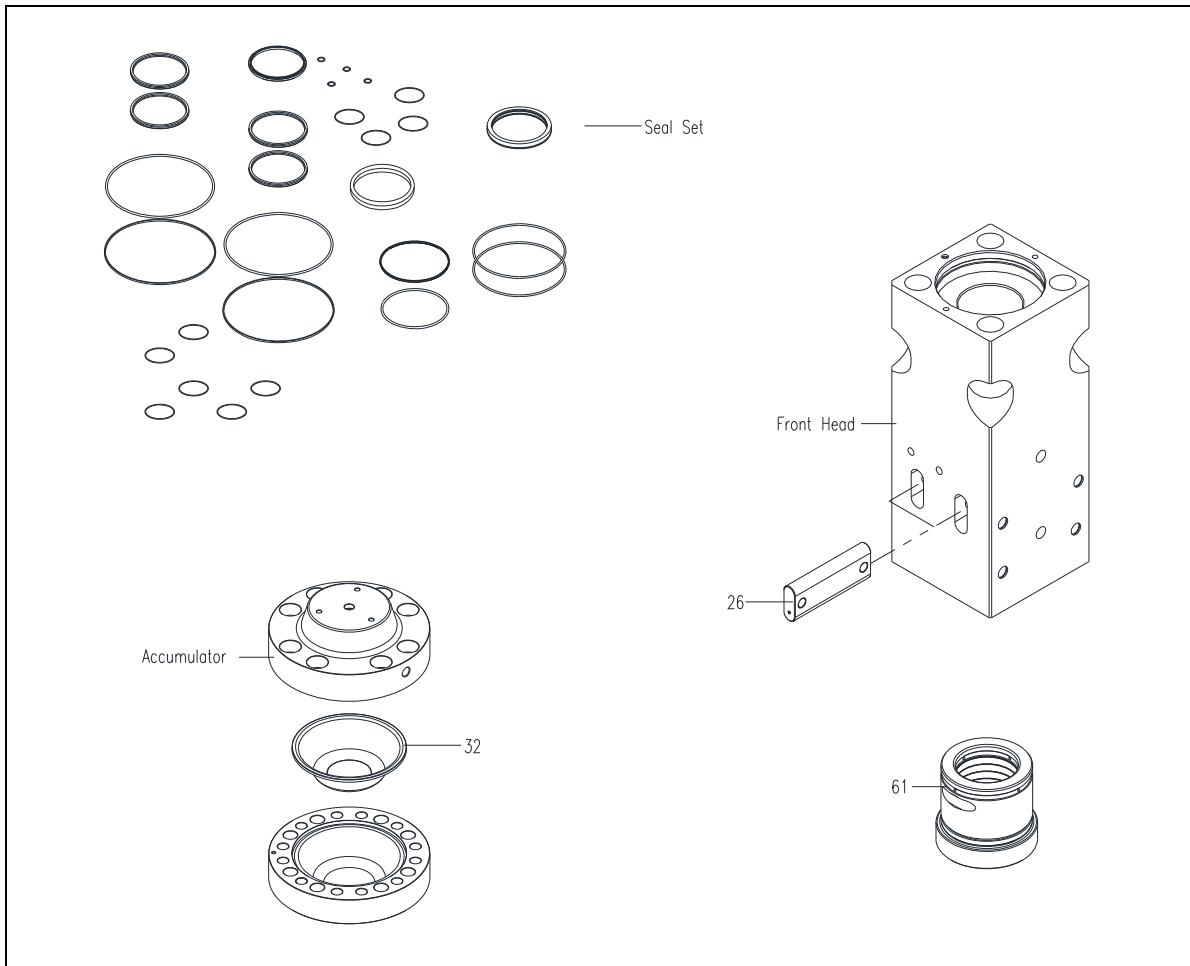
Container	Packaging	Part No.
14.5 oz. Cartridge*	Qty x 10	574430
14.5 oz. Cartridge*	Qty x 30	574431
35 lbs. Bucket	Qty x 1	676698
120 lbs. Drum	Qty x 1	679968

\*Cartridge fits standard hand-type grease gun

## 6.0 Service Kits and Tools

### 6.1 Tune-up Kit

Tune-up kits restore performance and maintain the reliability of the breaker by replacing common wear items. The Tune-up kit includes a full set of seals, accumulator membrane, lower tool bushing and tool retaining pin.



**Fig. 6-1 Tune-up Kit**

**Table 6.1 Tune-up Kit**

Item	Description	Part No.	Qty	Remarks / Specifications
---	<b>Tune-up Kit</b>	<b>576392</b>	<b>1-Kit</b>	<b>Kit Includes Seal Set &amp; Items Listed</b>
---	Seal Set	576390	1	
26	Tool Retainer	B7501230	2	
32	Accumulator Membrane	B7501280	1	
61	Lower Tool Bushing	B7501310	1	

**IMPORTANT**

Lubricant provided in seal set is for side rod threads. DO NOT apply to seals!

6.0 Service Kits and Tools – [cont'd]

Fig. 6-2 Seal Set 576390 – AR205

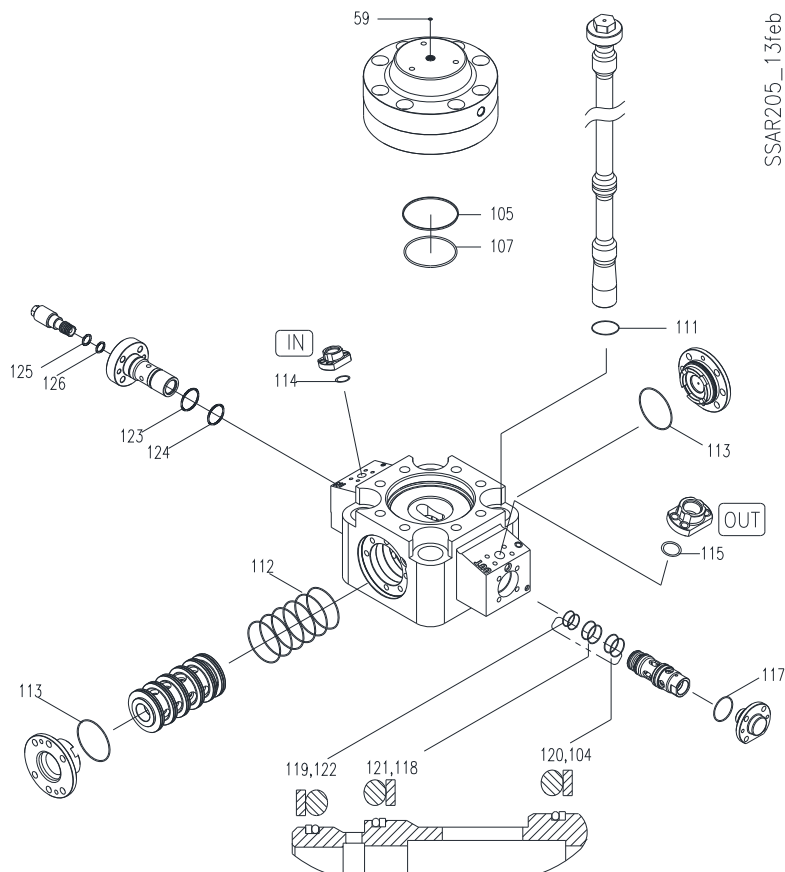


Fig. 6-2.1

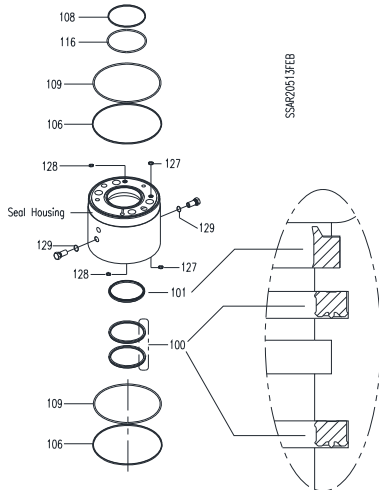


Fig. 6-2.2

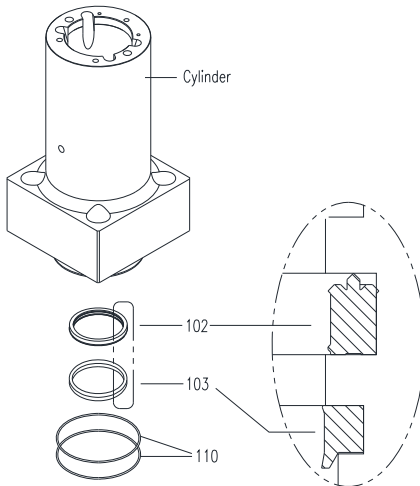


Fig. 6-2.3

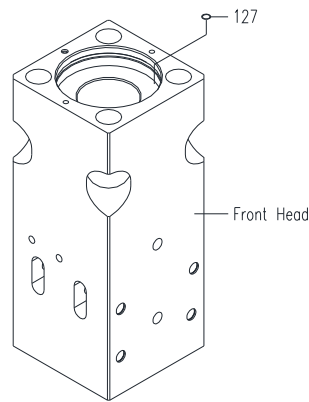


Fig. 6-2.4

Seal Positions

**6.0 Service Kits and Tools – [cont'd]****Table 6.2 Seal Set – AR205**

Pos	Description	Part No.	Qty	Remarks / Specifications
---	<b>Seal Set Complete</b>	<b>576390</b>	<b>1-Set</b>	<b>Set Includes All Items Listed</b>
59	Usit Ring	676201	1	
100	Seal	B7507100	2	
101	Wiper	B7507110	1	
102	Seal	B7507120	1	
103	Wiper	B7507130	1	
104	Backup Ring	B7507140	1	
105	Backup Ring	B7507150	1	
106	Backup Ring	B7507170	2	
107	O-Ring	B7507180	1	
108	O-Ring	B7507190	1	
109	O-Ring	B7507200	2	
110	O-Ring	B7507210	2	
111	O-Ring	B7507220	4	
112	O-Ring	B7507230	6	
113	O-Ring	B7507240	2	
114	O-Ring	657364	1	
115	O-Ring	101205	1	
116	Backup Ring	B7507280	1	
117	O-Ring	101338	1	
118	Backup Ring	571705	1	
119	Backup Ring	676205	1	
120	O-Ring	676248	1	
121	O-Ring	100107	1	
122	O-Ring	676203	1	
123	O-Ring	100109	1	
124	O-Ring	676251	1	
125	Backup Ring	B3206940	1	
126	O-Ring	676200	1	
127	O-Ring	B7507290	3	
128	O-Ring	A2507380	2	
129	O-Ring	676209	2	
---	Thread Lube 2 oz.	676927	1	Side Rod Threads -Follow application instructions



Keep seals properly stored in their original, sealed package until ready for use. Refer to Manual 575290 for proper assembly of parts.

6.0 Service Kits and Tools – [cont’d]

6.3 Accumulator N2 Gas Charge Equipment

The accumulator is a self-contained pressure vessel with a flexible membrane dividing the inner chamber. The lower chamber is used to receive, store and discharge pressurized oil. The upper chamber is filled with nitrogen gas.

The correct gas pre-charge pressure must be maintained for proper functioning and optimum service life. Filling the upper chamber with nitrogen (N2) gas is accomplished with the charging tool (Fig. 6-3) and a commercially available nitrogen bottle. Table 6.3 identifies components of the charge kit.

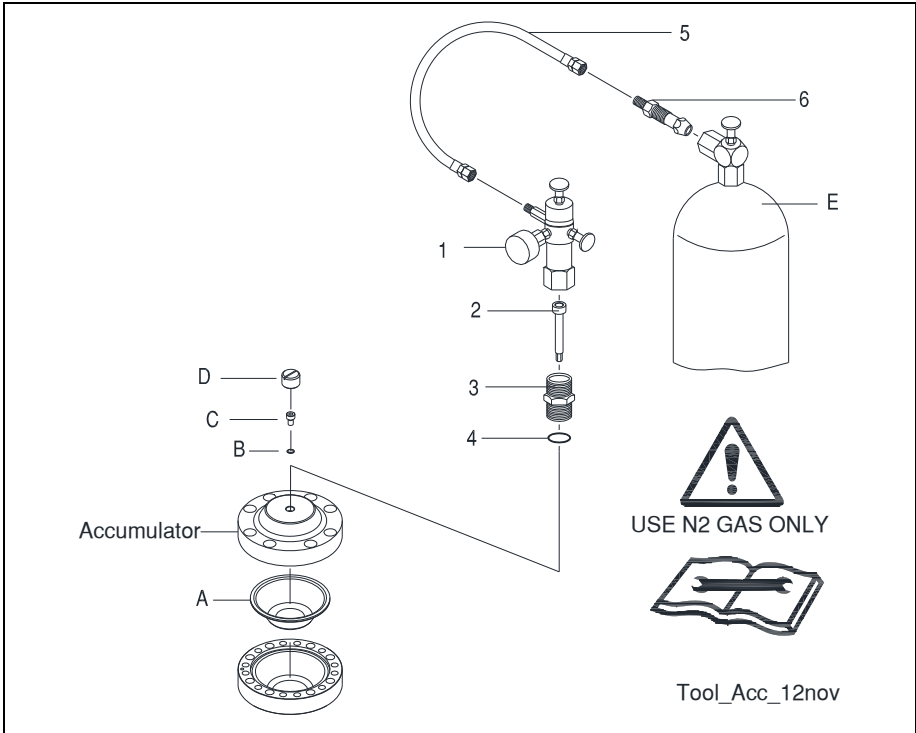




Fig. 6-3 Accumulator N2 Gas Charge Tool

Table 6.3 Accumulator N2 Gas Charge Kit

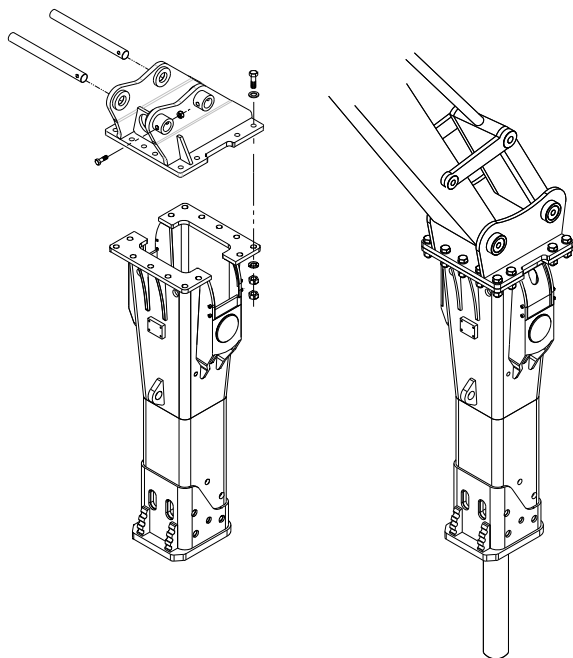
Item	Description	Part No.	Qty	Remarks / Specifications
---	<b>N2 Gas Charge Kit</b>	<b>570071</b>	<b>1-Kit</b>	<b>Kit includes 1,2,3,4,5,6</b>
1	Charge Valve with Gauge	100527	1	Includes 2-6 (& storage case - not shown)
2	Socket Bolt	40601	1	
3	Adaptor	R101635	1	
4	O-ring	901135	1	
5	Hose	N/A	1	8 Ft. [2.5 M] Not Available Separately
6	Adapter for N2 Gas Bottle	N/A	1	Not Available Separately
E	Nitrogen Gas Bottle	N/A	---	Not Available from Allied (Source Locally)
A,B,C, D,E	Membrane, U-sit ring, Bolt, Cap, N2 Gas Bottle	---	---	A,B,C,D,E Shown only for reference and are not included in charge kit.
  For safe and proper use of this tool, read, understand and follow all instructions given in Repair Manual 102706				



## 7.0 Mounting to the Carrier

### 7.1 Mounting Brackets

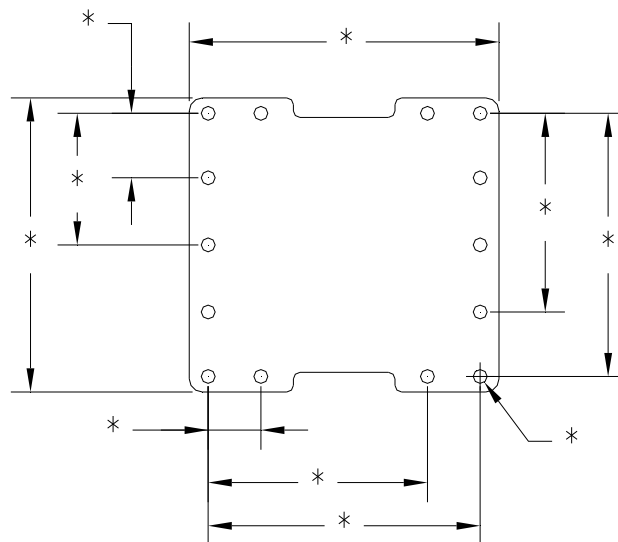
The mounting bracket (sold separately) attaches the Allied Breaker to a carrier. Allied offers an array of mounting brackets to fit virtually any carrier, including those equipped with quick mounting couplers.



**Fig. 7-1 Mounting Bracket Pin-on Type - Typical**

When ordering mounting brackets, complete information about the carrier is required including - the make, model, series and serial number. Additional information is required if the carrier is equipped with a quick coupler.

Refer to Figure 7-1. The mounting bracket is bolted to a connection plate located at the top of the box housing. The thickness of the plate, as well as other dimensions, including the quantity, diameter and spacing of the bolt holes will vary between breaker models.



**Fig. 7-2 Connection Plate Family**

In Table 7.1, AR breaker models are grouped by "Family". The mounting "Family" designates a specific connection plate used in the fabrication process of housing plates, housing box and mounting brackets. Other Allied work tools, including the Ho-Pac® utilize these same mounting Families. Dimensions for the connection plate for each family can be found in the Safety, Operation and Maintenance Manual.

**Table 7.1 Mounting Family & Hardware**

Family	Breaker Model	Bolt	FL Washer	LK Washer	Nut
BR	AR70C, A75B	90566 (12)	--- (0)	90597 (24)	91000 (12)
SR	AR85B, AR95B	572352 (10)	679422 (20)	571027 (10)	572353 (10)
MR	AR110B, AR110C, AR120B	101765 (14)	901291 (28)	658529 (14)	90507 (14)
LR8	AR130B, AR140B	101765 (14)	901291 (28)	658529 (14)	90507 (14)
LR9	AR160C, AR165, AR170C, AR175	573167 (14)	573029 (28)	573028 (14)	90519 (14)
LR10	AR180C, AR180D	576464 (14)	573029 (28)	573028 (14)	90519 (14)
AR205	AR205	576532 (14)	573029 (28)	573028 (14)	90519 (14)



Refer to the Safety, Operation and Maintenance manual for the proper tightening torque.

## 8.0 How To Order Spare Parts

Your local Allied dealer requires the Product Name, Model and Serial Number to better assist you with questions regarding parts, warranty, operation, maintenance, or repair. This information should be noted in Section 2.3 of this manual.

Product \_\_\_\_\_

Model \_\_\_\_\_

Serial No. \_\_\_\_\_

Please fill out completely

Line	Part Number	Description	Quantity	Price
1				
2				
3				
4				
5				
6				
7				
8				
9				
10				

Your contact information

Your Name	_____	Company Name	_____
Phone	_____	Account Number	_____
Fax	_____	Purchase order	_____
Email	_____	Shipping carrier	_____

\*See note below

Billing Address	_____	Shipping Address	_____
	_____		_____
	_____		_____
	_____		_____
	_____		_____

**\*Note: All backordered parts will be shipped when available via the same method as the original order unless initialed and checked below:**

Initials

- \_\_\_\_\_ ☐ Ship complete order only
- \_\_\_\_\_ ☐ Ship available parts and contact customer on disposition of backordered parts
- \_\_\_\_\_ ☐ Other – specify below

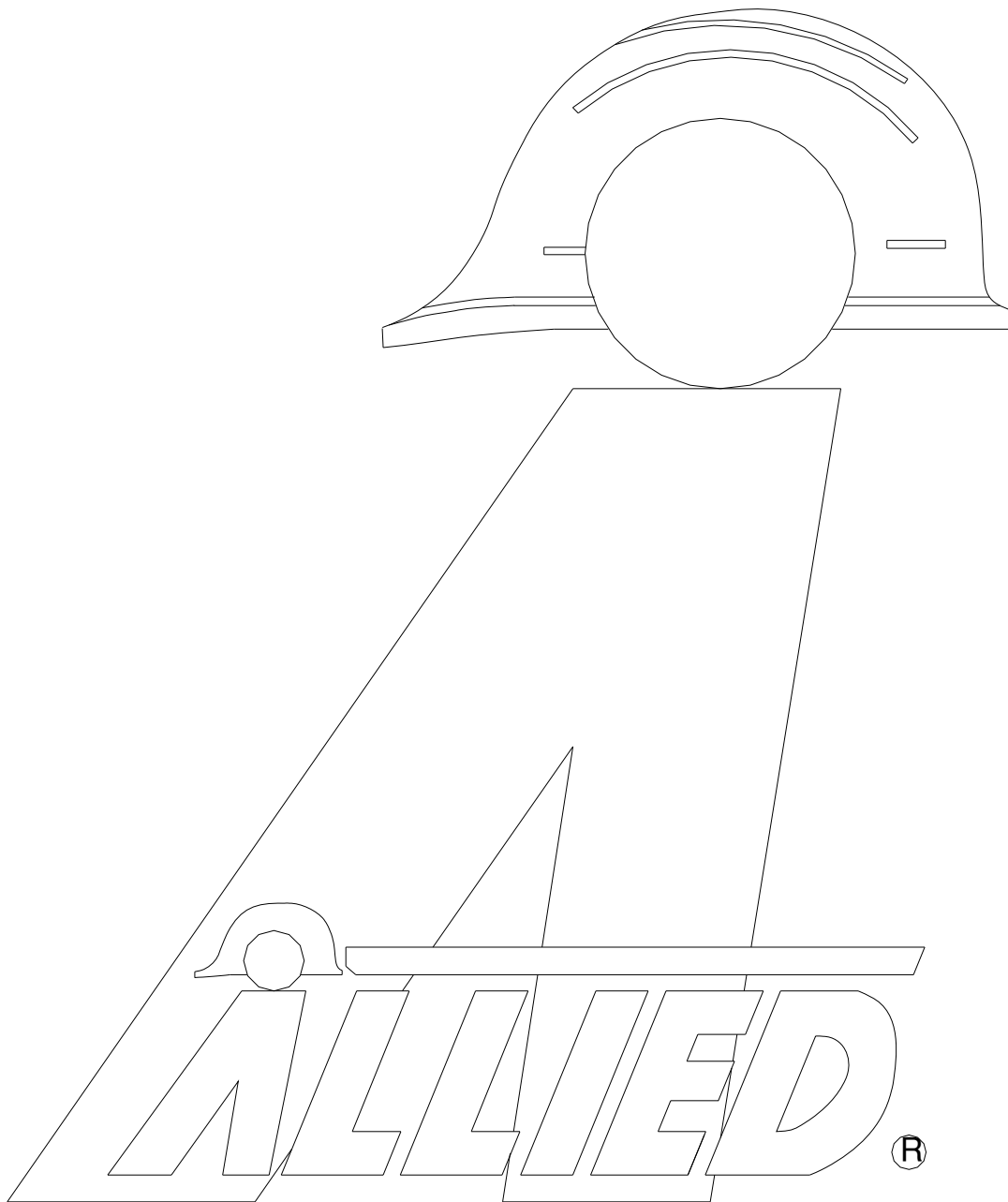
\_\_\_\_\_

\_\_\_\_\_

\_\_\_\_\_

## NOTES

[illegible]



3900 Kelley Avenue, Cleveland, Ohio 44114  
Tel: 216-431-2600 Fax: 216-431-2601  
e-mail: [Sales@AlliedCP.com](mailto:Sales@AlliedCP.com)  
website: <http://www.AlliedCP.com>