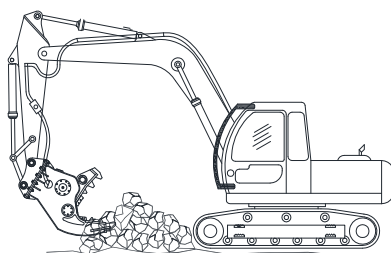


Material Processor

ASP2000 ASP3000



Parts Manual – ASP2000/3000

Keep this manual in a convenient location so that it is easily accessible for future use. Contact your Allied dealer or the Allied Customer Service department for replacement manuals. Inquiries regarding the content in this manual must include the effective date shown on the inside cover.



PM577533

Contact Information and Revision History



3900 Kelley Ave
Cleveland, Ohio 44114
Tel: 216-431-2600
www.alliedcp.com

Fax: 216-431-2601
E-mail: sales@alliedcp.com

Revision History for Document PM577533



Continuous improvement of our products is an Allied policy. The material in this publication, including figures, captions, descriptions, remarks and specifications, describe the product at the time of its printing, and may not reflect the product in the future. When changes become necessary, these will be noted in the table below. Specifications are based on published information at the time of publication. Allied Construction Products, LLC, reserves the right to change, edit, delete or modify the content of this document, including descriptions, illustrations and specifications without prior notification. For product or document updates go to www.alliedcp.com.

Table of revision history for Parts Manual 577533

<u>Effective Date</u>	<u>Page</u>	<u>Summary of Change</u>
15_Aug	9,19	Design change to cylinder guard and 2 nd guard added ASP2000 begin S/N0129.
15_Apr	7,8,17,18	Add figures and parts table for tooth and cutter kit
14_Sep	All	Original issue of 577533

Table of Contents

<u>Section</u>	<u>Page</u>
Document Revisions.....	i
Table of Contents.....	ii
List of Figures.....	ii
List of Tables.....	ii
1.0 Introduction & Scope.....	1
1.1 Purpose of This Manual.....	1
1.2 How To Order Replacement Manuals.....	1
1.3 Related Publications.....	1
2.0 Equipment Identification.....	2
2.1 Serial Number Location.....	2
2.2 Equipment Identification Label.....	2
2.3 Owner's Record of the Equipment.....	2
3.0 Safety, Identification & Information Labels.....	3
4.0 Parts List for ASP2000.....	5
5.0 Parts List for ASP3000.....	15
6.0 Parts Order Form.....	26
<u>List of Figures</u>	<u>Page</u>
2-1 Equipment Identification.....	2
2-2 Equipment Identification Label.....	2
LA Location of Labels On Equipment.....	3
LB Lubrication Points.....	4
4-1 Scope of Standard Delivery	5
4-2 Tooth Kit – ASP2000.....	7
4-3 Cutter Kit – ASP2000.....	8
4-4 Assembly Less Mounting & Hoses.....	9
4-5 Hydraulic Cylinder Assembly.....	13

<u>List of Figures – [CONT'D]</u>	<u>Page</u>
5-1 Scope of Standard Delivery – ASP3000....	15
5-2 Tooth Kit – ASP3000.....	17
5-3 Cutter Kit – ASP3000.....	18
5-3 Assembly Less Mounting & Hoses.....	19
5-4 Hydraulic Cylinder Assembly.....	23

<u>List of Tables</u>	<u>Page</u>
0.0 Table of Contents.....	ii
1.1 About This Manual.....	1
3.1 Lubrication Points.....	3
3.2 Ordering Information For Labels.....	5
4.1 Scope of Standard Delivery – ASP2000...	6
4.1.2 Options (Not Included).....	6
4.2 Tooth Kit – ASP2000.....	7
4.3 Cutter Kit – ASP2000.....	8
4.4 Assembly Less Mounting & Hoses.....	10
4.5 Hydraulic Cylinder Assembly.....	13
4.6 Seal Set for Cylinder.....	14
5.1 Scope of Standard Delivery – ASP3000...	16
5.1.2 Options (Not Included).....	16
5.2 Tooth Kit – ASP3000.....	17
5.3 Cutter Kit – ASP3000.....	18
5.4 Assembly Less Mounting & Hoses.....	20
5.5 Hydraulic Cylinder Assembly.....	24
5.6 Seal Set for Cylinder.....	24

1.0 Introduction and Scope

1.1 Purpose and Scope of This Manual

The material in this manual has been prepared in support of the product named in Table 1.1. It's intended solely for use with the expressed model(s) and may not be suitable for unnamed models.

The publication identified in Table 1.1 was created solely for information purposes and should not be considered all-inclusive. If further information is required, contact your local Allied dealer or the Allied Customer Service Department.

Parts Manuals do not include safety precautions or operating procedures. Figures depict views that are intended for parts identification and not for purposes of repair or service of the product. Figures, captions, descriptions and tables, presented in this manual, may show equipment that is optional.

How to use this Manual:

Assembly components are identified with the aid of figures, captions, item key, part name and quantity. When necessary, remarks and specifications further enhance the description of the part or clarify its use (or exclusion) with select serial numbers.

A parts order form is provided at the back of this manual.

Prior to ordering parts, confirm that the information recorded on the equipment's identification label corresponds with Table 1.1. For the location of this label, refer to Section 2.0 of this manual.

Table 1.1 About This Manual



Document ID.	PM577533
Category	Spare / Replacement Parts
Current Status	See Inside Cover
Product Name:	Material Processor
Applicable Model[s]:	ASP2000, ASP3000
Years of Manufacture:	Begin 2014
Inquiries regarding this manual must include the effective date shown on inside cover	

The content of this document has been reviewed for accuracy. Allied Construction Products, LLC has endeavored to deliver the highest degree of accuracy

possible and has made every effort to provide information as complete as possible for this document. However, continuous improvement of our products is an Allied policy. The material in this publication, including descriptions, illustrations and specifications, describes the product at the time of its printing, and may not reflect the product in the future. Changes made to the manual's content are noted on the inside cover.

1.2 How To Order Replacement Publications

This manual is an integral part of this product. Keep it in a convenient location so that it is easily accessible for future reference.

Replacement manuals may be ordered by contacting your Allied dealer service center. These manuals may also be viewed and downloaded at: www.alliedcp.com

1.3 Related Publications

Allied Construction Products, LLC offers the following publications for the product identified in Table 1.1.

Safety, Operation & Maintenance Manual 577532

For use with Models ASP2000, ASP3000

Safety, Operation & Maintenance Manuals are prepared to assist the operator and maintenance personnel with the information necessary for the safe and proper use of the Allied equipment.

Content included in the Safety, Operation & Maintenance Manual:

- Safety Information
- Equipment Identification
- Technical Data (Weight & dimensions)
- Installation and Set-up
- Pre-Operation Inspection
- How to Operate the Equipment
- Maintenance Schedule
- Lubrication
- Cutting Blades – Inspection / Changing
- Basic Troubleshooting Guidelines
- Transporting, Removal, Lifting, & Storage

2.0 Equipment Identification

2.1 Serial Number Location

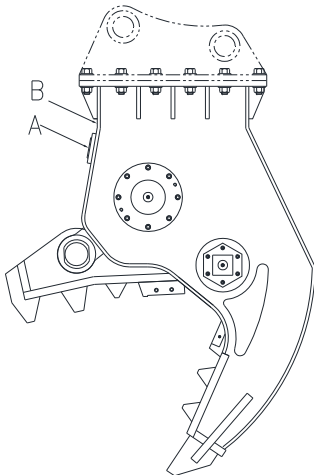


Fig 2-1 Equipment Identification

Refer to Figure 2-1. The Serial Number assigned to this equipment is found in the following locations:

- A. The Equipment Identification Label
- B. Stamped above the ID Label

2.2 Equipment Identification Tag

ALLIED		3900 Kelley Avenue Cleveland OH 44114 USA		CE							
MODEL NUMBER	MP xxxxxx	SERIAL NUMBER	xxxxxx								
YEAR	20XX	WEIGHT LBS.	xxxxxx								
<table border="1"> <tr> <td colspan="2">OPEN / CLOSE</td> </tr> <tr> <td>FLOW (GPM)</td> <td>xxx</td> </tr> <tr> <td>PRESSURE (PSI)</td> <td>xxxx</td> </tr> </table>						OPEN / CLOSE		FLOW (GPM)	xxx	PRESSURE (PSI)	xxxx
OPEN / CLOSE											
FLOW (GPM)	xxx										
PRESSURE (PSI)	xxxx										
www.alliedcp.com				xxxxxx							

Fig 2-2 Equipment Identification Label

The Equipment Identification Tag is affixed to the housing. It provides the following information:

- Manufacturer's name
- Address
- Product name
- Model number
- Serial number
- Year of manufacture

- Weight

Confirm that the information contained on the Tag corresponds with the information provided in Section 1, Table 1.1.

2.3 Owner's Record of the Equipment

Your local Allied dealer requires complete information about the equipment to better assist you with questions regarding parts, warranty, operation, maintenance, or repair.

- Record the equipment's serial number to the space provided below. This information may be obtained from the Equipment Identification Tag. Refer to Fig 2-1 for the location of the tag.
- Indicate the date in which the Allied equipment was placed into service.
- Indicate the date in which the Warranty Registration form was completed and returned to Allied.

Product Name: Material Processor

Series: ASP

Model / Part No. ASP2000 / 577442

Model / Part No. ASP3000 / 577462

Serial Number: _____

In Service Date: _____

Registration Date: _____

Model ASP2000 / ASP3000

A	Allied
S	Secondary
P	Processor

3.0 Safety, Identification and Information Labels

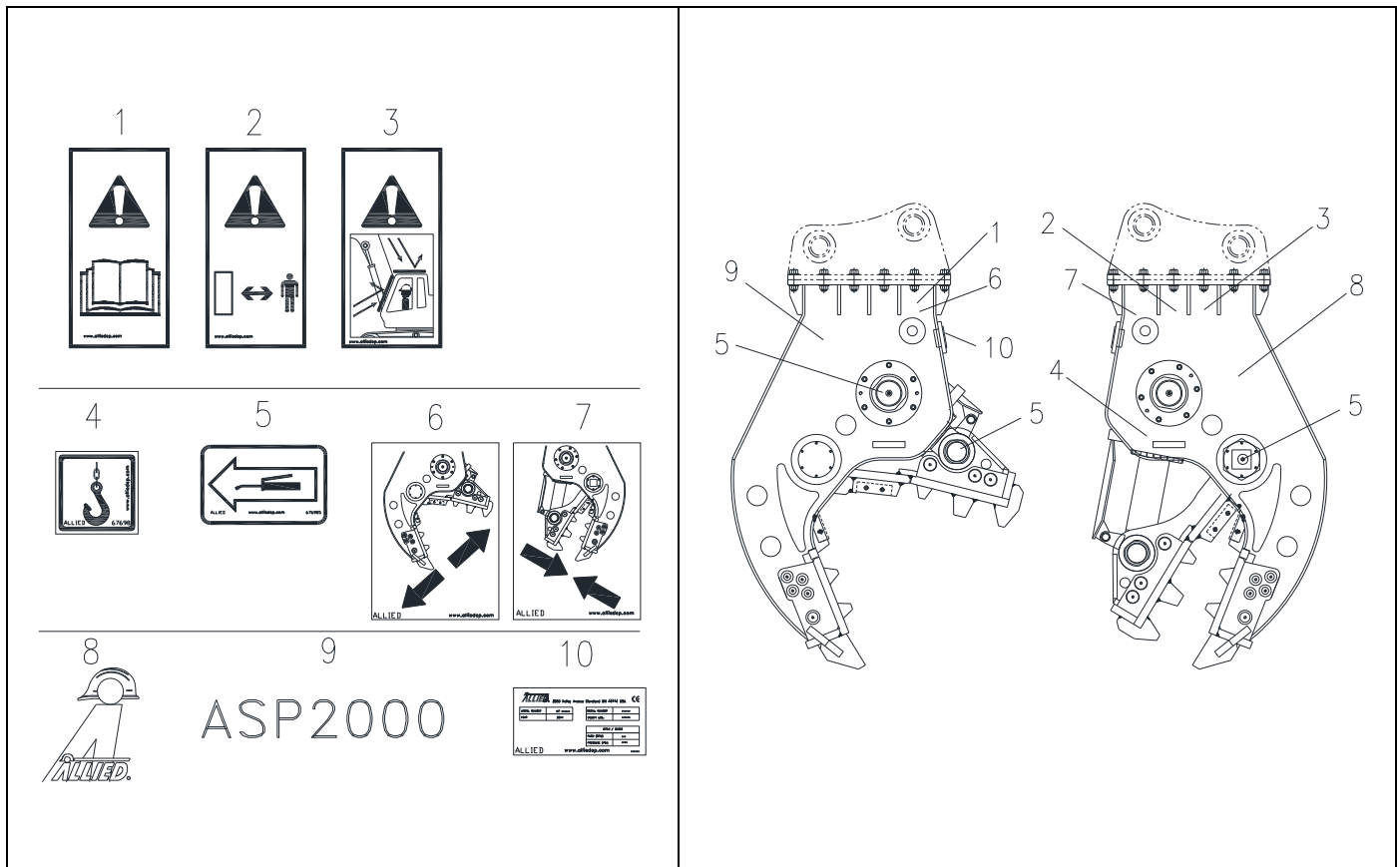


Fig. L-A Label Position

3.1 Safety, Identification and Information Labels

Information labels affixed to the Allied equipment include safety warnings, identification and instructions important to operation and service. Words and illustrations must be readable. Keep all safety labels clean. Replace damaged or missing labels before operating this equipment. Refer to Table 3.2 for ordering information. Refer to Figures "L-A" and "L-B" for their position on the equipment.

1. Safety Alert Symbol / Read the Manual - Directs personnel to the manual for safety-related precautions and further instructions regarding operation and maintenance procedures.

2. Stay Clear – Alerts personnel and by-standers to maintain a safe distance from the work tool during operation.

3. Flying Debris – Alerts of the need for a protective guard to shield the operator from debris generated when the work tool is in operation.

4. Lift Point – Marks lift points for safe handling of the work tool.

5. Lubrication Point – Pictogram of instruction manual and grease gun is used to identify lubrication points. Read the manual(s) for application instructions, grease type and re-lubrication schedule.

6 & 7. Hydraulic Connections - Oil flow to Cylinder Barrel [CB] port => JAW CLOSE. Oil flow to Cylinder Rod [CR] port => JAW OPEN.

8. ALLIED Logo – The Allied brand identifier and is a registered trademark of Allied Construction Products, LLC.

9. Model Identification – Identifies the Model of the Allied work tool

10. Equipment Identification - Contains identifying information about the Allied equipment, including: Product name, model number, serial number, company name and address.

3.0 Safety, Identification and Information Labels

Table 3.1 Lubrication Points

<u>Pos</u>	<u>Part Name</u>	<u>Qty</u>
5A	Jaw Pin	1
5B	Cylinder Pin (Rod Eye)	1
5C	Cylinder Pin (Trunnion)	2

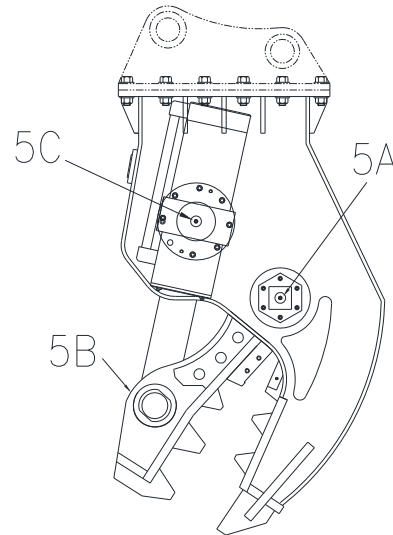
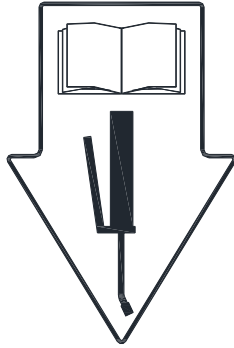


Fig. L-B Lubrication Points Identified

Table 3.2 Safety, Identification & Information Labels

<u>Pos</u>	<u>Type</u>	<u>Part No.</u>	<u>Description / Specification</u>	<u>Qty</u>	<u>Note</u>
---	Label Set	577529	ASP2000 Includes Items 1-8	1	
---	Label Set	577529	ASP3000 Includes Items 1-8	1	
1	Safety	676984	Pictogram, Read Instructions	2	2
2	Safety	840156	Pictogram, Stay Clear	2	2
3	Safety	575948	Pictogram, Guards Installed	2	2
4	Safety	676982	Pictogram, Lift Point	2	2
5	Service	676985	Pictogram, Lubrication Point	4	3
6	Eq. ID	577433	(CR) Cylinder Rod => Jaw Open	1	
7	Eq. ID	577432	(CB) Cylinder Barrel => Jaw Close	1	
8	Eq. ID	676656	Allied Logo	2	2
9.1	Eq. ID	577531	Model ASP2000	2	1, 2
9.2	Eq. ID	577534	Model ASP3000	2	1, 2
10	Eq. ID	845001	Equipment Identification	1	1

Note 1: Not included in label set

Note 2: Display 1 each on LH & RH side

Note 3: See Figure L-B for view of lubrication points

4.0 Parts List – ASP2000

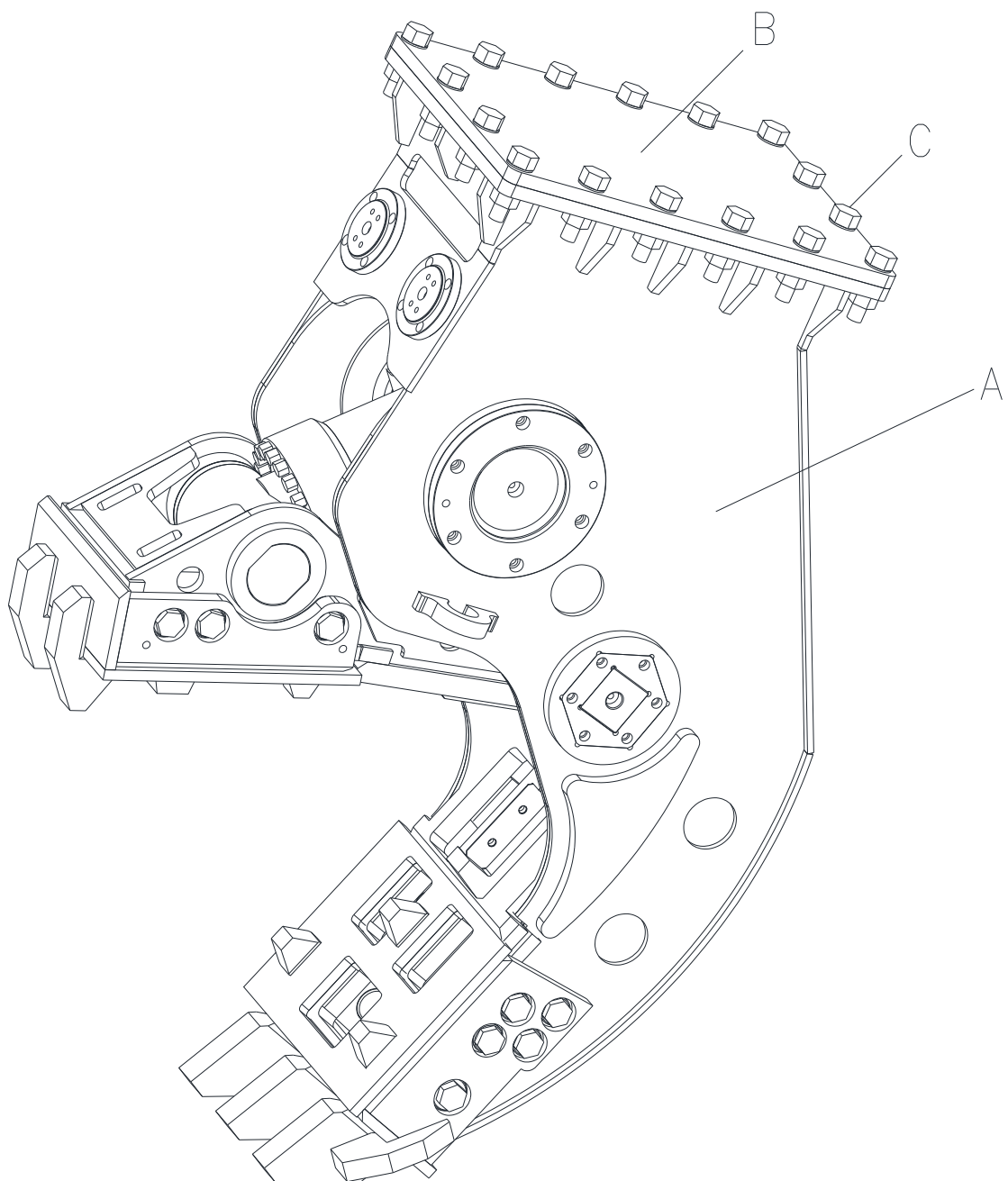


Fig. 4-1 ASP2000 - Scope of Standard Delivery

4.0 Parts List – ASP2000**Table 4.1 Scope of Standard Delivery**

<u>Pos</u>	<u>Name</u>	<u>Part No.</u>	<u>Description / Specification</u>	<u>Qty</u>	<u>Note</u>
A	ASP2000	577442	<i>Model ASP2000 Includes Items B-F</i>	1	ENG14H14
B	Adapter	577480	LR8 x OEM	1	
C	Bolt Set	104494	LR8 side of adapter	1	
D	Manual	PM577533	Parts List	1	
E	Manual	SOM577532	Safety, Operation & Maintenance	1	
F	Warranty Policy	570519		1	

Table 4.1.2 Option (Not Included – Order Separately)

<u>Pos</u>	<u>Part Name</u>	<u>Part No.</u>	<u>Description / Specification</u>	<u>Qty</u>	<u>Note</u>
---	Mounting Bracket	Varies	Carrier MFR, MDL, SER, S/N	---	1 - Opt.
---	Hydraulic Hose	Varies	Jaw Open Length = X End A = / End B =	---	1 - Opt.
---	Hydraulic Hose	Varies	Jaw Close Length = X, End A = / End B =	---	1 - Opt.

1. Option Varies - Additional information is required

4.1 Parts List – ASP2000

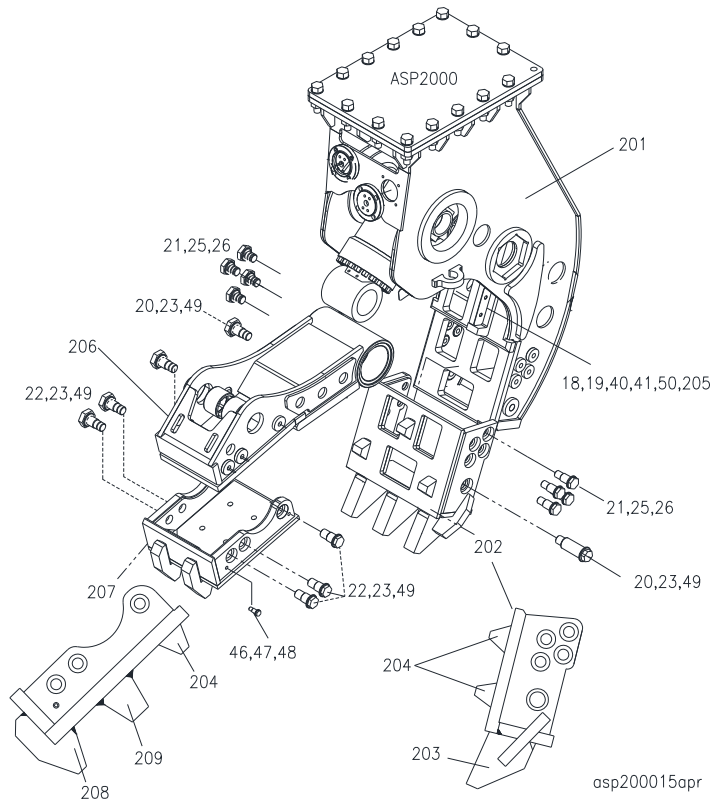


Fig. 4-2 Tooth Kit

Table 4.2 Tooth Kit – ASP2000

Pos	Part Name	Part No.	Description / Specification	Qty	Note
---	Tooth Kit	577474	Includes W.A. Not Individual Teeth	1	2
20	Pin	P2035000	50 mm	2	
21	Pin	P2036000	35 mm	8	
22	Pin	P2037000	40 mm	6	
23	Flat Washer	90521	M36	8	
25	Lock washer	658560	M30	8	
26	Hex Nut	91001	M30	8	
49	Lock Nut	577567	M36	8	
202	Tooth W.A. Lower	P2033000	Weldment Assembly With Teeth	1	2
203	Tooth, Lower Front	P2033040	Installed On W.A.	3	2
204	Tooth, Mid	P2011240	Installed On W.A.	3	2
205	Tooth, Lower Rear	P2011250	Shown For Reference Only	2	Not Incl'd
207	Tooth W.A. Upper	P2034000	Weldment Assembly With Teeth	1	2
204	Tooth, Mid	P2011240	Installed On W.A.	2	2
208	Tooth, Upper Front	P2012020	Installed On W.A.	2	2
209	Tooth, Upper Mid	P2012030	Installed On W.A.	1	2

Note 2. Lower and Upper Weldment Assemblies With Front, Mid and Rear Teeth Installed

4.1 Parts List – ASP2000

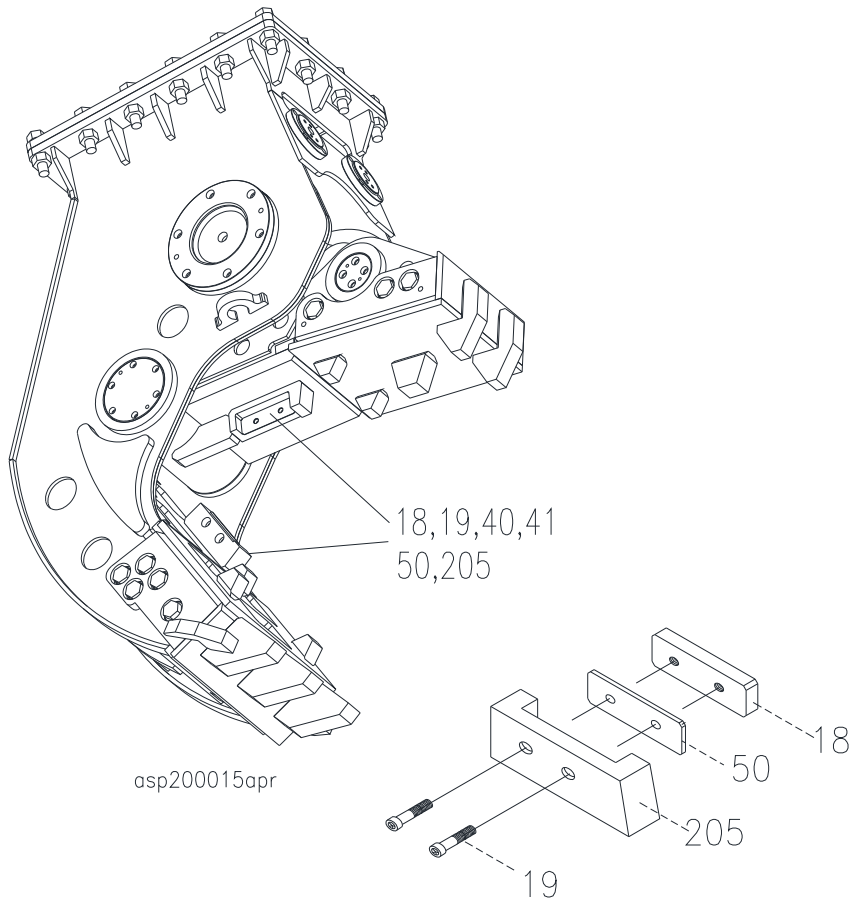


Fig 4-3 Cutter Kit

Table 4.3 Cutter Kit – ASP2000

<u>Pos</u>	<u>Part Name</u>	<u>Part No.</u>	<u>Description / Specification</u>	<u>Qty</u>	<u>Note</u>
---	Cutter Kit	577558	Cutter Kit Includes Note 3	1	
18	Cutter	P2014120		2	3
19	Socket Flat Head Bolt	577468	M12-1.75 x 60	4	3
40	Lock washer	840235	M12	4	3
41	Lock Nut	91019	M12	4	3
50	Shim Plate	P2014180		2	3
205	Tooth, Lower Rear	P2011250	Not Included. Shown Only For Reference. See Tooth Kit	---	---

3. Included in Cutter Kit

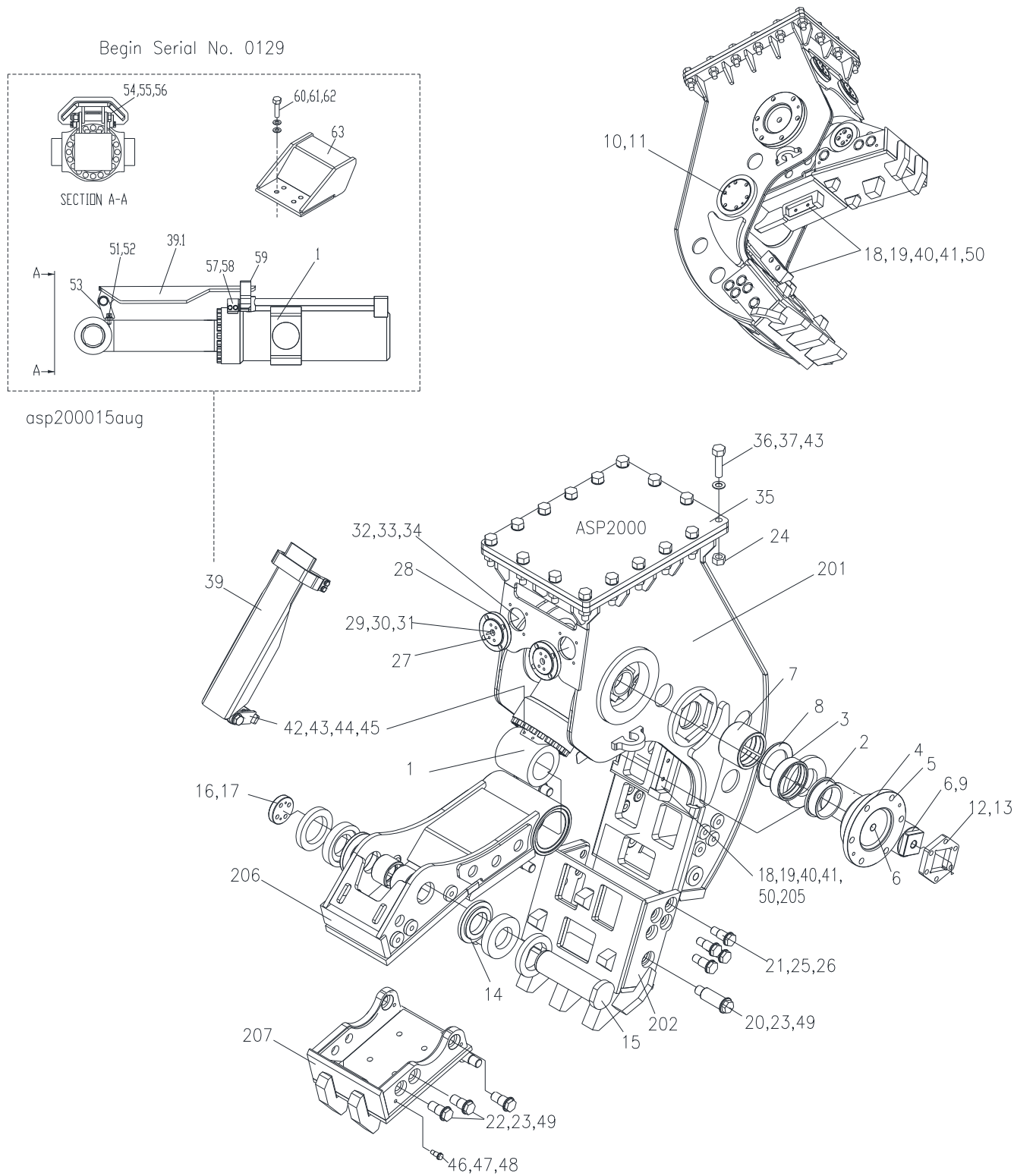
4.1 Parts List – ASP2000**Table 4.4 ASP2000 Assembly – Less Mounting & Hoses**

Pos	Part Name	Part No.	Description / Specification	Qty	Note
1	Cylinder Assembly	P2013000		1	
2	Bushing, Cylinder Hinge	P2014010		2	
3	Bushing, Hinge (L)	P2014020		2	
4	Cover, Cylinder Hinge	P2014030		2	
5	Socket Head Bolt	577383	M16-2.00 x 60	12	
6	Grease Nipple	90200		3	
7	Bushing, Hinge (2)	P2014040		2	
8	Ring, Hinge (2)	P2014050		2	
9	Shaft, Hinge (L)	P2014060		1	
10	Cover, Hinge (L)	P2014070		1	
11	Socket Head Bolt	90564	M12-1.75 x 40	6	
12	Flange, Hex	P2014080		1	
13	Socket Head Bolt	90564	M12-1.75 x 40	6	
14	Ring, Hinge (1)	P2014090		2	
15	Shaft, Hinge (2)	P2014100		1	
16	Cover, Hinge (2)	P2014110		1	
17	Socket Head Bolt	719733	M10-1.50 x 40	4	
18	Cutter	P2014120		2	3
19	Socket Flat Head Bolt	577468	M12-1.75 x 60	4	3
20	Pin	P2035000	50 mm	2	
21	Pin	P2036000	35 mm	8	
22	Pin	P2037000	40 mm	6	
23	Flat Washer	90521	M36	8	
24	Lock Nut	90507	M24	16	
25	Lock washer	658560	M30	8	
26	Hex Nut	91001	M30	8	
27	Flange	P2014130	1"	2	
28	Socket Head Bolt	575816	M12	8	
29	Flange	A101582	1"	2	
30	O-Ring	677977		2	
31	Elbow 45	TF1111045		2	
32	Hose Assembly	P2014130	PF 1"X1550L	2	
33	Connector	PF1111100	PF 1"	4	
34	O-Ring	676204		4	
35	Plate / Mounting Bracket	---	Optional – Not Included	---	

Note: 2. Included in Tooth Kit

3. Included in Cutter Kit

4.1 Parts List – ASP2000



4.1 Parts List – ASP2000**Table 4.4 [cont'd] ASP2000 Assembly (Less Mounting & Hoses)**

<u>Pos</u>	<u>Part Name</u>	<u>Part No.</u>	<u>Description / Specification</u>	<u>Qty</u>	<u>Note</u>
36	Hex Head Bolt	90589	M24-3.00 x 110	16	
37	Lock washer	658529	M24	16	
---	---	---		---	
39	Cylinder Rod Cover	P2015000		1	
39.1		P21A5100			5
40	Lock washer	840235	M12	4	3
41	Lock Nut	91019	M12	4	3
42	Hex Head Bolt	577562	M24-3.00 x 180	1	
43	Flat Washer	901291	M24	18	
44	Lock washer	658529	M24	1	
45	Lock Nut	90507	M24	1	
46	Hex Head Bolt	575840	M16-2.00 x 25	8	
47	Lock washer	056245	M16	8	
48	Flat Washer	667236	M16	8	
49	Lock Nut	577567	M36	8	
50	Shim Plate	P2014180		2	3
51	SH Bolt	578227	M16-2.0 x 35	2	5
52	LK Washer	056245	M16	2	5
53	Bracket Assy	P2015030		1	5
54	HH Bolt	577562	M24-3.00 x 180	1	5
55	FL Washer	901291	M24	2	5
56	Nut	90507	M24		5
57	SH Bolt	90522	M12-1.75 X 40	4	5
58	LK Washer	840235	M12	4	5
59	Bracket	P21A5200		1	5
60	SH Bolt	578228	M20-2.50 x 50	4	5
61	LK Washer	100088	M20	4	5
62	FL Washer	667628	M20	4	5
63	Guard	P21A600		1	5
201	Body Assembly	P20A1000		1	
202	Tooth W.A. Lower	P2033000	Weldment Assembly With Teeth	1	2
205	Tooth, Lower Rear	P2011250			
206	Arm Assembly	P2032000		1	
207	Tooth W.A. Upper	P2034000	Weldment Assembly With Teeth	1	2

Note: 2. Included in Tooth Kit

Note: 3. Included in Cutter Kit

Note: 5 Begin Serial No. 0129

4.1 Parts List – ASP2000

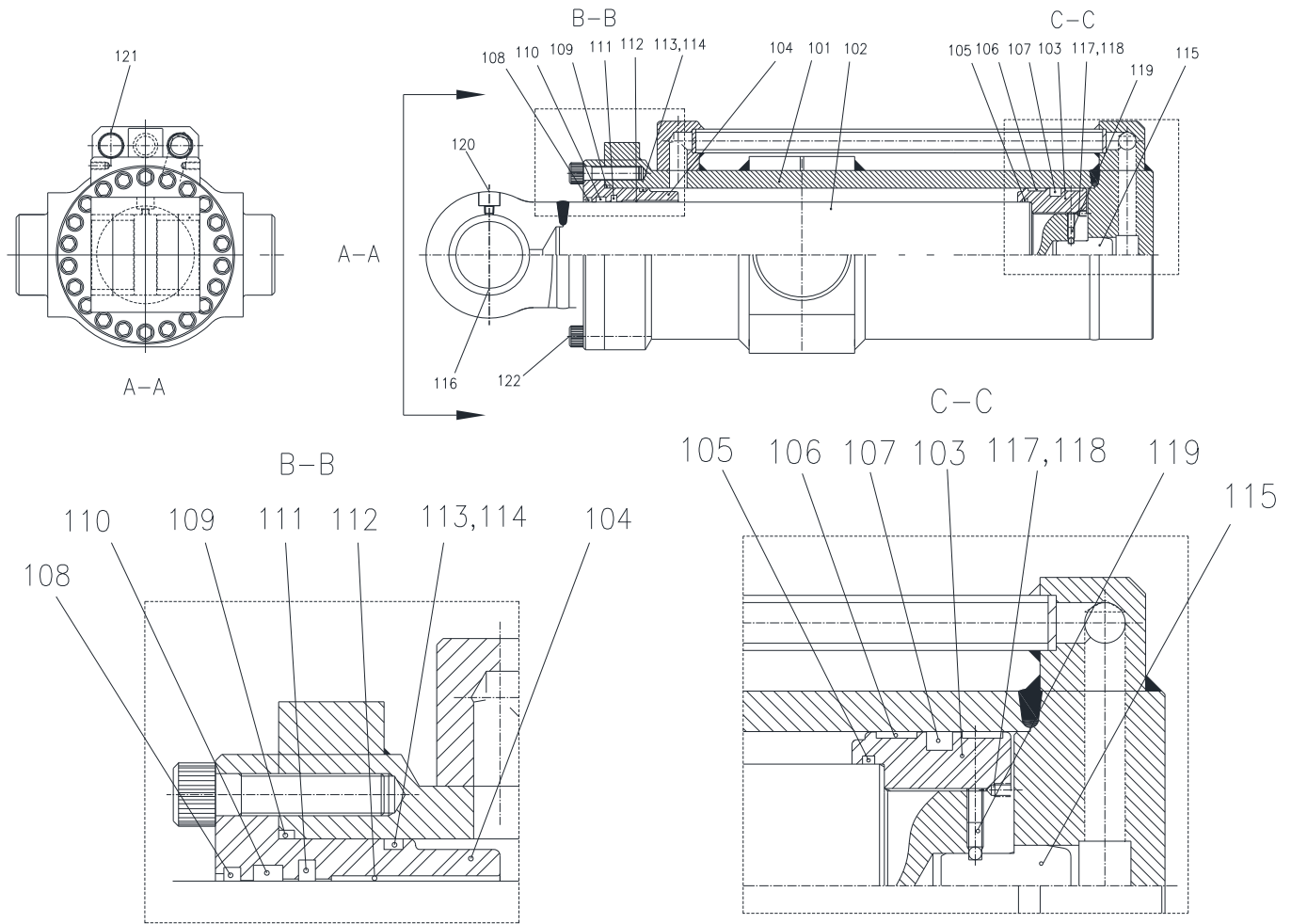


Fig. 4-5 Hydraulic Cylinder Assembly

Table 4.5 Hydraulic Cylinder Assembly – ASP2000

Pos	Part Name	Part No.	Description / Specification	Qty	Note
1	Cylinder Assembly	P2013000		1	
101	Tube Assembly	P2013010		1	
102	Rod Assembly	P2013020		1	
103	Piston	P2013030		1	
104	Rod Cover	P2013040		1	
105	O-Ring	P2013150		1	4
106	Wear Ring	P2013160		2	4
107	Piston Seal	P2013170		1	4

Note: 4. Included in Seal Set

4.1 Parts List – ASP2000**Table 4.5 [cont'd] Hydraulic Cylinder Assembly – ASP2000**

<u>Pos</u>	<u>Part Name</u>	<u>Part No.</u>	<u>Description / Specification</u>	<u>Qty</u>	<u>Note</u>
108	Dust Seal	P2013180		1	4
109	O-Ring	P2013190		1	4
110	Rod Seal	P2013100		1	4
111	Step Seal (OMS-MR)	P2013110		1	4
112	DU Bush	P2013120		1	
113	O-Ring	P2013130		1	4
114	Back Up Ring	P2013140		1	4
115	Cushion Plunger	P2013150		1	
116	Steel Bush	P2013160		2	
117	Set Screw	P2013170		1	
118	Steel Ball	P2013180		15	
119	Set Screw	P2013190		1	
120	Grease Nipple	P2013200		1	
121	Dust Cap	P2013220		2	
122	Wrench Bolt	P2013230		20	

Note: 4. Included in Seal Set

Table 4.6 Seal Set for Cylinder

<u>Pos</u>	<u>Part Name</u>	<u>Part No.</u>	<u>Description</u>	<u>Qty</u>	<u>Note</u>
---	Seal Set	P2017000	Seal Set Includes the following	1-Set	
105	O-Ring	P2013150		1	4
106	Wear Ring	P2013160		2	4
107	Piston Seal	P2013170		1	4
108	Dust Seal	P2013180		1	4
109	O-Ring	P2013190		1	4
110	Rod Seal	P2013100		1	4
111	Step Seal (OMS-MR)	P2013110		1	4
113	O-Ring	P2013130		1	4
114	Back Up Ring	P2013140		1	4

Note: 4. Included in Seal Set

5.0 Parts List – ASP3000

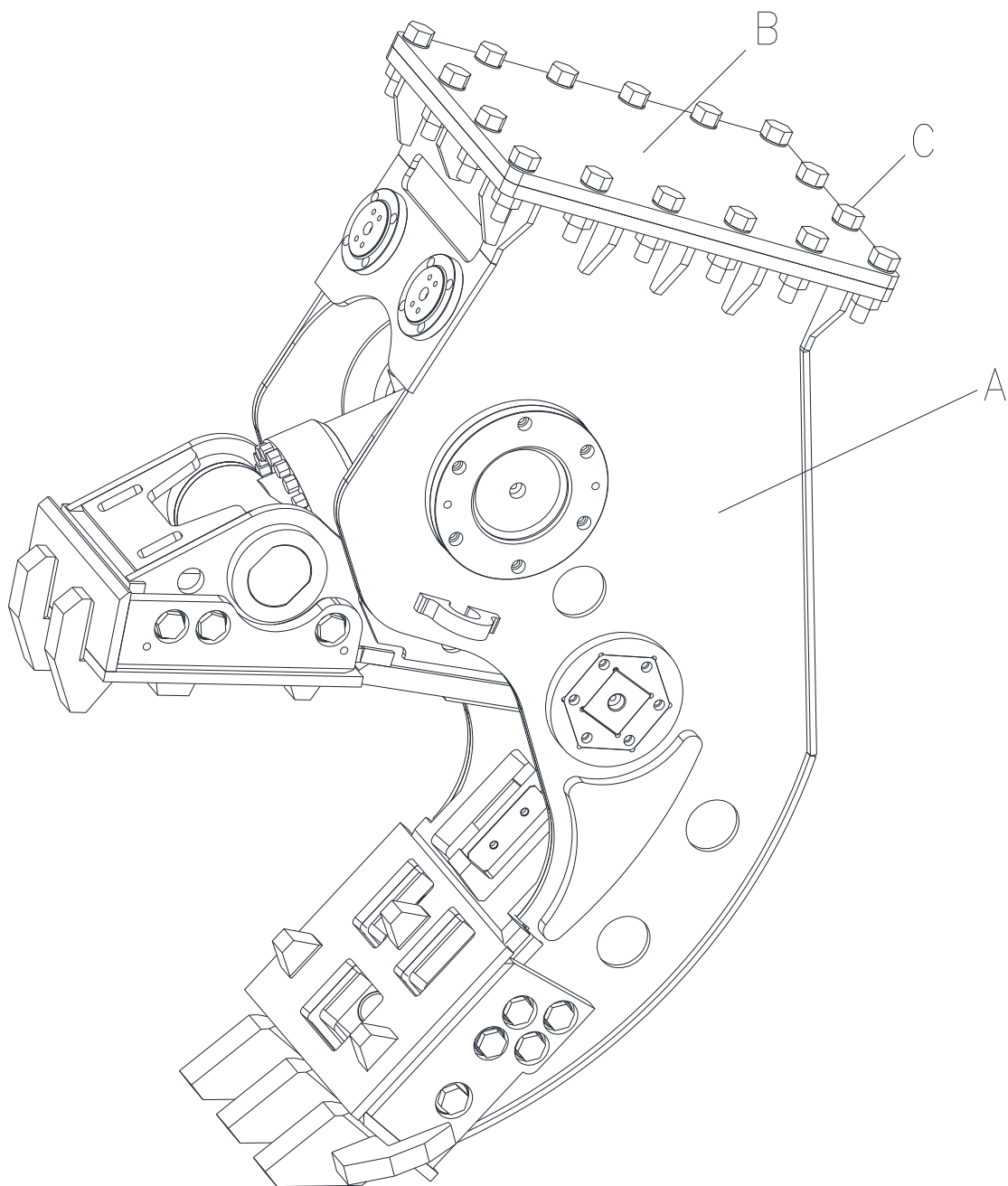


Fig. 5-1 ASP3000 - Scope of Standard Delivery

5.0 Parts List – ASP3000

Table 5.1 Scope of Standard Delivery

<u>Pos</u>	<u>Part Name</u>	<u>Part No.</u>	<u>Description / Specification</u>	<u>Qty</u>	<u>Note</u>
A	ASP3000	577462	<i>Model ASP3000 Includes Items B-F</i>	1	ENG14H14
B	Adapter	577481	LR9 x OEM	1	
C	Bolt Set	84G100	LR9 side of adapter	1	
D	Manual	PM577533	Parts List	1	
E	Manual	SOM577532	Safety, Operation & Maintenance	1	
F	Warranty Policy	570519		1	

Table 5.1.2 Optional (Not Included – Order Separately)

<u>Pos</u>	<u>Part Name</u>	<u>Part No.</u>	<u>Description / Specification</u>	<u>Qty</u>	<u>Note</u>
---	Mounting Bracket	Varies	Carrier MFR, MDL, SER, S/N	---	1 - Opt.
---	Hydraulic Hose	Varies	Jaw Open Length = X End A = / End B =	---	1 - Opt.
---	Hydraulic Hose	Varies	Jaw Close Length = X, End A = / End B =	---	1 - Opt.

Note: 1. Option Varies - Additional information is required

5.0 Parts List – ASP3000

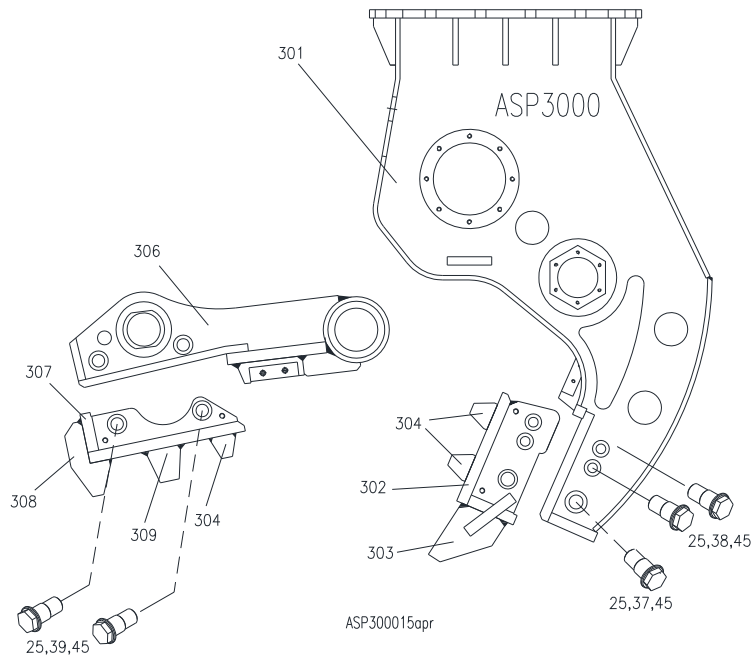


Fig. 5-2 ASP3000 Tooth Kit

Table 5.2 Tooth Kit – ASP3000

<u>Pos</u>	<u>Part Name</u>	<u>Part No.</u>	<u>Description / Specification</u>	<u>Qty</u>	<u>Note</u>
---	Tooth Kit	577476	Includes W.A. Not Individual Teeth		
25	Washer, Flat	90521	M36	10	
37	Pin	P3025000		2	
38	Pin	P3026000		4	
39	Pin	P3027000		4	
45	Lock Nut	577567	M36-4.0	10	
302	Tooth W.A Lower	P3023000	Weldment Assembly With Teeth	1	2
303	Tooth, Front	P3023040		3	2
304	Tooth	P3011240		3	2
305	Tooth	P2011250	Not Included In Toothy Kit	2	
307	Tooth W.A. Upper	P3024000	Weldment Assembly With Teeth	1	2
304	Tooth	P3011240		2	2
308	Tooth	P3012020		2	2
309	Tooth	P3012030		1	2

Note: 2. Lower and Upper Weldment Assemblies With Front, Mid and Rear Teeth Installed

5.0 Parts List – ASP3000

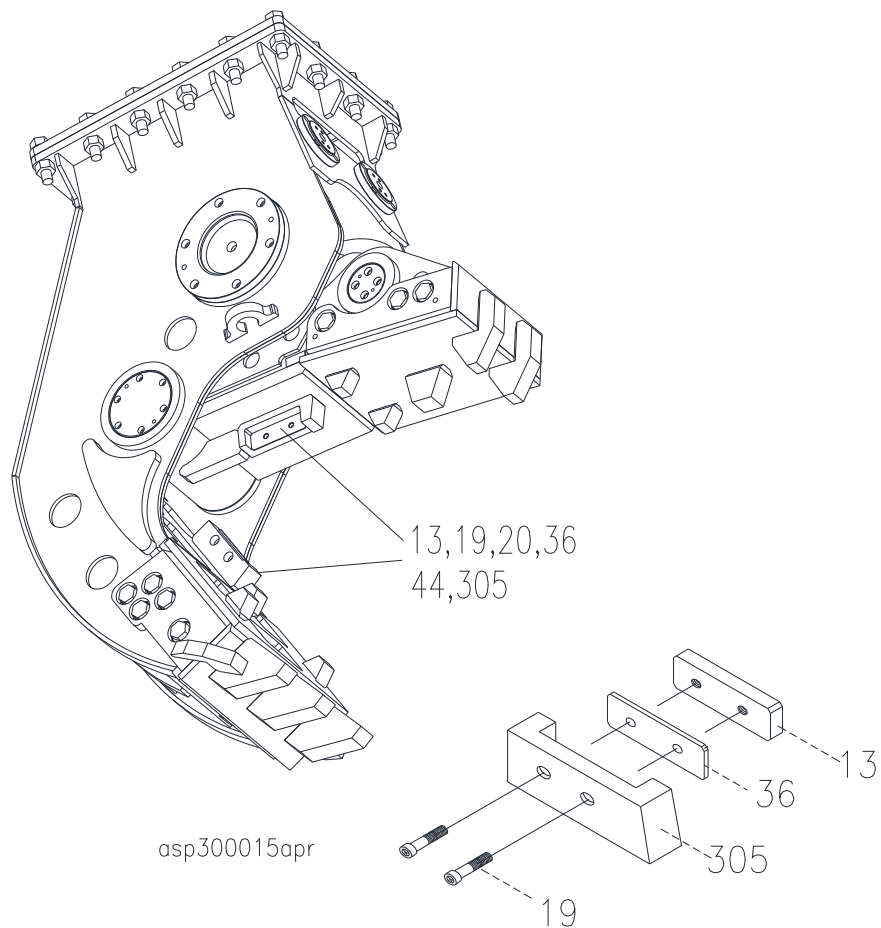


Fig. 5-3B Cutter Kit

Table 5.3 Cutter Kit

<u>Pos</u>	<u>Part Name</u>	<u>Part No.</u>	<u>Description / Specification</u>	<u>Qty</u>	<u>Note</u>
---	Cutter Kit	577558	Cutter Kit Includes Note 3	1	
13	Cutter	P2014120		2	3
19	Lock washer	840235	M12	4	3
20	Socket Flat Head Bolt	577468	M12-1.75 x 60	4	3
36	Shim Plate	P2014180		2	3
44	Lock Nut	91019	M12	4	3
305	Tooth	P2011250	Not Included. Shown For Reference Only	---	

Note: 3. Included In Cutter Kit

5.0 Parts List – ASP3000

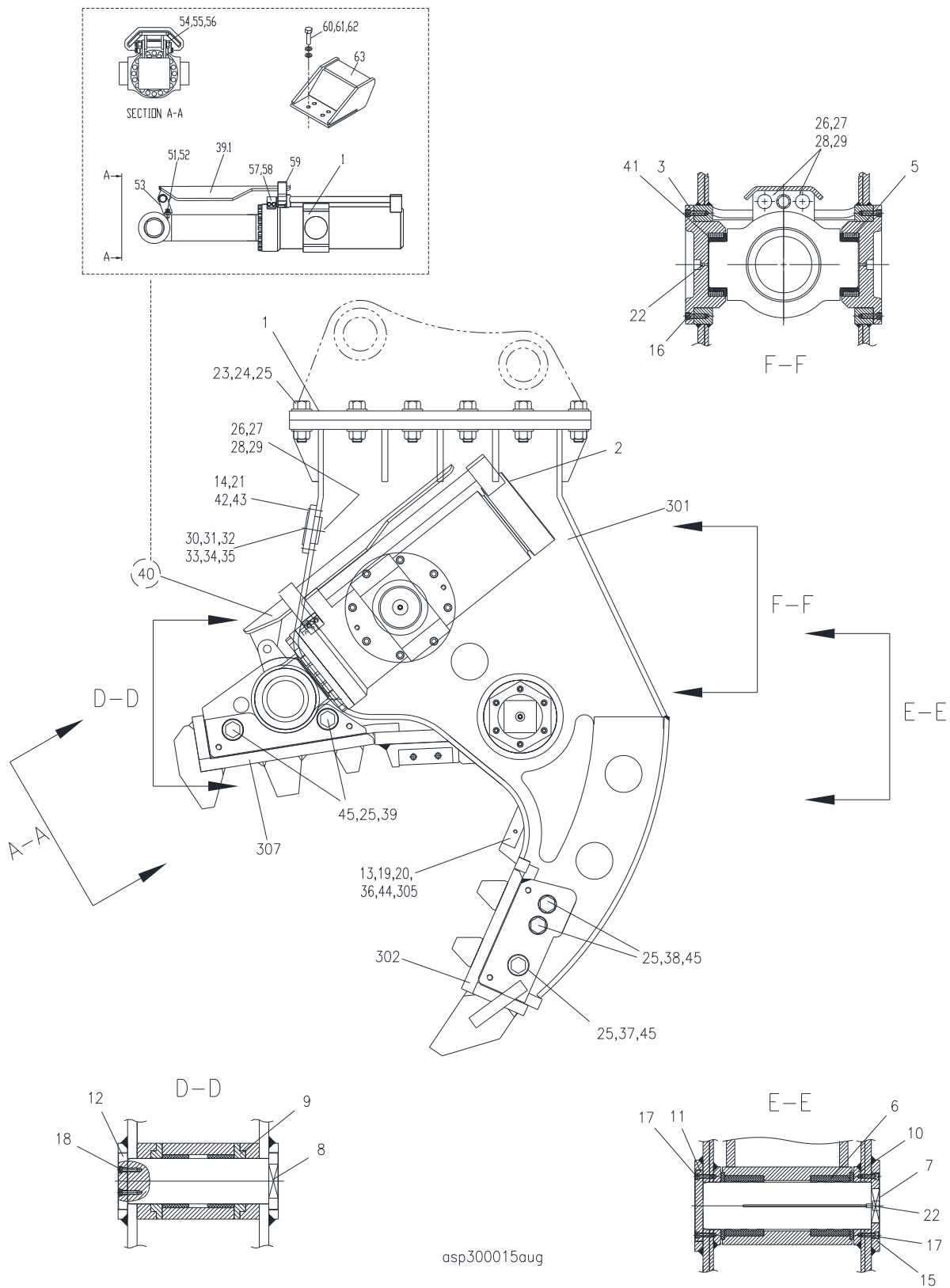


Fig. 5-4 ASP3000 Assembly (Less Mounting & Hoses)

5.0 Parts List – ASP3000**Table 5.4 ASP3000 Assembly (Less Mounting & Hoses)**

Pos	Part Name	Part No.	Description / Specification	Qty	Note
1	Plate	---	Mounting Plate / Bracket Option	---	
2	Cylinder Assembly	P3014000		1	
3	Cover, Cylinder Hinge	P3010010		2	
4	---	---		---	
5	Bushing, Hinge (1)	P3010030		2	
6	Bushing, Hinge (2)	P3010040		2	
7	Shaft, Hinge (1)	P3010050		1	
8	Shaft, Hinge (2)	P3010060		1	
9	Ring, Hinge (1)	P3010070		2	
10	Ring, Hinge (2)	P3010080		2	
11	Cover, Hinge (1)	P3010090		1	
12	Cover, Hinge (2)	P3010100		1	
13	Cutter	P2014120		2	3
14	Flange, [OUT]	P3010120		1	
15	Flange, Hex	P3010130		1	
16	Socket Head Bolt	577563	M16-2.0 x 65	16	
17	Socket Head Bolt	90564	M12-1.75 x 40	12	
18	Socket Head Bolt	719733	M10-1.50 x 40	4	
19	Washer, Spring	840235	M12	4	3
20	Socket Flat Head Bolt	577468	M12-1.75 x 60	4	3
21	Socket Head Bolt	575816	M12-1.75 x 25	8	
22	Grease Nipple	90200		3	
23	Bolt, Hex	576672	M36-4.0 x 110	16	
24	Nut, Nylon	90519	M36-4.0	16	
25	Washer, Flat	90521	M36	42	2
26	Hose, [IN]	P3010140		1	
27	Hose, [OUT]	P3010150		1	
28	Adapter	PF5454000		4	
29	O-Ring	OR0000P39		4	
30	Flange, 1"	A101582		1	

Note: 2. Included In Tooth Kit

3. Included In Cutter Kit

5.0 Parts List – ASP3000

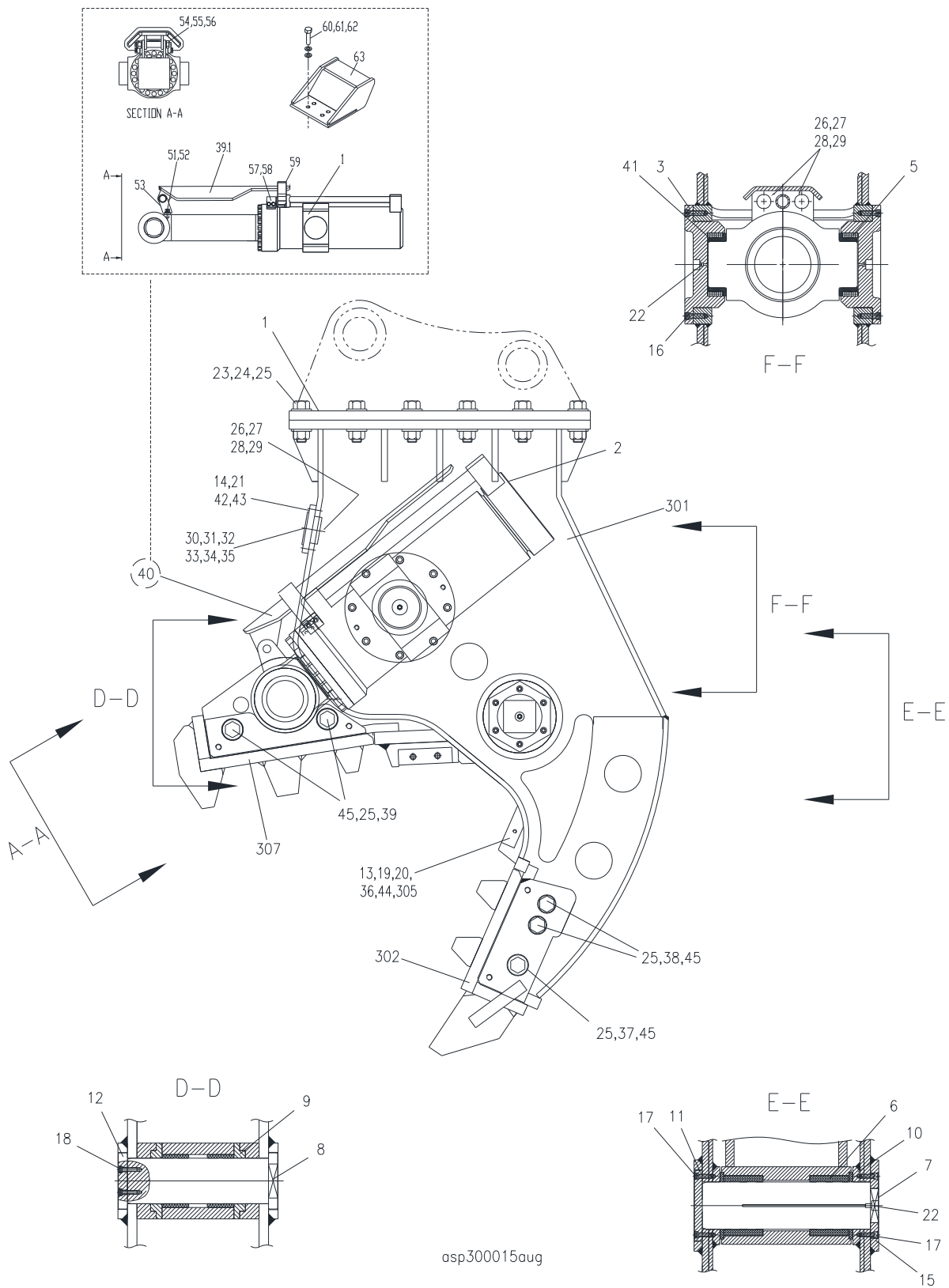


Fig. 5-4 ASP3000 Assembly – (Less Mounting & Hoses)

5.0 Parts List – ASP3000**Table 5.4 [cont'd] ASP3000 Assembly (Less Mounting & Hoses)**

<u>Pos</u>	<u>Part Name</u>	<u>Part No.</u>	<u>Description / Specification</u>	<u>Qty</u>	<u>Note</u>
31	O-Ring	677977		1	
32	Flange	570975		1	
33	O-Ring	659275		1	
34	Elbow 45	TF1111045		1	
35	Elbow 45	TF5454045		1	
36	Shim Plate	P2014180		2	3
37	Pin	P3025000		2	2
38	Pin	P3026000		4	2
39	Pin	P3027000		4	2
40	Cylinder Cover Ass'y	P3015000		1	
40.1		P31A5100			5
41	Cylinder Hinge Bush	P3010020		2	
42	Flange, [IN]	P2014130		1	
43	Socket Head Bolt	658669	M14-2.00 x 50	8	
44	Lock Nut	91019	M12-1.75	4	3
45	Lock Nut	577567	M36-4.0	10	
51	SH Bolt	578227	M16-2.0 x 35	2	5
52	LK Washer	056245	M16	2	5
53	Bracket Assy	P3015030		1	5
54	HH Bolt	577562	M24-3.00 x 180	1	5
55	FL Washer	901291	M24	2	5
56	Nut	90507	M24		5
57	SH Bolt	90522	M12-1.75 X 40	4	5
58	LK Washer	840235	M12	4	5
59	Bracket	P31A5200		1	5
60	SH Bolt	578228	M20-2.50 x 50	4	5
61	LK Washer	100088	M20	4	5
62	FL Washer	667628	M20	4	5
63	Guard	P21A600		1	5
301	Body Assembly	P3021000		1	
302	Tooth W.A Lower	P3023000	Weldment Assembly With Teeth	1	2
305	Tooth	P2011250		2	
306	Arm Assembly	P3022000		1	
307	Tooth W.A. Upper	P3024000	Weldment Assembly With Teeth	1	2

Note 2. Included In Tooth Kit

Note 3. Included In Cutter Kit

Note 5. Begin Serial no.

5.0 Parts List – ASP3000

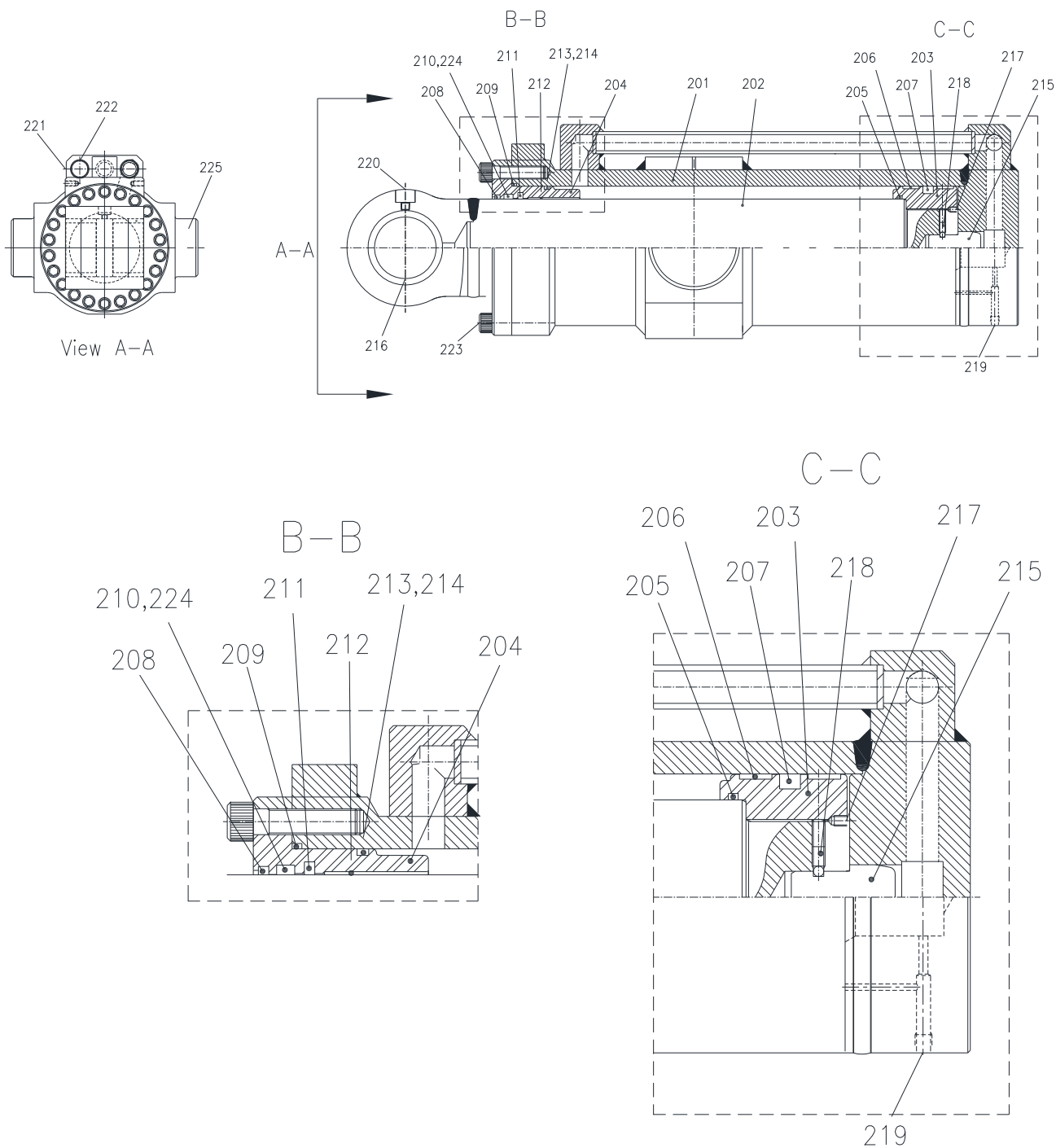


Fig. 5-5 Hydraulic Cylinder Assembly

Table 5.5 Hydraulic Cylinder Assembly – ASP3000

<u>Pos</u>	<u>Part Name</u>	<u>Part No.</u>	<u>Description / Specification</u>	<u>Qty</u>	<u>Note</u>
2	Cylinder Assembly	P3014000		1	
201	Tube Ass'y	P3014010		1	

5.0 Parts List – ASP3000**Table 5.5 [cont'd] Hydraulic Cylinder Assembly – ASP3000**

Pos	Part Name	Part No.	Description / Specification	Qty	Note
202	Rod Ass'y	P3014020		1	
203	Piston	P3014030		1	
204	Rod Cover	P3014040		1	
205	O-Ring	572111		1	4
206	Wear Ring	P3018020		2	4
207	Piston Seal	P3018030		1	4
208	Dust Seal	P3018040		1	4
209	O-Ring	101777		1	4
210	Rod Seal	P3018050		1	4
211	Step Seal (OMS-MR)	P3018080		1	4
212	DU Bush	P3014120		1	
213	O-Ring	A2507010		1	4
214	Back Up Ring	P3018100		1	4
215	Cushion Plunger	P3014150		1	
216	Steel Bush	P3014160		1	
217	Set Screw	P3014170		1	
218	Steel Ball	P3014180		1	
219	Plug	P3014190		1	
220	Grease Nipple	P3014200		1	
221	Plug	P3014210		1	
222	Plug	P3014220		2	
223	Wrench Bolt	P3014230		22	
224	Back Up Ring	P3018060		1	4
225	Hinge Bush	P3010020		2	

Table 5.6 Seal Set for Cylinder

Pos	Part Name	Part Number	Specification / Remarks	Qty	Note
---	Seal Set	P3018000	Seal Set Includes the following	1-Set	
205	O-Ring	572511		1	4
206	Wear Ring	P3018020		2	4
207	Piston Seal	P3018030		1	4
208	Dust Seal	P3018040		1	4
209	O-Ring	101777		1	4
210	Rod Seal	P3018050		1	4
211	Step Seal (OMS-MR)	P3018080		1	4
213	O-Ring	A2507010		1	4
214	Back Up Ring	P3018100		1	4
224	Back Up Ring	P3018060		1	4

6.0 Parts Order Form

Product Material Processor
 Model _____
 Serial No. _____

Please provide complete information including the Product, Model and Serial Number when ordering parts. See Section 2.3 Owner's record of the equipment.

Please fill out completely

Line	Part Name	Part Number	Quantity	Price
1				
2				
3				
4				
5				
6				
7				
8				
9				
10				

Your contact information

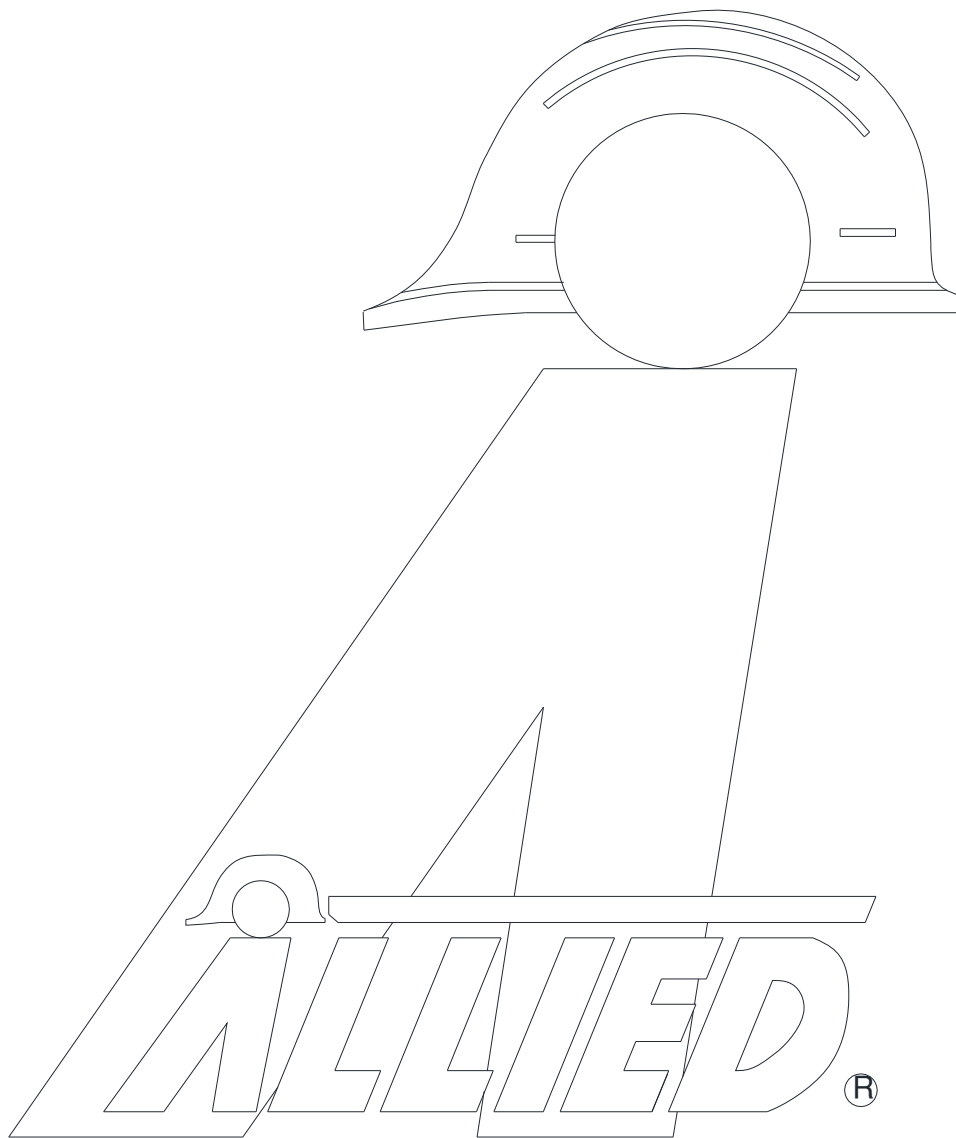
Your Name _____ Company Name _____
 Phone _____ Account Number _____
 Fax _____ Purchase order _____
 Email _____ Shipping method _____
 See note*

Billing Address _____ Shipping Address _____

***Note: All backordered parts will be shipped when available via the same method as the original order unless initialed and checked below:**

Initials _____
☐ Ship complete order only
☐ Ship available parts and contact customer on disposition of backordered parts
☐ Other – specify below

[illegible]



3900 Kelley Avenue, Cleveland, Ohio 44114
Tel: 216-431-2600 Fax: 216-431-2601
e-mail: Sales@AlliedCP.com
website: <http://www.AlliedCP.com>