

Original instructions

ENG 0/08

**PARTS MANUAL**  
**PMBC2525DSENG.008**

**CUTTER-CRUSHER**  
**SANDVIK BC2525 D-JAW**  
**SANDVIK BC2525 S-JAW**

Serial No.

**RD25RA0037-UP**

---

## TABLE OF CONTENTS

1. Cylinder . . . . .	4
2. Hydraulics . . . . .	6
3. Brake . . . . .	8
4. Hydraulic motor . . . . .	9
5. Slewing ring . . . . .	10
6. Body parts D-JAW . . . . .	12
7. Body parts S-JAW . . . . .	14
8. Wear items D-JAW . . . . .	16
9. Wear items S-JAW . . . . .	18
10. Water Jet Kit. . . . .	19
11. Jaw assembling stand . . . . .	20

---

### GENUINE SANDVIK SPARE PARTS

Sandvik genuine spare parts are designed and manufactured by using the latest technological knowledge and engineering skills. Sandvik spare parts are made of the best available materials with the most advanced manufacturing techniques.

It is important that you use only genuine Sandvik spare parts, to ensure easy operation, maintenance and repair of the product. Please note that eventual warranty claims will be handled only if you have used genuine Sandvik parts in your Sandvik product.

### LOCATION OF THE SERIAL NUMBER

It's important to make correct reference to the serial number of the product when ordering spare parts. Identification of serial number is the only proper means of maintaining and identifying parts for a specific

product. The location of equipment serial number is pointed in "Operation and maintenance" manual.

### SPARE PART ORDERS

Quick spare part deliveries are secured by exact orders.

#### Required information:

- Name of customer and contact person
  - Order number (when available)
  - Delivery address
  - Mode of delivery (air mail etc.)
  - Required delivery date
  - Invoicing address
  - Model and serial number of the product
  - Name, number and required amount of spare parts
-

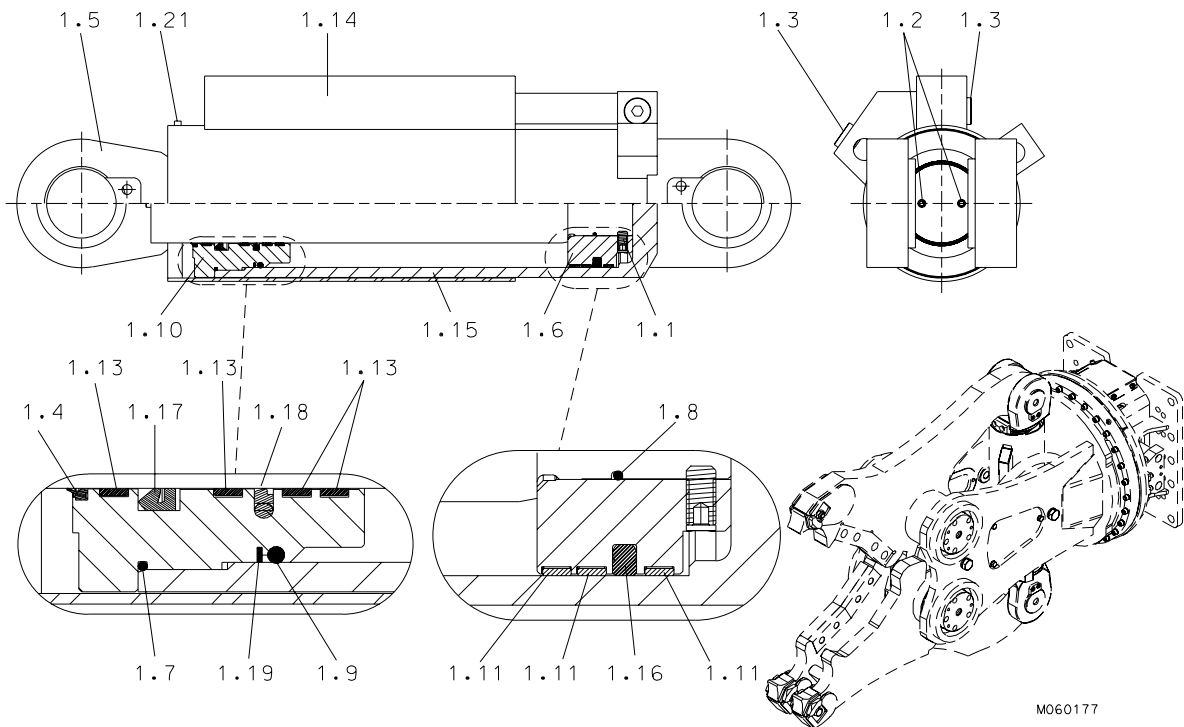
---

---

# PARTS

---

# I. CYLINDER



M060177

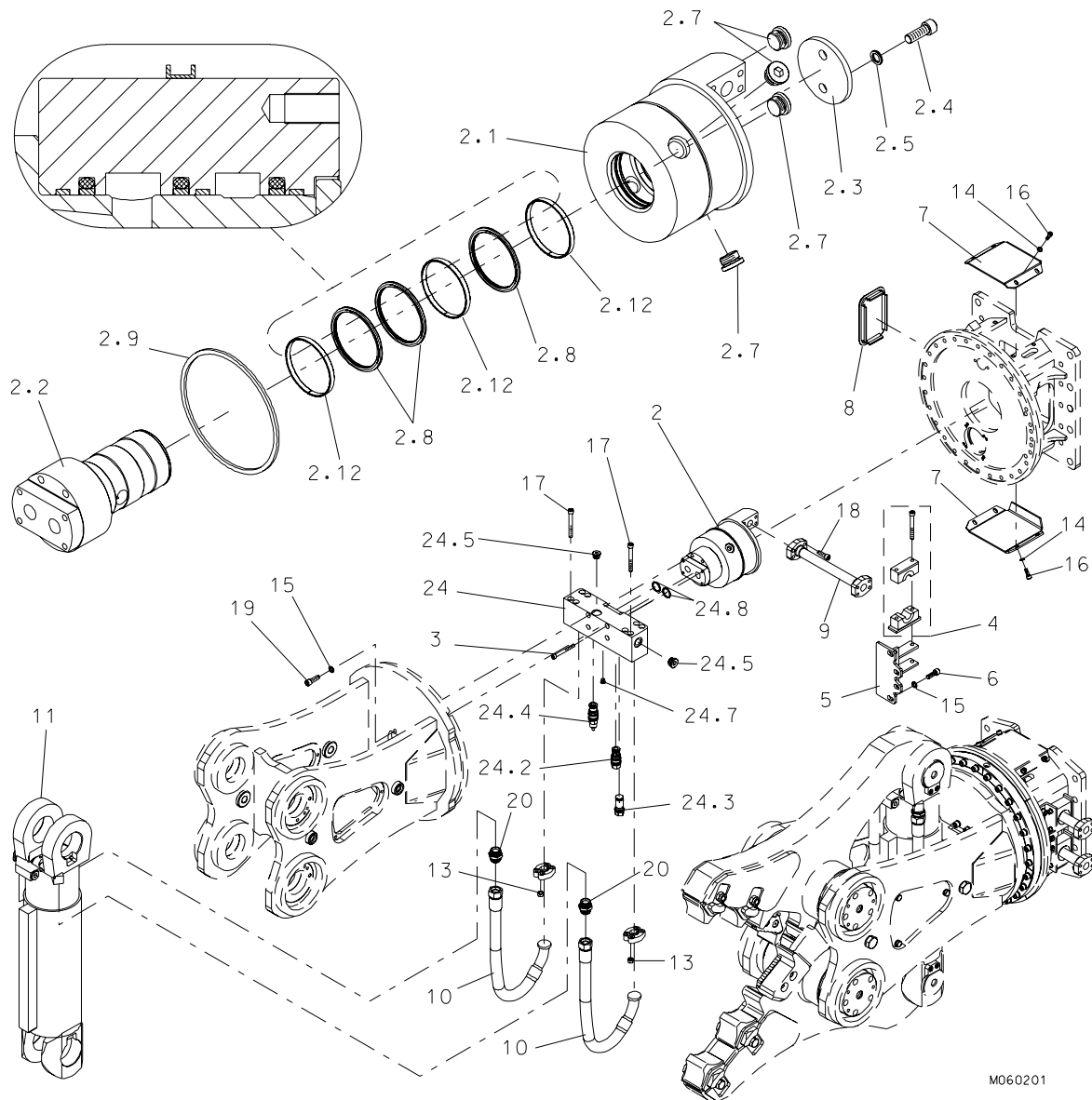
Item	Description	Part no.	Specification	Note	Qty
1	Hydraulic cylinder (incl. parts 1.1-1.21)	951696			1
1.1	Hex. socket screw	951697	M12x25-45H ISO 4026		3
1.2	Hex. socket screw	951705	M12x40-45H ISO 4026		2
1.3	Flange plug	90410	R1		2
1.4	Wiper	951709		*	1
1.5	Piston rod	951708			1
1.6	Piston	951707			1
1.7	O-ring	902700	D200	*	1
1.8	O-ring	910001	D104	*	1
1.9	O-ring	902697	D189	*	1
1.10	Guide	951706			1
1.11	Steering ring	951704		*	3
1.13	Steering ring	951703		*	4
1.14	Shield	156150			1
1.15	Cylinder body	951702			1
1.16	Seal	951701		*	1
1.17	Seal	951700		*	1
1.18	Seal	951699		*	1
1.19	Supporting ring	951698		*	1
1.21	Hex. socket screw	951404	M16x30-8.8 ISO 4762		4

---

<b>Item</b>	<b>Description</b>	<b>Part no.</b>	<b>Specification</b>	<b>Note</b>	<b>Qty</b>
2	Seal set for cylinder	951715			1
	* ) Are included in seal set for cylinder				

---

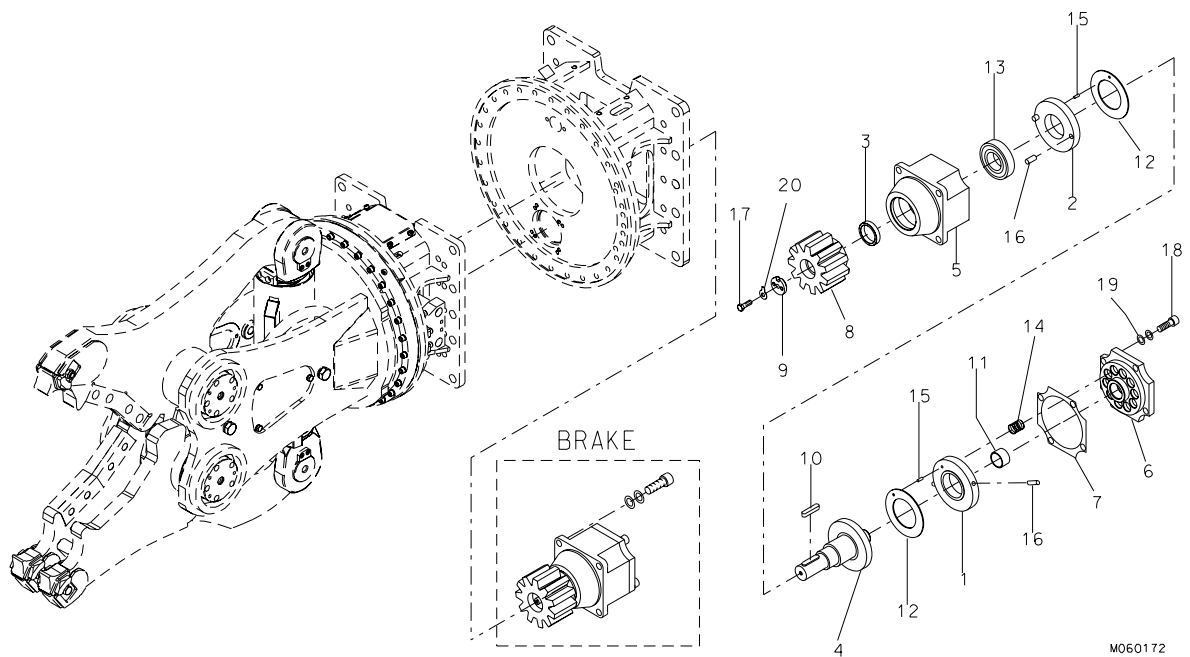
## 2. HYDRAULICS



Item	Description	Part no.	Specification	Note	Qty
2	Bulkhead union (incl. parts 2.1-2.12)	157794			1
2.1	Body	157022			1
2.2	Spool	150753			1
2.3	Cover	112705			1
2.4	Hex. socket screw	91005	M16x45-8.8 DIN 912		2
2.5	Lock washer	90597	M16 NORD-LOCK		2
2.7	Flange plug	90410	G1		4
2.8	Seal	950183		*	3
2.9	Seal	951938		*	1
2.12	Guide-ring	951334		*	3
2.13	Seal set for bulkhead union	151252			1
3	Hex. socket screw	951686	M12x110-12.9 ISO 4762		4

Item	Description	Part no.	Specification	Note	Qty
4	Fastener	157678			2
5	Support	158461			1
6	Hex. socket screw	91100	M16x40-8.8 ISO 4762		8
7	Shield plate	111621			2
8	Plug	104100			1
9	Pipe	157793			2
10	Hose assembly	155693			2
11	Hydraulic cylinder	951696			1
13	Hex. nut	903073	M14-8 ISO 4032		8
14	Lock washer	91012	M12 NORD-LOCK		12
15	Lock washer	90597	M16 NORD-LOCK		8
16	Hex. socket screw	91045	M12x30-8.8 ISO 4762		8
17	Hex. socket screw	952197	M14x160-12.9 ISO 4762		8
18	Hex. socket screw	90593	M14x45-8.8 ISO 4762		8
19	Hex. socket screw	91032	M16x50-8.8 ISO 4762		4
20	Adapter	901884			2
24	Manifold (incl. parts 24.2-24.8)	158288			1
24.2	Valve	952098	SUN COHA T-17A		1
24.3	Valve	952097	SUN CXHA T-16A		1
24.4	Valve	952096	SUN CAGA T-17A		1
24.5	Flange plug	90410	G1		1
24.6	Flange plug	90401	G3/4		1
24.7	Flange plug	90403	G1/4		1
24.8	O-ring	90009	D38		2
24.9	Seal set for valve T-16A	952099			1
24.10	Seal set for valve T-17A	903161			2
	*) Are included in seal set for bulkhead union				

### 3. BRAKE

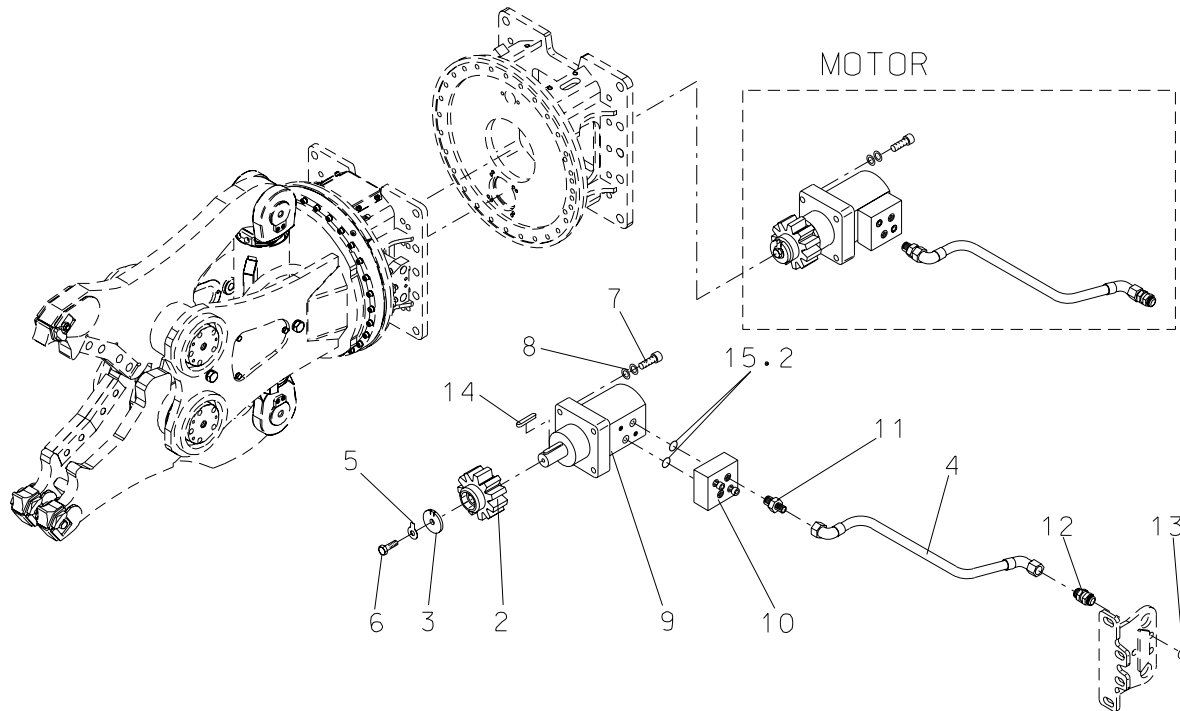


M060172

Item	Description	Part no.	Specification	Note	Qty
Kit	Brake (incl. parts 1-20)	151238			1
1	Supporting ring	140195			1
2	Supporting ring	140196			1
3	Bushing	140197			1
4	Shaft	140198			1
5	Body	140294			1
6	Cover	140293			1
7	Spacer plate	140193			2
8	Cylindrical gear	112929			1
9	Washer	140052			1
10	Key	901482			1
11	Bush	901483			1
12	Plate	901484			2
13	Ball bearing	901485			1
14	Spring	901486			10
15	Parallel pin	901487			2
16	Parallel pin	901488			4
17	Hexagon screw	90570	M8x25-8.8 ISO 4017		1
18	Hex. socket screw	900046	M12x35-8.8 ISO 4762		8
19	Lock washer	91012	M12 NORD-LOCK		8
20	Washer	902925	8.4 DIN 93		1



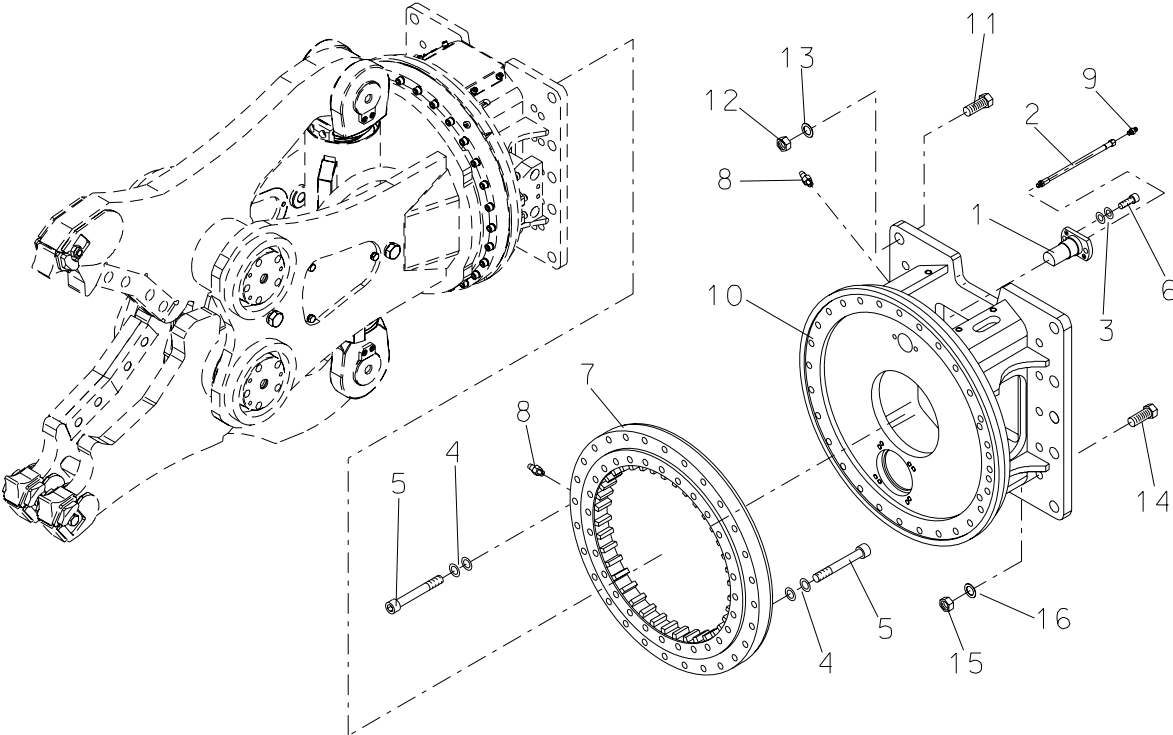
## 4. HYDRAULIC MOTOR



M060171

Item	Description	Part no.	Specification	Note	Qty
Kit	Hydraulic motor (incl. parts 2-14)	154403			1
2	Cylindrical gear	154143			1
3	Washer	153332			1
4	Hose assembly	111643			2
5	Washer	902925	8.4 DIN 93		1
6	Hexagon screw	90591	M8x20-8.8 ISO 4017		1
7	Hex. socket screw	900046	M12x35-8.8 ISO 4762		4
8	Lock washer	91012	M12 NORD-LOCK		4
9	Hydraulic motor	951451			1
10	Pressure adjusting valve (incl. part 15.2)	901320			1
11	Adapter	950038			2
12	Bulk head union	93239			2
13	Cap	93234			2
14	Key	903156			1
15.2	O-ring	903190	D23		2

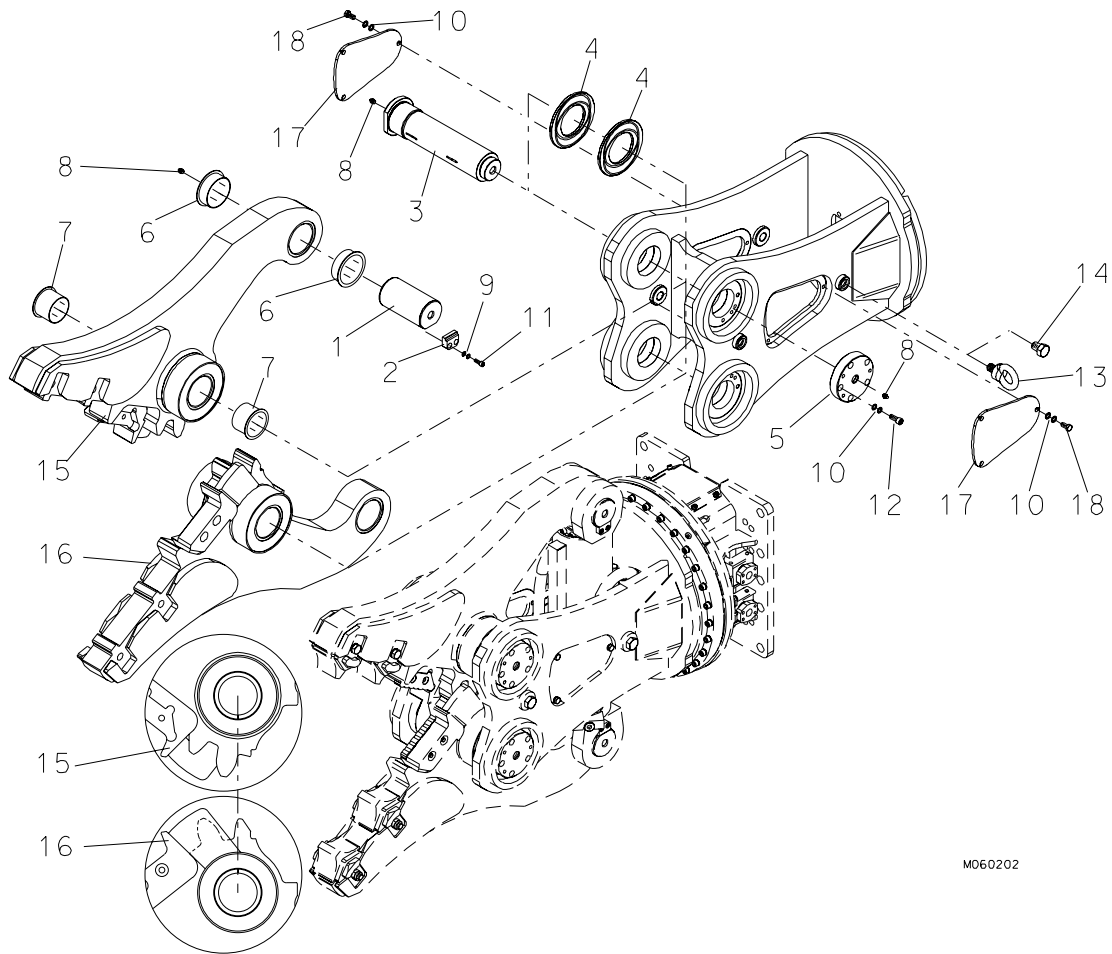
# 5. SLEWING RING



M060173

Item	Description	Part no.	Specification	Note	Qty
1	Guide	111417			1
2	Hose assembly	111637			1
3	Lock washer	91012	M12 NORD-LOCK		2
4	Lock washer	90597	M16 NORD-LOCK		60
5	Hex. socket screw	902915	M16x110-12.9 ISO 4762		60
6	Hex. socket screw	91045	M12x30-8.8 DIN 912		2
7	Slewing ring	901318			1
8	Grease nipple	90204	M10x1 DIN 71412-T1 A		5
9	Adapter	903148			1
10	Mounting bracket	112738			1
11	Hexagon screw	90589	M24x110-12.9 DIN 931		14
12	Lock nut	90507	M24-12 DIN 985		14
13	Washer	90511	25 DIN 6916		14
14	Hexagon screw	90520	M36x140-8.8 DIN 931		14
15	Lock nut	90519	M36-8 DIN 985		14
16	Washer	90521	37 DIN 6916		14

## 6. BODY PARTS D-JAW

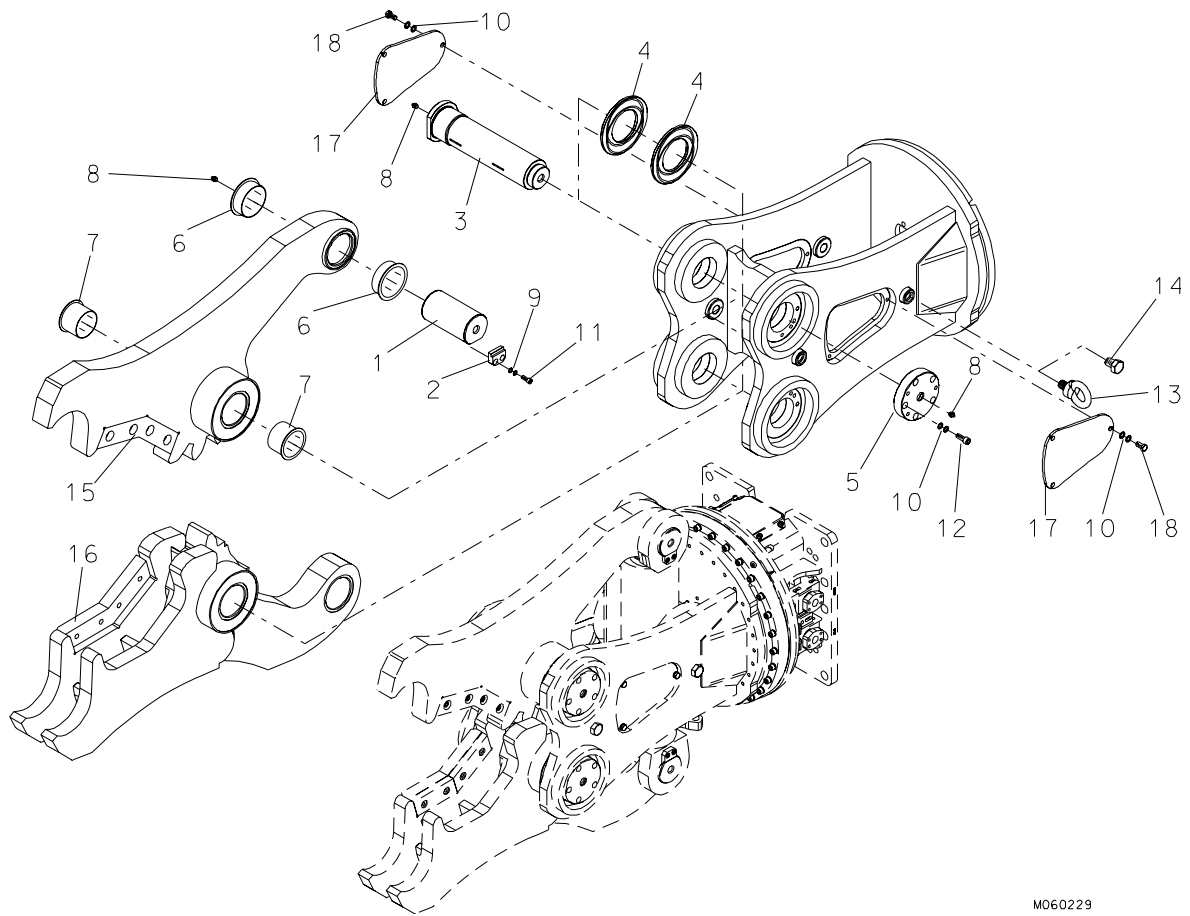


M060202

Item	Description	Part no.	Specification	Note	Qty
1	Shaft	111415			2
2	Bar	111416			2
3	Shaft	155764			2
4	Spacer	140118			4
5	Nut	111413			2
6	Sliding bear	903145	12050 Wieland WB802WF		4
7	Sliding bear	903146	12090 Wieland WB802WF		4
8	Grease nipple	90204	M10x1 DIN 71412-T1 A		6
9	Lock washer	91012	M12 NORD-LOCK		4
10	Lock washer	90597	M16 NORD-LOCK		8
11	Hex. socket screw	91045	M12x30-8.8 ISO 4762		4
12	Hex. socket screw	91100	M16x40-8.8 ISO 4762		2
13	Lifting eye	901464	M36 DIN 580		2
14	Hexagon screw	901465	M36x40-8.8 ISO 4017		4
15	Jaw 2 (incl. parts 6-7)	158202			1
16	Jaw 1 (incl. parts 6-7)	158201			1
17	Cover	155852			2
18	Hexagon screw	90514	M16x30-8.8 ISO 4017		6

<b>Item</b>	<b>Description</b>	<b>Part no.</b>	<b>Specification</b>	<b>Note</b>	<b>Qty</b>
21	Label set (incl. part 21.1)	161219			1
21.1	Safety label set	163804			1
30	Jaw kit, complete (incl. parts 15 and 16)	158200	Incl. also cutting blades 158304, shim plates 158305, screws 903151, lock washers 90597 and nuts 90548		1

## 7. BODY PARTS S-JAW

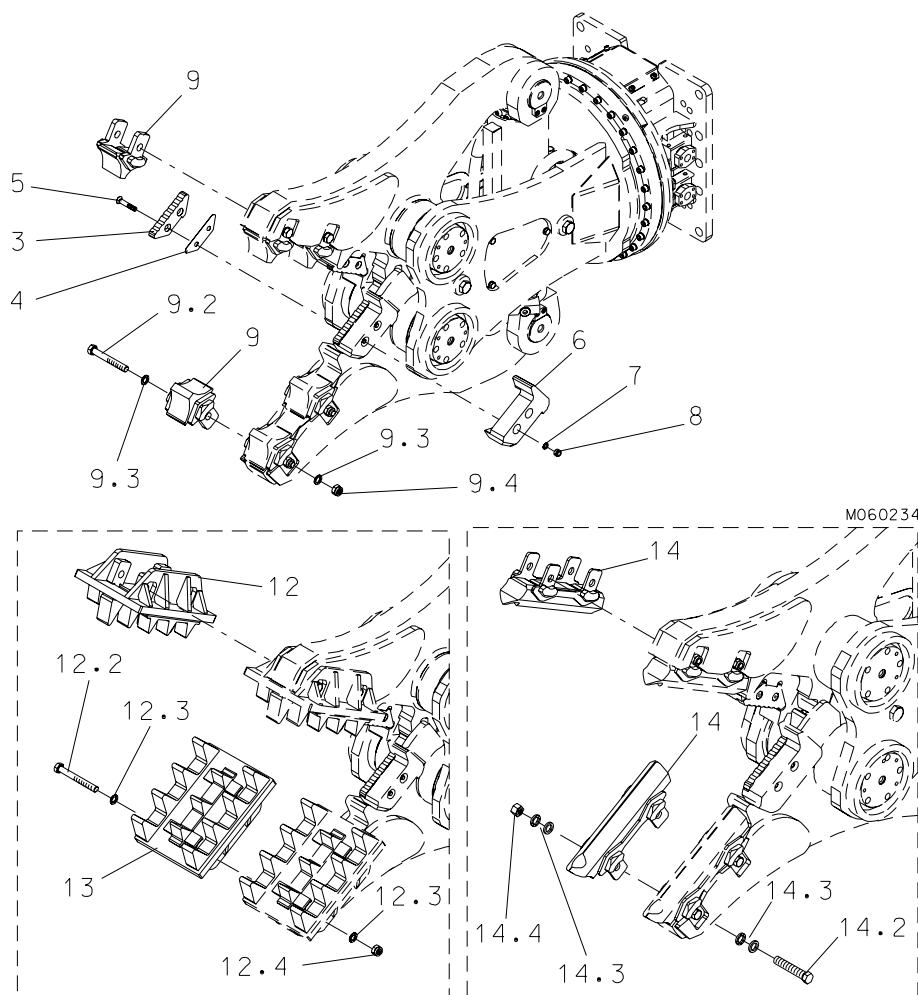


M060229

Item	Description	Part no.	Specification	Note	Qty
1	Shaft	111415			2
2	Bar	111416			2
3	Shaft	155764			2
4	Spacer	140118			4
5	Nut	111413			2
6	Sliding bear	903145	12050 Wieland WB802WF		4
7	Sliding bear	903146	12090 Wieland WB802WF		4
8	Grease nipple	90204	M10x1 DIN 71412-T1 A		6
9	Lock washer	91012	M12 NORD-LOCK		4
10	Lock washer	90597	M16 NORD-LOCK		8
11	Hex. socket screw	91045	M12x30-8.8 ISO 4762		4
12	Hex. socket screw	91100	M16x40-8.8 ISO 4762		2
13	Lifting eye	901464	M36 DIN 580		2
14	Hexagon screw	901465	M36x40-8.8 ISO 4017		4
15	Jaw 2 (incl. parts 6-7)	162053	Incl. also cutting blades 160496, shim plates 160497, screws 952603 and lock washers 90597		1

Item	Description	Part no.	Specification	Note	Qty
16	Jaw 1 (incl. parts 6-7)	162046	Incl. also cutting blades 160496, shim plates 160497, screws 952603 and lock washers 90597		1
17	Cover	155852			2
18	Hexagon screw	90514	M16x30-8.8 ISO 4017		6
20	Label set for Rammer	156139			1
21	Label set (incl. part 21.1)	161219			1
21.1	Safety label set	163804			1
30	Jaw kit, complete (incl. parts 15 and 16)	162045			1

## 8. WEAR ITEMS D-JAW



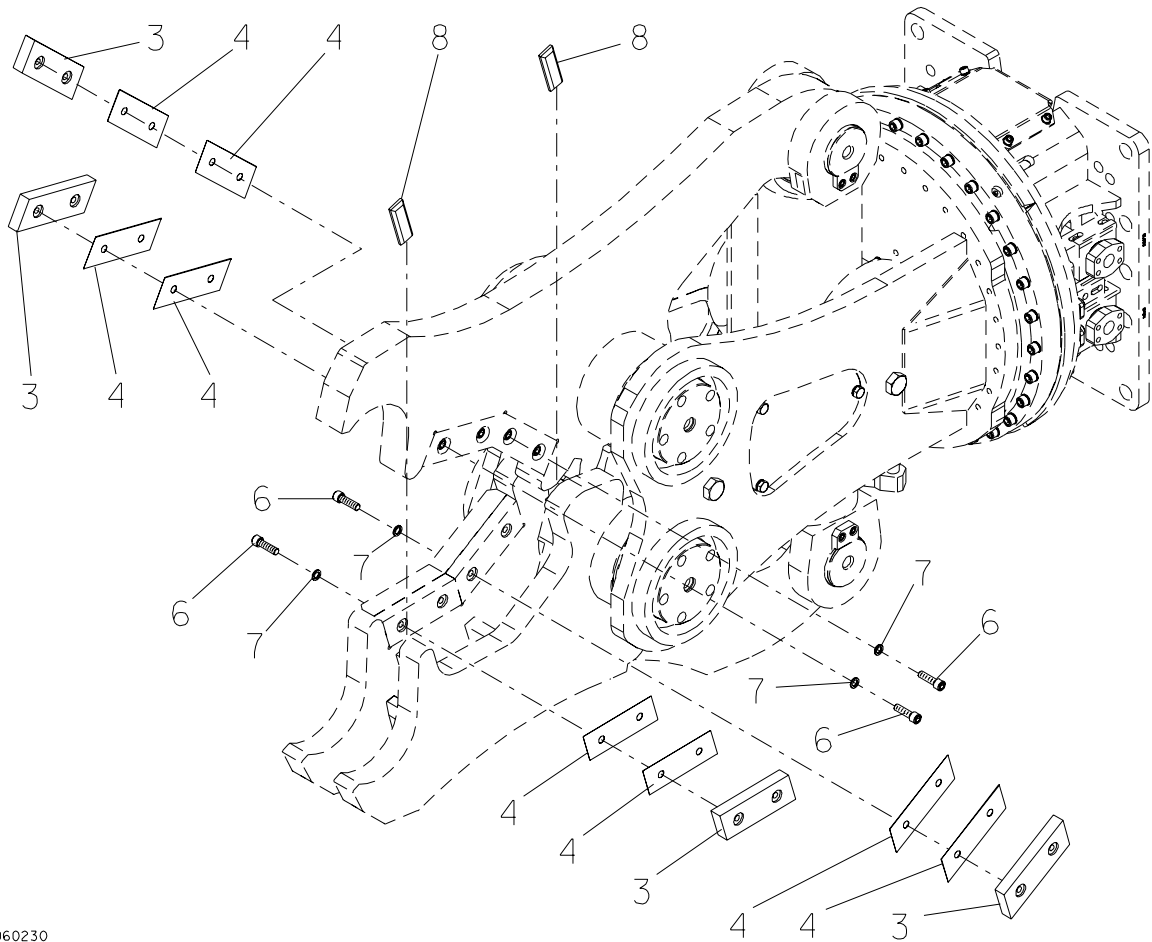
Item	Description	Part no.	Specification	Note	Qty
3	Cutting blade	158304			2
4	Shim plate	158305			2
5	Hex. socket screw	903151	M16x90-8.8 ISO 10642		4
6	Cutting blade seat	161914			2
7	Lock washer	90597	M16 NORD-LOCK		4
8	Lock nut	90548	M16-8 DIN 985		4
9	Tooth (incl. parts 9.2-9.4)	151523			4
9.2	Hex. screw	950167	M24x180-8.8 ISO 4014		1
9.3	Lock washer	91038	M24 NORD-LOCK		2
9.4	Lock nut	90507	M24-12 DIN 985		1
11	Pulverizing plate (incl. parts 12-13)	151171			1
12	Pulverizing plate (incl. parts 12.2-12.4)	151527			1
12.2	Hex. screw	91108	M24x200-8.8 ISO 4014		2
12.3	Lock washer	91038	M24 NORD-LOCK		4
12.4	Lock nut	90507	M24-12 DIN 985		2
13	Pulverizing plate (incl. parts 12.2-12.4)	151526			1



---

<b>Item</b>	<b>Description</b>	<b>Part no.</b>	<b>Specification</b>	<b>Note</b>	<b>Qty</b>
14	Wood cutting tooth (incl. parts 14.2-14.4)	152519			2
14.2	Hex. screw	902970	M24x150-8.8 ISO 4017		2
14.3	Lock washer	91038	M24 NORD-LOCK		4
14.4	Lock nut	90507	M24-12 DIN 985		2

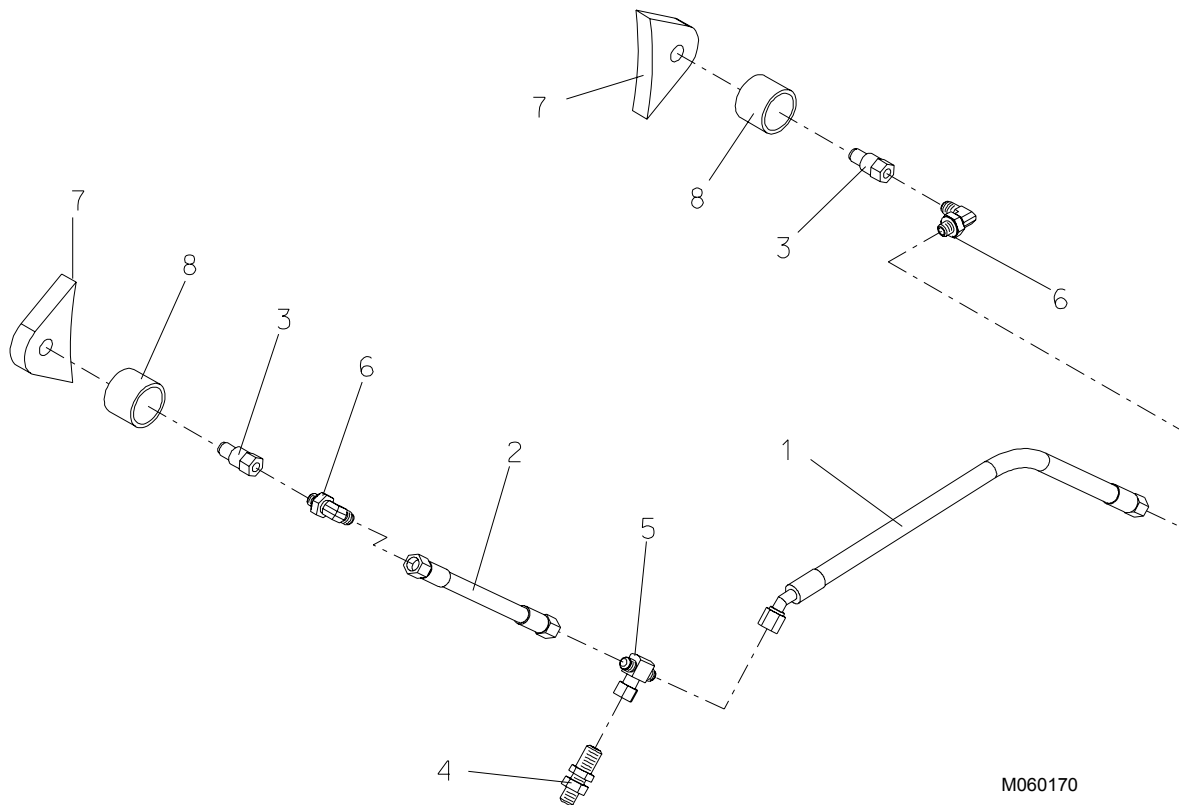
## 9. WEAR ITEMS S-JAW



M060230

Item	Description	Part no.	Specification	Note	Qty
3	Cutting blade	160496			4
4	Shim plate	160497			8
6	Hex. socket screw	952603	M16x55-12.9 ISO 4762		8
7	Lock washer	90597	M16 NORD-LOCK		8
8	Plate	160789			2

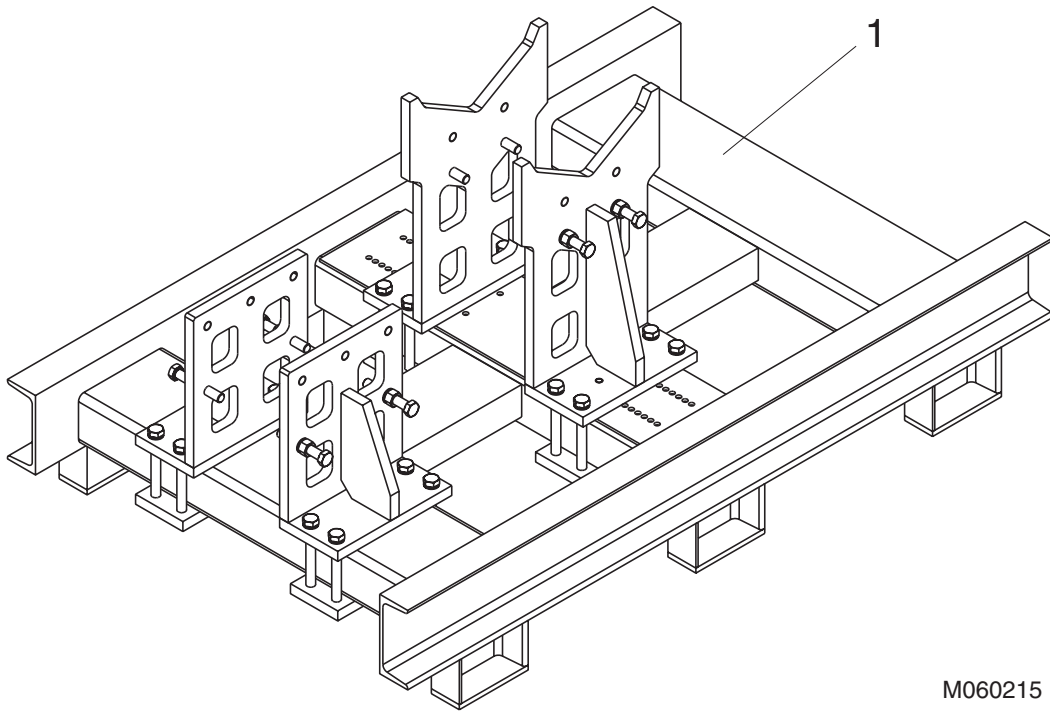
## 10. WATER JET KIT



M060170

Item	Description	Part no.	Specification	Note	Qty
Kit	Water jet kit (incl. parts 1-8)	150757			1
1	Hose assembly	950208	L=610 mm		1
2	Hose assembly	950207	L=240 mm		1
3	Nozzle	950206			2
4	Bulkhead union	950136			2
5	Union tee	950209			1
6	Elbow	93054			2
7	Plate	112345			2
8	Bushing	112346			2

## II. JAW ASSEMBLING STAND



M060215

Item	Description	Part no.	Specification	Note	Qty
1	Assembling stand	159379			1







48-40-14056-36-208-140  
60-40-14056-33-144-231

SANDVIK MINING AND CONSTRUCTION OY, BREAKERS LAHTI P.O. BOX 165, (TAIVALKATU 8), FI-15101 LAHTI, FINLAND

TEL. +358 205 44 151 FAX +358 205 44 150 [www.sandvik.com](http://www.sandvik.com)