

# Hy-Ram

**Hydraulic  
Impact  
Breaker**

**Model  
HR330**



**ALLIED**

## Parts Manual - HY-RAM Series

Keep this manual in a convenient location so that it is easily accessible for future reference. Contact your Allied Dealer or the Allied Customer Service Department for replacement manuals. Inquiries regarding the content of this manual must include effective date shown on inside cover.



PM575474

## Contact Information



3900 Kelley Ave

Cleveland, Ohio 44114

Tel: 216-431-2600

Website: [www.alliedcp.com](http://www.alliedcp.com)

Fax: 216-431-2601

E-mail: [sales@alliedcp.com](mailto:sales@alliedcp.com)

Continuous improvement of our products is an Allied policy. The material in this publication, including figures, captions, descriptions, remarks and specifications, describe the product at the time of its printing, and may not reflect the product in the future. When changes become necessary, these will be noted in the table below. Specifications are based on published information at the time of publication. Allied Construction Products, LLC, reserves the right to change, edit, delete or modify the content of this document, including descriptions, illustrations and specifications without prior notification. For product or document updates go to [www.alliedcp.com](http://www.alliedcp.com).

**Table of Revision History for PM575474**

<b><u>Effective Date</u></b>	<b><u>Page</u></b>	<b><u>Summary of Change</u></b>
2014, Sep	10	Table 4.2 Item 31 – new (former) 676159 (B4006450).
2013, Nov	8,15	Fig. 5-2 Clarify seal profile to help ensure correct orientation at assembly. Table 4.1 Dimension change to wear plates – Full interchangeability old-to-new is preserved. Part numbers unchanged.
2011, Sep		Part number change – new (former) 676204 (A2007110), 101781 (B2507190)
2011, Aug	13, 17	Correct hose part number. Revise Table 7.1.
2011, May	---	Original issue of PM575474_11may

## Table of Contents

<b><u>Section</u></b>	<b><u>Page</u></b>
<b>Contact Information.....</b>	<b>i</b>
<b>Document Revision History.....</b>	<b>ii</b>
<b>Table Of Contents.....</b>	<b>ii</b>
<b>1.0 Introduction.....</b>	<b>1</b>
1.1 Purpose and Scope of This Manual.....	1
1.2 How to Order Replacement Manuals.....	1
1.3 Related Publications.....	1
<b>2.0 Equipment Identification.....</b>	<b>2</b>
2.1 Location of the Serial Number.....	2
2.2 Equipment Identification Tag.....	2
2.3 Owner's Record of the Equipment.....	2
<b>3.0 Safety and Identification Labels.....</b>	<b>3</b>
<b>4.0 Spare Parts Information.....</b>	<b>7</b>
4.1 Housing and Components.....	7
4.2 Breaker Assembly.....	9
4.3 Hydraulic Connections.....	15
4.4 Tools – Standard and Specialty.....	16
4.4.1 Standard Tools.....	16
4.4.2 Specialty Tools.....	16
4.5 Tool Lubrication - Chisel Paste.....	17
<b>5.0 Service Kits and Tools.....</b>	<b>18</b>
5.1 Tune-Up Kit.....	18
5.2 Seal Kit.....	19
5.3 Gas N2 Charge Tool Kit.....	21
<b>6.0 Mounting Information.....</b>	<b>22</b>
6.1 Mounting Brackets.....	22
6.2 Connection Plate.....	22
<b>7.0 How to Order Spare Parts.....</b>	<b>23</b>

<b><u>List of Figures</u></b>	<b><u>Page</u></b>
2-1 Location of the Serial Number.....	2
2-2 Equipment Identification Tag.....	2
3-1 thru 3-14 Safety & Identification Labels.....	3
3-15 Label Position on Equipment.....	5
4-1 Housing Box & Components.....	6
4-2 Breaker Assembly.....	8
4-3 Hydraulic Connections.....	15
4-4 Hydraulic Connections to Carrier – Typical.....	15
4-5 Standard & Specialty Tools.....	16
4-6 Tool Working Length.....	17
5-1 Tune-up Kit.....	18
5-2 Seal Set.....	19
5-3 N2 Gas Charge Kit & Back Head.....	21
5-4 N2 Gas Charge Kit & Accumulator.....	21
6-1 Bolt Mounting Bracket to Housing.....	22
6-2 Bolt Hole Mounting Connection Plate.....	22

<b><u>List of Tables</u></b>	<b><u>Page</u></b>
1.1 About This Manual	1
3.1 Safety & Information Label - Description	4
3.2 Safety & Information Labels - Ordering	6
4.1 Housing Box and Components.....	8
4.2 Breaker Assembly.....	10
4.3 Hydraulic Connections.....	11
4.4 Tools – Standard Type.....	13
4.5.2 Tool Lubrication - Chisel Paste.....	13
5.1 Tune-Up Kit.....	14
5.2 Seal Kit.....	16
5.3 Gas N2 Charge Tool Kit.....	17
6.1 Mounting Family & Hardware.....	18

## 1.0 Introduction

### 1.1 Purpose and Scope of This Manual

Table 1.1 About This Manual



Document ID.	PM575474
Type	Spare / Replacement Parts List
Current Status*	See Inside Cover
Product Name:	Mounted Hydraulic Impact Breaker
Series	Hy-Ram®
Applicable Model[s]:	HR330
Years of Manufacture:	Begin 2011
*Inquiries regarding this manual must include effective date shown on inside cover	

The material presented in this manual has been prepared in support of the product named in Table 1.1. It's intended solely for use with expressed model(s) and may be unsuitable with models unnamed.

The publication identified in Table 1.1 was created solely for information purposes and should not be considered all-inclusive. If further information is required, contact your local Allied dealer or the Allied Customer Service Department.

Parts Manuals do not include safety precautions or operating procedures. Figures depict views that are intended for parts identification and not for purposes of repair or service of the product. Material presented in this manual, including tables, figures, descriptions and captions, may show equipment that is optional.

How to use this Manual:

The Allied work tool consists of separate components and partial assemblies. Components are identified with the aid of figures, captions, item key, part name and quantity. If needed, 'remarks' and 'specifications' will further clarify the part's description or denote assignment with select unit(s) by serial number.

An order form is provided at the back of this manual. Prior to ordering parts, confirm that the information recorded on the equipment's identification label corresponds with Table 1.1. For the location of this label, refer to Section 2.0 of this manual.

The content of this document has been reviewed for accuracy. Allied Construction Products, LLC has endeavored to deliver the highest degree of accuracy and every effort has made to provide information as complete as possible. However, continuous improvement of our products is an Allied policy. The material in this publication, including figures, captions, descriptions, remarks and specifications, describe the product at the time of its printing, and may not reflect the product in the future. A table of revision history for this document is found on the inside cover.

### 1.2 How To Order Replacement Publications

This manual is an integral part of this product. Keep it in a convenient location so that it is easily accessible for future reference. If replacement manuals are required, they may be ordered by contacting your Allied dealer service center. Manuals may also be viewed and downloaded at: [www.alliedcp.com](http://www.alliedcp.com)

### 1.3 Related Publications

Allied Construction Products, LLC offers the following publications for the product identified in Table 1.1.

#### **1.3.1 Safety, Operation & Maintenance Manual SOM575469**

Applicable Models: Hy-Ram Series HR330-HR390

The Safety, Operation and Maintenance Manual has been prepared to assist the operator and maintenance personnel with the information necessary for the safe and proper use of the Allied work tool.

Content in the Safety, Operation & Maintenance Manual includes:

Safety Information  
 Equipment Serial Number and Model Identification  
 Technical Data (Weight & General Dimensions)  
 Basic Guidelines for Installation and Set-up  
 Pre-Operation Inspection  
 How to Operate the Allied Work Tool  
 Maintenance Schedule  
 N2 Gas Charging Instructions  
 Tool and Guide Bushing – Lubrication, Inspection, Wear Limits and Replacement  
 Troubleshooting  
 Removal From Carrier, Transporting, Lifting & Storage

## 1.0 Introduction & Scope

### 1.3.2 AEM Safety Manual for Hydraulic Breakers

#### AEM Safety Manual for Hydraulic Breakers

The Association of Equipment Manufacturers offers a safety manual designed for operators and maintenance personnel of hydraulic mounted breakers. The manual is available in Spanish, French and English. It is published in an illustrated format of sensible do's and don'ts, featuring typical daily situations on the job site. Content includes safety tips concerning the workplace and equipment, start up and shut down guidelines and special operating and maintenance precautions.

This publication is available by contacting:  
Association of Equipment Manufacturers  
Toll free 1-866-AEM-0442  
E-mail: [aem@aem.org](mailto:aem@aem.org)  
Website: [www.aem.org](http://www.aem.org)

Ask for FORM CMHB-1004, Hydraulic Mounted Breakers.

This publication is also available through Allied under part number 953076 (English). To order a copy, contact the Allied Customer Service Department.

## 2.0 Equipment Identification

### 2.1 Serial Number Location

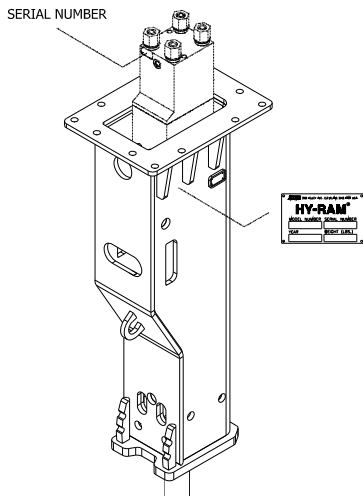


Fig 2-1 Equipment Identification

Refer to Figure 2-1. The Serial Number assigned to this equipment can be found in the following locations:

1. Stamped on the Equipment Identification Tag
2. Stamped on the back head near the N2 gas valve.

### 2.2 Equipment Identification Tag

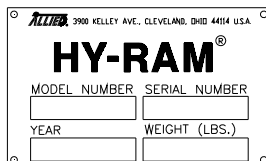


Fig 2-2 Equipment Identification Tag

The Equipment Identification Tag is affixed to the housing. It provides the following information:

- Manufacturer's name
- Address
- Product name
- Model number
- Serial number
- Year of manufacture
- Weight

Confirm that the information contained on the Tag corresponds with the information provided in Section 1, Table 1.1.

### 2.3 Owner's Record of the Equipment

Your local Allied dealer requires complete information about the equipment to better assist you with questions regarding parts, warranty, operation, maintenance, or repair.

- Record the equipment's serial number to the space provided below. This information may be obtained from the Equipment Identification Tag. Refer to Fig 2-1 for the location of the tag.
- Indicate the date in which the Allied equipment was placed into service.
- Indicate the date in which the Warranty Registration form was completed and returned to Allied.

Product Name: Hydraulic Breaker

Series: Hy-Ram

Model: HR330

Part Number: 575275

Serial Number: \_\_\_\_\_

In Service Date: \_\_\_\_\_

Registration Date: \_\_\_\_\_



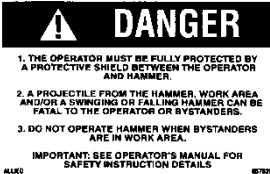
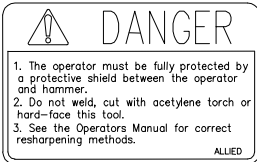

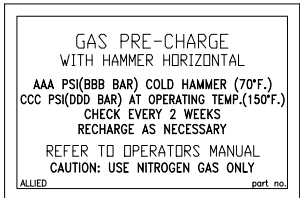
### 3.0 Safety, Identification & Information Labels

#### 3.1 Label Description and Location On Equipment

Labels affixed to the Allied equipment communicate important information. Safety warnings alert of potential hazards, while other labels provide equipment identification and instructions important to operation and service.

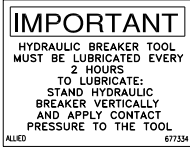




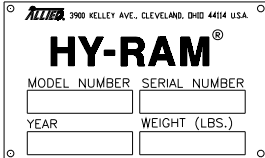
Keep safety labels clean. Words and illustrations must be legible. Replace damaged or missing labels before operating this equipment. Refer to Figure 3-15 for their placement on the equipment. The part numbers for labels are found in Table 3.2.

Table 3.1 Label Description

Fig.	Label	Description
3-1		<b>Read The Manual</b> - Safety Alert Symbol with pictogram of open book. Gives notice of the importance of reading the manual(s) for information and/or instructions.
3-2		<b>Keep Clear</b> - Pictogram displays arrow distancing worker safely from recognized hazard which is represented by the box. Breakers, or any other work tool, pose risk of injury to workers if they are not kept at a safe distance. Never operate the work tool with workers inside the work zone.
3-3		<b>Flying Debris Hazard</b> – Alerts personnel to the hazard of fragments becoming projectiles. A protective guard to shield the operator must be installed before operation of the breaker. Personnel are directed to the Operator's Manual for safety instructions. <b>NOTE: A smaller sized version of this decal is to be displayed in a conspicuous location inside the operator's cab.</b>
3-4		<b>Personal Protection Equipment / Tool Re-sharpening</b> – Alerts personnel to provide protective shielding between the operator and breaker. It also warns against welding, cutting, or hard-facing the tool. Personnel are directed to the Operator's Manual for approved re-sharpening methods.
3-5		<b>Pressurized Nitrogen Accumulator</b> – Alerts personnel to the presence of the accumulator, warning of nitrogen gas under pressure. Directs personnel to the Operation and Maintenance Manual for safe handling service instructions.
3-6		<b>GAS PRE-CHARGE</b> – Alerts personnel to the presence of gas under pressure inside the back head. Outlines measuring / charging procedures, including – <ul style="list-style-type: none"> <li>• Maintenance interval – every 2 weeks</li> <li>• Proper position when measured / charged</li> <li>• Charge pressure when COLD vs. HOT</li> <li>• Refers personnel to the Operation and Maintenance Manual</li> <li>• Caution alerts personnel to use nitrogen gas only</li> </ul>
3-7	<b>REMOVED</b>	

### 3.0 Safety, Identification & Information Labels

Table 3.1 Label Description – cont'd

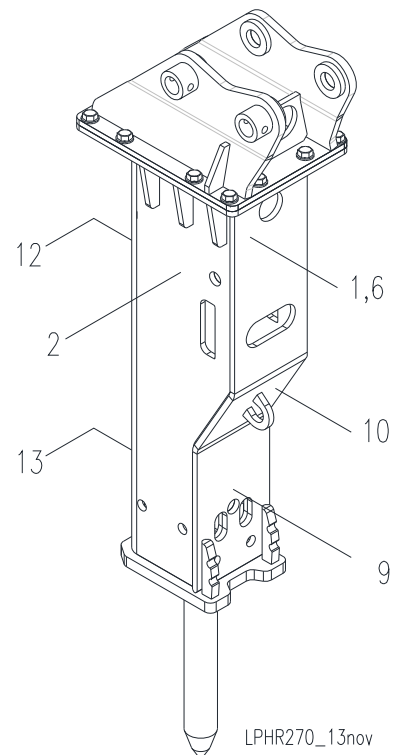
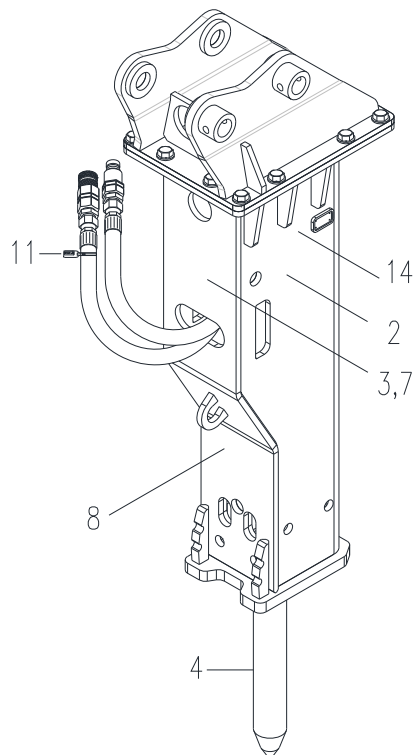
Fig.	Label	Description
3-8		<b>LUBRICATION</b> – Decal provides re-lubrication frequency. Risk of equipment damage through unapproved methods. Strict attention to all procedures must be followed. Stand breaker upright with contact pressure applied at tool. OK to lube.
3-9		<b>Lubrication Point</b> – Pictogram of instruction manual and grease gun is used to identify lubrication points. Read the manual(s) for application instructions, grease type and re-lubrication schedule.
3-10		<b>Lift Point</b> – Pictogram of hook identifies approved lift points for safe handling.
3-11		<b>OIL SUPPLY LINE “PRESSURE” I.D. TAG</b> – A red colored cable tie marked “PRESSURE LINE” is attached to the supply hose for ease of identification between hoses.
3-12		<b>ALLIED LOGO</b> – This decal is the Allied brand identifier and is a registered trademark of Allied Construction Products, LLC.
3-13	<b>HR330</b>	<b>MODEL</b> – Decal identifies the series and specific model.
3-14		<b>EQUIPMENT ID TAG</b> - Contains identifying information about the equipment, including: Manufacturer's name, address, product name, model number, serial number, year of manufacture, and weight.



### 3.0 Safety, Identification & Information Labels

Table 3.2 Label Set

Item	Description	Part No.	Qty	Remarks / Specifications
---	Label Set	575484	1 (Set)	Set includes Items 1 thru 11
1	Decal – Read Instructions	676984	1	
2	Decal – Stay Clear	840156	2	
3	Decal – Danger (Large)	657840	1	
---	Decal – Danger (Small)	657839	1	Display in conspicuous location inside cab
4	Decal – Tool Sharpening	657838	1	
5	---	---	---	
6	Decal – Back Head N2 Pressure	676896	1	
7	Removed	---	---	Use is Discontinued
8	Decal – Lube w/ Tool In	677334	1	
9	Lubrication Point	A101725	1	
10	Decal – Lift Point	676982	1	
11	Pressure ID Tag	818676	1	Identifies oil supply line [IN]
12	Decal – Allied	676655	1	
13	Decal – Model HR330	575494	1	
14	Equipment ID Plate	658833	1	Item 14 is not included in Set



LPHR270\_13nov

Fig. 3-13 Label Placement

4.1 Housing Box and Components

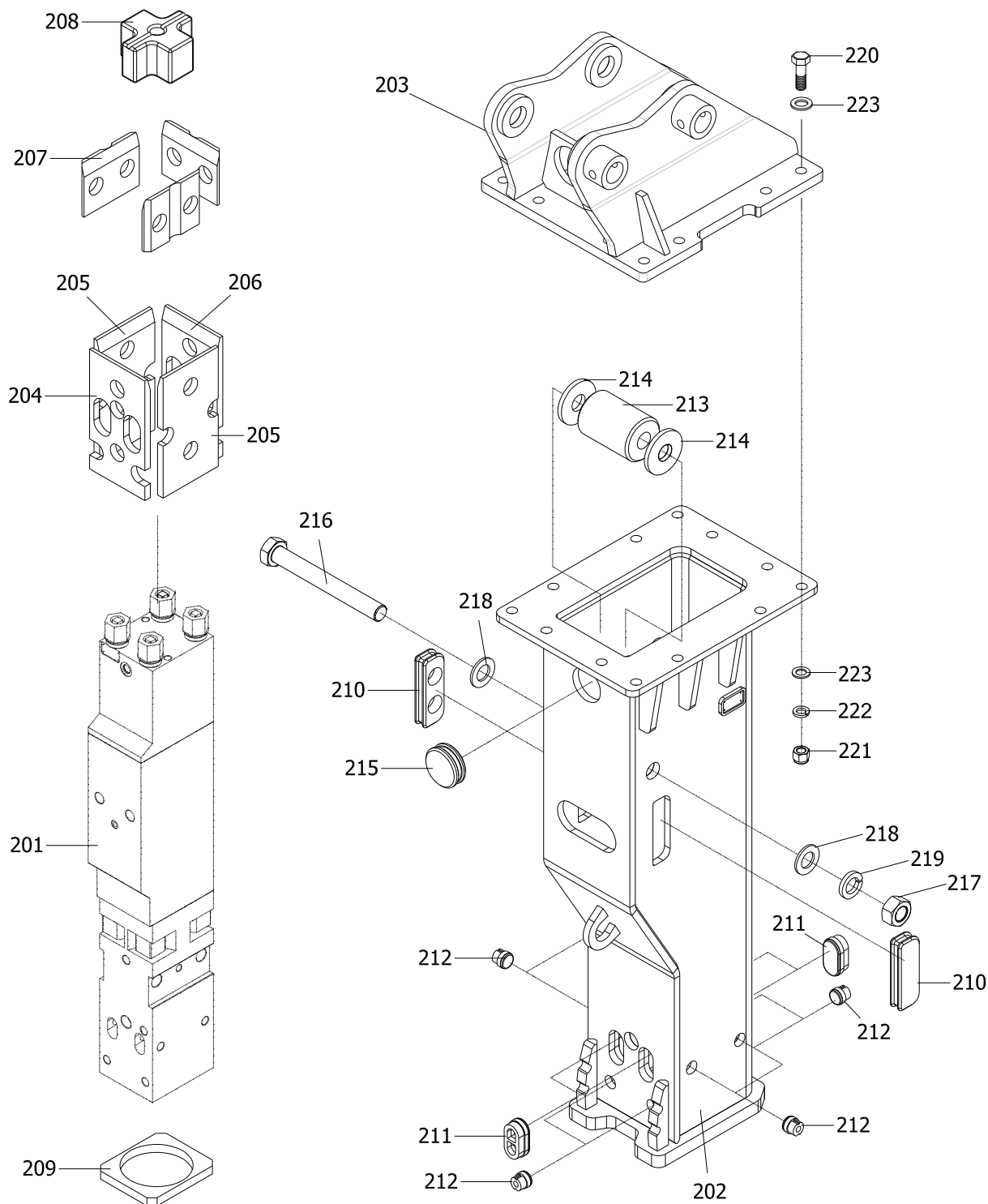


Fig. 4-1 Housing Box and Components

## 4.1 Breaker Assembly

Table 4.1 Spare Parts

<u>Item</u>	<u>Description</u>	<u>Part No.</u>	<u>Qty</u>	<u>Remarks / Specifications</u>
---	<b>HYRAM HR330</b>	<b>575275</b>	<b>1</b>	<b>Standard Configuration - SR</b>
201	Breaker Assembly	-	1	
202	Housing Box	575549	1	Standard Configuration - SR
203	Mounting Bracket - SR	Varies	---	Not Included. Order separately. Section 6
204	Wear Plate	A1004010	1	<sup>1)</sup> Dimension change – interchangeable old-to-new
205	Wear Plate	A1004020	2	<sup>1)</sup> Dimension change – interchangeable old-to-new
206	Wear Plate	A1004620	1	<sup>1)</sup> Dimension change – interchangeable old-to-new
207	Wear Plate	A1004040	3	<sup>1)</sup> Dimension change – interchangeable old-to-new
208	Top Buffer	A1006250	1	
209	Base Buffer	A1004050	1	
210	Side Rubber	A0602190	2	
211	Plug	A1201160	4	Rubber
212	Plug	A1201170	8	Rubber
213	Side Buffer	A1004070	1	
214	Side Buffer Washer	A1201310	2	
215	Front Rubber	A0602180	1	
216	Bolt	HB3640300	1	
217	Nut	574814	1	
218	Plane Washer	90521	2	
219	Spring Washer	573028	1	
220	Bolt	---	---	Items 220,221,222,223 Refer to Section 6
221	Nut	---	---	
222	Washer	---	---	
223	Washer	---	---	

<sup>1)</sup> Dimension change to wear plates – Full interchangeability old-to-new is preserved. Part numbers unchanged.

4.2 Breaker Assembly

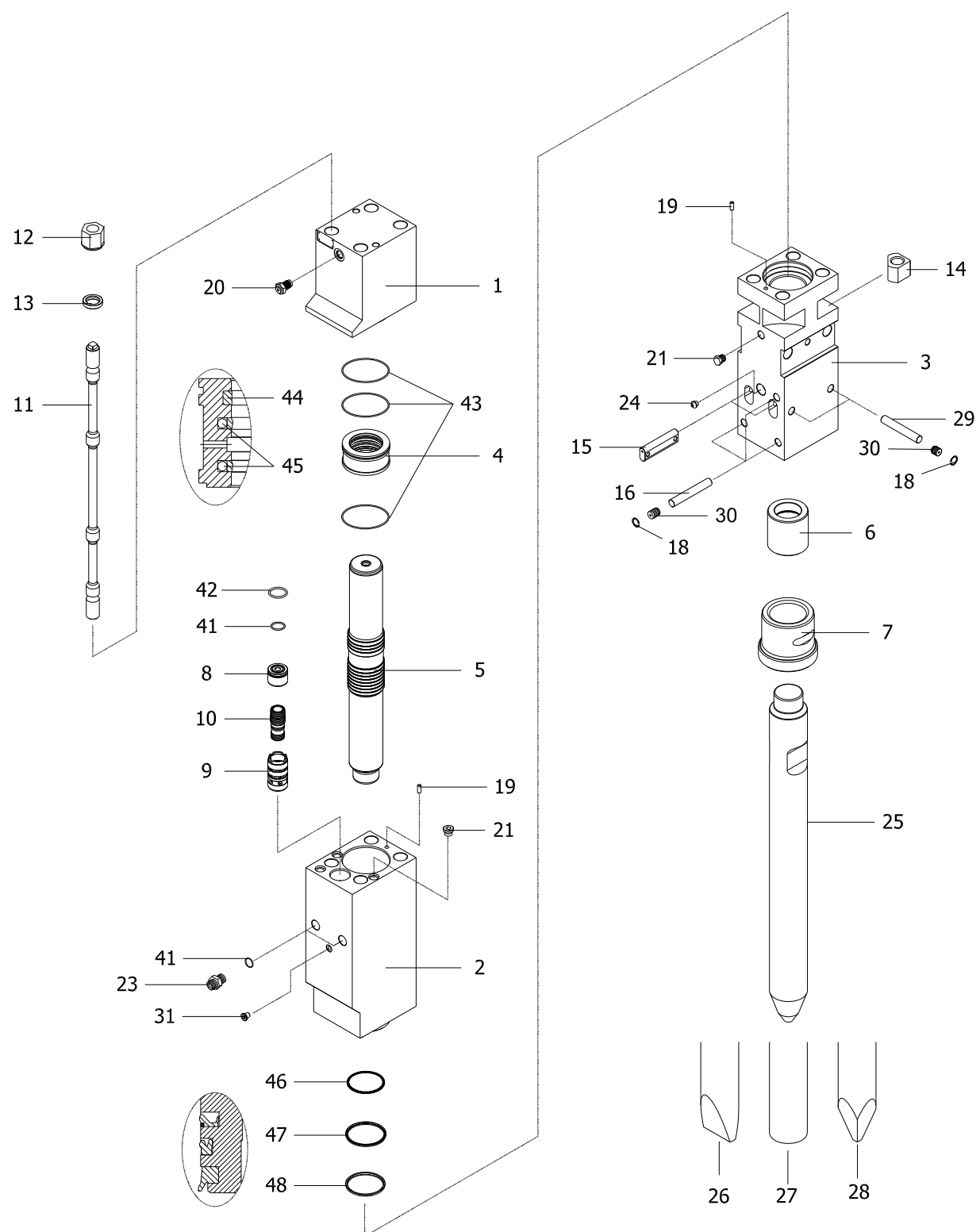


Fig. 4-2 Breaker Assembly

## 4.2 Breaker Assembly

Table 4.2 Spare Parts

<u>Item</u>	<u>Description</u>	<u>Part No.</u>	<u>Qty</u>	<u>Remarks / Specifications</u>
1	Back Head	A1006010	1	
2	Cylinder	A1006020	1	
3	Front Head	A1006030	1	
4	Seal Housing	A1006040	1	
5	Piston	A1006050	1	
6	Upper Bushing	A1006060	1	
7	Tool Bushing (Box)	A1006210-01	1	
8	Oper. Valve Plug	A1006080	1	
9	Oper. Valve Guide	A1006090	1	
10	Oper. Valve Spool	A1006100-01	1	
11	Side Rod	A1006110	4	
12	Side Rod Nut (Upper)	A1006120	4	
13	Side Rod Washer	A1006130	4	
14	Side Rod Nut (Lower)	A1006140	4	
15	Tool Pin	A1006150-01	2	
16	Bushing Pin	A1006160	3	
18	Snap Ring	B1006440	5	
19	Guide Pin	B4006370	2	
20	Gas Charging Valve	A3006590	1	
21	Socket Plug	B4006530	4	
23	Adapter	A1306320	2	
24	Grease Nipple	816675	1	
25	Tool Selection	Varies	1	Items 25,26,27,28 Refer to Section 4.5
29	Bushing Pin	A1006220	2	
30	Rubber Plug	676243	5	
31	Socket Plug	676159	1	
41	O-Ring	676204	3	
42	O-Ring	101781	1	
43	O-Ring	A1007010	3	
44	Gas Seal	A1007200	1	
45	Step Seal	A1007300	2	
46	Buffer Ring	A1007110	1	
47	U-Packing	A1007120	1	
49	Wiper	A1007130	1	

4.3 Hydraulic Connections

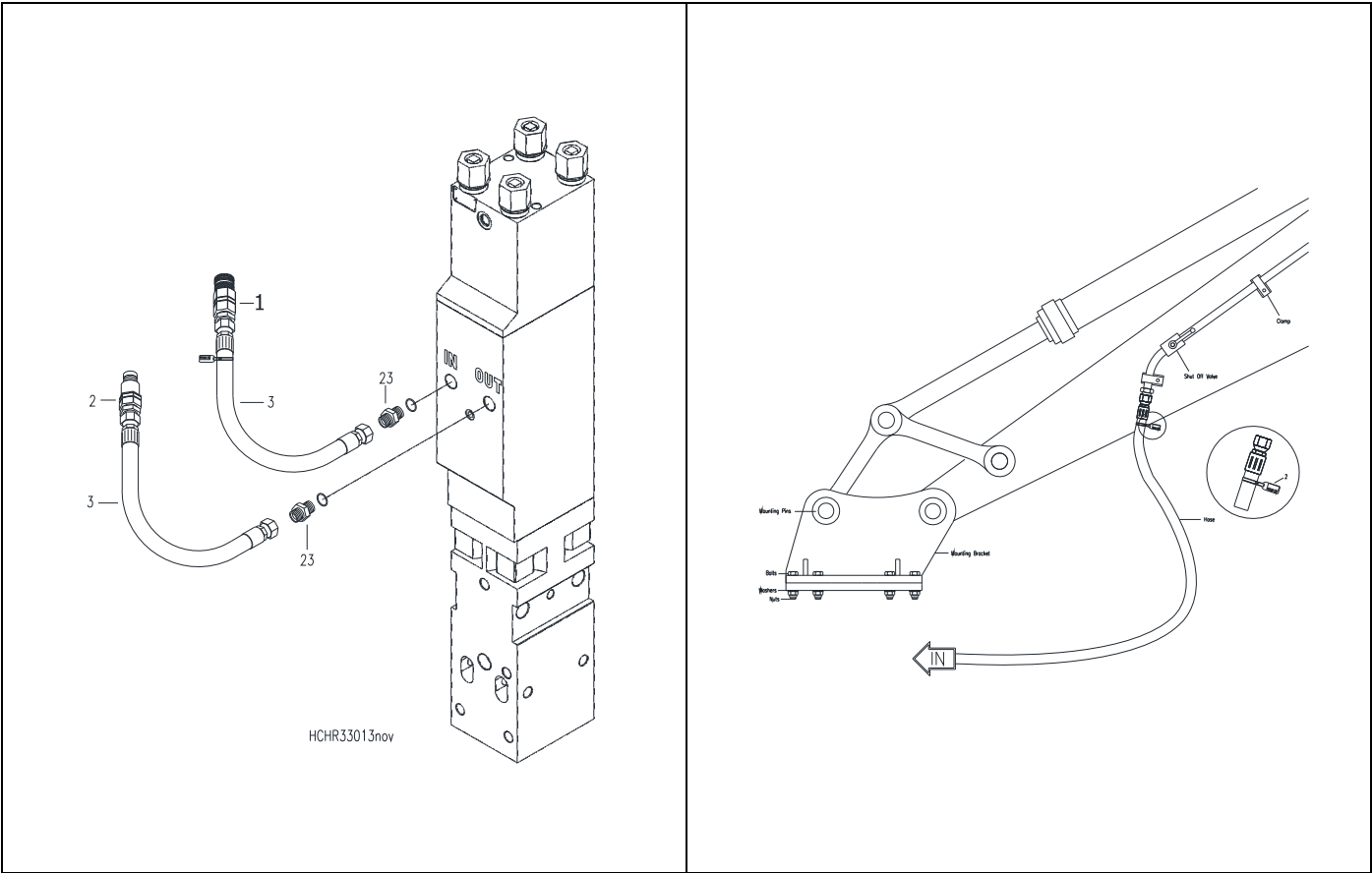


Fig. 4-3 Hydraulic Connections

Fig. 4-4 Carrier Connections - Typical

Table 4.3 Hydraulic Connections

Item	Description	Part No.	Qty	Remarks / Specifications
1	Quick Disconnect - Socket	101571	1	
2	Quick Disconnect - Plug	101570	1	
3	Hose	570368	2	
23	Adapter	667710	2	

## 4.4 Tools – Standard and Specialty

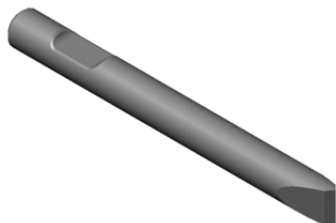
### 4.4.1 Standard Tools

The three most commonly used tool points for concrete demolition rock cutting and boulder reduction are the Chisel, Conical and Blunt.

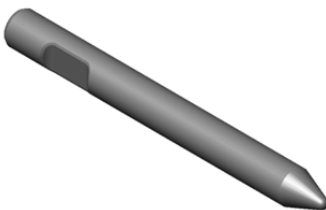
**A. Chisel (Wedge – Cross Cut or In-Line) –** Suitable applications include soft rock and general demolition of concrete. The tool penetrates into the material, forcing it to separate. Useful when cutting action is required, e.g. benching and trenching.

**B. Conical Point** - The conical point penetrates the material and its shape makes it less prone to twisting which can lead to burring of the tool's retainer pin.

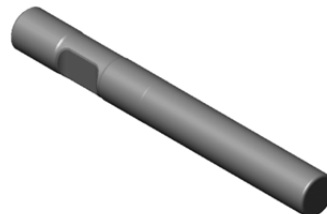
**C. Blunt Tool** – Designed for impact breaking. The blunt tool is effective in secondary breaking of oversize rock or boulder reduction.



A



B



C

Fig. 4-5 Standard Tool Types A thru C.

### 4.4.2 Specialty Tools

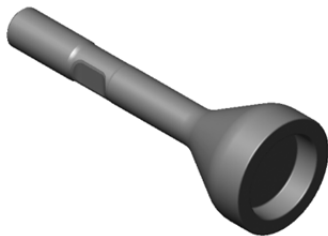
Specialty tools have a specific purpose or function designed into each tool. These tools can extend the versatility of a breaker, thus increasing productivity and eliminating the need for additional equipment. For availability of tool types not listed, contact Allied.

**D. Post Driver** – For driving posts, pipes, etc.

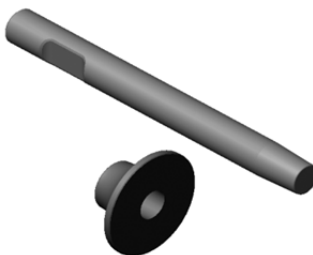
**E. Tamper** – Designed to compact loose material.

**F. Frost Cutter** – For cutting into frozen ground.

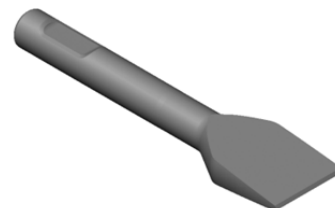
**G. Asphalt Cutter** – Designed to cut seams in asphalt for removal. Useful when removing asphalt to dig a trench. Available in Cross-Cut and In-Line configurations.



D\*



E\*



F\* & G\*

Fig 4-6 Specialty Tool Types D thru G.

General illustrations are shown. Actual tool design may vary.

\*Not available for all models.

## 4.4 Tools – Standard and Specialty

Table 4.4

Item	Description	Part No.	TD <sup>3</sup> in. [mm] x WL <sup>4</sup> in. [mm]	Weight lbs. [kg.]
25-B	Conical Point	575385	3.35 [85] x 21 [533]	79 [36]
<b>25-A<sup>1</sup></b>	<b>Chisel Cross Cut</b>	<b>575265</b>	<b>3.35 [85] x 21 [533]</b>	<b>79 [36]</b>
---	Chisel In-Line	--- <sup>2</sup>	---	---
25-C	Blunt End	575395	3.35 [85] x 19 [488]	79 [36]
25 <sup>2</sup>	Pyramid (Not Pictured)	--- <sup>2</sup>	3.35 [85] x 21 [533]	79 [36]

<sup>1</sup>) Standard tool supplied with breaker

<sup>2</sup>) For availability of tool types not listed, contact Allied

<sup>3</sup>) TD - Tool Diameter

<sup>4</sup>) WL - Working Length

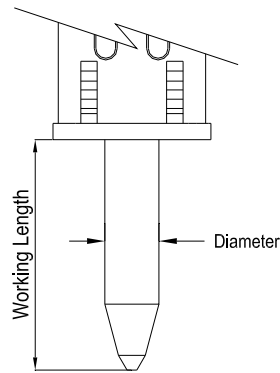


Fig. 4-6 TD &amp; WL

## 4.5 Lubricant For Bushing and Tool

### 4.5.1 Allied Chisel Paste

Wear costs money, sometimes lots of money. Without lubrication to prevent metal-to-metal contact, bushings and tools will quickly wear from friction related damage.

A key element in managing wear of the bushing and tool is through the regular use of a high-quality lubricant. Formulated as a 'specialty' lubricant, Allied Chisel Paste is ideally suited for use in applications requiring long-lasting protection against damage from heavy loaded, sliding motion and high heat.

Allied Chisel Paste performs exceptionally well in this application due to its 'unique blend' of liquid and dry film lubricants. Dry film lubricants, which include solids of molybdenum, graphite and copper, combine to form a highly effective layer that resists being squeezed out during periods of heavy loading (extreme pressure).

Grease labeled 'General / Multi-Purpose' will typically contain only modest amounts of solid lubricants or

none at all. When the tool is loaded against the bushing, the liquid lubricant is squeezed out, leaving metal surfaces unprotected.

### 4.5.2 Chisel Paste Ordering Information

Table 4.5 Chisel Paste

Container	Packaging	Part No.
14.5 oz. Cartridge*	Qty x 10	574430
14.5 oz. Cartridge*	Qty x 30	574431
35 lbs. Bucket	Qty x 1	676698
120 lbs. Drum	Qty x 1	679968

\* 14 oz. cartridge fits standard grease gun



## 5.0 Service Kits and Tools

### 5.1 Tune-up Kit

All breakers require regular maintenance and periodic parts replacement. Follow the recommended service schedule to maintain reliable service.

Tune-up kits can help restore performance by replacing common wear parts. Tune-up kits offer the convenience of combining parts that usually need to be replaced at the same time into a single package.

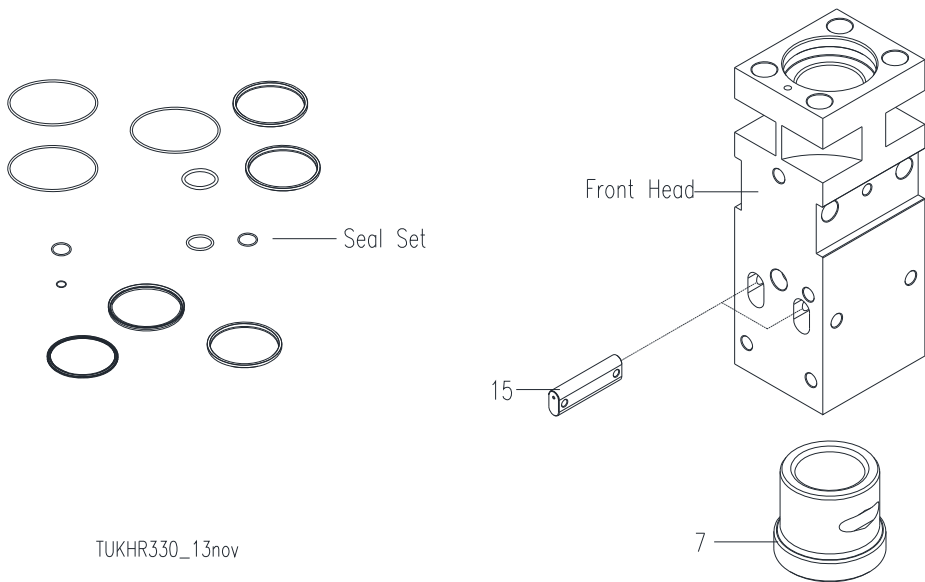


Fig. 5-1 Tune-up Kit

Table 5.1 Tune-up Kit

Item	Description	Part No.	Qty	Remarks / Specifications
---	<b>Tune-up Kit</b>	<b>575406</b>	<b>1</b>	<b>Kit includes all items in Table 4.4</b>
---	Seal Set	575416	1	
7	Tool Bushing	A1006210-01	1	
15	Tool Pin	A1006150-01	2	

5.2 Seal Kit

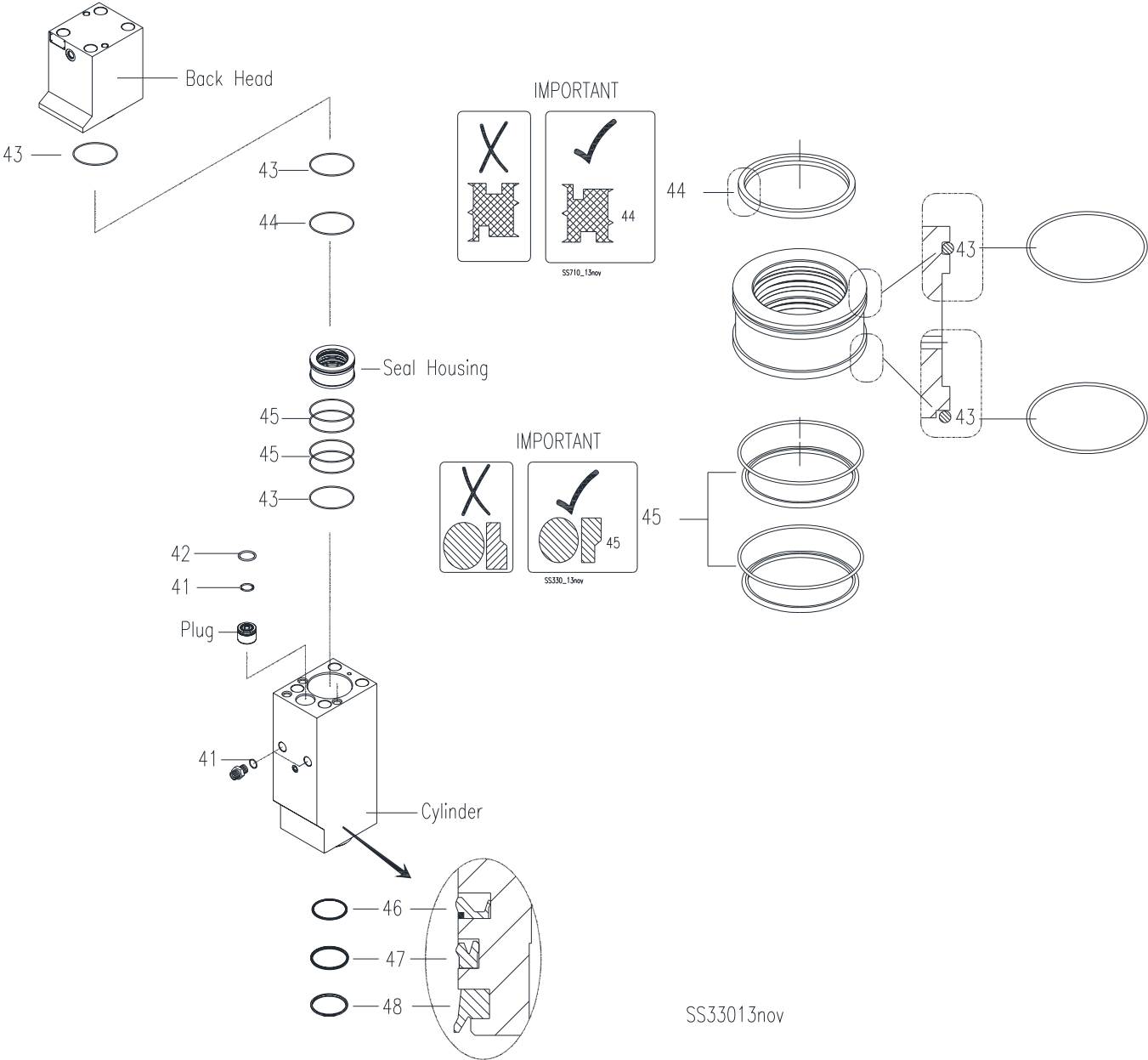


Fig. 5-2 Seal Positions

  **Follow Assembly Instructions**

## 5.2 Seal Kit

Table 5.2 Seal Set

Item	Description	Part No.	Qty	Remarks / Specifications
---	<b>Seal Set</b>	<b>575416</b>	<b>1 (Set)</b>	<b>Set includes Items 41 thru 47, 49 &amp; thread lube</b>
41	O-Ring	676204	3	
42	O-Ring	101781	1	
43	O-Ring	A1007010	3	
44	Gas Seal	A1007200	1	
45	Step Seal	A1007300	2 (set)	Set includes O-ring & Step Seal (each 1x)
46	Buffer Ring	A1007110	1	
47	U-Packing	A1007120	1	
49	Wiper	A1007130	1	
---	Thread Lube	676927	1	Follow application instructions

### IMPORTANT

Contamination interferes with reliable operation and will shorten component life. Prevent dirt and debris from entering the hydraulic system. Always work in a clean area. Keep seals properly stored in their original, sealed package until ready for use.

### IMPORTANT

Apply thread lube included in seal set to threads of side rods at assembly. *DO NOT apply Thread Lube to seals!*

## 5.0 Service Kits and Tools

### 5.3 N2 Gas Charge Tool - General Description

Designed for use with all Hy-Ram models, the charge kit adapts to both the back head and accumulator<sup>1)</sup>. Periodic checking of the back head pressure will detect whether it is sufficiently charged. Proper function of the breaker is accomplished through accurate charging.

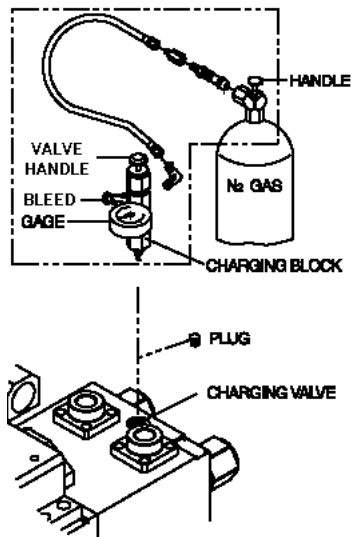


Fig. 5-3 N2 Charge Pressure - Back Head

The accumulator<sup>1)</sup> is a self-contained pressure vessel with an elastic membrane dividing the inner chamber. The lower chamber is used to receive, store and discharge pressurized oil. Pressurized gas is stored in the upper chamber. Reliable operation of the breaker along with optimal membrane life is accomplished through proper filling of the charge pressure.

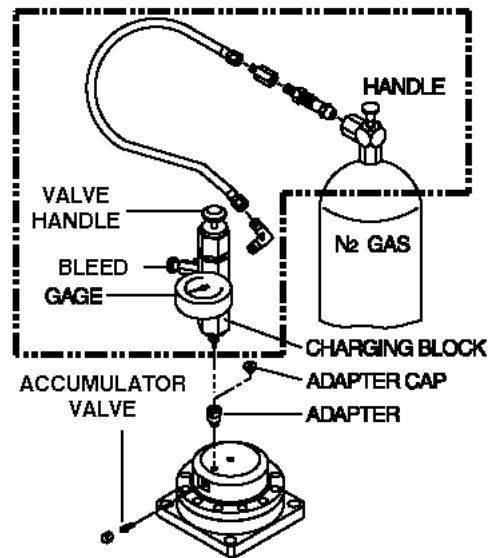


Fig. 5-4 N2 Charge Pressure - Accumulator<sup>1)</sup>

Table 5.3 N2 Gas Charge Tool

Item	Description	Part No.	Qty	Remarks / Specifications
1	<b>N2 Gas Charge Kit</b>	<b>575427</b>	<b>1-Kit</b>	<b>Kit includes items 2,3,4,5</b>
2	Charge Valve with Gauge	---	1	"Charging Block"
3	Extension	---	1	"Adapter"
4	Hose	---	1	
5	Adapter - Gas Bottle	---	1	
6	Gas Bottle - Nitrogen Gas N2	Not Available	---	Source Locally



For your safety, read, understand and follow all instructions given in Operation & Maintenance Manual 575582 for the safe and proper use of this tool.

<sup>1)</sup> Not all Hy-Ram models are equipped with an accumulator

## 6.0 Mounting Information

### 6.1 Mounting Bracket – Option

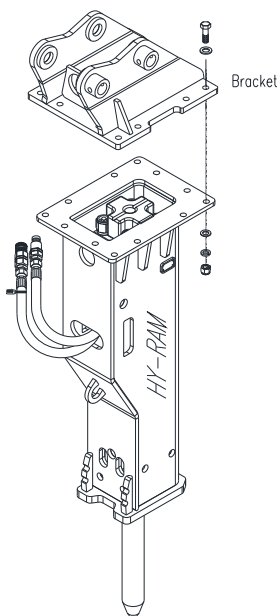


Fig. 6-1 Housing Box, Mounting Bracket & Bolt Set

Hy-Ram series breakers come without mounting. Allied offers an array of mounting brackets to fit virtually any carrier, including those equipped with pin-grab or hook style mounting couplers.

To order a mounting bracket, complete information about the carrier (and coupler) is required: including the make, model, series and serial number.

### 6.2 Connection Plate

The mounting bracket is bolted to the connection plate located at the upper end of the housing box. Dimensions of the connection plate, including thickness, spacing, quantity and diameter of the bolt holes, will vary between small, medium and large size breakers. Dimensions for the connection plate can be found in Operation & Maintenance Manual.

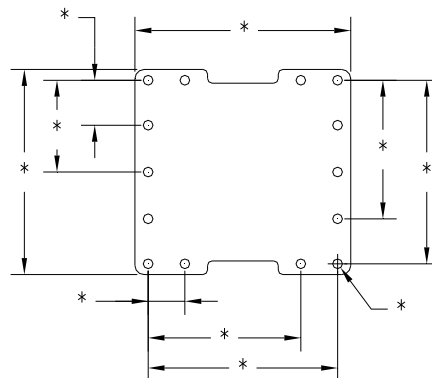


Fig. 6-2 Connection Plate – Dimensions Vary

In Table 6.1, 'Family' identifies the connection plate that's been appointed to the standard housing box. Other work tools from Allied, including the Ho-Pac®, share the same Family types.

Table 6.1 Mounting Family & Hardware (QTY)

<u>Family</u>	<u>Model</u>	<u>Bolt</u>	<u>FL Washer</u>	<u>LK Washer</u>	<u>Nut</u>
XR	HR175	575555 (7)	667628 (7)	100088 (7)	575652 (7)
XR	HR230	901382 (7)	667628 (7)	100088 (7)	575652 (7)
BR	HR270	577485 (12)	921825 (24)	056245 (12)	90548 (12)
BR	HR290	577485 (12)	921825 (24)	056245 (12)	90548 (12)
SR	HR330	575556 (12)	798064 (24)	100088 (12)	575652 (12)
SR	HR390	951390 (12)	798064 (24)	100088 (12)	575652 (12)
MR	HR470	575557 (12)	901291 (24)	658529 (12)	90507 (12)
MR	HR560	575557 (12)	901291 (24)	658529 (12)	90507 (12)
LR9	HR600	90520 (12)	573029 (24)	573028 (12)	90519 (12)
LR10	HR710	573167 (12)	573029 (24)	573028 (12)	90519 (12)



Always follow the recommended tightening torque of all fasteners. These can be found in the Operation and Maintenance Manual 575469.

## 7.0 How To Order Spare Parts

Your local Allied dealer requires the Product Name, Model and Serial Number to better assist you with questions regarding parts, warranty, operation, maintenance, or repair. This information should be noted in Section 2.3 of this manual.

Product Hy-Ram Series Breaker  
 Model HR330  
 Serial No. \_\_\_\_\_

Please fill out completely

Line	Description	Part Number	Quantity	Price
1				
2				
3				
4				
5				
6				
7				
8				
9				
10				

Your contact information

Your Name _____	Company Name _____
Phone _____	Account Number _____
Fax _____	Purchase order _____
Email _____	Shipping carrier _____

\*See note below

Billing Address _____	Shipping Address _____
_____	_____
_____	_____
_____	_____

**\*Note: All backordered parts will be shipped when available via the same method as the original order unless initialed and checked below:**

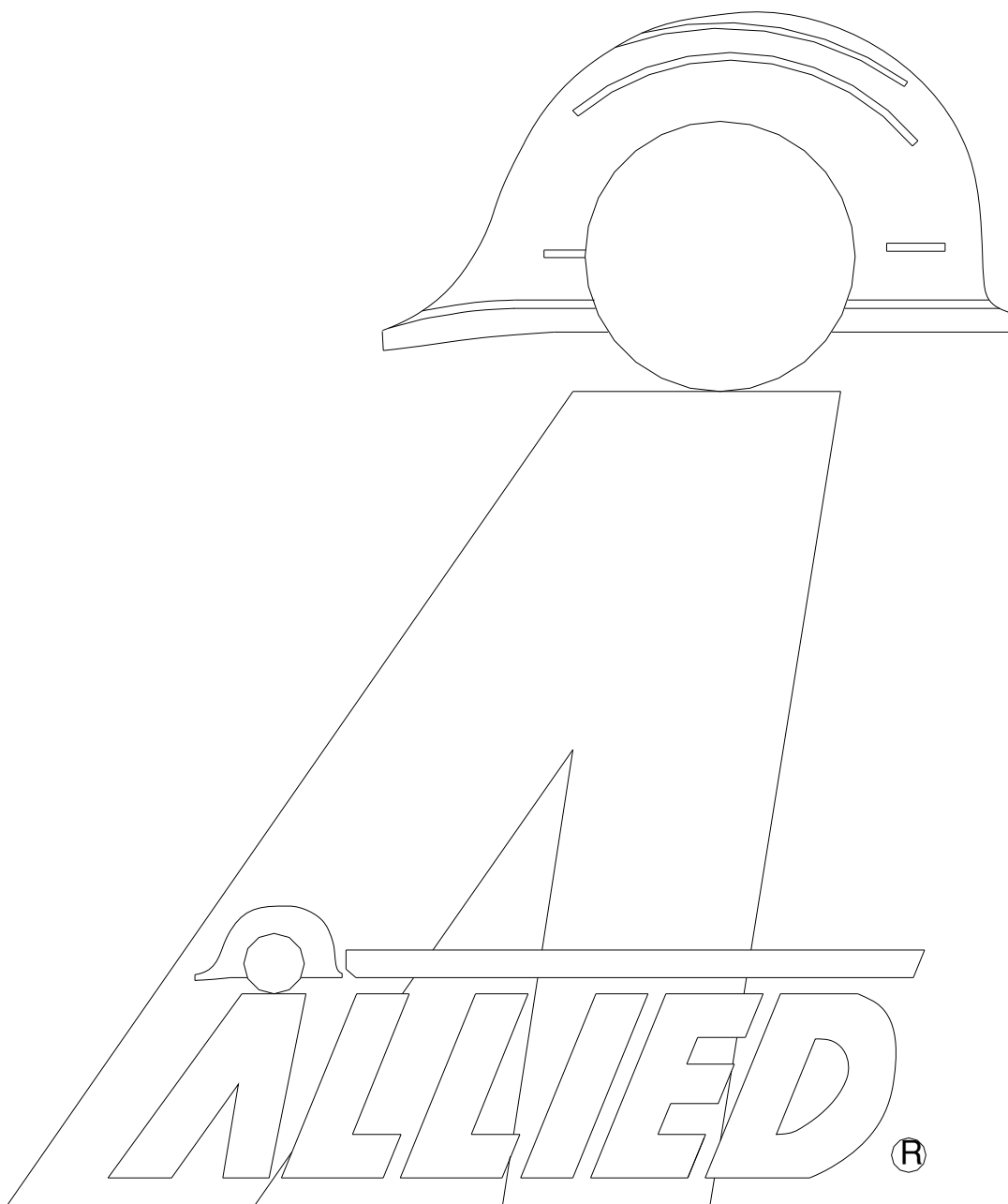
Initials \_\_\_\_\_

- ☐ Ship complete order only  
☐ Ship available parts and contact customer on disposition of backordered parts  
☐ Other – specify below

\_\_\_\_\_  
 \_\_\_\_\_  
 \_\_\_\_\_

## NOTES

This image shows a single sheet of white paper with horizontal ruling lines. The lines are evenly spaced and run across the width of the page. There are no margins, text, or other markings on the paper.



3900 Kelley Avenue, Cleveland, Ohio 44114  
Tel: 216-431-2600 Fax: 216-431-2601  
e-mail: [Sales@AlliedCP.com](mailto:Sales@AlliedCP.com)  
website: <http://www.AlliedCP.com>