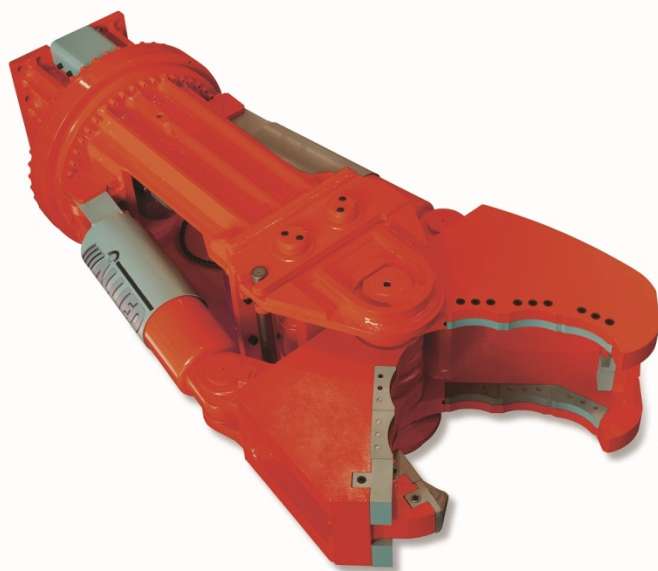




Multi-Processor
MP985R – S Jaw



Multi-Processor
MP985R – D Jaw



Parts Manual – MP 985R

Keep this manual in a convenient location so that it is easily accessible for future reference. Contact your Allied Dealer or the Allied Customer Service Department for replacement manuals.



PM577431

Inquiries regarding this manual must include rev date shown on inside cover



Contact Information

3900 Kelley Ave

Cleveland, Ohio 44114

Tel: 216-431-2600

www.alliedcp.com

Fax: 216-431-2601

E-mail: sales@alliedcp.com

Continuous improvement of our products is an Allied policy. The material in this publication, including figures, captions, descriptions, remarks and specifications, describe the product at the time of its printing, and may not reflect the product in the future. When changes become necessary, these will be noted in the table below. Specifications are based on published information at the time of publication. Allied Construction Products, LLC, reserves the right to change, edit, delete or modify the content of this document, including descriptions, illustrations and specifications without prior notification. For product or document updates go to www.alliedcp.com.

Table of Revision History for Parts Manual 577431

<u>Effective Date</u>	<u>Page</u>	<u>Summary of Change</u>
2014, Jun	All	Original issue of 577431

Table of Contents

<u>Section</u>	<u>Page</u>
Document Revisions.....	i
Table of Contents.....	ii
List of Figures.....	ii
1.0 Introduction & Scope.....	1
1.1 Purpose of This Manual.....	1
1.2 How To Order Replacement Manuals.....	1
1.3 Related Publications.....	1
2.0 Equipment Identification.....	2
2.1 Serial Number Location.....	2
2.2 Equipment Identification Label.....	2
2.3 Owner's Record of the Equipment.....	2
3.0 Safety, Identification & Information Labels	3
4.0 Spare Parts Lists.....	6
5.0 How to Order Spare Parts.....	20
<u>List of Figures</u>	<u>Page</u>
2-1 Equipment Identification.....	2
2-2 Equipment Identification Label.....	2
L1 thru L12 Safety & Information Labels.....	3
S3 Location of Labels On Equipment.....	4
P1 thru P8 Meaning Of Pictograms	4
4-A Main Components & Scope of Delivery	5
4-1 Body, Top, Cylinders & Motor	6
4-2 Coupler Assembly with Demolition Jaw	8
4-3 Coupler Assembly with Shear Jaw	8
4-4 Main Cylinder Assembly – Seals, Packing	10
4-5 Rotation Motor, Center-Jaw-Joint	12
4-6A Hoses at Main Cylinder – Speed Valve	14
4-6B Hoses at Cap and Speed Valve	15
4-7 Connecting Cylinders Assembly	17
4-8 Blade Kit – Demo Jaw	19

<u>List of Tables</u>	<u>Page</u>
1.1 About This Manual.....	1
S.1 Ordering Information For Labels.....	3
4.1 Main Components & Scope of Delivery	5
4.2 Spare Parts Lists	7

1.0 Introduction and Scope

1.1 Purpose and Scope of This Manual

The material in this manual has been prepared in support of the product named in Table 1.1. It's intended solely for use with the expressed model(s) and may not be suitable for unnamed models.

The publication identified in Table 1.1 was created solely for information purposes and should not be considered all-inclusive. If further information is required, contact your local Allied dealer or the Allied Customer Service Department.

Parts Manuals do not include safety precautions or operating procedures. Figures depict views that are intended for parts identification and not for purposes of repair or service of the product. Figures, captions, descriptions and tables, presented in this manual, may show equipment that is optional.

How to use this Manual:

Assembly components are identified with the aid of figures, captions, item key, part name and quantity. When necessary, remarks and specifications further enhance the description of the part or clarify its use (or non-use) with select serial numbers.

To assist you, a parts order form is provided at the back of this manual

Prior to ordering parts, confirm that the information recorded on the equipment's identification label corresponds with Table 1.1. For the location of this label, refer to Section 2.0 of this manual.

Table 1.1 About This Manual



Document ID.	PM577431
Category	Spare / Replacement Parts
Current Status	See Inside Cover
Product Name:	Multi-Processor
Applicable Model[s]:	MP 985R
Years of Manufacture:	Begin 2014
Inquiries regarding this manual must include the effective date shown on inside cover	

The content of this document has been reviewed for accuracy. Allied Construction Products, LLC has endeavored to deliver the highest degree of accuracy

possible and has made every effort to provide information as complete as possible for this document. However, continuous improvement of our products is an Allied policy. The material in this publication, including descriptions, illustrations and specifications, describes the product at the time of its printing, and may not reflect the product in the future. Changes made to the manual's content are noted on the inside cover.

1.2 How To Order Replacement Publications

This manual is an integral part of this product. Keep it in a convenient location so that it is easily accessible for future reference.

Replacement manuals may be ordered by contacting your Allied dealer service center. These manuals may also be viewed and downloaded at: www.alliedcp.com

1.3 Related Publications

Allied Construction Products, LLC offers the following publications for the product identified in Table 1.1.

Safety, Operation & Maintenance Manual 577430

For use with Models MP 985R

Safety, Operation & Maintenance Manuals are prepared to assist the operator and maintenance personnel with the information necessary for the safe and proper use of the Allied equipment.

Content included in the Safety, Operation & Maintenance Manual:

- Safety Information
- Equipment Identification
- Installation and Set-up
- Pre-Operation Inspection
- How to Operate the Equipment
- Maintenance Schedule
- Lubrication
- Basic Troubleshooting Guidelines
- Transporting, Removal, Lifting, & Storage
- Technical Data (Weight & dimensions)

2.0 Equipment Identification

2.1 Serial Number Location

Insert Fig.

Fig 2-1 Equipment Identification

Refer to Figure 2-1. The Serial Number assigned to this equipment is found in the following locations:

1. The Equipment Identification Label
2. Stamped on the guard.

2.2 Equipment Identification Tag


 1800 Kelley Avenue Cleveland OH 44114 USA CE			
MOBILE SHEAR			
MODEL NUMBER	AMESO	SERIAL NUMBER	85000
YEAR	2012	WEIGHT LBS.	13825
ROTATION		OPEN / CLOSE	
FLOW (GPM)		FLOW (GPM)	
PRESSURE (PSI)		PRESSURE (PSI)	
845001		www.alliedcp.com	

Fig 2-2 Equipment Identification Label

The Equipment Identification Tag is affixed to the housing. It provides the following information:

- Allied name
- Address
- Product name
- Model number
- Serial number
- Year of manufacture
- Weight

Confirm that the information contained on the Tag corresponds with the information provided in Section 1, Table 1.1.

2.3 Owner's Record of the Equipment

Your local Allied dealer requires complete information about the equipment to better assist you with questions regarding parts, warranty, operation, maintenance, or repair.

- Record the equipment's serial number to the space provided below. This information may be obtained from the Equipment Identification Tag. Refer to Fig 2-1 for the location of the tag.
- Indicate the date in which the Allied equipment was placed into service.
- Indicate the date in which the Warranty Registration form was completed and returned to Allied.

Product Name: **Multi Processor**

Series: **MP**

Model / Part No. **MP 985R / 577072**

Serial Number: _____

In Service Date: _____

Registration Date: _____

Model MP 985R

MP	Multi-Processor
985	
R	Rotation
S	Shear Jaw
D	Demolition Jaw

3.0 Safety, Identification and Information Labels

Safety, Identification and Information Labels

Information labels affixed to the Allied equipment include safety warnings, identification and instructions important to operation and service.

Keep all safety labels clean. Words and illustrations must be legible. Before operating this equipment, replace damaged or missing labels. Refer to Table S.1 for ordering information. Refer to Figure “S-3” for their position on the equipment.

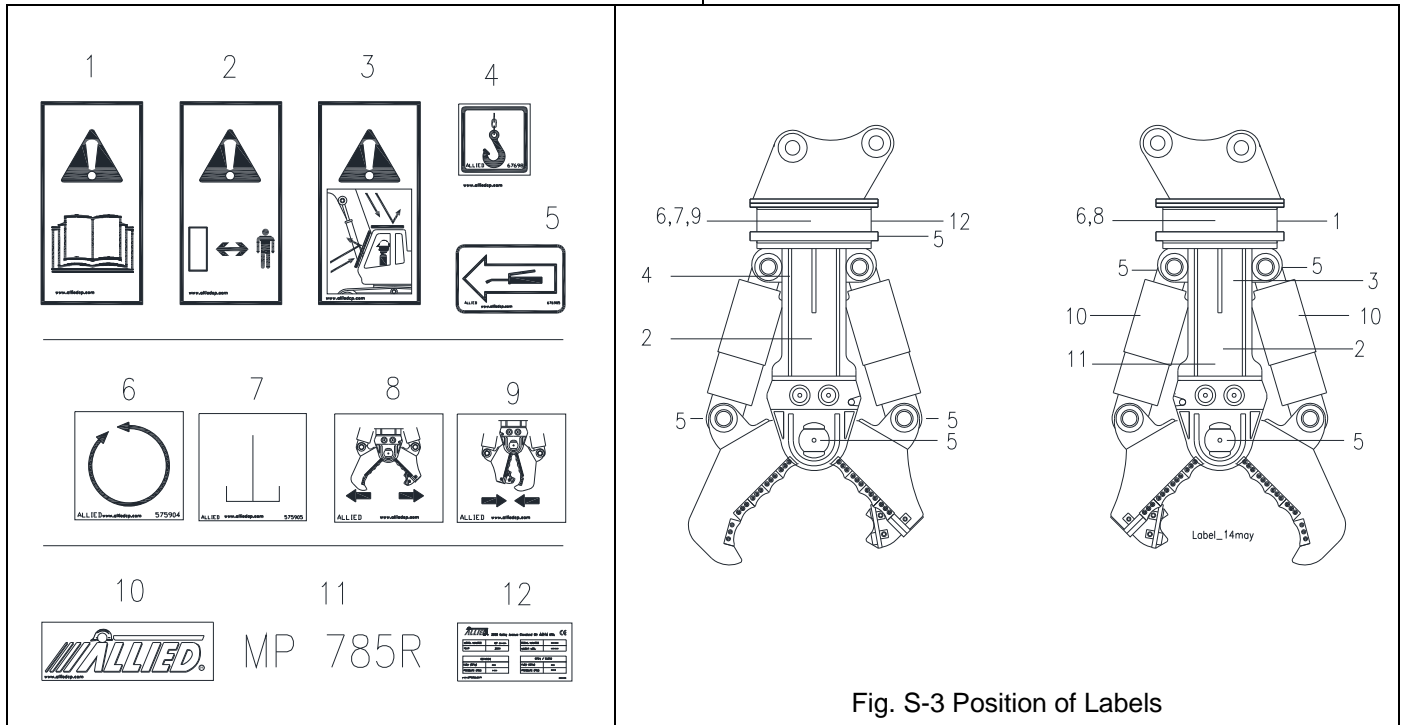


Fig. S-3 Position of Labels


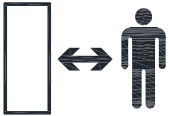
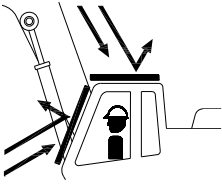


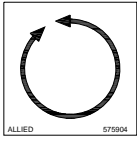
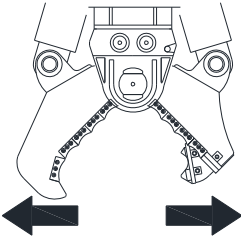
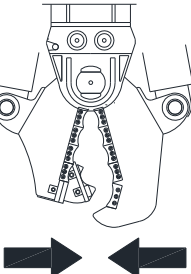
Table S.1 Labels – Ordering Information

Item	Description	Part No.	Qty	Remarks / Specifications
---	Decal Set	577428	1-Set	Set includes 1-11
L1	Label - Read Instructions / Manual	676984	2	
L2	Label - Stay Clear	840156	2	
L3	Label - Guards	575948	1	
L4	Label - Lift Point	676982	8	
L5	Label – Lube Point	A101725	10	
L6	Label – Rotation	575904	2	
L7	Label – Drain	575905	2	
L8	Label – Jaw Open	577433	1	
L9	Label – Jaw Close	577432	1	
L10	Label - Allied Logo	676655	2	
L11	Label – Model MP 985R	577339	1	
L12	Label – Equipment ID	577338	1	Item L12 Not included in set

3.0 Safety, Identification and Information Labels

Meaning of Pictograms

Pictograms are used to rapidly communicate information. For the purposes of this manual and labels affixed to the Allied equipment, pictograms are defined as follows:

P1		Read / Refer to the manual for information
P2		Stay clear Maintain a safe distance
P3		Fragments / debris that become airborne projectiles. Protective guards are required on cab when operating this work tool
P4		Identifies Lift Point
P5		Identifies Lubrication Point
P6		Identifies Oil Port for Rotation
P7		Identifies Oil Port for Jaw Open
P8		Identifies Oil Port for Jaw Close

4.0 Spare Parts – Scope of Delivery

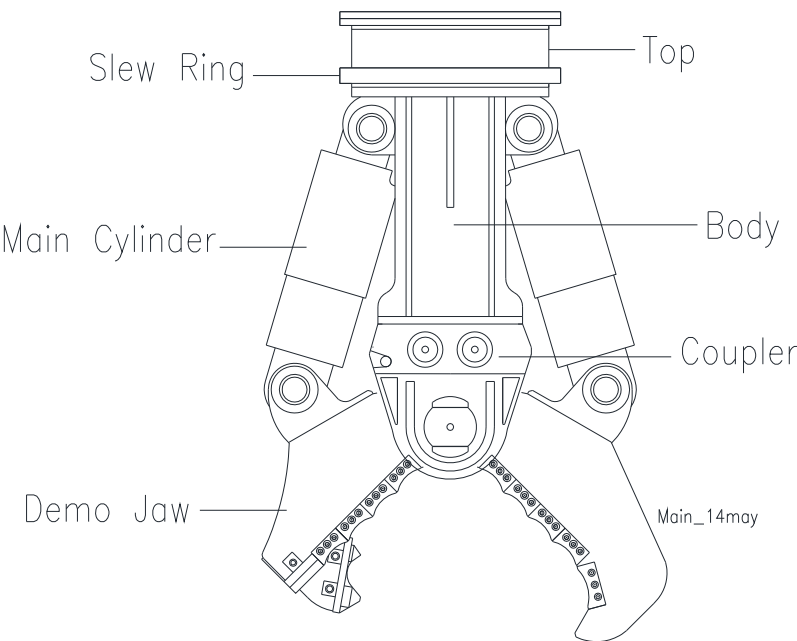


Fig. 4-A

Figure	Name	Scope of Delivery - Standard
4-A	MP Processor Model 985R	Standard delivery is complete with:
4-1	Body	Assembled, tested, painted & decaled ✓
4-1	Top	Safety, Operation & Maintenance Manual ✓
4-1	Slew Ring	Parts Manual ✓
4-1, 4	Main Cylinders	Bolt Set for Mounting Bracket ✓
4-2, 3	Coupler	
4-2, 3	D-Jaw or S-Jaw	
		Optional Accessories
		*Order separately
		<u>Hoses</u> *
		Jaw Close (P) *
		Jaw Open (T) *
		Rotation (R) *
		Drain (D) *
		Mounting Bracket *
		Jaw Fixture Stands *

4.1 Spare Parts List – MP 985R

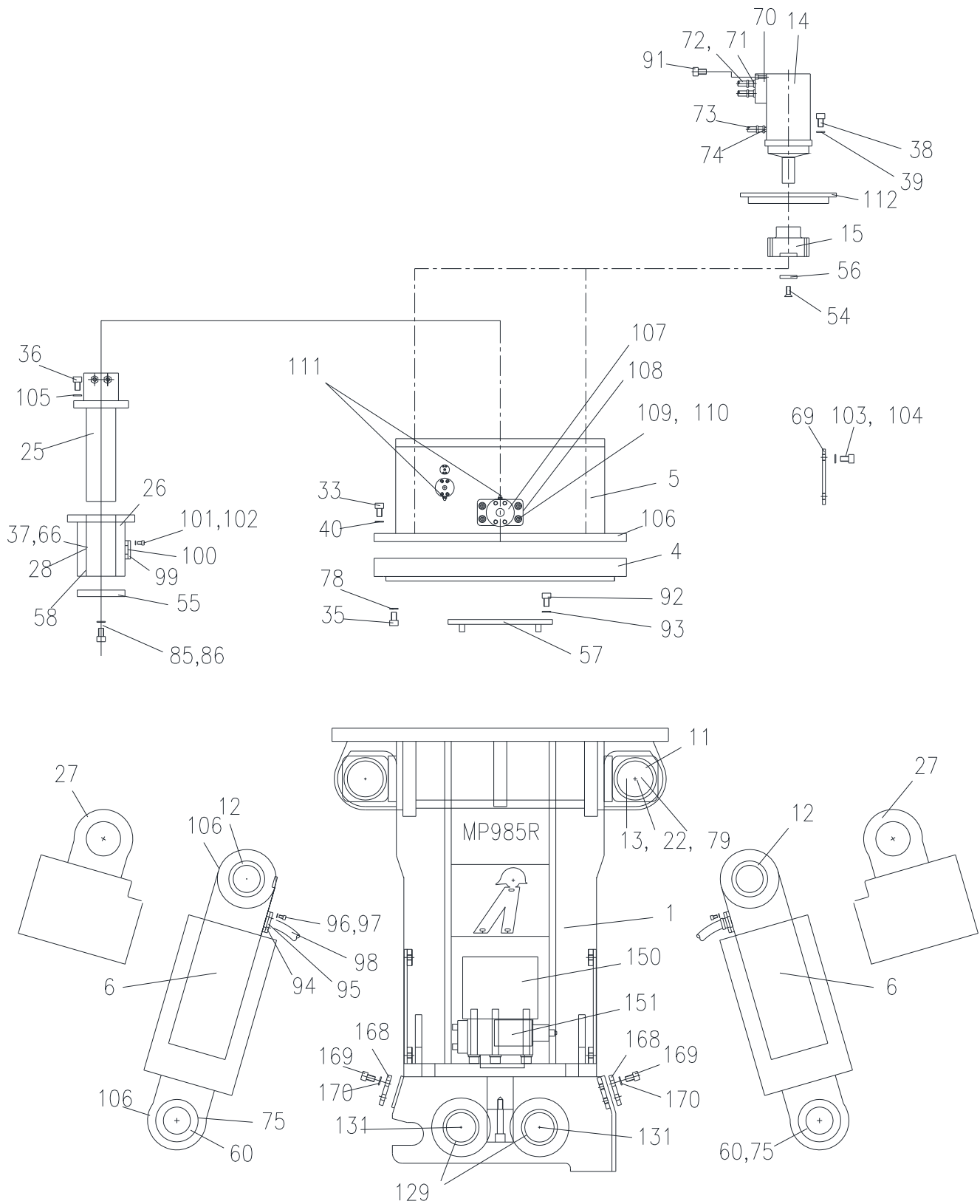


Fig. 4-1 Body, Top, Cylinders, Motor

4.1 Spare Parts List – MP985R

Fig	Pos	Name	Part No.	Specification / Notes	Qty
4-A	---	Processor MP 985R w/ Jaw-D	577072	Standard As Delivered	---
4-1	1	Body	MP4300100		1
4-2	2	Crusher Jaw-L	MP4300200		1
4-2	3	Crusher Jaw-R	MP4300300		1
4-1	4	Slew-Ring	MP4300400		1
4-1	5	Top	MP4300500		1
4-1	6	Main Cylinder	MP4300600		2
4-2	7	Spike-C	MP4300700		1
4-2	8	Cutter-L	MP4300800		12
4-2	9	Bush-F	MP4300900		4
4-2	10	Pin-Body-Crusher	MP4301000		1
4-1	11	Bush-Both	MP4301100		4
4-1	12	Bush-Cylinder	MP4301200		2
4-1	13	Pin-Cylinder	MP4301300		2
4-1	14	Motor	MP4301400	Danfoss/OMT400HD	1
4-1	15	Pinion	MP4301500		1
4-2	16	Crusher Coupler	MP4301600		1
4-2	17	Cutter-P	MP4301700		2
4-2	18	Cutter-F	MP4301800		2
4-2	19	Bush-Tooth	MP4301900		8
4-2	20	Pin-Spike-C	MP4302000		1
4-2	21	Pin-Tooth	MP4302100		2
4-2	22	End-T	MP4302200		4
4-2	23	End-B	MP4302300		1
4-2	24	Bolt	902940	M16xL120	2
4-1	25	Center-Joint-Jaw	MP4302500		1
4-1	26	Cap-Joint-Jaw	MP4302600		1
4-1	27	Cover-C	MP4302700		2
4-1	28	Seal-Cap	MP4302800		4
4-3	29	Shear Coupler	MP4302900		1
4-2	30	Bolt-Cutter	577383	M16xL60	42

4.1 Spare Parts List – MP 985R

Fig. 4-2 Coupler Assembly With Demolition Jaw

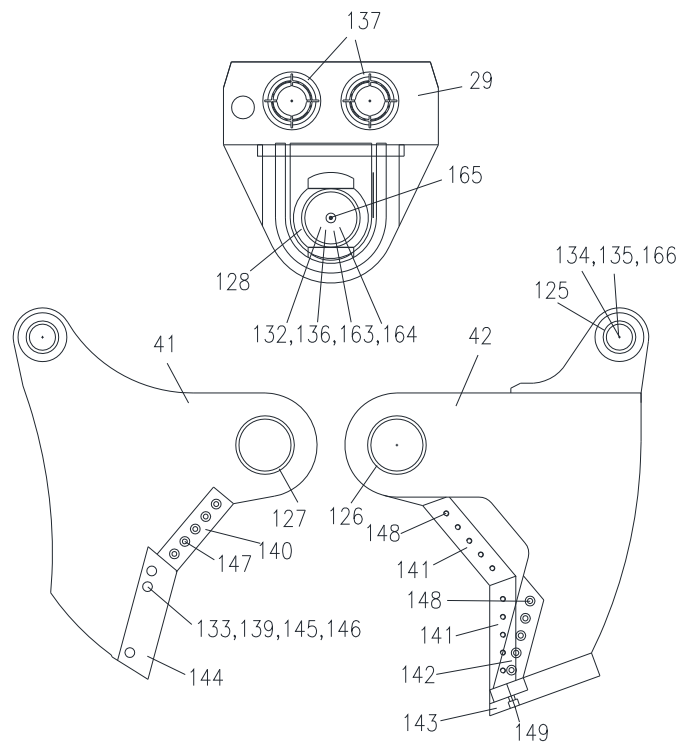
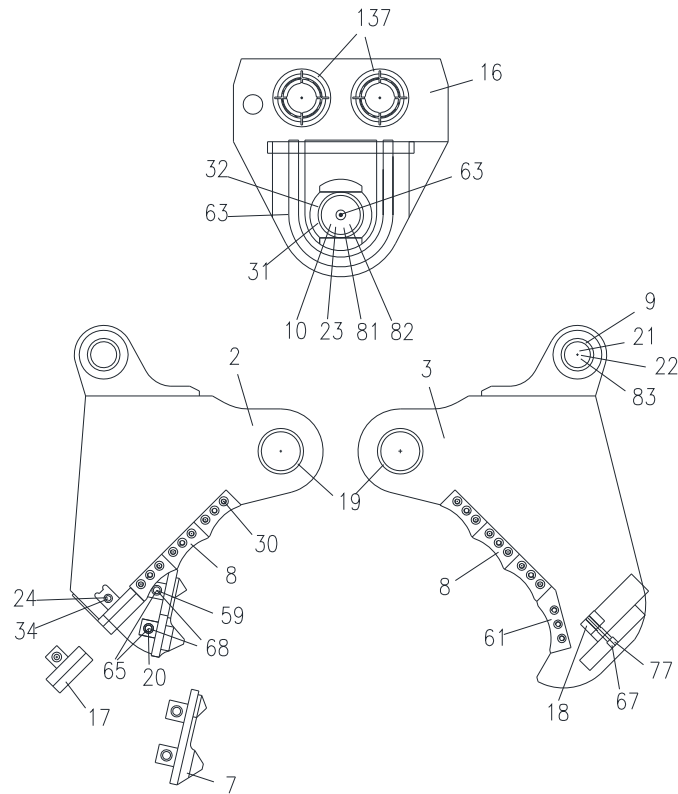


Fig. 4-3 Coupler Assembly With Shear Jaw

4.1 Spare Parts List – MP985R

<u>Fig.</u>	<u>Pos</u>	<u>Name</u>	<u>Part No.</u>	<u>Specification</u>	<u>Qty</u>
4-2	31	Bush-B1-C	MP4303100		2
4-2	32	Bush-B2-C	MP4303200		2
4-1	33	Bolt-Top	575843	M20, L70	44
4-2	34	Nut	657428	M16	2
4-1	35	Bolt-Ring	576896	M20, L75	30
4-2	36	Bolt	577382	M16, L180	6
4-1	37	Backup Ring-Cap	MP4303700	For P100	6
4-1	38	Bolt(Hexa)	679696	M12, L45(hexa)	8
4-1	39	Washer	91012	M12	8
4-1	40	Washer	91010	M20	44
4-3	41	Shear Jaw-L	MP4304100		1
4-3	42	Shear Jaw-R	MP4304200		1
4-4	43	Dust Seal	MP4304300	DSI 160x173	2
4-4	44	Wear Ring-R	MP4304400	D160mm	4
4-4	45	U- Packing	MP4304500	ISI 160x175	2
4-4	46	Backup Ring	MP4304600	For ISI 160	2
4-4	47	O-Ring	MP4304700	P185	2
4-4	48	Backup Ring	MP4304800	For P185	2
4-4	49	Rod Seal	MP4304900	HBV 160x175.5	2
---	50	Blank			---
4-4	51	Wearing-P	MP4305100	D200mm	4
4-4	52	Piston Seal	MP4305200	SPGW 200x177	2
4-4	53	O-Ring	MP4305300	For P110	2
4-1	54	Bolt	577386	M12, L=35(dish)	2
4-1	55	End-Cap	MP4305500		1
4-1	56	End-Pinion	MP4305600		1
4-2	57	Plate-M	MP4305700		1
4-1	58	Wear Ring	MP4305800	D100x105xW10	2
4-2	59	Pin-Spike-G	MP4305900		1
4-4	60	Bearing	MP4306000	SB80A	2

4.1 Spare Parts List – MP985R

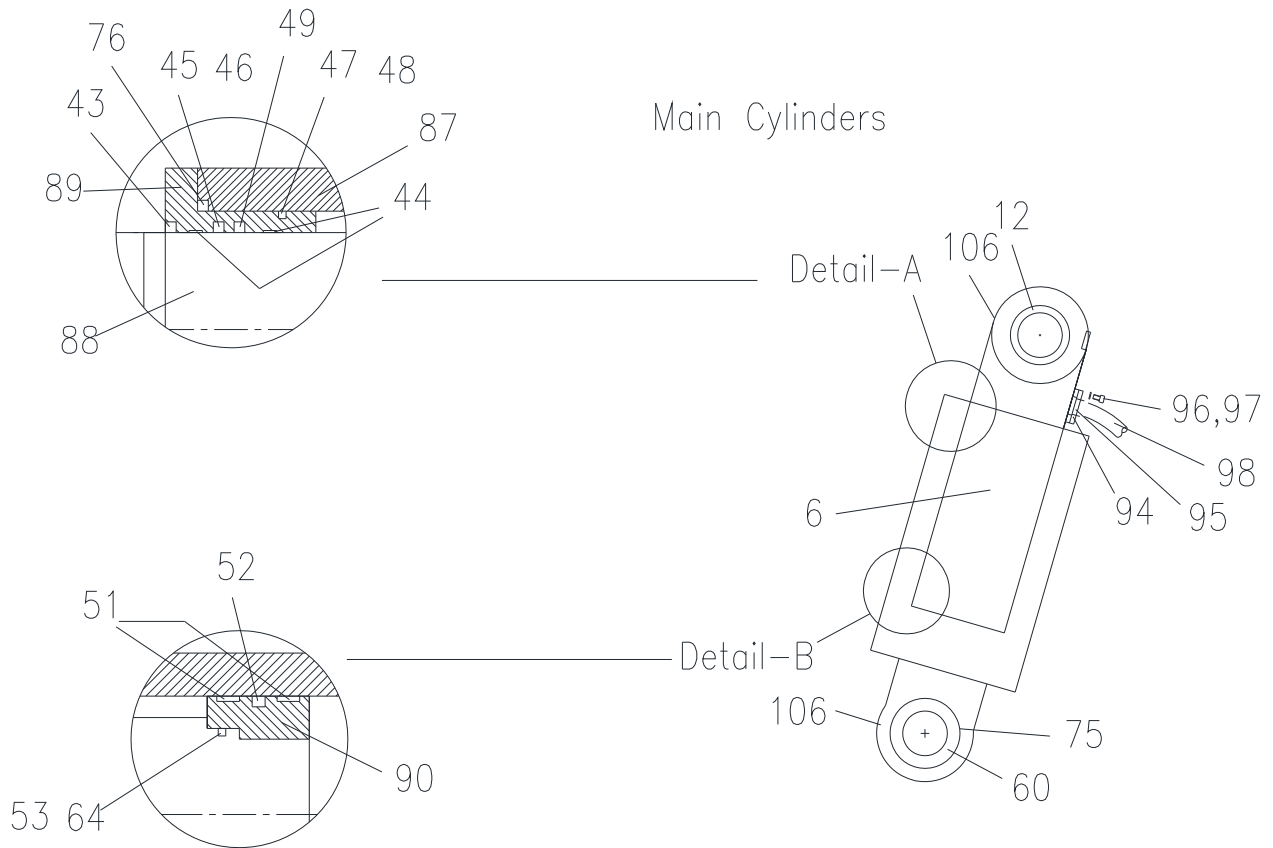


Fig. 4-4 Main Cylinder Assembly – Seals, Packing

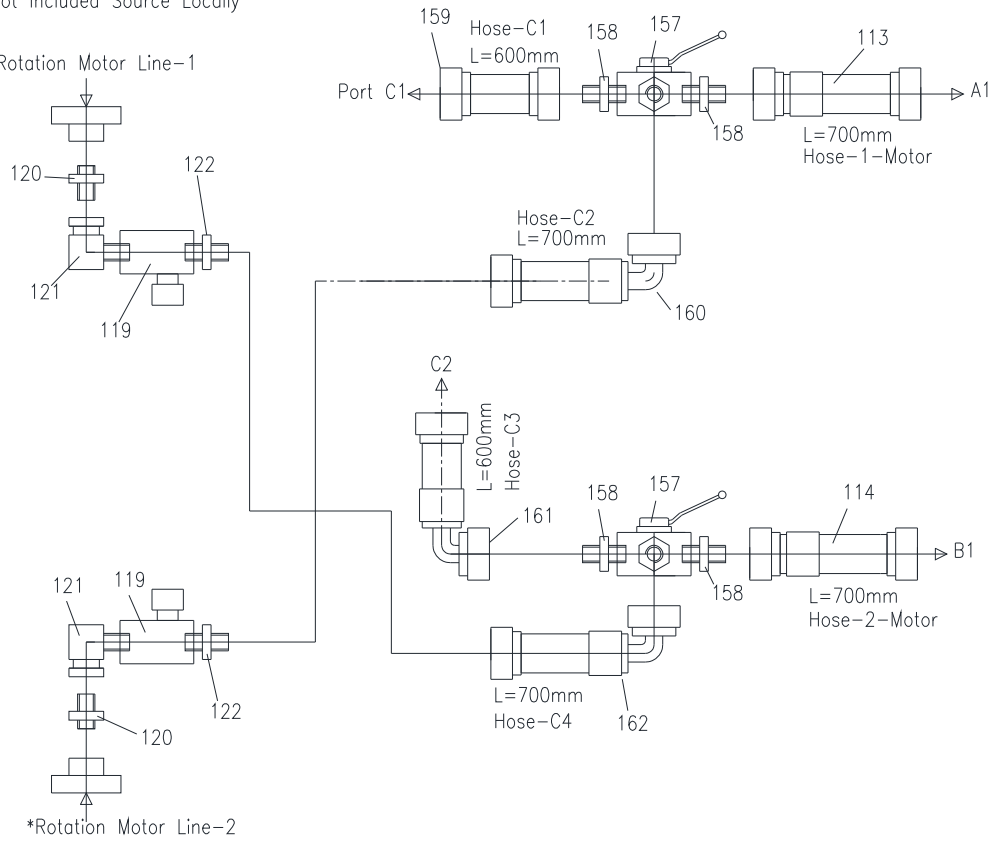
4.1 Spare Parts List – MP985R

<u>Fig</u>	<u>Pos</u>	<u>Name</u>	<u>Part No.</u>	<u>Specification</u>	<u>Qty</u>
4-2	61	Cutter-S	MP4306100		2
---	62	Blank		---	---
4-2	63	Grease Nipple	90201	PT1/8"	2
4-4	64	Backup Ring	MP4306400	For P110	4
4-2	65	Bolt	577384	M10xL25(dish)	2
4-1	66	O-Ring	MP4306600	P100	4
4-2	67	Bolt	902940	M16xL100	4
4-2	68	End-Spike	MP4306800		2
4-1	69	Cover-M	MP4306900		2
4-5	70	Brake-Valve	MP4307000	DANFOSS-OMT	1
4-5	71	Nipple	053593	G1/2"(PF1/2")	2
4-5	72	Hose-Motor	MP4307200	SEE DETAIL	1
4-5	73	Hose-Drain	MP4307300	SEE DETAIL	1
4-5	74	Nipple	571139	G1/4(PF1/4")	1
4-4	75	Snap Ring	MP4307500	D130-Hole	4
4-4	76	O-Ring	MP4307600	P230	2
4-2	77	Bolt	951113	M16xL75	2
4-1	78	Washer	91010	M20	30
4-1	79	Bolt	676164	M16 x L35	4
---	80	---		---	---
4-2	81	Bolt	676164	M16 x L35	2
4-2	82	Washer	056245	M16	2
4-2	83	Bolt	676164	M16 x L35	4
---	84	---		---	---
4-1	85	Bolt	679050	M16 x L40	2
4-1	86	Washer	90597	M16	2
4-4	87	Cylinder Tube	MP4308700		2
4-4	88	Cylinder Rod	MP4308800		2
4-4	89	Cylinder Cover	MP4308900		2
4-4	90	Cylinder Piston	MP4309000		2

4.1 Spare Parts List – MP985R

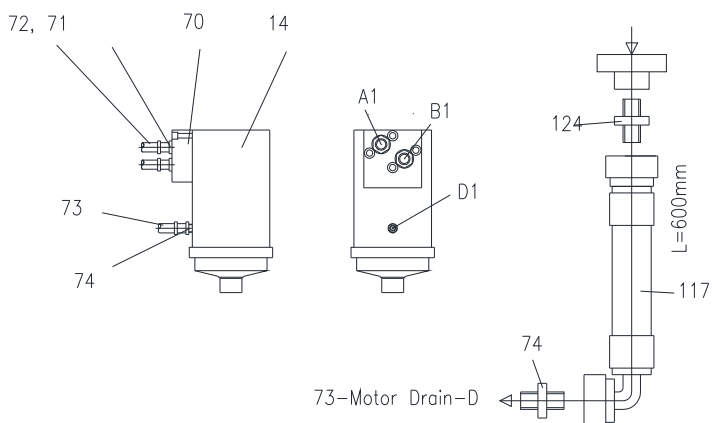
*Not Included Source Locally

*Rotation Motor Line-1



*Rotation Motor Line-2

*Motor Drain Line-1



*Not Included Source Locally

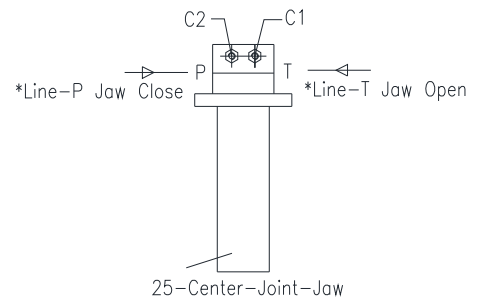


Fig. 4- 5 Rotation Motor, Center-Joint-Jaw

4.1 Spare Parts List – MP985R

<u>Fig</u>	<u>Pos</u>	<u>Part Name</u>	<u>Part No.</u>	<u>Specification</u>	<u>Qty</u>
4-1	91	Bolt	575839	M10 x L75	2
4-1	92	Bolt	675186	M16 x L70	4
4-1	93	Washer	056245	M16	4
4-6	94	Flange Half	MP4309400	1"(420bar)	4 sets
4-6	95	O-Ring	MP4309500	1"(420bar)	4
4-6	96	Bolt	90564	M12 x L40	4 x 4
4-6	97	Washer	840235	M12	8 x 2
4-6	98	Cylinder Hose	MP4309800	SEE DETAIL	1 x 2
4-1	99	Flange Half	MP4309900	1"(420bar)	4 sets
4-1	100	O-Ring	MP4310000	1"(420bar)	4
4-1	101	Bolt	90564	M12 x L40	16
4-2	102	Washer	840235	M12	16
4-1	103	Washer	90597	M16	8
4-1	104	Bolt	940506	M16 X L30	8
4-1	105	Spring Washer	90597	M16	6
4-1	106	Grease Nipple	90201	PT 1/8"	8
4-1	107	Main Adaptor	MP4310700	1-1/2"	2
4-1	108	Holder	MP4310800		4
4-1	109	Bolt	941213	M12 x L30	8
4-1	110	Washer	91012	M12	8
4-1	111	Gauge Plug	MP4311100		4
4-1	112	Bush-Tc	MP4311200		1
4-5	113	Hose-1-Motor-	MP4311300	1/4", L=700mm	1
4-5	114	Hose-2-Motor	MP4311400	1/4", L=700mm	1
---	115	---	---		---
---	116	---	---		---
4-5	117	Hose-Drain-1	MP4311700	1/4", L=600mm	1
---	118	Blank	MP4311800		---
4-5	119	Flow C/V	MP4311900	PT 3/8"	2
4-5	120	Nipple	MP4312000	PF 1/2"-PF 3/8"	2
4-5	121	Swivel Elbow	MP4312100	PF3/8"	2
4-5	122	Nipple	575849	PF3/8"-PF1/4"	2
---	123	---	---		
4-5	124	Nipple	571139	PF1/4"	1
4-3	125	Bush-Both-Jaw	MP4312500		4

4.1 Spare Parts List – MP985R

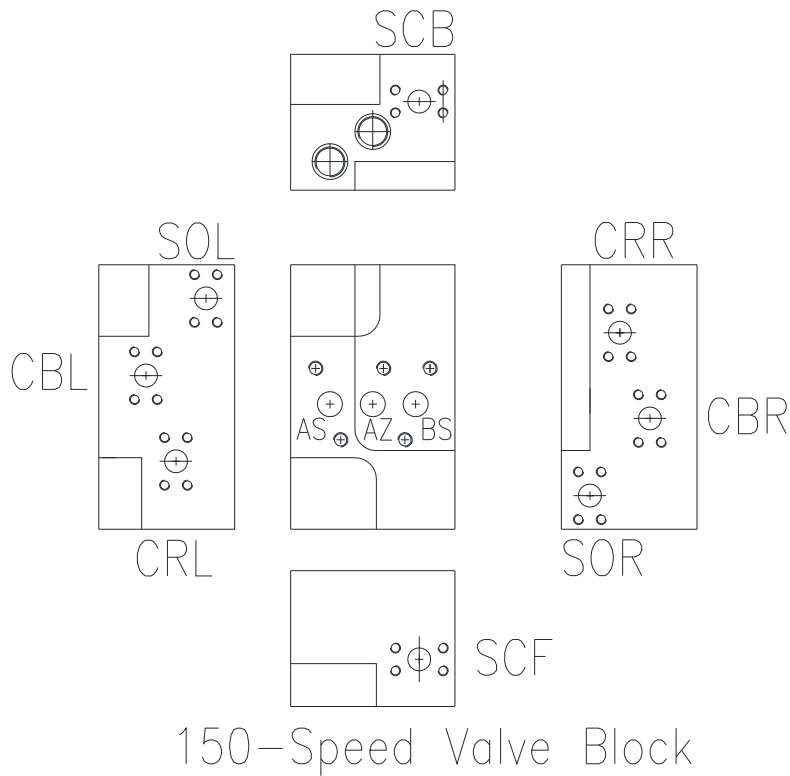
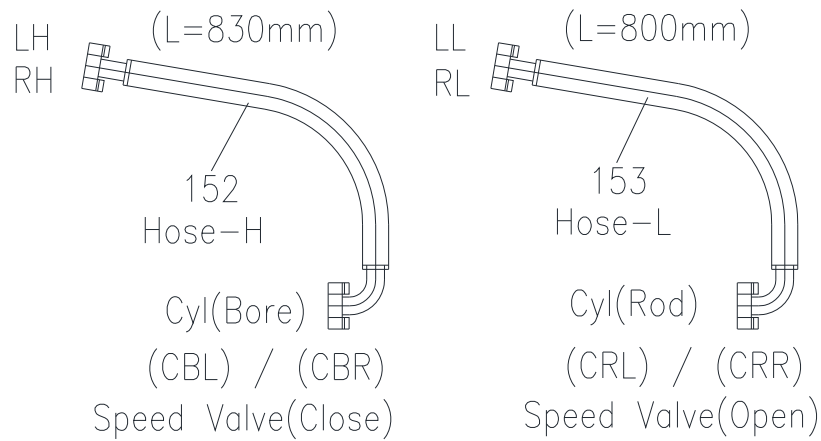
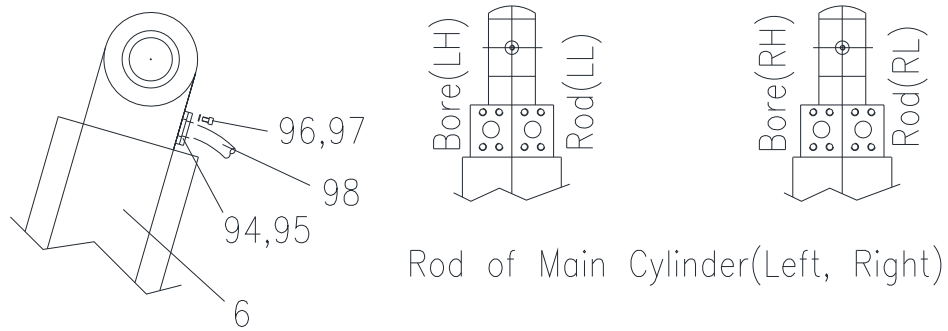


Fig. 4-6A Hoses At Cylinder and Speed Valve

4.1 Spare Parts List – MP985R

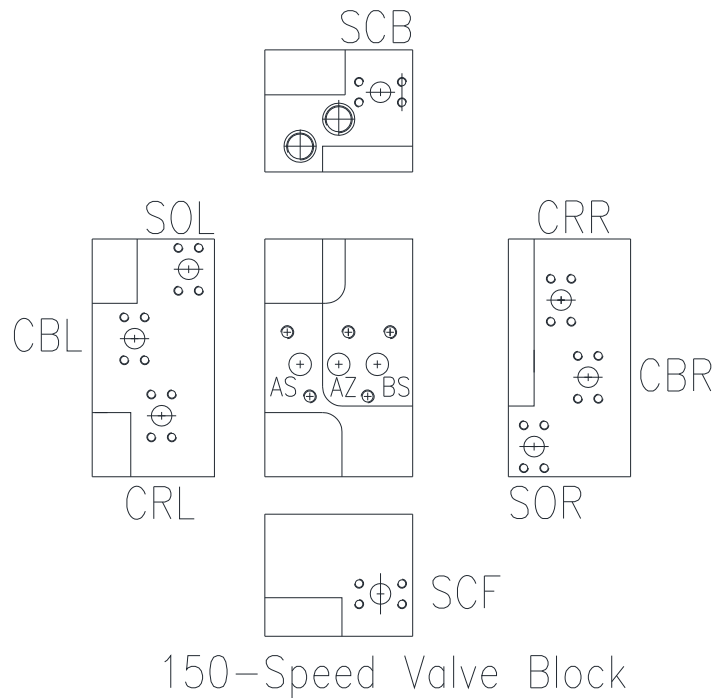
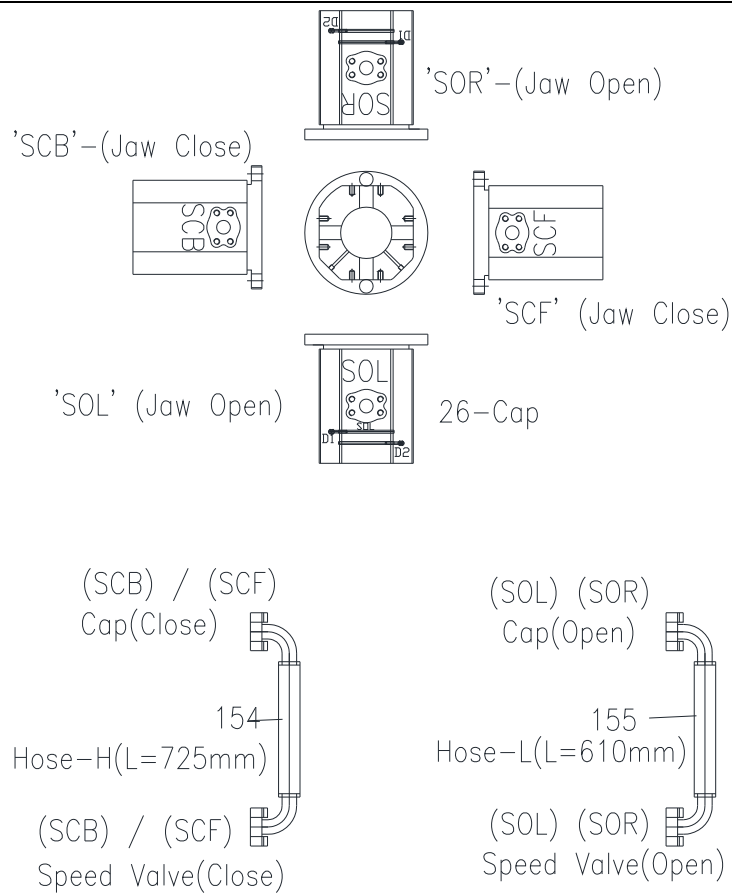


Fig. 4-6B Hoses At Cap and Speed Valve

4.1 Spare Parts List – MP985R

<u>Fig</u>	<u>Pos</u>	<u>Part Name</u>	<u>Part No.</u>	<u>Specification</u>	<u>Qty</u>
4-3	126	Bush-Tooth-Jaw	MP4312600		4
4-3	127	Bush-B1-Jaw	MP4312700		2
4-3	128	Bush-B2-Jaw	MP4312800		2
4-1	129	Bush-C1	MP4312900		8
	130	Bush-C2 (Demo)	MP4313000		8
4-7	131	Connecting Cylinder	MP4313100		2
4-3	132	Pin-Body-Shear	MP4313200		1
4-3	133	Pin-Cutter	MP4313300		3
4-3	134	Pin-Tooth-Shear	MP4313400		2
4-3	135	End-T-Jaw	MP4313500		2
4-3	136	End-B-Jaw	MP4313600		1
4-2,3	137	Bush-C2 (Shear)	MP4313700		8
---	138	---	---		---
4-3	139	End-Cutter	MP4313900		3
4-3	140	Cutter-L-M	MP4314000		1
4-3	141	Cutter-R-M	MP4314100		2
4-3	142	Cutter-S-M	MP4314200		1
4-3	143	Cutter-F-M	MP4314300		1
4-3	144	Cutter-P-M	MP4314400		1
4-3	145	Snap Ring	MP4314500	PIN -32mm	3
4-3	146	Bolt	577385	M12 x L25(dish)	3
4-3	147	Bolt	577381	M16 x L130	5
4-3	148	Bolt	679037	M16 x L55	15
4-3	149	Bolt	679037	M16 x L55	5
4-1	150	Speed Valve Block	MP4315000	800lpm	1
4-1	151	Speed Valve	MP4315100	800lpm	1
4-6	152	Hose-Cylinder-H	MP4315200	1-1/4"(420lpm), L=830	2
4-6	153	Hose-Cylinder-L	MP4315300	1-1/4"(420lpm), L=800	2
4-6	154	Hose-Cap-H	MP4315400	1-1/4"(420lpm), L=725	2
4-6	155	Hose-Cap-L	MP4315500	1-1/4"(420lpm), L=610	2
---	156	---	---		---
4-5	157	Directional Valve	MP4315700	PF 1/4"	2
4-5	158	Nipple	571139	PF 1/4"	4
4-5	159	Hose-C1	MP4315900	PF 1/4", L=600	1
4-5	160	Hose-C2	MP4316000	PF 1/4", L=700	1

4.1 Spare Parts List – MP985R

<u>Fig</u>	<u>Pos</u>	<u>Part Name</u>	<u>Part No.</u>	<u>Specification</u>	<u>Qty</u>
4-5	161	Hose-C3	MP4316100	PF 1/4", L=600	1
4-5	162	Hose-C4	MP4316200	PF 1/4", L=700	1
4-3	163	Bolt	676164	M16 x L35	2
4-3	164	Washer	056245	M16	2
4-3	165	Grease Nipple	90201	PT1/8"	1
4-3	166	Bolt	676164	M16 x L35	4
---	167	---	---		
4-1	168	Plate-B24	MP4316800		2
4-1	169	Bolt	940506	M16 x L30	8
4-1	170	Washer	90597	M16	8
4-7	171	Cylinder Tube-Pin	MP4317100		2
4-7	172	Cylinder Rod-Pin	MP4317200		4
4-7	173	Cylinder Rod Pin-A	MP4317300		4
4-7	174	Cylinder Cover-Pin	MP4317400		4
4-7	175	Dust Seal	MP4317500		4
4-7	176	Guide Ring	MP4317600		4
4-7	177	Rod Packing	MP4317700		4
4-7	178	Backup Ring	MP4317800		4
4-7	179	O-Ring	MP4317900		8
4-7	180	Backup Ring	MP4318000		12
4-7	181	Wear Ring	MP4318100		4
4-7	182	Bolt	940506	M16 X L30	48
4-7	183	Bolt	941213	M12 x L30	4
4-7	184	End-Pin	MP4318400		4
4-7	185	Bolt	941213	M12 x L30	8
4-7	186	Hose-Connector-H	MP4318600	1/4"(420bar), L=500	2
4-7	187	Hose-Connector-L	MP4318700	1/4"(420bar), L=600	4
4-7	188	Hose-Couple	MP4318800	1/4"(420bar), L=800	1
4-7	189	Hose-Cap-D1	MP4318900	1/4"(420bar), L=800	1
4-7	190	Hose-Cap-D2	MP4319000	1/4"(420bar), L=700	1
4-7	191	Nipple	571139	PF 1/4"	15

4.1 Service Kits – MP 985R

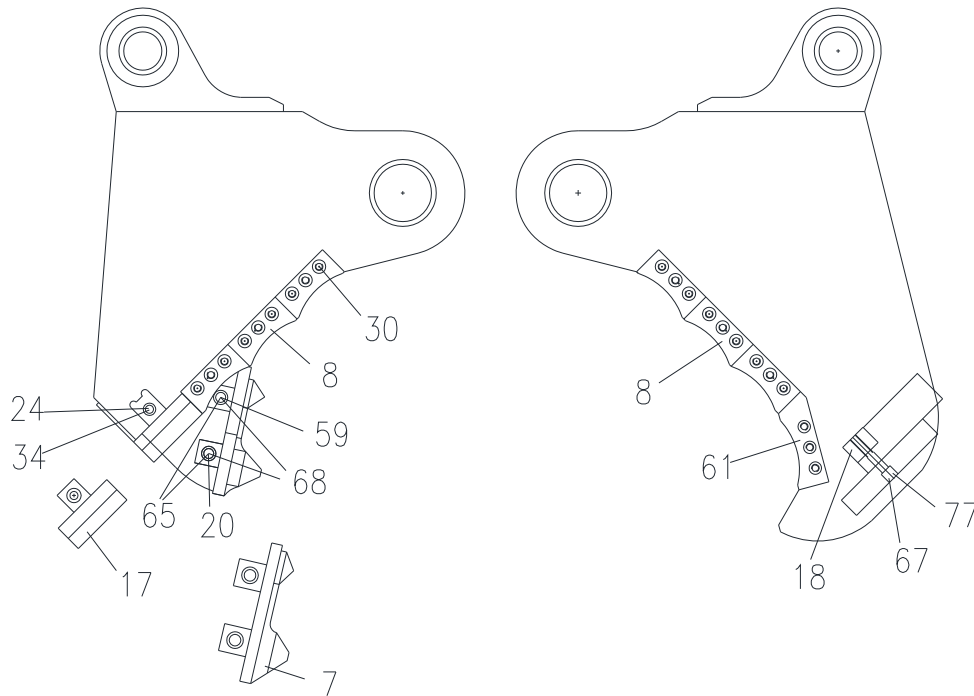


Fig 4-8 Blade Kit – Demolition Jaw

<u>Fig</u>	<u>Pos</u>	<u>Name</u>	<u>Part No.</u>	<u>Specification</u>	<u>Qty</u>
4-8	---	Blade Kit	577211	*Note	1
4-8	7	Spike-C	MP4300700		1
4-8	8	Cutter-L	MP4300800		12
4-8	17	Cutter-P	MP4301700		2
4-8	18	Cutter-F	MP4301800		2
4-8	20	Pin-Spike-C	MP4302000		1
4-8	*24	Bolt	902940	M16xL120	2
4-8	*30	Bolt-Cutter	577383	M16xL60	42
4-8	*34	Nut	657428	M16	2
4-8	*59	Pin-Spike-G	MP4305900		1
4-8	61	Cutter-S	MP4306100		2
4-8	*65	Bolt	577384	M10xL25 (dish)	2
4-8	*67	Bolt	902940	M16xL100	4
4-8	*68	End-Spike	MP4306800		2
4-8	*77	Bolt	951113	M16xL75	2

*Hardware and Pin Spike G Not Included in Blade Kit.

5.0 How To Order Spare Parts

Product Multi Processor
 Model MP 985R
 Serial No. _____

Please provide complete information including the Product, Model and Serial Number when ordering parts. See Section 2.3 Owner's record of the equipment.

Please fill out completely

Line	Description	Part Number	Quantity	Price
1				
2				
3				
4				
5				
6				
7				
8				
9				
10				

Your contact information

Your Name _____ Company Name _____
 Phone _____ Account Number _____
 Fax _____ Purchase order _____
 Email _____ Shipping method _____
 See note*

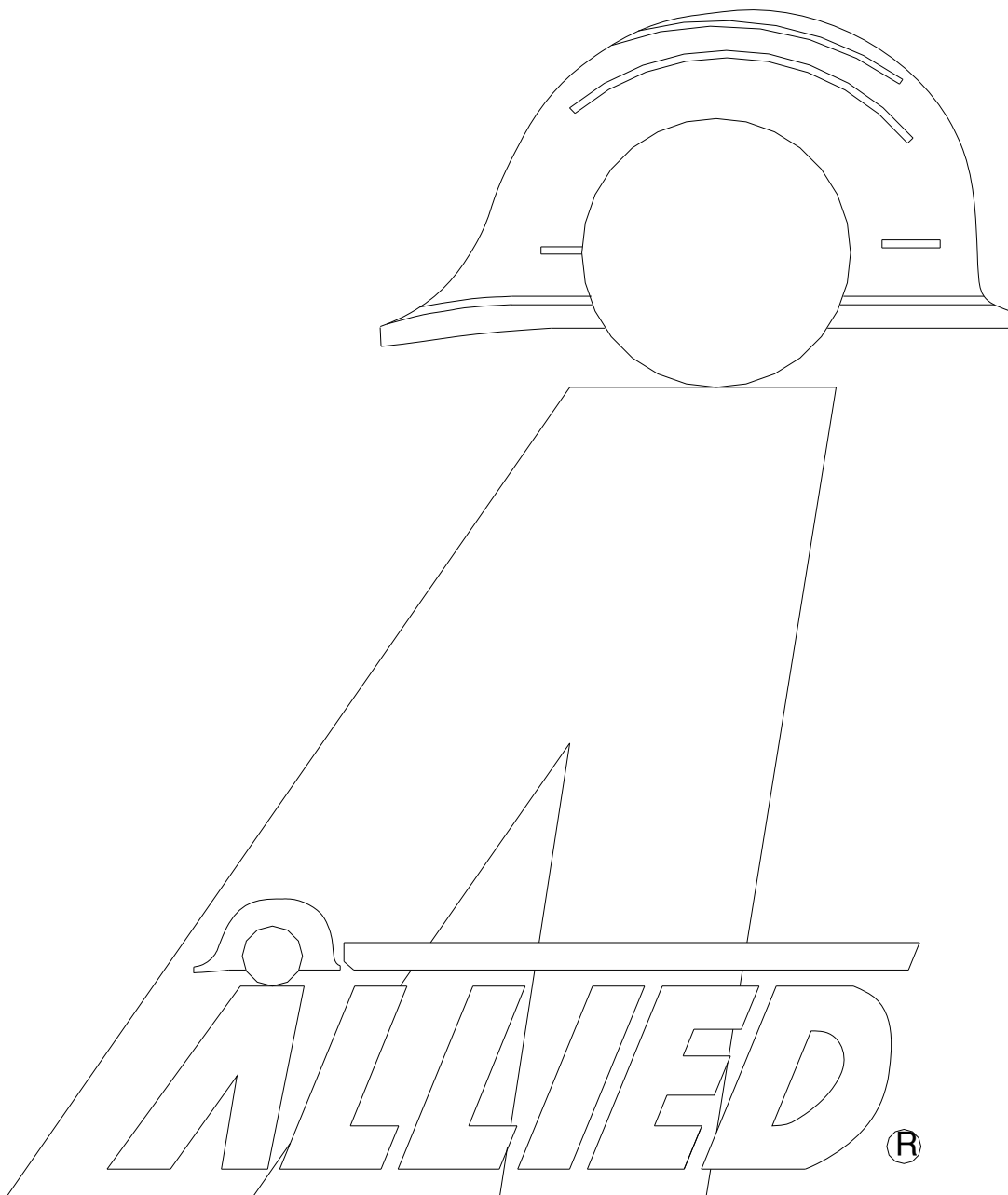
Billing Address _____ Shipping Address _____

***Note: All backordered parts will be shipped when available via the same method as the original order unless initialed and checked below:**

Initials _____
☐ Ship complete order only
☐ Ship available parts and contact customer on disposition of backordered parts
☐ Other – specify below

Notes:

[illegible]



3900 Kelley Avenue, Cleveland, Ohio 44114
Tel: 216-431-2600 Fax: 216-431-2601
e-mail: Sales@AlliedCP.com
website: <http://www.AlliedCP.com>