

ENG B/04

**PARTS MANUAL**  
**PMIN15SENG.B04**

# **HYDRAULIC HAMMER**

## **RAMMER in15**

**Serial No.**  
**15180005-UP**

---

## TABLE OF CONTENTS

1. Housing unit . . . . .	4
2. Accumulator . . . . .	5
3. Pressure adjusting valve . . . . .	6
4. Body parts . . . . .	7
5. Mounting . . . . .	8
6. Seal set . . . . .	9

---

### GENUINE RAMMER SPARE PARTS

Rammer genuine spare parts are designed and manufactured by using the latest technological knowledge and engineering skills. Rammer spare parts are made of the best available materials with the most advanced manufacturing techniques.

It is important that you use only genuine Rammer spare parts, to ensure easy operation, maintenance and repair of the product. Please note that eventual warranty claims will be handled only if you have used genuine Rammer parts in your Rammer.

### LOCATION OF THE SERIAL NUMBER

It's important to make correct reference to the serial number of the product when ordering spare parts. Identification of serial number is the only proper means of maintaining and identifying parts for a specific product. The location of equipment serial number is pointed in "Operation and maintenance" manual.

### SPARE PART ORDERS

Quick spare part deliveries are secured by exact orders.

#### Required information:

- Name of customer and contact person
  - Order number (when available)
  - Delivery address
  - Mode of delivery (air mail etc.)
  - Required delivery date
  - Invoicing address
  - Model and serial number of the product
  - Name, number and required amount of spare parts
-

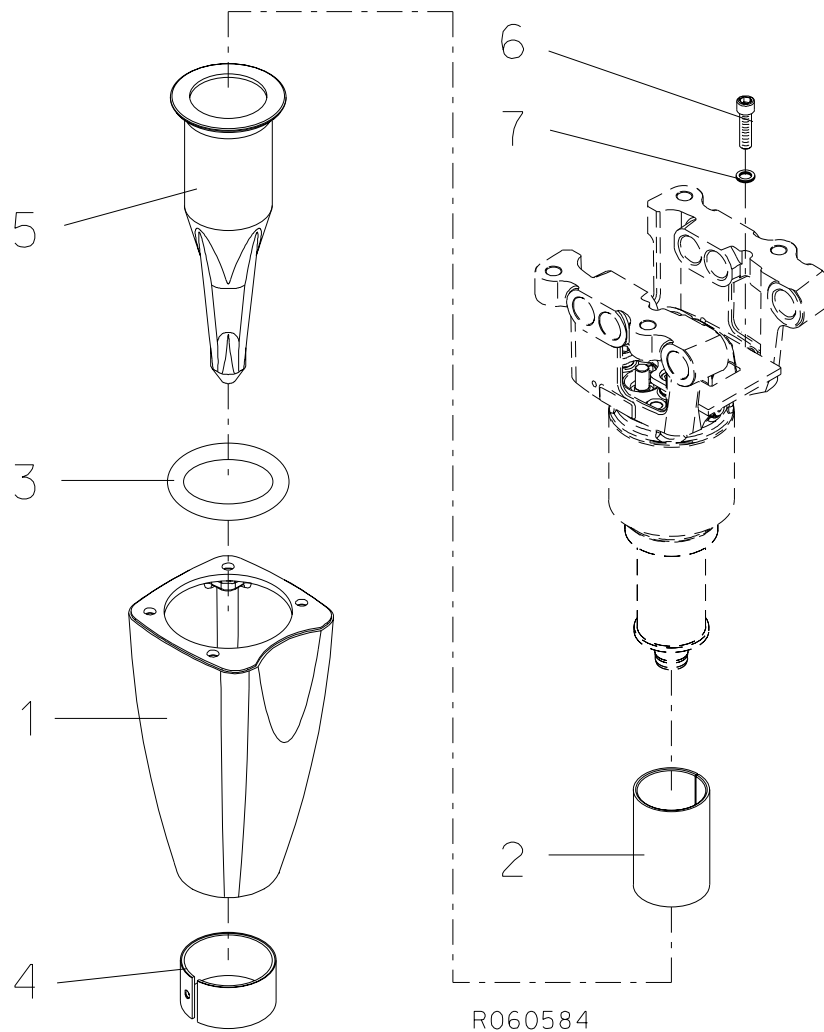
---

---

# PARTS

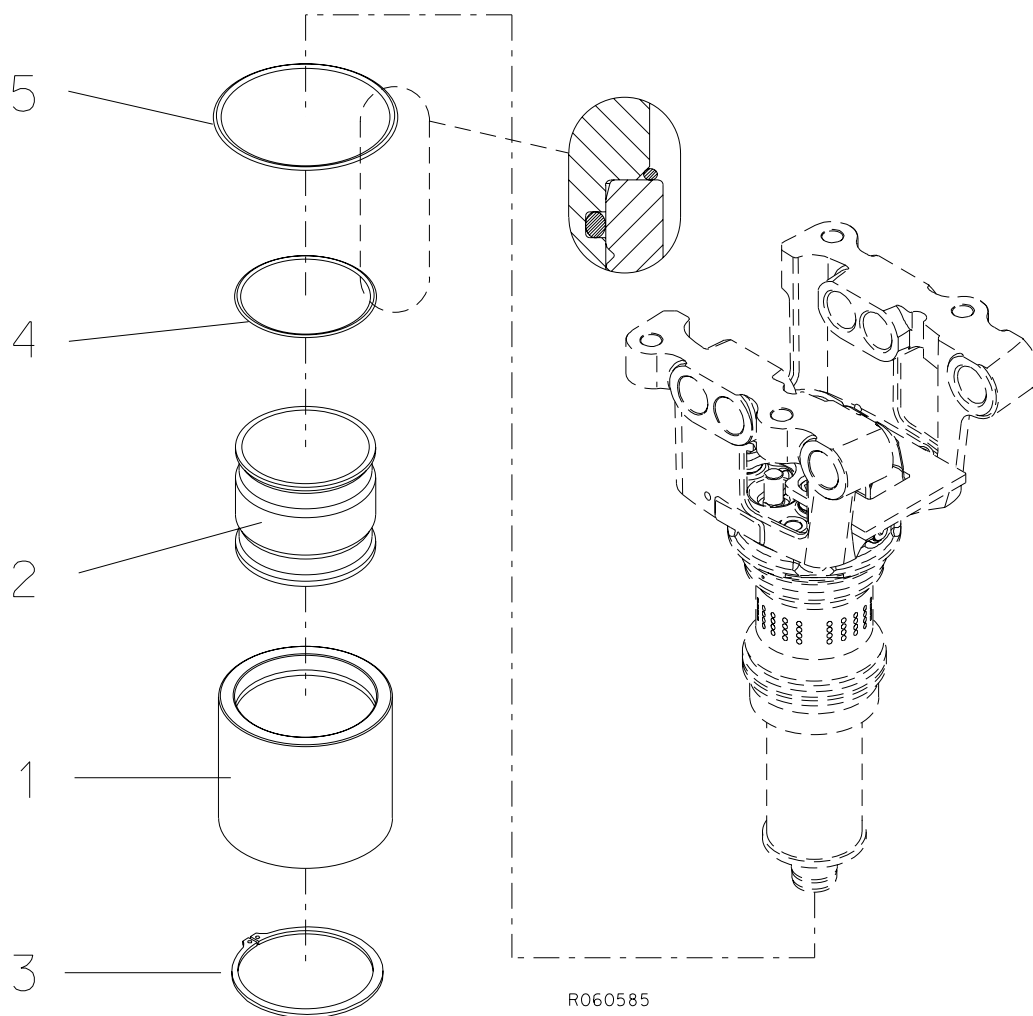
---

# 1. HOUSING UNIT



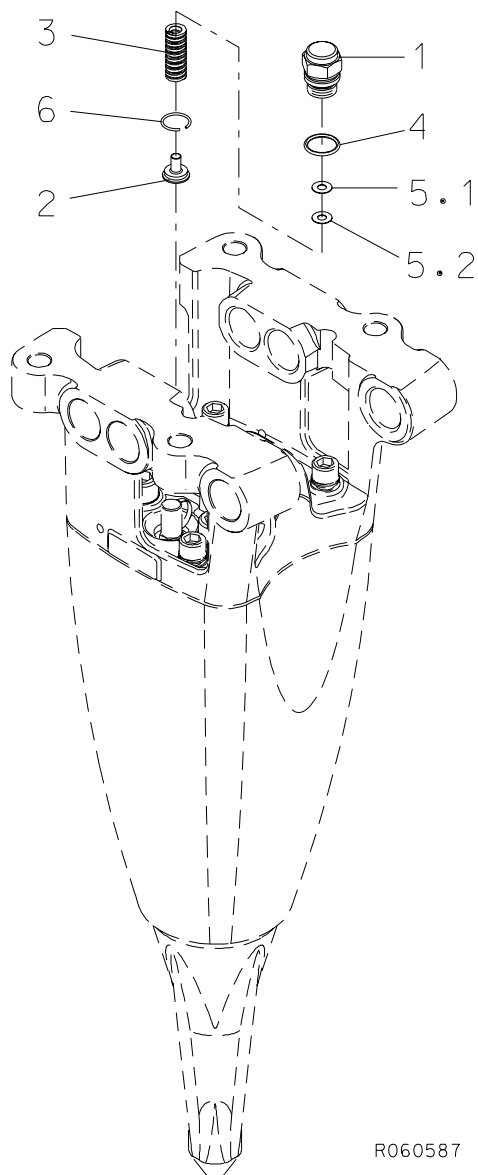
Item	Description	Part no.	Specification	Note	Qty
1	Housing	154994			1
2	Lower tool bushing	113073			1
3	Tool retaining ring	113078			1
4	Guide ring	157122			1
5	Pyramid tool	N123S1			1
6	Hex. socket screw	91006	M16x60-8.8 ISO 4762		4
7	Lock washer	90597	M16 NORD-LOCK		4
Kit	Label set	157233			1

## 2. ACCUMULATOR



Item	Description	Part no.	Specification	Note	Qty
1	Accumulator cover	113053			1
2	Membrane	113063			1
3	Retaining ring	950103	160x4 DIN 471		1
4	O-ring	910004	D149	*	1
5	O-ring	901130	D160	*	1
	*) Are included in seal set				

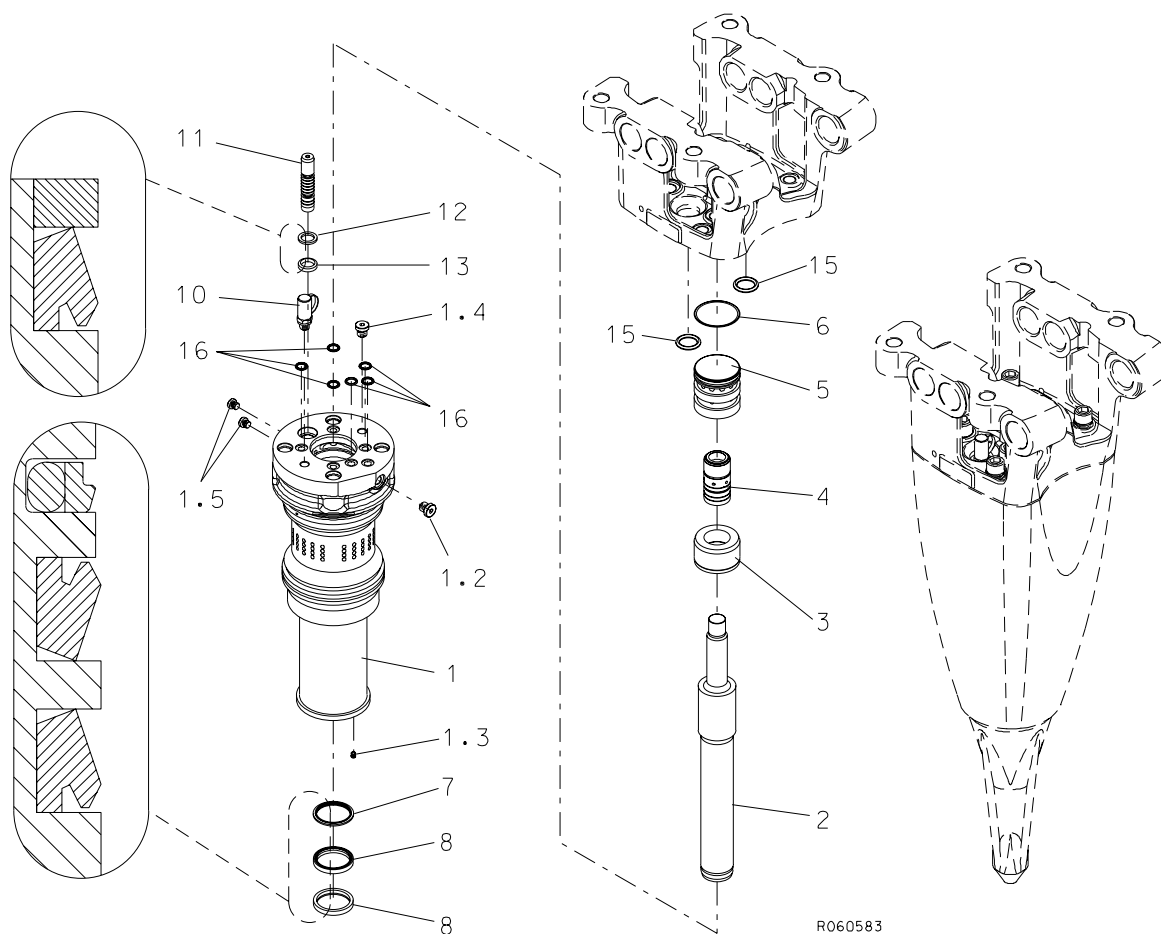
### 3. PRESSURE ADJUSTING VALVE



R060587

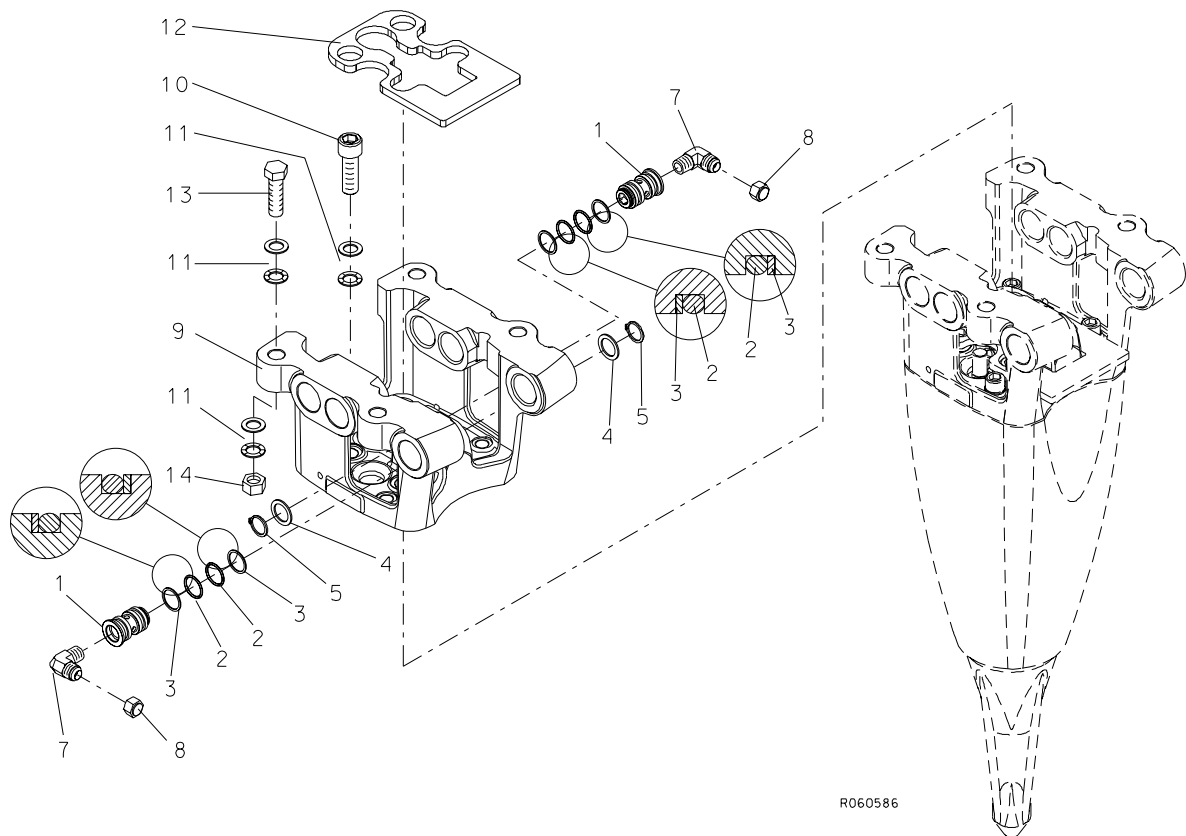
Item	Description	Part no.	Specification	Note	Qty
1	Spring housing	113091			1
2	Spring guide	113006			1
3	Spring	90114	9-1208-26 DANLY		1
4	O-ring	90015	D26	*	1
5.1	Shim plate	41639	S=0.5		x
5.2	Shim plate	41640	S=1		x
6	Spring ring	902988	B25 DIN 7993		1
	*) Are included in seal set				

## 4. BODY PARTS



Item	Description	Part no.	Specification	Note	Qty
1	Cylinder (incl. parts 1.2-1.5)	154634			1
1.2	Flange plug	90403	R1/4		1
1.3	Plug	903419			1
1.4	Flange plug	41658	R1/4		1
1.5	Flange plug	93203	R1/8		2
2	Piston	154732			1
3	Steering ring	113043			1
4	Distributor	113033			1
5	Slide ring	113023			1
6	O-ring	90014	D65	*	1
7	Seal	951898		*	1
8	Seal	951900		*	2
10	Accumulator filling valve	903408			1
11	Spool	113084			1
12	Washer	157117			1
13	Seal	951479	D18	*	1
15	O-ring	90017	D34	*	2
16	O-ring	90011	D14	*	6
	*) Are included in seal set				

## 5. MOUNTING

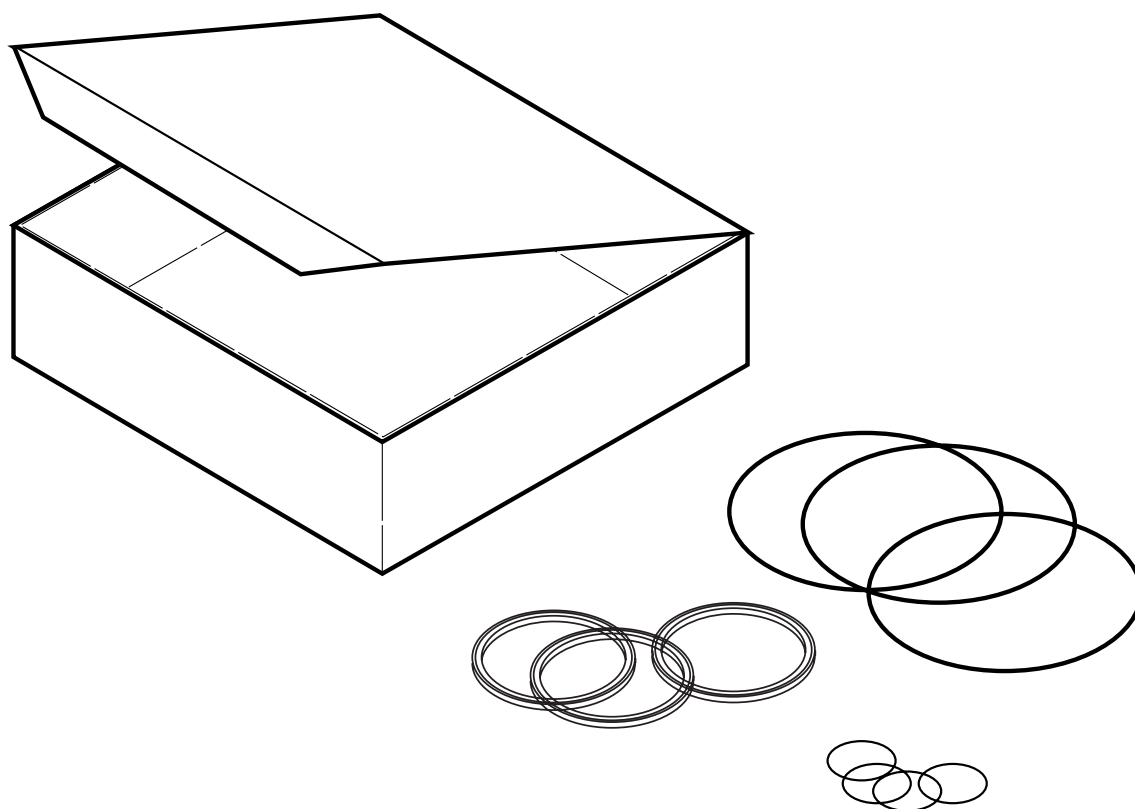


R060586

Item	Description	Part no.	Specification	Note	Qty
1	Manifold	113058			2
2	O-ring	90015	D26	*	4
3	Supporting ring	912005	D26	*	4
4	Support plate	903395	SS25x36x2.0 DIN 988		2
5	Retaining ring	950188	25x2 DIN 471		2
7	Elbow	951333			2
8	Cap	915030			2
9	Mounting bracket	156874			1
10	Hex. socket screw	91064	M20x60-8.8 ISO 4762		4
11	Lock washer	91010	M20 NORD-LOCK		12
12	Rubber plate	157187			1
13	Hex. screw	91022	M20x90-8.8 ISO 4014		4
14	Hex. nut	91017	M20-8 ISO 4032		4
	*) Are included in seal set				



## 6. SEAL SET



R060012

Item	Description	Part no.	Specification	Note	Qty
Kit	Seal set (incl. parts 1-10)	157279			1
1	O-ring	90015	D26		5
2	Supporting ring	912005	D26		4
3	O-ring	910004	D149		1
4	O-ring	90014	D65		1
5	Seal	951898			1
6	Seal	951900			2
7	Seal	951479	D18		1
8	O-ring	90011	D14		6
9	O-ring	901130	D160		1
10	O-ring	90017	D34		2





Sandvik Tamrock Corp., Breakers Lahti  
Taivalkatu 8, P.O. Box 165, FIN-15101 Lahti, Finland  
Phone Int. +358 205 44 161, Telefax Int. +358 205 44 160  
[www.rammer.com](http://www.rammer.com)