

PARTS MANUAL
PMS25NENG.302

HYDRAULIC HAMMER
RAMMER S 25 N
RAMMER S 25 N CITY
RAMMER S 25 N UNIRAM

Serial No.

25BBB0005-UP

25BDB0005-UP

25BCB0005-UP

TABLE OF CONTENTS

1. Housing unit S 25 N	4
2. Housing unit S 25 N CITY	5
3. Housing unit S 25 N UNIRAM.	6
4. Low pressure accumulator S 25 N	7
5. High pressure accumulator S 25 N	8
6. Pressure adjusting valve S 25 N.	9
7. Tie rod S 25 N	10
8. Valve body and distributor S 25 N	11
9. Cylinder and piston S 25 N.	12
10. Front head S 25 N.	13
11. Lower tool bushing S 25 N.	14
12. Seal set S 25 N	15

GENUINE RAMMER SPARE PARTS

Rammer genuine spare parts are designed and manufactured by using the latest technological knowledge and engineering skills. Rammer spare parts are made of the best available materials with the most advanced manufacturing techniques.

It is important that you use only genuine Rammer spare parts, to ensure easy operation, maintenance and repair of the product. Please note that eventual warranty claims will be handled only if you have used genuine Rammer parts in your Rammer.

LOCATION OF THE SERIAL NUMBER

It's important to make correct reference to the serial number of the product when ordering spare parts. Identification of serial number is the only proper means of maintaining and identifying parts for a specific product. The location of equipment serial number is pointed in "Operation and maintenance" manual.

SPARE PART ORDERS

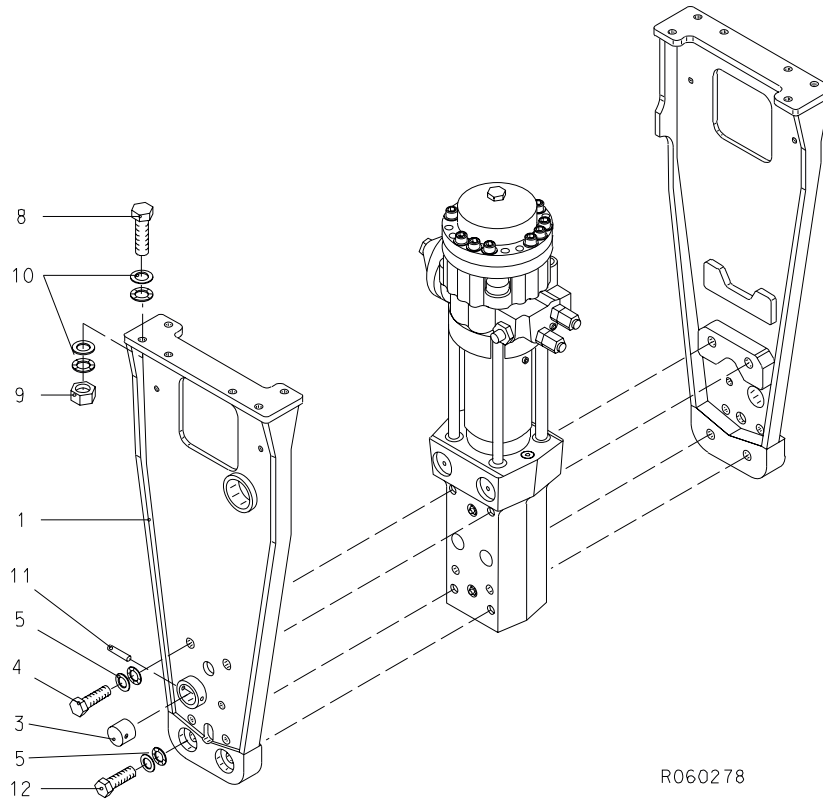
Quick spare part deliveries are secured by exact orders.

Required information:

- Name of customer and contact person
 - Order number (when available)
 - Delivery address
 - Mode of delivery (air mail etc.)
 - Required delivery date
 - Invoicing address
 - Model and serial number of the product
 - Name, number and required amount of spare parts
-

PARTS

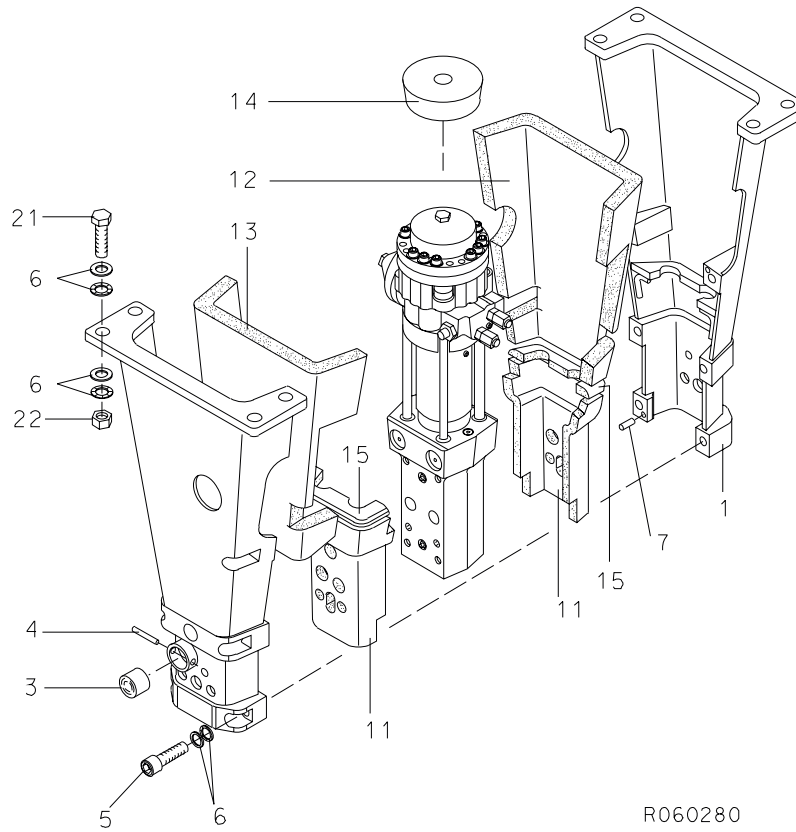
1. HOUSING UNIT S 25 N



R060278

Item	Description	Part no.	Specification	Note	Qty
1	Housing plates	110936			1
3	Buffer	42107			2
4	Hex. screw	901445	M24x90-10.9 DIN 931		4
5	Lock washer	91038	M24 NORD-LOCK		8
8	Hex. screw	90566	M16x70-8.8 DIN 931		12
9	Hex. nut	91000	M16-8 DIN 934		12
10	Lock washer	90597	M16 NORD-LOCK		24
11	Split pin	90345	10x70 DIN 7343		2
12	Hex. screw	902263	M24x80-10.9 DIN 933		4
Kit	Label set	300455			1

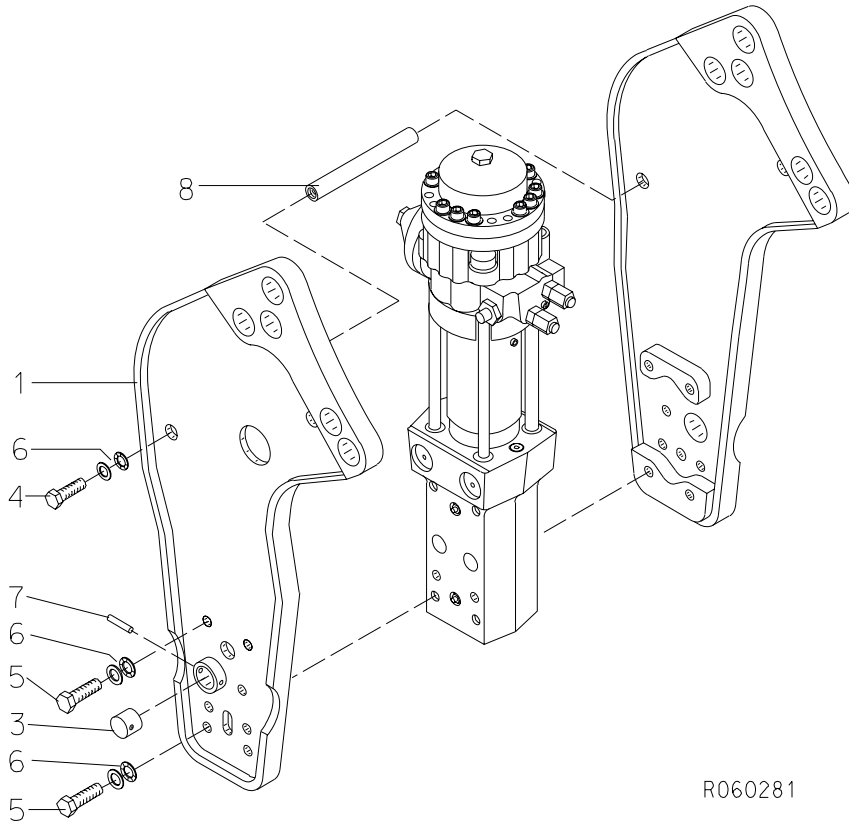
2. HOUSING UNIT S 25 N CITY



R060280

Item	Description	Part no.	Specification	Note	Qty
1	Housing plates	111084			1
3	Buffer	42107			2
4	Split pin	90345	10x70 DIN 7343		2
5	Hex. socket screw	900005	M20x90-8.8 DIN 912		6
6	Lock washer	91010	M20 NORD-LOCK		22
7	Parallel pin	901101	10m6x70 DIN 6325		2
11	Damper	106022			2
12	Upper muffler, right	200348			1
13	Upper muffler, left	200349			1
14	Buffer	300908			1
15	Pad	109960			2
21	Hex. screw	91027	M20x70-8.8 DIN 931		8
22	Hex. nut	91017	M20-8 DIN 934		8
Kit	Label set	300630			1

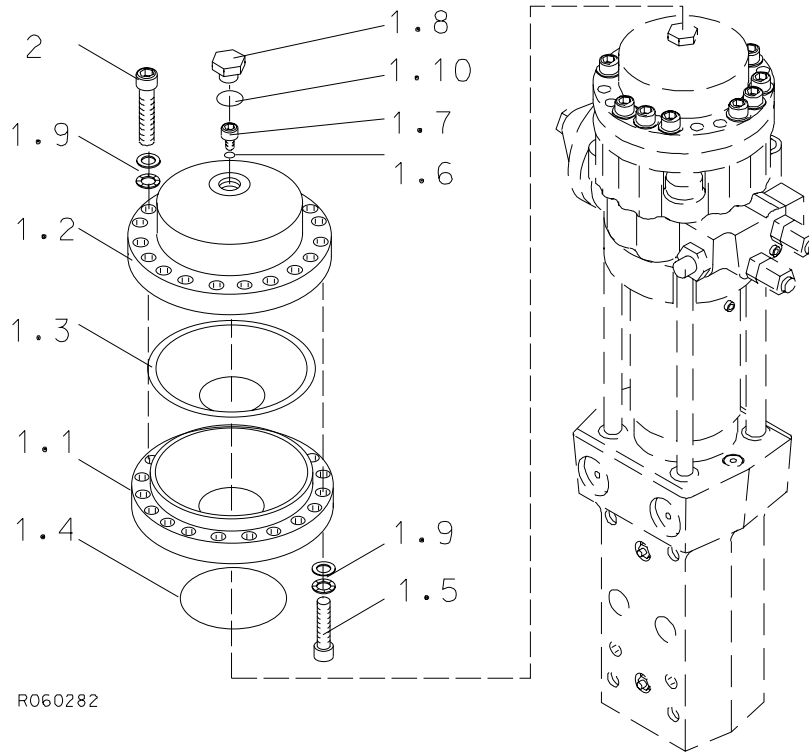
3. HOUSING UNIT S 25 N UNIRAM



R060281

Item	Description	Part no.	Specification	Note	Qty
1	Housing plates	110946			1
3	Buffer	42107			2
4	Hex. screw	901444	M24x60-10.9 DIN 933		4
5	Hex. screw	901445	M24x90.10.9 DIN 931		8
6	Lock washer	91038	M24 NORD-LOCK		12
7	Split pin	90345	10x70 DIN 7343		2
8	Spacer tube	103457			2
	Label set	104422			

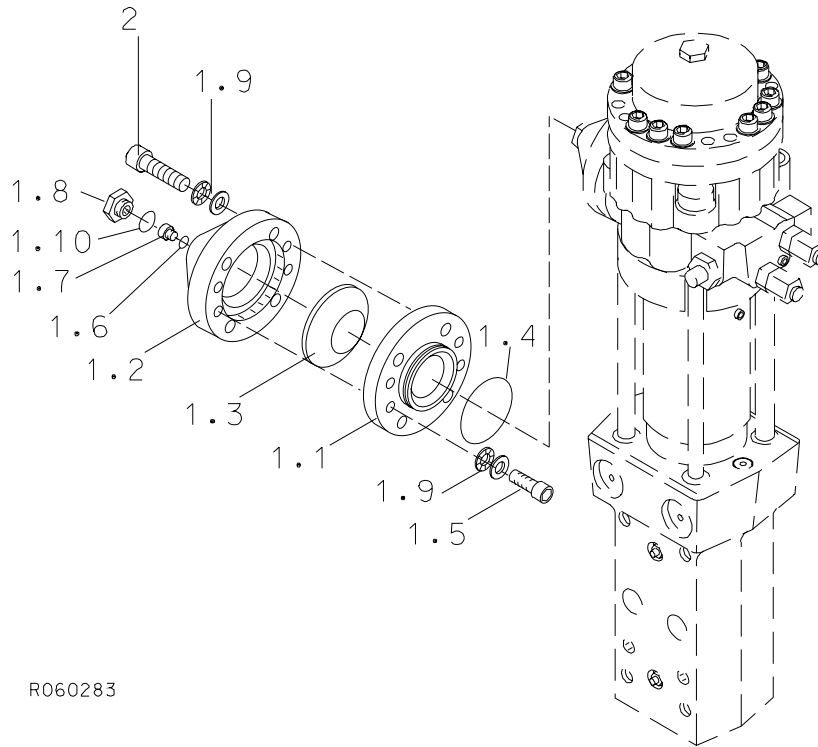
4. LOW PRESSURE ACCUMULATOR S 25 N



R060282

Item	Description	Part no.	Specification	Note	Qty
1	Low pressure accumulator (incl. parts 1.1-1.10)	100234			1
1.1	Accumulator bottom	100233			1
1.2	Accumulator cover	100232			1
1.3	Membrane	20604			1
1.4	O-ring	90032	D120	*	1
1.5	Hex. socket screw	91105	M16x70-8.8 DIN 912		8
1.6	Usit-ring	90056	D9	*	1
1.7	Filling plug	042074			1
1.8	Shield plug	400300			1
1.9	Lock washer	90597	M16 NORD-LOCK		20
1.10	O-ring	910006	D23	*	1
2	Hex. socket screw	900004	M16x90-8.8 DIN 912		12
	*) Are included in seal set				

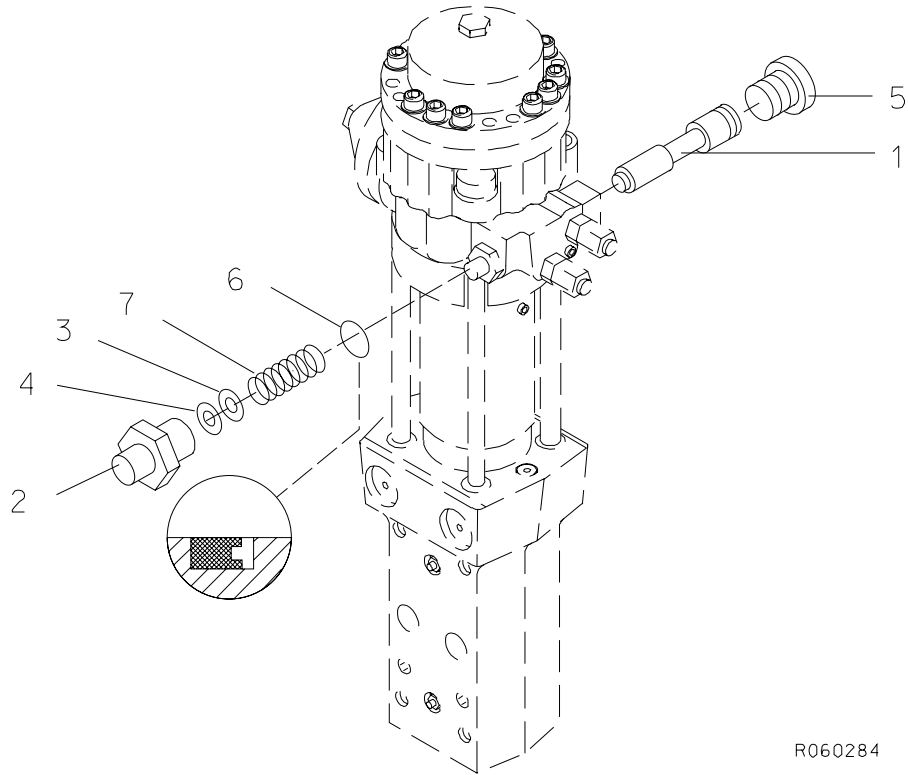
5. HIGH PRESSURE ACCUMULATOR S 25 N



R060283

Item	Description	Part no.	Specification	Note	Qty
1	High pressure accumulator (incl. parts 1.1-1.10)	200201			1
1.1	Accumulator bottom	200199			1
1.2	Accumulator cover	200200			1
1.3	Membrane	41713			1
1.4	O-ring	90025	D85	*	1
1.5	Hex. socket screw	91005	M16x45-8.8 DIN 912		4
1.6	Usit-ring	90056	D9	*	1
1.7	Filling plug	42074			1
1.8	Shield plug	400300			1
1.9	Lock washer	90597	M16 NORD-LOCK		8
1.10	O-ring	910006	D23	*	1
2	Hex. socket screw	91105	M16x70-8.8 DIN 912		4
	*) Are included in seal set				

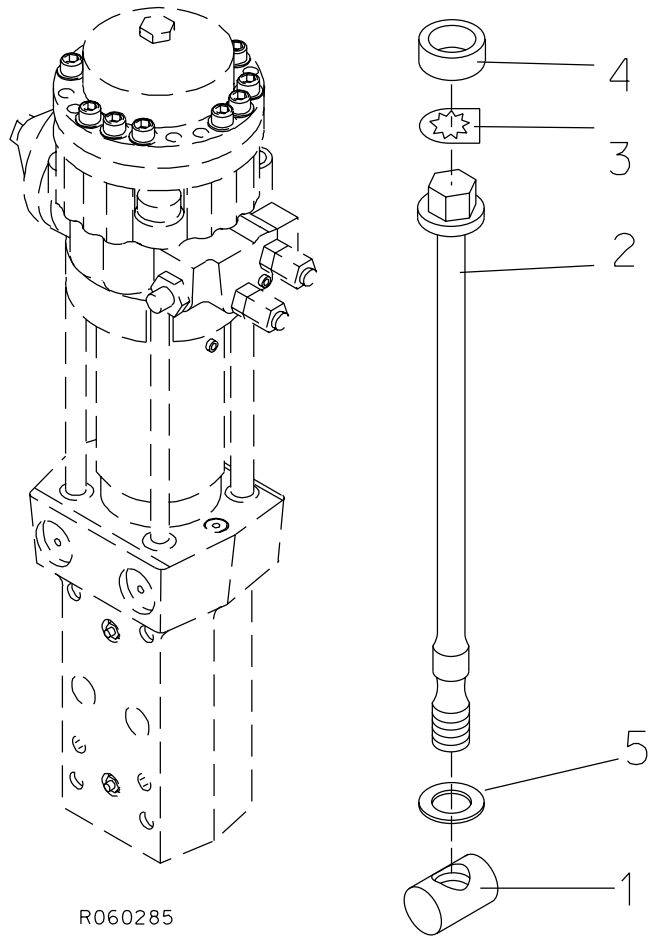
6. PRESSURE ADJUSTING VALVE S 25 N



R060284

Item	Description	Part no.	Specification	Note	Qty
1	Pressure adjusting spool	300304			1
2	Spring housing	400309			1
3	Shim plate	41793	S=1		X
4	Shim plate	41794	S=0.5		X
5	Flange plug	90401	R3/4		1
6	Seal	911010	D22	*	1
7	Spring	920008	D26x65		1
	*) Are included in seal set				

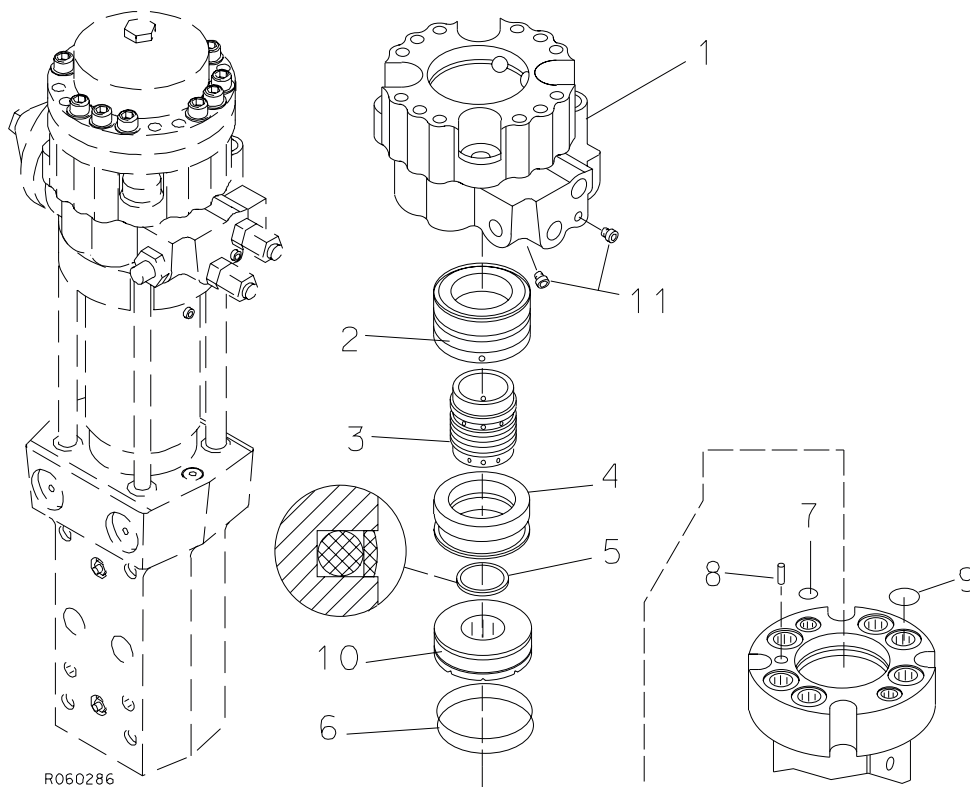
7. TIE ROD S 25 N



R060285

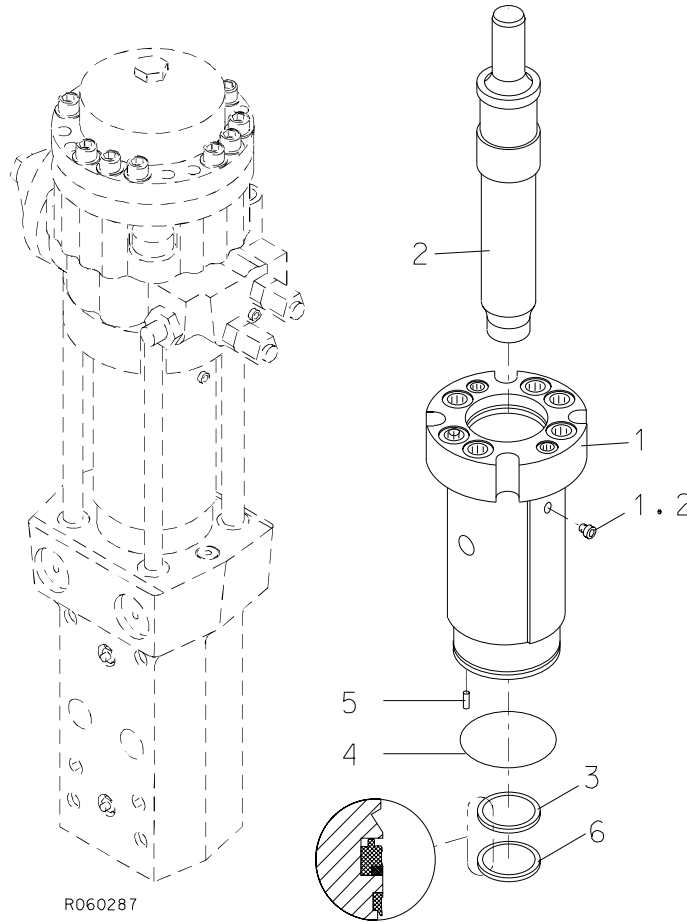
Item	Description	Part no.	Specification	Note	Qty
1	Tie rod nut	300340			4
2	Tie rod	200213			4
3	Lock plate	400265			4
4	Rubber ring	400275			4
5	Washer	903000	31 DIN 6916		4

8. VALVE BODY AND DISTRIBUTOR S 25 N



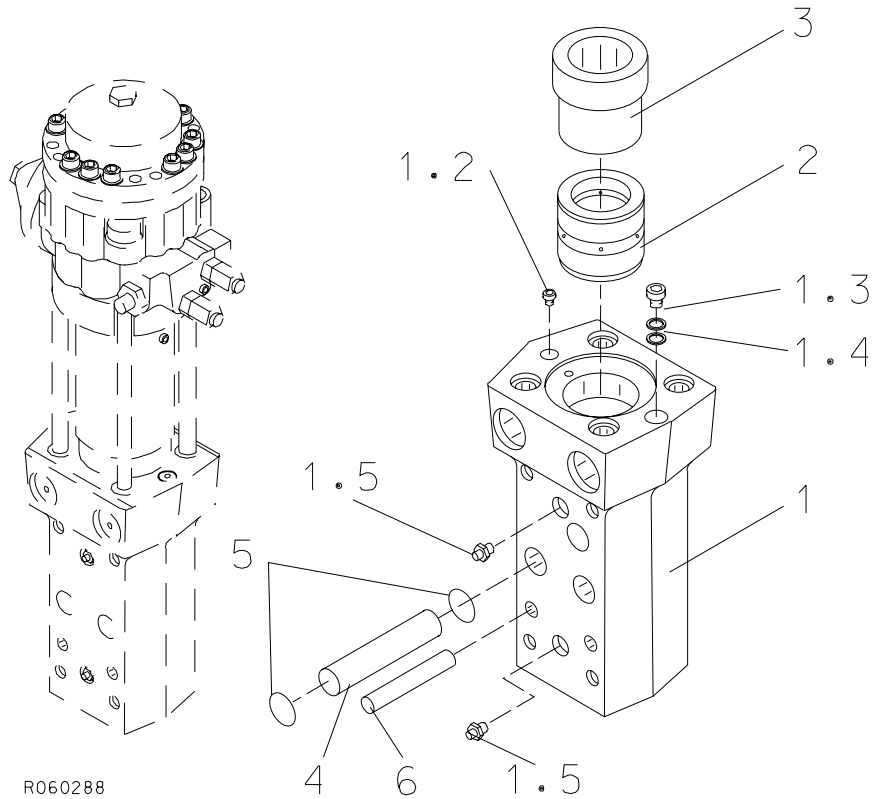
Item	Description	Part no.	Specification	Note	Qty
1	Valve body (incl. part 11)	100225			1
2	Assembly ring	111141			1
3	Distributor	111140			1
4	Slide ring	200252			1
5	Seal	911005	D50	*	1
6	O-ring	90005	D105	*	2
7	O-ring	90001	D20	*	2
8	Parallel pin	90357	8m6x24 DIN 6325		1
9	O-ring	90017	D34	*	6
10	Steering ring	200251			1
11	Flange plug	90403	R1/4		2
	*) Are included in seal set				

9. CYLINDER AND PISTON S 25 N



Item	Description	Part no.	Specification	Note	Qty
1	Cylinder (incl. part 1.2)	109959			1
1.2	Flange plug	90403	R1/4		1
2	Piston	106018			1
3	Seal	911004	D70	*	1
4	O-ring	910010	D134	*	1
5	Parallel pin	90357	8m6x24 DIN 6325		1
6	Wiper	913004	D70	*	1
	*) Are included in seal set				

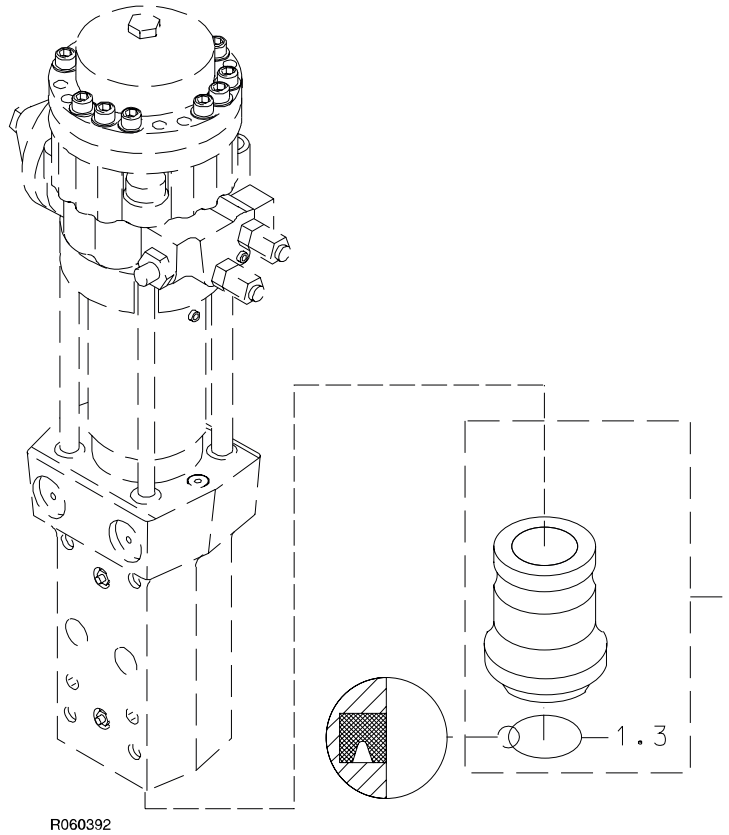
10. FRONT HEAD S 25 N



R060288

Item	Description	Part no.	Specification	Note	Qty
1	Front head (incl. parts 1.2-1.5)	106006			1
1.2	Flange plug	90444	R3/8		1
1.3	Flange plug	90424	R1/2		1
1.4	Lock washer	91010	M20 NORD-LOCK		1
1.5	Grease nipple	90201	R1/8		2
2	Upper tool bushing	300308			1
3	Thrust ring	106016			1
4	Tool retaining pin	106114	D36		2
5	O-ring	94087	D36	*	4
6	Split pin	904007			2
	*) Are included in seal set				

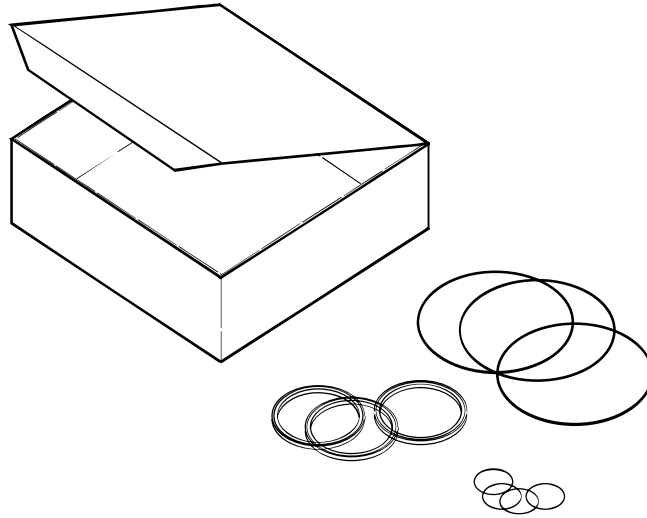
11. LOWER TOOL BUSHING S 25 N



R060392

Item	Description	Part no.	Specification	Note	Qty
1	Lower tool bushing (incl. part 1.3)	109994			1
1.3	Seal	911006	D70	*	1
	*) Are included in seal set				

12. SEAL SET S 25 N



R060012

Item	Description	Part no.	Specification	Note	Qty
Kit	Seal set (incl. parts 1-15)	106586			1
1	Wiper	913004	D70		1
2	Seal	911004	D70		1
3	Seal	911005	D50		1
4	Seal	911010	D22		1
5	Seal	911006	D70		1
6	O-ring	90005	D105		2
7	O-ring	90017	D34		6
8	O-ring	90001	D20		2
9	O-ring	90032	D120		1
10	O-ring	90025	D85		1
11	O-ring	910006	D23		2
13	Usit-ring	90056	U8.7-14-1		2
14	O-ring	94087	D36		4
15	O-ring	910010	D134		1

SANDVIK TAMROCK CORP.
Breakers Lahti
Taivalkatu 8, P.O. Box 165, FIN-15101 Lahti, Finland
Phone Int. +358 205 44 161, Telefax Int. +358 205 44 160,
Internet <http://www.rammer.com>