

ENG 8/03

PARTS MANUAL
PMRB30NENG.803

PULVERIZER
RAMMER RB 30 N

Serial No.
RB30ND0062-UP

TABLE OF CONTENTS

1. Cylinder RB 30 N	4
2. Hydraulics RB 30 N	6
3. Body parts RB 30 N	8
4. Wear items RB 30 N	10

GENUINE RAMMER SPARE PARTS

Rammer genuine spare parts are designed and manufactured by using the latest technological knowledge and engineering skills. Rammer spare parts are made of the best available materials with the most advanced manufacturing techniques.

It is important that you use only genuine Rammer spare parts, to ensure easy operation, maintenance and repair of the product. Please note that eventual warranty claims will be handled only if you have used genuine Rammer parts in your Rammer.

LOCATION OF THE SERIAL NUMBER

It's important to make correct reference to the serial number of the product when ordering spare parts. Identification of serial number is the only proper means of maintaining and identifying parts for a specific product. The location of equipment serial number is pointed in "Operation and maintenance" manual.

SPARE PART ORDERS

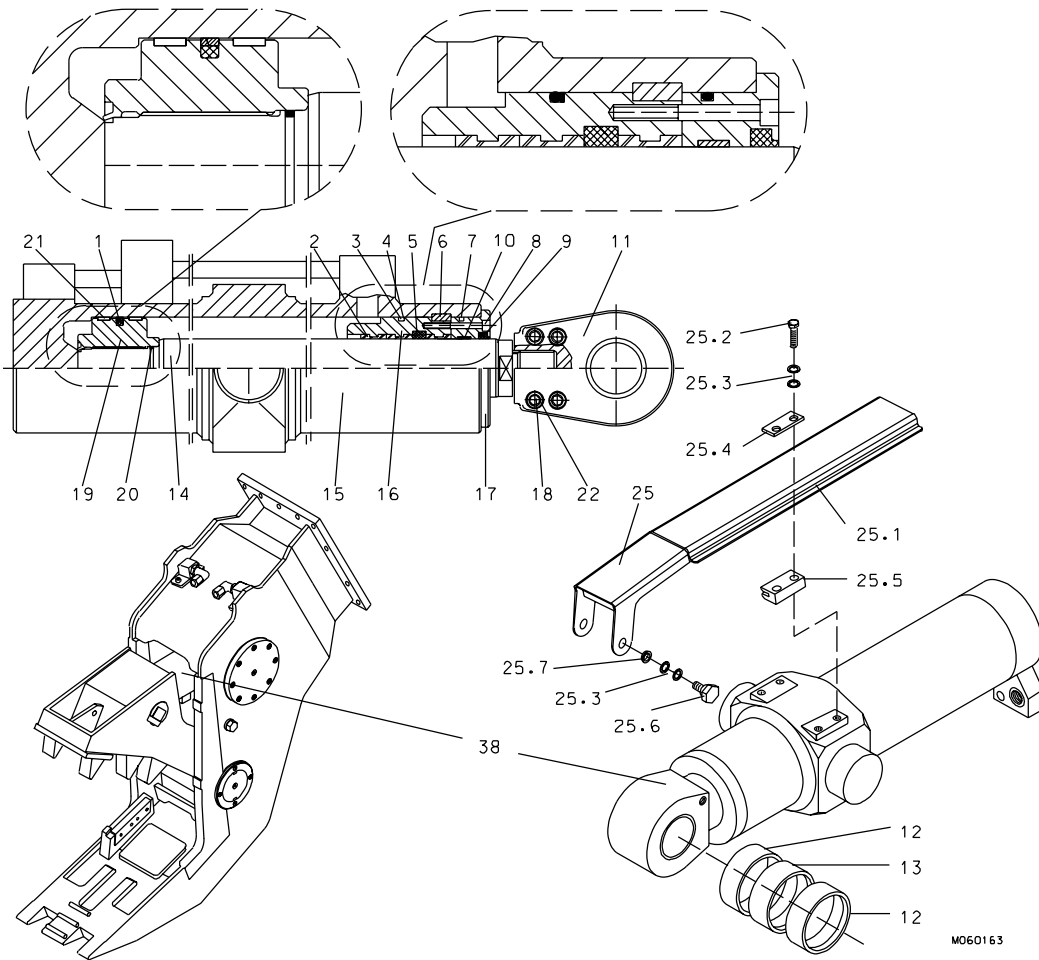
Quick spare part deliveries are secured by exact orders.

Required information:

- Name of customer and contact person
 - Order number (when available)
 - Delivery address
 - Mode of delivery (air mail etc.)
 - Required delivery date
 - Invoicing address
 - Model and serial number of the product
 - Name, number and required amount of spare parts
-

PARTS

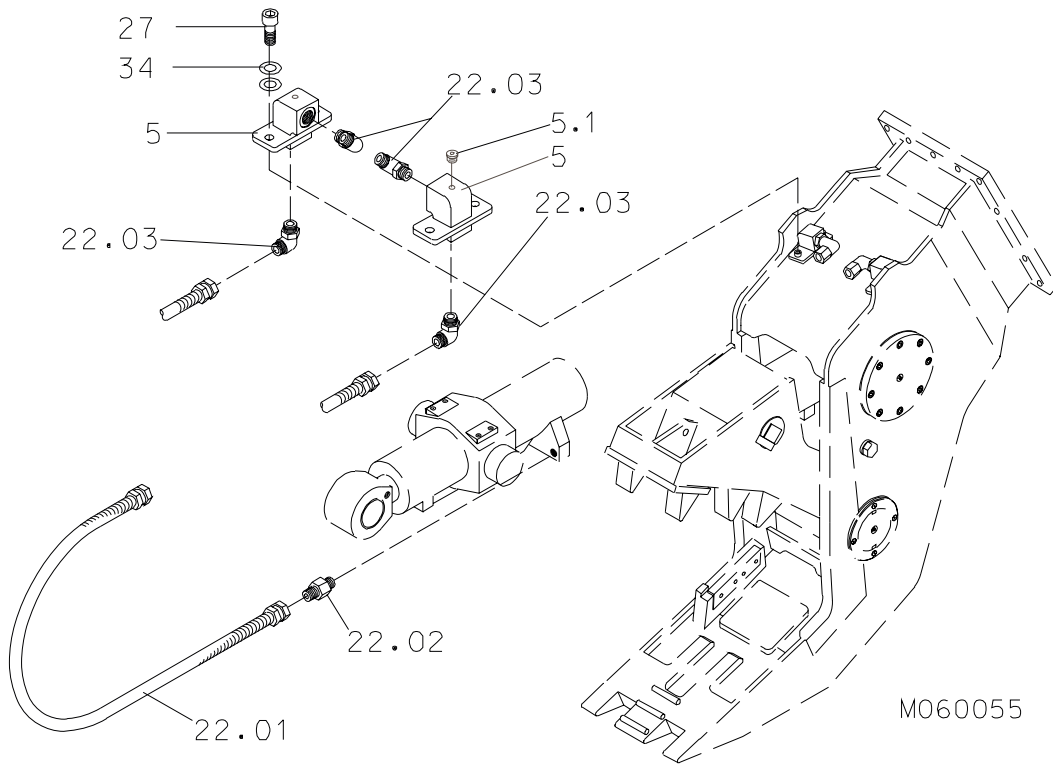
1. CYLINDER RB 30 N



Item	Description	Part no.	Specification	Note	Qty
38	Hydraulic cylinder (incl. parts 1-22 and 25)	951264			1
1	Seal	903401	D200		1
2	Steering ring	902602	D110		3
3	O-ring	902697	D190		1
4	Supporting ring	902698	D200		1
5	Seal	902605			1
6	Lock ring	902699			1
7	O-ring	951244	D194		1
8	Hex. socket screw	91107	M12x90-8.8 DIN 912		4
9	Wiper	951015	D110		1
10	Slide ring	902523	D110		1
11	Swivel bushing	902610			1
12	Sliding bearing	902611	WB800 100/105-50		2
13	Sliding bearing	902612	WB800 100/105-30		1
14	Piston rod	951014			1

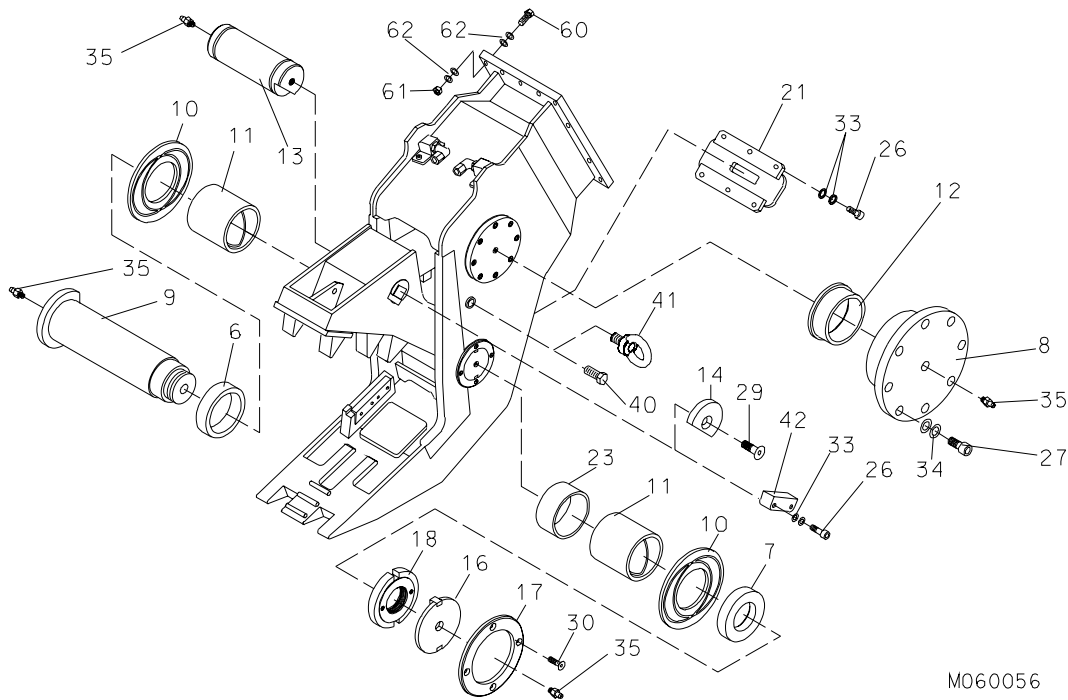
Item	Description	Part no.	Specification	Note	Qty
15	Cylinder body	902702			1
16	Guide	902703			1
17	Ring	902704			1
18	Hex. socket screw	902706	M16x110-8.8 DIN 912		4
19	Piston	951017			1
20	O-ring	90025	D85		1
21	Guide	951016			2
22	Lock washer	90597	M16 NORD-LOCK		8
23	Seal set for cylinder	950348			1
25	Cylinder shield (incl. parts 25.1-25.7)	154446			1
25.1	Shield plate	154445			1
25.2	Hex. screw	90544	M16x60-8.8 ISO 4014		4
25.3	Lock washer	90597	M16 NORD-LOCK		6
25.4	Support plate	140507			2
25.5	Slide plate	111811			2
25.6	Hex. screw	90514			2
25.7	Bushing	140511			2

2. HYDRAULICS RB 30 N



Item	Description	Part no.	Specification	Note	Qty
5	Elbow (incl. part 5.1)	140278			2
5.1	Flange plug	90403	G1/4		1
22.01	Hose assembly	901584			2
22.02	Adapter	901583	F40XS25-1		2
22.03	Elbow	901585	C40XS25-1		4
27	Hex. socket screw	91100	M16x40-8.8 DIN 912		4
34	Lock washer	90597	M16 NORD-LOCK		4

3. BODY PARTS RB 30 N



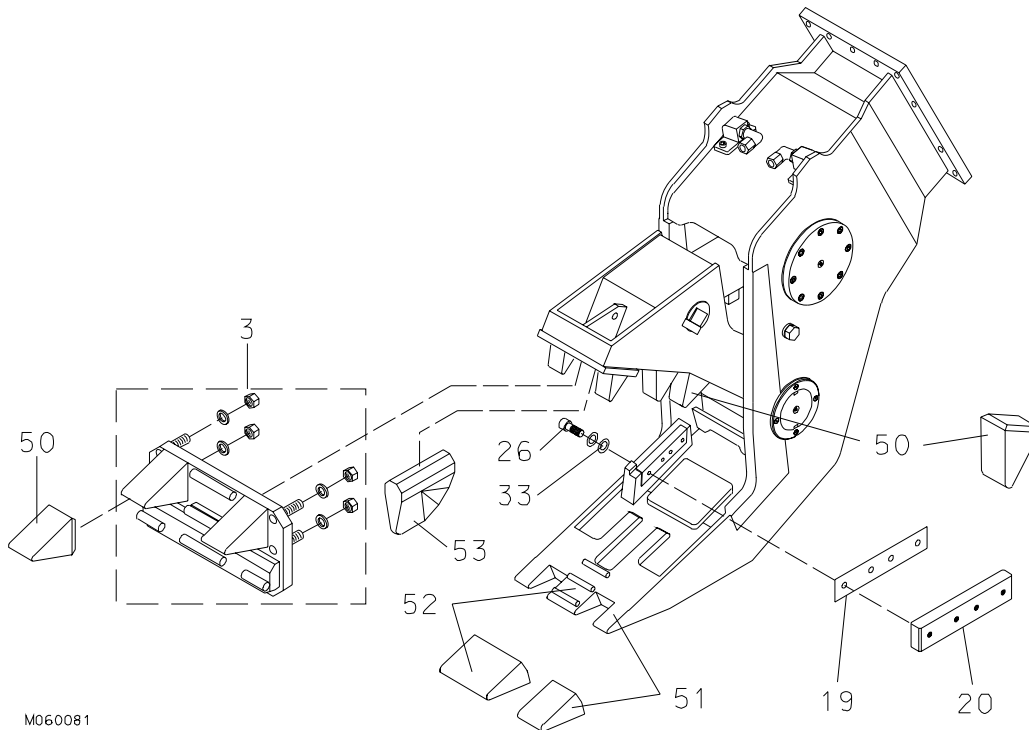
M060056

Item	Description	Part no.	Specification	Note	Qty
6	Bush	140116			1
7	Bush	140115			1
8	Cap	140035			2
9	Shaft	140119			1
10	Spacer plate	140118			2
11	Bush	140121			2
12	Bush	140038			2
13	Shaft	140039			1
14	Cover	140040			1
16	Cover	140042			1
17	Cover holder	140044			1
18	Axle nut	140117			1
21	Cover	110428			1
23	Bushing	140345			1
26	Hex. socket screw	90564	M12x40-8.8 DIN 912		8
27	Hex. socket screw	91100	M16x40-8.8 DIN 912		16
29	Hex. socket screw	901287	M20x40-8.8 DIN 7991		1
30	Hex. socket screw	901286	M10x25-8.8 DIN 7991		4
33	Lock washer	91012	M12 NORD-LOCK		8
34	Lock washer	90597	M16 NORD-LOCK		16
35	Grease nipple	90204	A M10x1		5

BODY PARTS RB 30 N

Item	Description	Part no.	Specification	Note	Qty
40	Hex. screw	901465	M36x40-8.8 DIN 933		1
41	Lifting eye	901464	M36 DIN 580		1
42	Plate	140524			1
54	Label set	141050			1
60	Hex. screw	90589	M24x110-12.9 DIN 931		14
61	Lock nut	90507	M24-12 DIN 985		14
62	Washer	90511	25 DIN 6916		28

4. WEAR ITEMS RB 30 N



Item	Description	Part no.	Specification	Note	Qty
3	Crushing plate	111766			1
19	Shim plate	140028			2
20	Cutting blade	140029			2
26	Hex. socket screw	90564	M12x40-8.8 DIN 912		8
33	Lock washer	91012	M12 NORD-LOCK		8
50	Crushing tooth	140017			5
51	Side tooth	140020			2
52	Front tooth	140019			1
53	Breaking tooth	140025			1

Sandvik Tamrock Corp., Breakers Lahti
Taivalkatu 8, P.O. Box 165, FIN-15101 Lahti, Finland
Phone Int. +358 205 44 161, Telefax Int. +358 205 44 160
www.rammer.com