

ENG 8/05

PARTS MANUAL
PMRD7DENG.805

CUTTER-CRUSHER
RAMMER RD 7

Serial No.
RD7RA011-UP

TABLE OF CONTENTS

1. Cylinder	4
2. Hydraulics	6
3. Brake	8
4. Hydraulic motor	9
5. Slewing ring	10
6. Body parts	11
7. Wear item	12
8. Water Jet Kit	13

GENUINE RAMMER SPARE PARTS

Rammer genuine spare parts are designed and manufactured by using the latest technological knowledge and engineering skills. Rammer spare parts are made of the best available materials with the most advanced manufacturing techniques.

It is important that you use only genuine Rammer spare parts, to ensure easy operation, maintenance and repair of the product. Please note that eventual warranty claims will be handled only if you have used genuine Rammer parts in your Rammer.

LOCATION OF THE SERIAL NUMBER

It's important to make correct reference to the serial number of the product when ordering spare parts. Identification of serial number is the only proper means of maintaining and identifying parts for a specific product. The location of equipment serial number is pointed in "Operation and maintenance" manual.

SPARE PART ORDERS

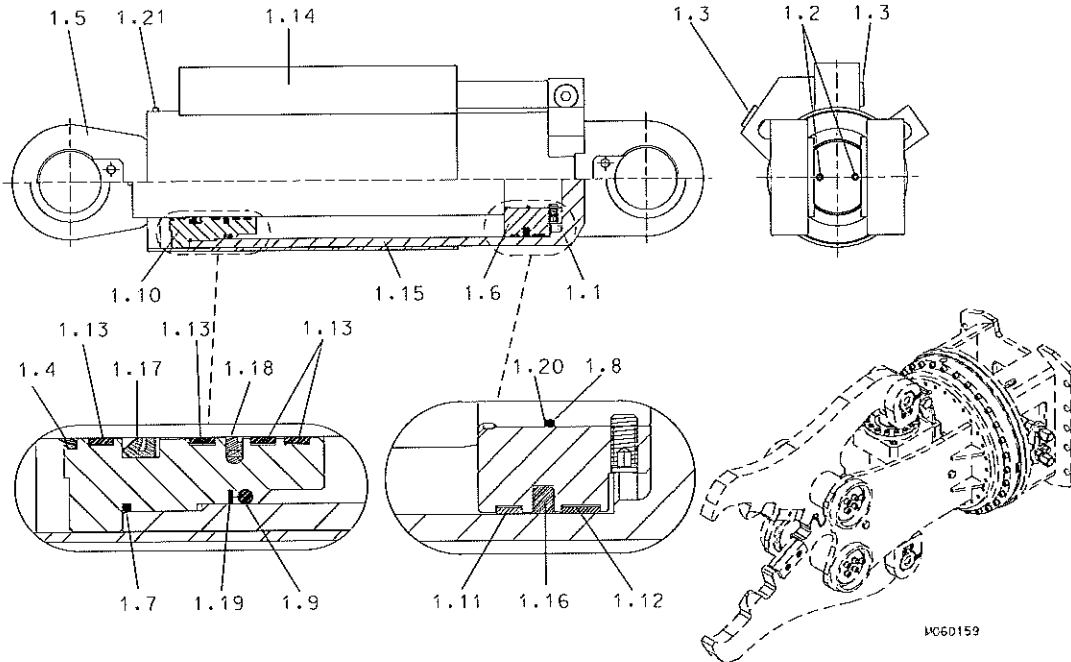
Quick spare part deliveries are secured by exact orders.

Required information:

- Name of customer and contact person
 - Order number (when available)
 - Delivery address
 - Mode of delivery (air mail etc.)
 - Required delivery date
 - Invoicing address
 - Model and serial number of the product
 - Name, number and required amount of spare parts
-

PARTS

1. CYLINDER

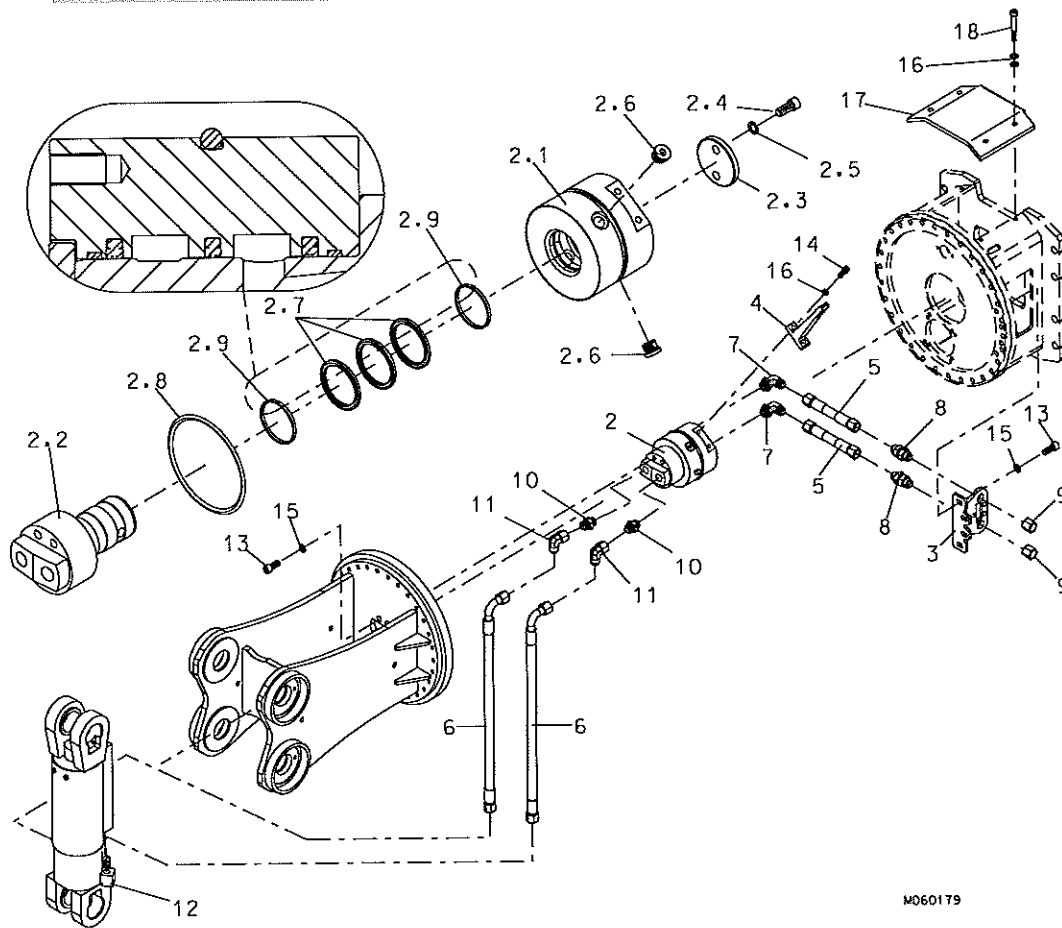


Item	Description	Part no.	Specification	Note	Qty
1	Hydraulic cylinder (incl. parts 1.1-1.21)	951394			1
1.1	Hex. socket screw	902674	M10x20-45H ISO 4026		3
1.2	Hex. socket screw	951403	M8x35-45H ISO 4026		2
1.3	Flange plug	90424	G1/2		2
1.4	Wiper	950334			1
1.5	Piston rod	950315			1
1.6	Piston	950317			1
1.7	O-ring	90023	D130		1
1.8	O-ring	902626	D60		1
1.9	O-ring	902632	D119		1
1.10	Guide	950316			1
1.11	Steering ring	951396			1
1.12	Steering ring	951397			1
1.13	Steering ring	951398			4
1.14	Shield	154199			1
1.15	Cylinder body	950314			1
1.16	Seal	951395			1
1.17	Seal	951399			1
1.18	Seal	951400			1
1.19	Supporting ring	951402			1

Cylinder

Item	Description	Part no.	Specification	Note	Qty
1.20	Supporting ring	951407			1
1.21	Hex. socket screw	951404	M16x30-8.8 ISO 4762		4
2	Seal set for cylinder	951405			1

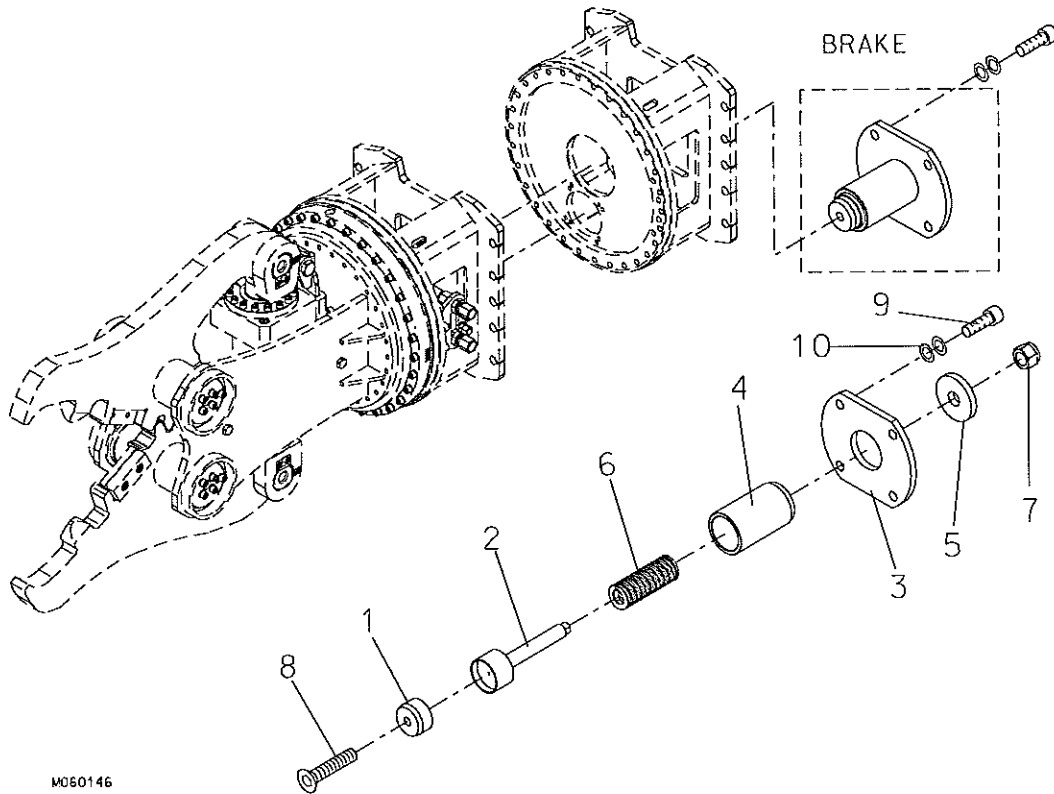
2. HYDRAULICS



Item	Description	Part no.	Specification	Note	Qty
2	Bulkhead union (incl. parts 2.1-2.9)	112953			1
2.1	Body	112955			1
2.2	Spool	112954			1
2.3	Cover	112956			1
2.4	Hex. socket screw	91045	M12x30-8.8 ISO 4762		2
2.5	Lock washer	91012	M12 NORD-LOCK		2
2.6	Flange plug	90424	G1/2		2
2.7	Seal	950184			3
2.8	O-ring	950185	D154		1
2.9	Guide ring	951277			2
2.10	Seal set for bulkhead union	153526			1
3	Support	113547			1
4	Support	112974			1
5	Hose assembly	151210			2
6	Hose assembly	151211			2
7	Elbow	901290			2
8	Bulkhead union	90493			2

Item	Description	Part no.	Specification	Note	Qty
9	Cap	93199			2
10	Adapter	901288			2
11	Elbow	90488			2
12	Hydraulic cylinder	951394			1
13	Hex. socket screw	91100	M16x40-8.8 ISO 4762		8
14	Hex. socket screw	90564	M12x40-8.8 ISO 4762		2
15	Lock washer	90597	M16 NORD-LOCK		8
16	Lock washer	91012	M12 NORD-LOCK		10
17	Shield plate	111621			2
18	Hex. socket screw	91045	M12x30-8.8 ISO 4762		8

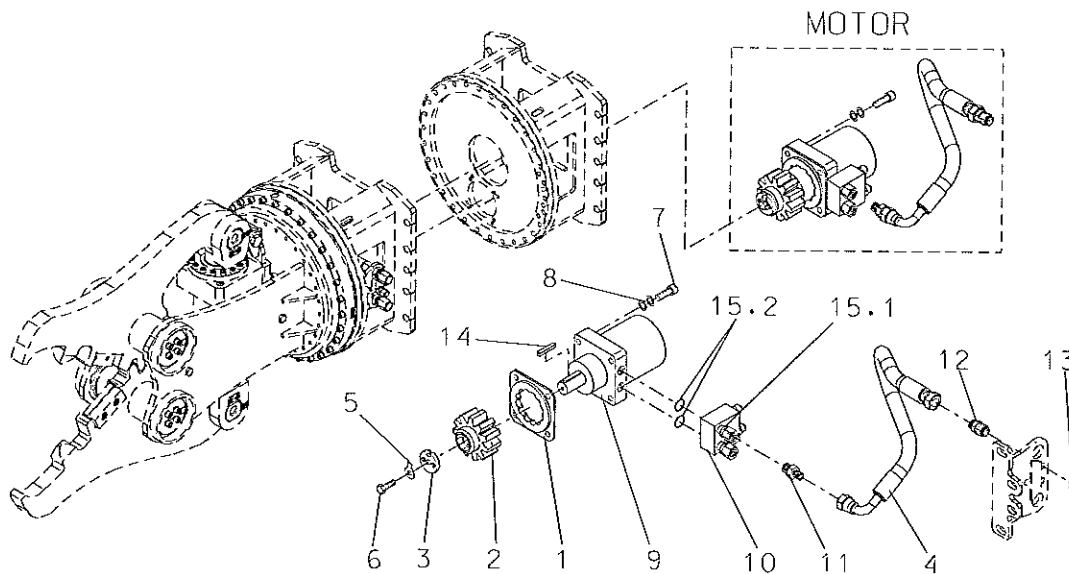
3. BRAKE



M060146

Item	Description	Part no.	Specification	Note	Qty
Kit	Brake (incl. parts 1-8)	153294			1
1	Wear plate	140436			1
2	Spool	153293			1
3	Plate	153297			1
4	Body	153341			1
5	Washer	153342			1
6	Spring	901662			1
7	Nut	90579	M20-8 ISO 7040		1
8	Hex. socket screw	901782	M6x30-8.8 DIN 7991		1
9	Hex. socket screw	91041	M12x60-8.8 ISO 4762		4
10	Lock washer	91012	M12 NORD-LOCK		4

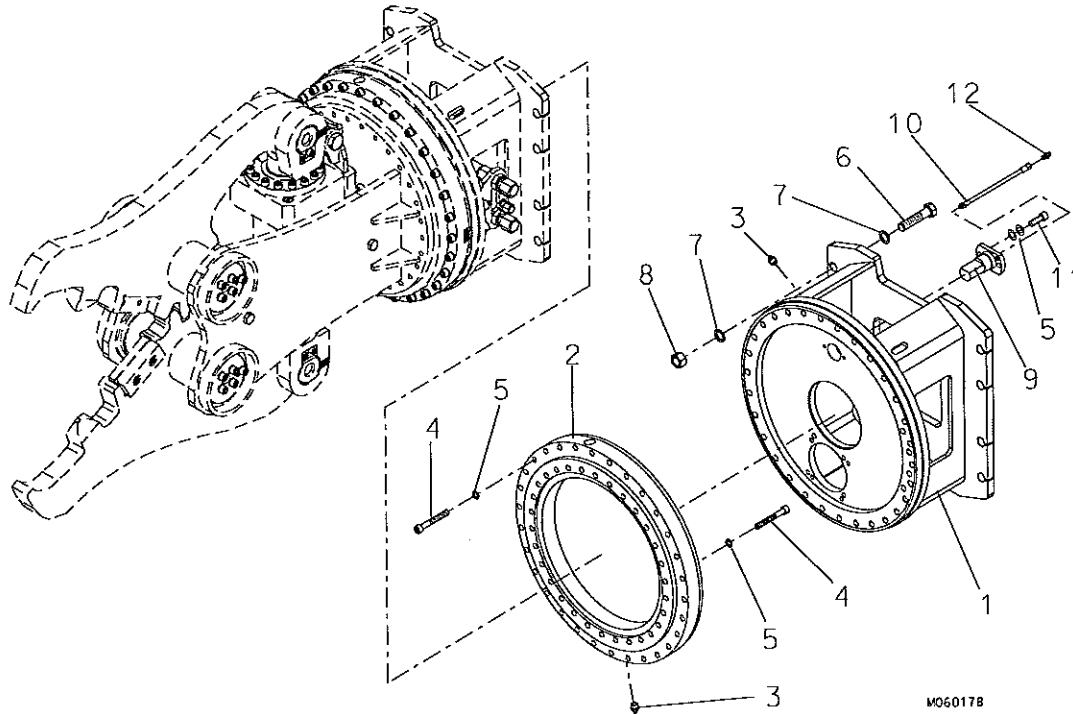
4. HYDRAULIC MOTOR



V060147

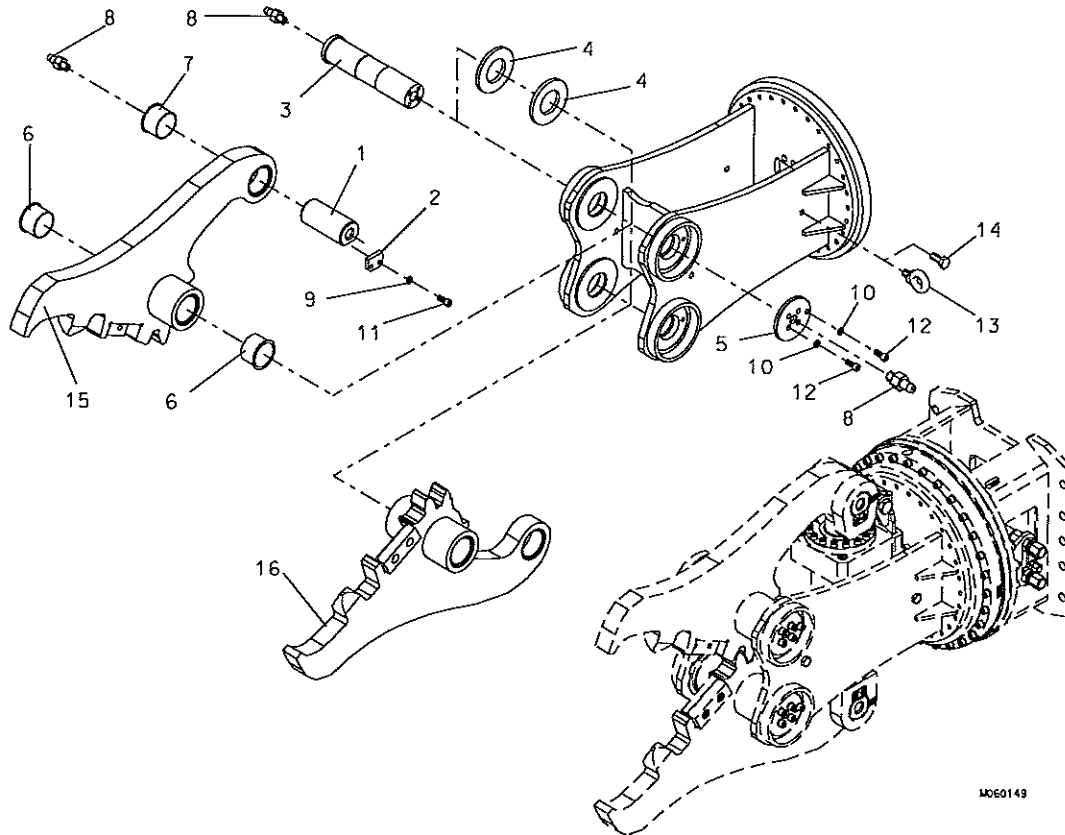
Item	Description	Part no.	Specification	Note	Qty
Kit	Hydraulic motor (incl. parts 1-14)	113288			1
1	Flange	110910			1
2	Cylindrical gear	113289			1
3	Washer	140052			1
4	Hose assembly	111643			2
5	Washer	902925	8.4 DIN 93		1
6	Hexagon screw	903155	M8x30-8.8 ISO 4017		1
7	Hex. socket screw	91041	M12x60-8.8 ISO 4762		4
8	Lock washer	91012	M12 NORD-LOCK		4
9	Hydraulic motor	951283			1
10	Pressure adjusting valve (incl. parts 15.1 and 15.2)	903153			1
11	Adapter	902967			2
12	Bulk head union	93239			2
13	Cap	93234			2
14	Key	903156			1
15.1	O-ring	950264	D20		2
15.2	Usit-ring	911041	D22		2

5. SLEWING RING



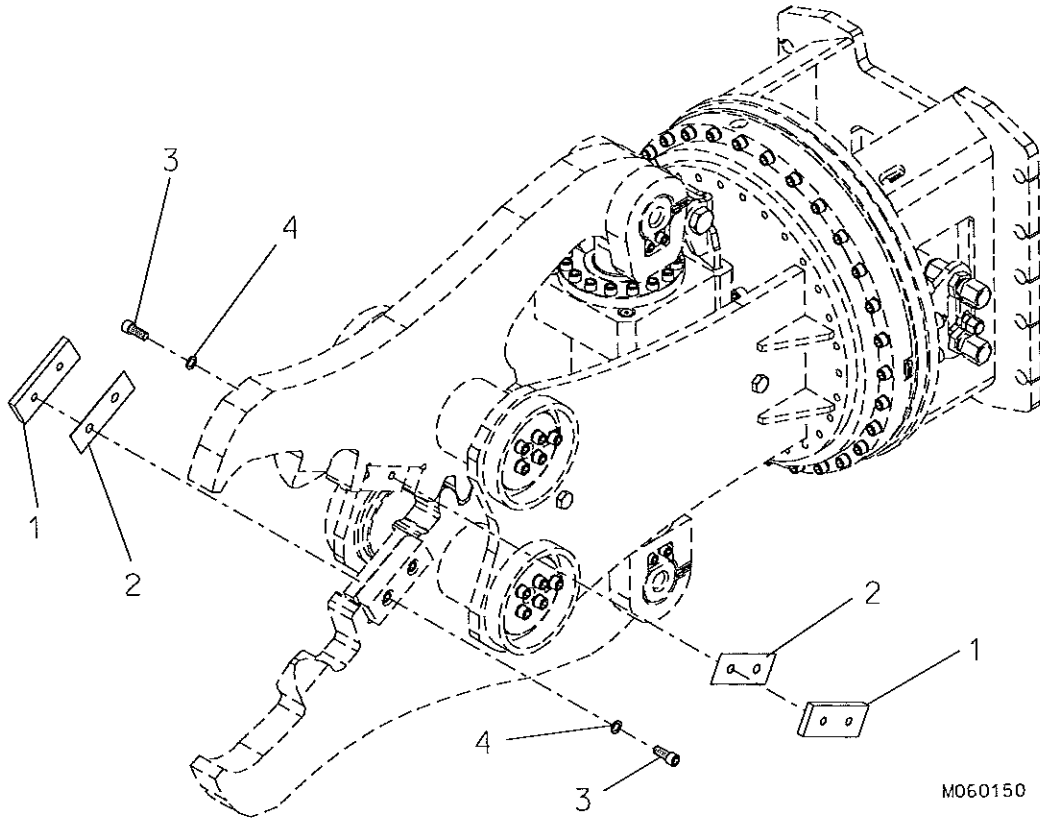
Item	Description	Part no.	Specification	Note	Qty
1	Mounting bracket	112960			1
2	Slewing ring	950187			1
3	Grease nipple	90204	M10x1 DIN 71412-T1 A		3
4	Hex. socket screw	950285	M12x90-12.9 ISO 4762		60
5	Lock washer	91012	M12 NORD-LOCK		62
6	Hexagon screw	91022	M20x90-8.8 ISO 4014		8
7	Lock washer	91010	M20 NORD-LOCK		16
8	Lock nut	91017	M20-8 ISO 4032		8
9	Quide	111417			1
10	Hose assembly	111637			1
11	Hex. socket screw	91045	M12x30-8.8 DIN 912		2
12	Adapter	903148			1

6. BODY PARTS



Item	Description	Part no.	Specification	Note	Qty
1	Shaft	113238			2
2	Bar	153112			2
3	Shaft	153014			2
4	Spacer	153659			4
5	Nut	113241			2
6	Sliding bear	950181	SKS BRM 80TFF 70758550		4
7	Sliding bear	950182	SKS BRM 80TFF 70758550		2
8	Grease nipple	90204	M10x1 DIN 71412-T1 A		6
9	Lock washer	91037	M10 NORD-LOCK		4
10	Lock washer	91012	M12 NORD-LOCK		10
11	Hex. socket screw	90504	M10x30-8.8 ISO 4762		4
12	Hex. socket screw	91045	M12x30-8.8 ISO 4762		10
13	Lifting eye	951313	RUD VRS-F-M16		2
14	Hexagon screw	90514	M16x30-8.8 ISO 4017		4
15	Jaw 1 (incl. part 6)	153524			1
16	Jaw 2 (incl. part 6)	153525			1
17	Label set	151464			1

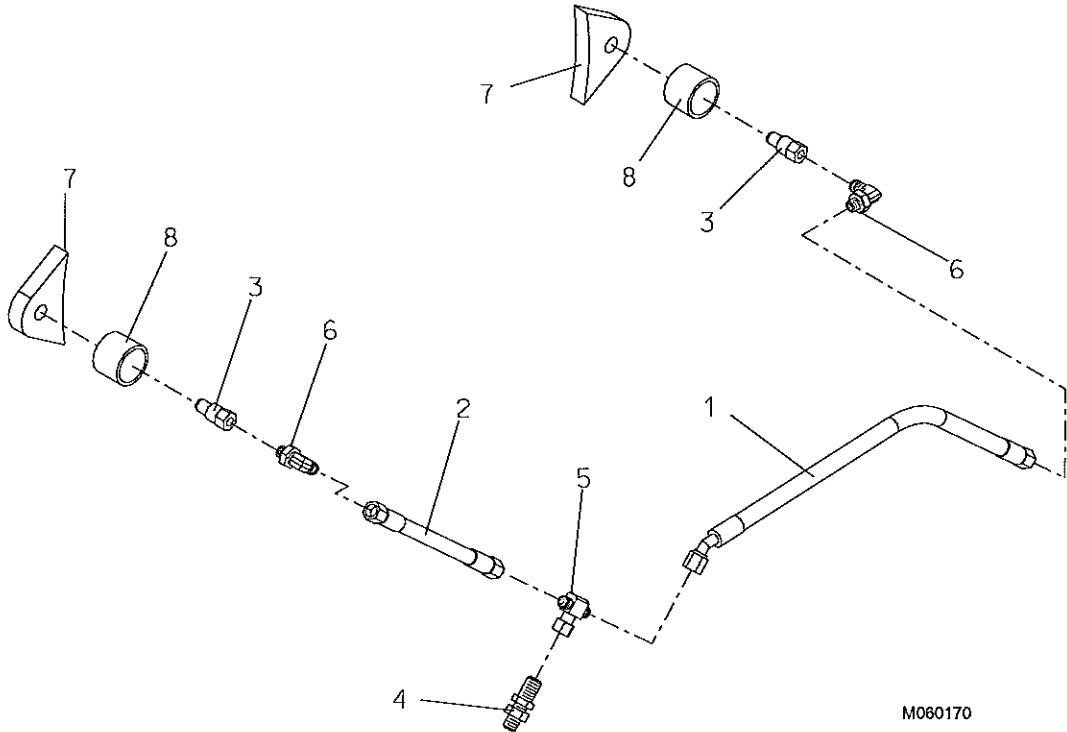
7. WEAR ITEM



M060150

Item	Description	Part no.	Specification	Note	Qty
1	Cutting blade	153019			2
2	Shim plate	153119			2
3	Hex. socket screw	91045	M12x30-8.8 ISO 4762		4
4	Lock washer	91012	M12 NORD-LOCK		4

8. WATER JET KIT



M060170

Item	Description	Part no.	Specification	Note	Qty
1	Hose assembly	950208	L=610 mm		1
2	Hose assembly	950207	L=240 mm		1
3	Nozzle	950206			2
4	Bulkhead union	950136			2
5	Union tee	950209			1
6	Elbow	93054			2
7	Plate	112345			2
8	Bushing	112346			2

[A series of approximately 25 horizontal lines for writing, with a dashed line at the top.]

A series of 24 horizontal lines for writing.

Sandvik Tamrock Corp., Breakers Lahti
Taivalkatu 8, P.O. Box 165, FIN-15101 Lahti, Finland
Phone Int. +358 205 44 161, Telefax Int. +358 205 44 160
www.rammer.com