

Original instructions

Rammer[®]

ENG 2/14

PARTS MANUAL
PM222SENG.214

HYDRAULIC HAMMER
RAMMER 222

STD

Serial No.

222A0005-UP

R A M M E R H I T S H A R D E R

TABLE OF CONTENTS

1. Housing unit	4
2. Valve body and distributor	6
3. Accumulator	8
4. Body parts	9
5. Lower tool bushing	10
6. Tool	11
7. Seal set	12
8. Service kit	14

GENUINE RAMMER SPARE PARTS

Rammer genuine spare parts are designed and manufactured by using the latest technological knowledge and engineering skills. Rammer spare parts are made of the best available materials with the most advanced manufacturing techniques.

It is important that you use only genuine Rammer spare parts, to ensure easy operation, maintenance and repair of the product. Please note that eventual warranty claims will be handled only if you have used genuine Rammer parts in your Rammer.

LOCATION OF THE SERIAL NUMBER

It's important to make correct reference to the serial number of the product when ordering spare parts. Identification of serial number is the only proper means of maintaining and identifying parts for a specific product. The location of equipment serial number is pointed in "Operation and maintenance" manual.

SPARE PART ORDERS

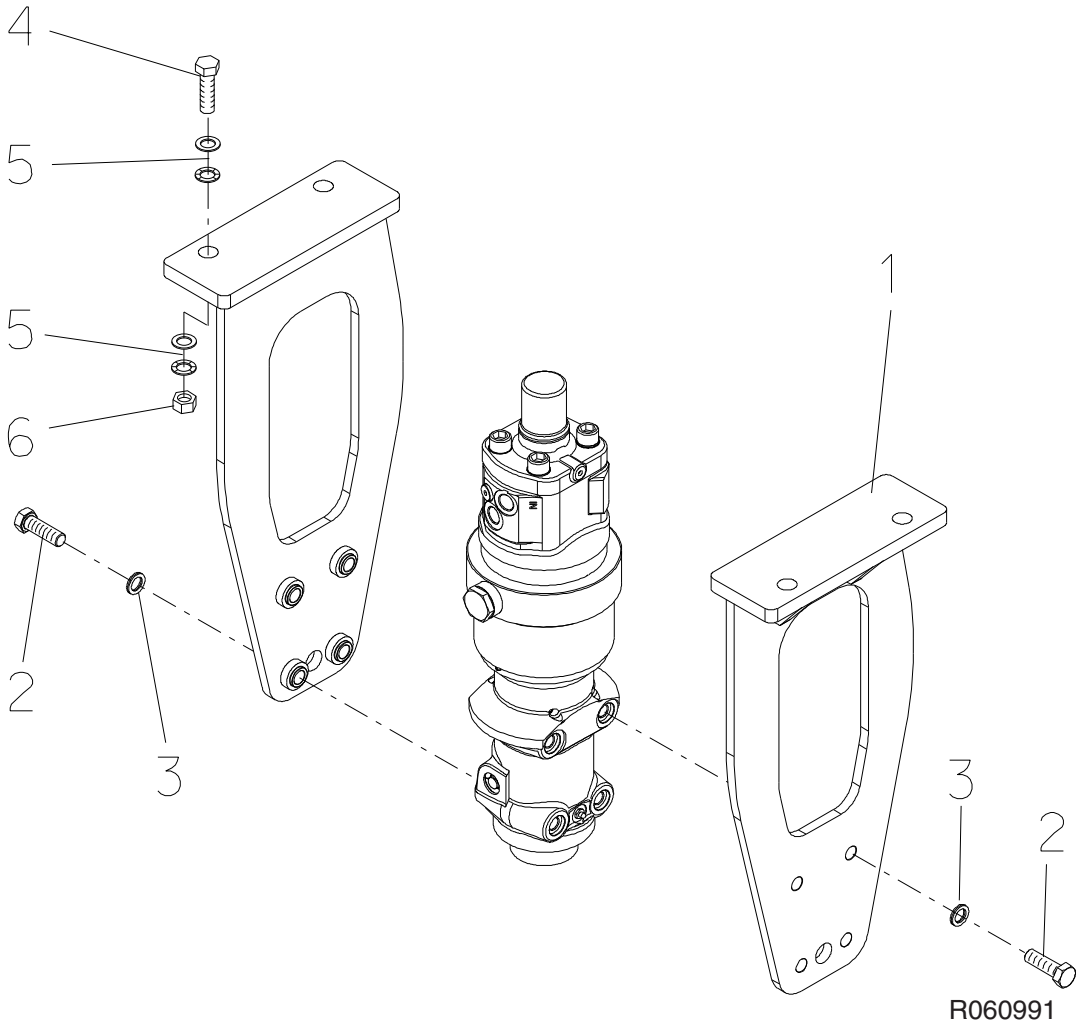
Quick spare part deliveries are secured by exact orders.

Required information:

- Name of customer and contact person
 - Order number (when available)
 - Delivery address
 - Mode of delivery (air mail etc.)
 - Required delivery date
 - Invoicing address
 - Model and serial number of the product
 - Name, number and required amount of spare parts
-

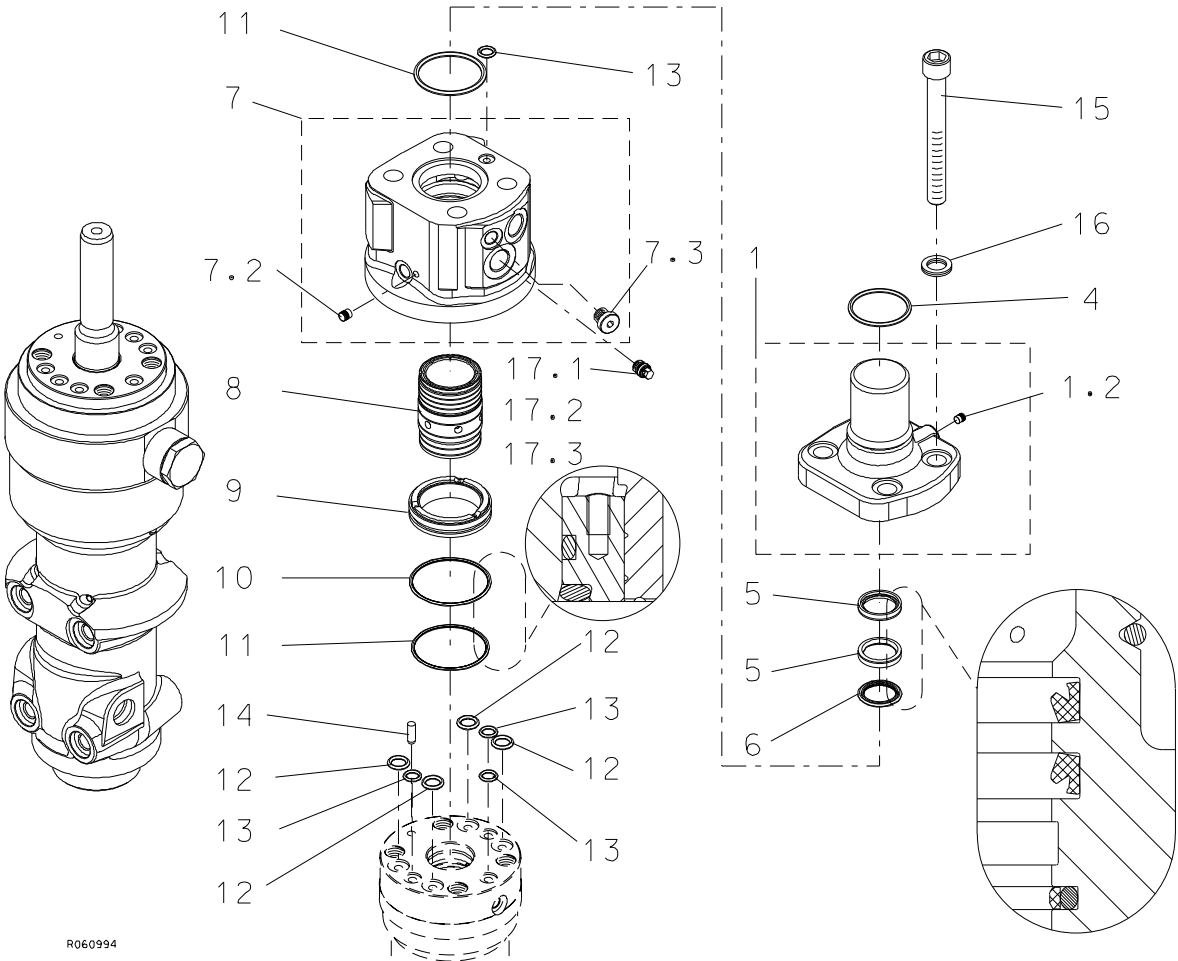
PARTS

1. HOUSING UNIT



Item	Description	Part no.	Specification	Note	Qty
1	Housing plates	165397			1
2	Hex. screw	900010	M16x50-10.9 ISO 4017		8
3	Lock washer	90597	M16 NORD-LOCK		8
4	Hex. screw	91027	M20x70-8.8 ISO 4014		4
5	Lock washer	91010	M20 NORD-LOCK		8
6	Nut	91017	M20-8 ISO 4032		4
20	Label set (incl. part 21)	170448			1
21	Safety label set	169400			1

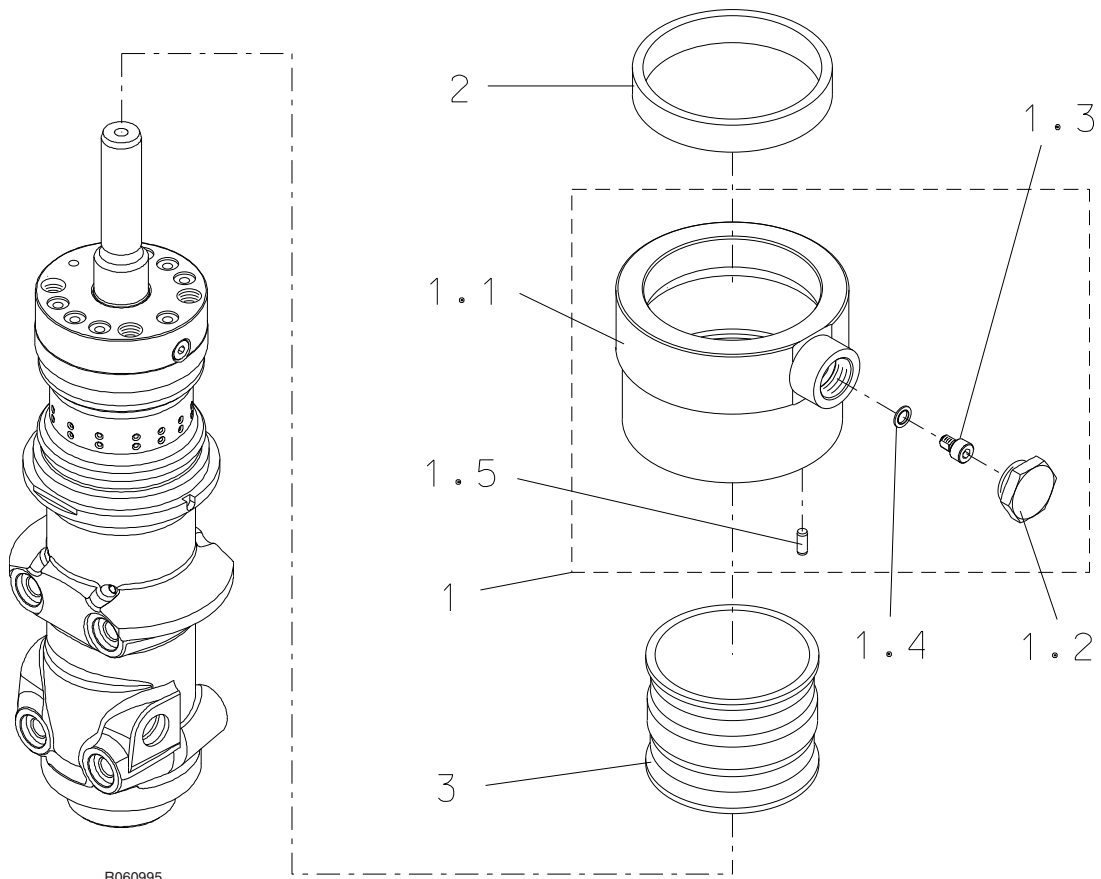
2. VALVE BODY AND DISTRIBUTOR



R060994

Item	Description	Part no.	Specification	Note	Qty
1	Cover (incl. part 1.2)	157206			1
1.2	Plug	915028			1
4	O-ring	90019	D49	*	1
5	Seal	951966		*	2
6	Seal	157208		*	1
7	Valve body (incl. parts 7.2-7.3)	157438			1
7.2	Plug	915028			1
7.3	Flange plug	90403	R1/4		1
8	Distributor	157205			1
9	Steering ring	157216			1
10	O-ring	952230	D63	*	1
11	O-ring	90083	D60	*	2
12	O-ring	90011	D14	*	4
13	O-ring	901199	D9	*	4
14	Parallel pin	90371	6m6x18 ISO 8734		1
15	Hex. socket screw	951941	M16x140-10.9 ISO 4762		4
16	Lock washer	90597	M16 NORD-LOCK		4
17.1	Nozzle kit 1	166386	Incl. nozzles D2.3, D2.6, D2.9 and D0		1
17.2	Nozzle kit 2	166390	Incl. nozzles D3.2, D3.5, D3.8, D4.1 and D0		1
17.3	Nozzle kit 3	166395	Incl. nozzles D4.4, D4.7, D5.0 and D0		1
	*) Are included in seal set				

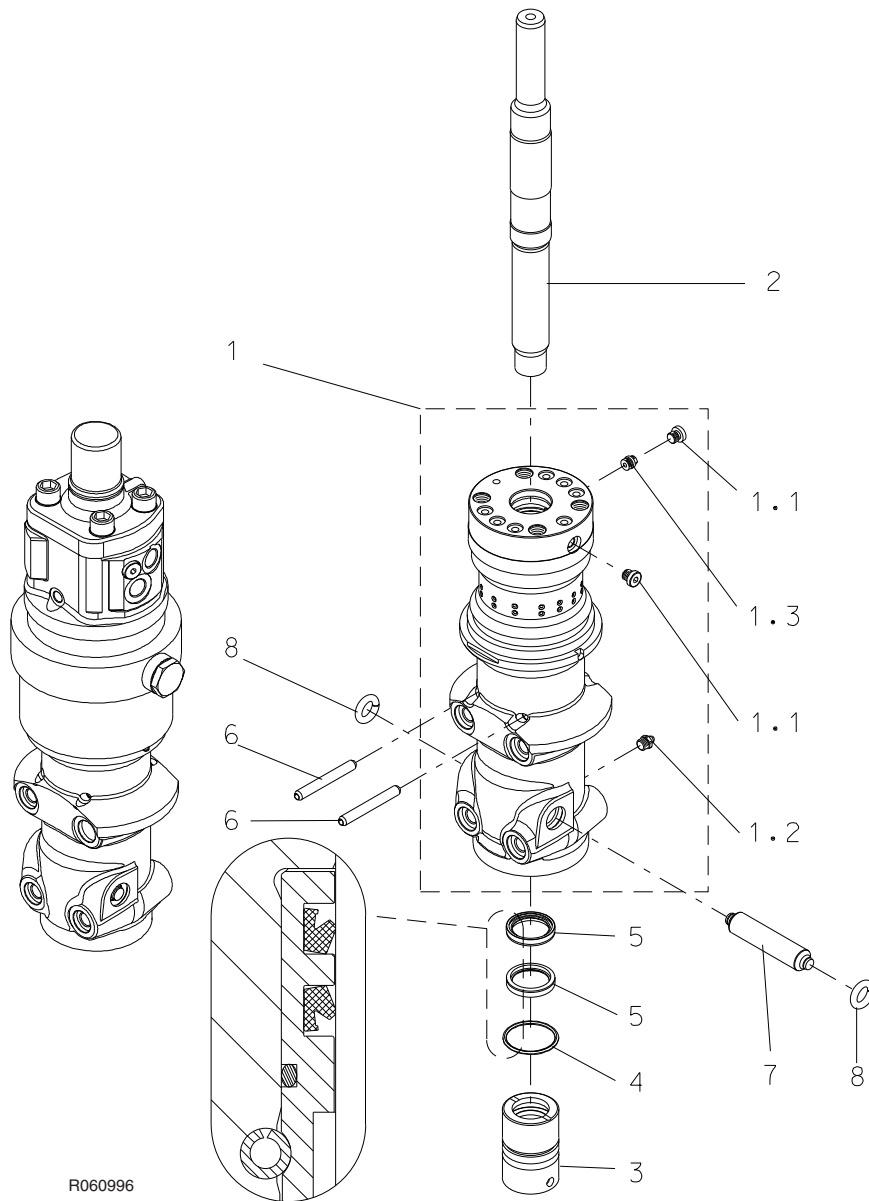
3. ACCUMULATOR



R060995

Item	Description	Part no.	Specification	Note	Qty
1	Accumulator (incl. parts 1.1-1.5)	159846			1
1.1	Body	157200			1
1.2	Shield plug	400300			1
1.3	Filling plug	42074			1
1.4	Usit-ring	90056	8-13.9-1	*	1
1.5	Split pin	90327	6x17 ISO 8750		1
2	Support ring	157215			1
3	Membrane	113061			1
	*) Are included in seal set				

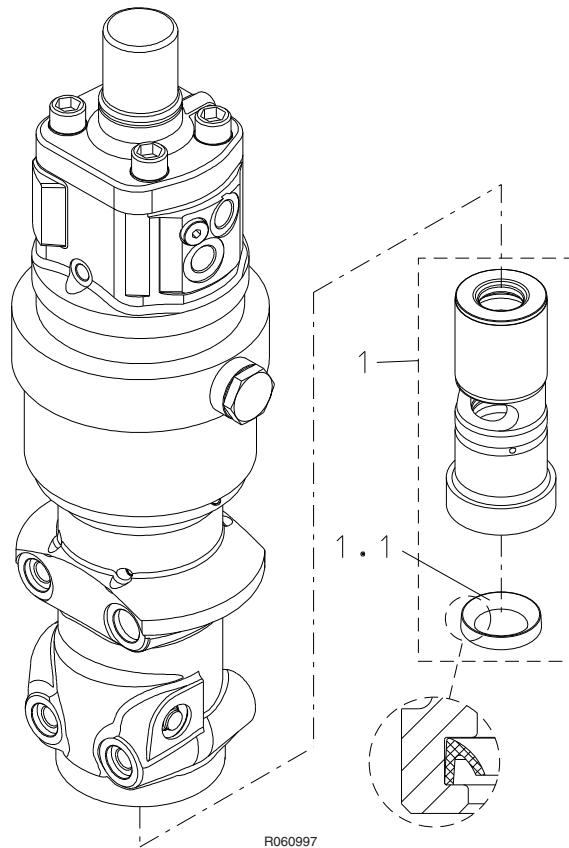
4. BODY PARTS



R060996

Item	Description	Part no.	Specification	Note	Qty
1	Cylinder (incl. parts 1.1-1.3)	159409			1
1.1	Flange plug	93203	R1/8		2
1.2	Grease nipple	90201	R1/8		1
1.3	Nozzle	159756			1
2	Piston	157199			1
3	Seal carrier	157198			1
4	O-ring	90019	D49	*	1
5	Seal	951369		*	2
6	Split pin	90338	8x80 ISO 8752		2
7	Tool retaining pin	159549			1
8	Rubber ring	157214		*	2
	*) Are included in seal set				

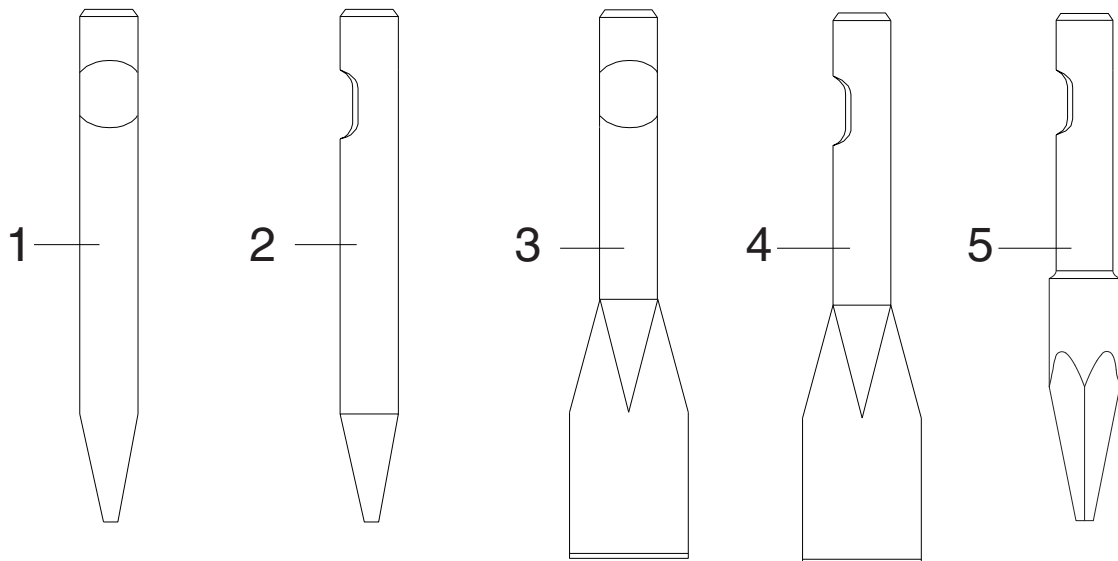
5. LOWER TOOL BUSHING



R060997

Item	Description	Part no.	Specification	Note	Qty
1	Lower tool bushing (incl. part 1.1)	159547			1
1.1	Seal	157211		*	1
	*) Are included in seal set				

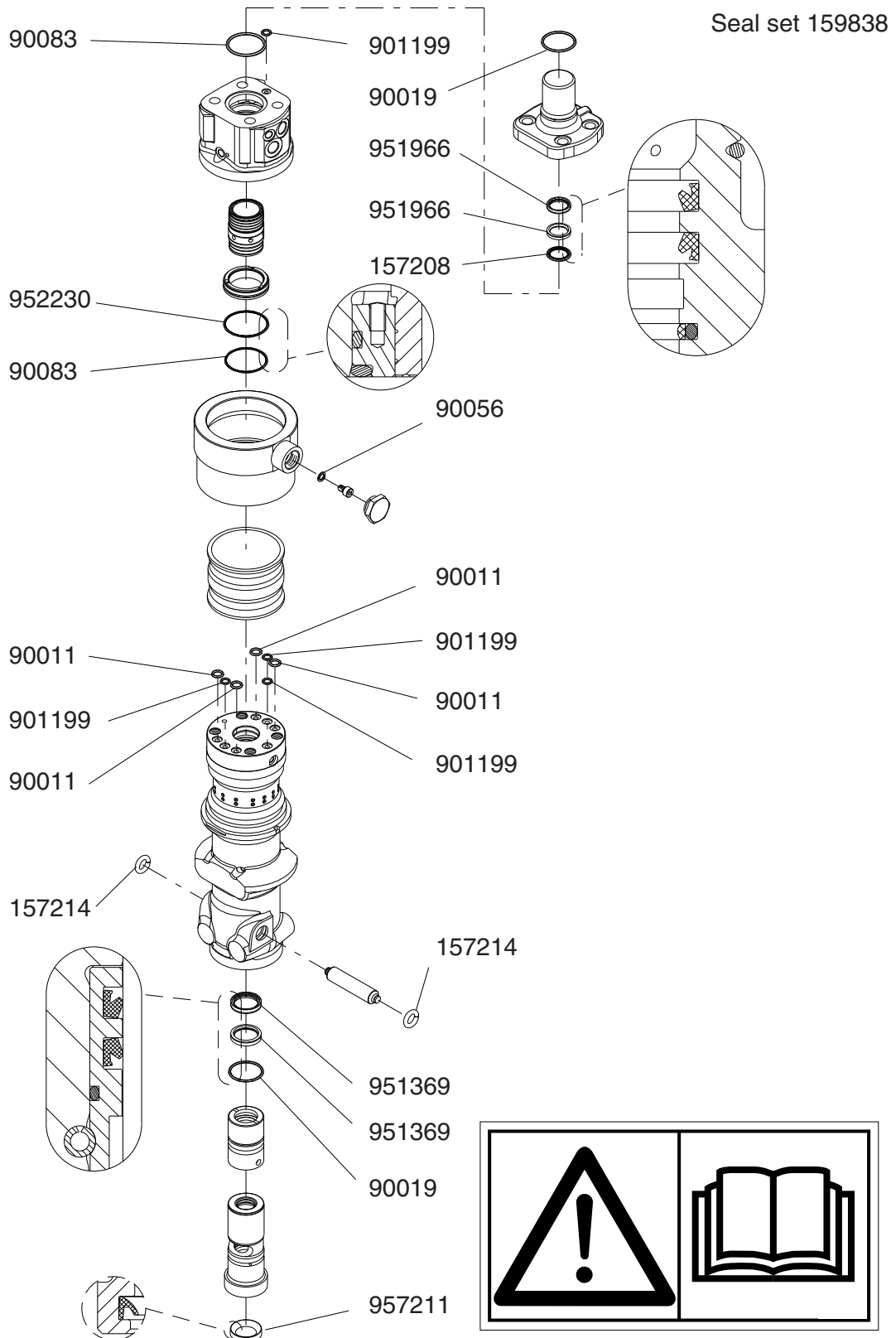
6. TOOL



R061237

Item	Description	Part no.	Specification	Note	Qty
1	Chisel	BH601	L = 405 mm, W = 4.1 kg, D = 42 mm		1
2	Moil point	BH603	L = 405 mm, W = 3.9 kg, D = 42 mm		1
3	Spade, parallel to boom	BH605	L = 420 mm, W = 4.1 kg, Width = 100 mm		1
4	Spade, transverse to boom	BH606	L = 420 mm, W = 4.1 kg, Width = 100 mm		1
5	Pyramid	BH603K3	L = 405 mm, W = 4.3 kg, D = 42 / 57 mm		1

7. SEAL SET

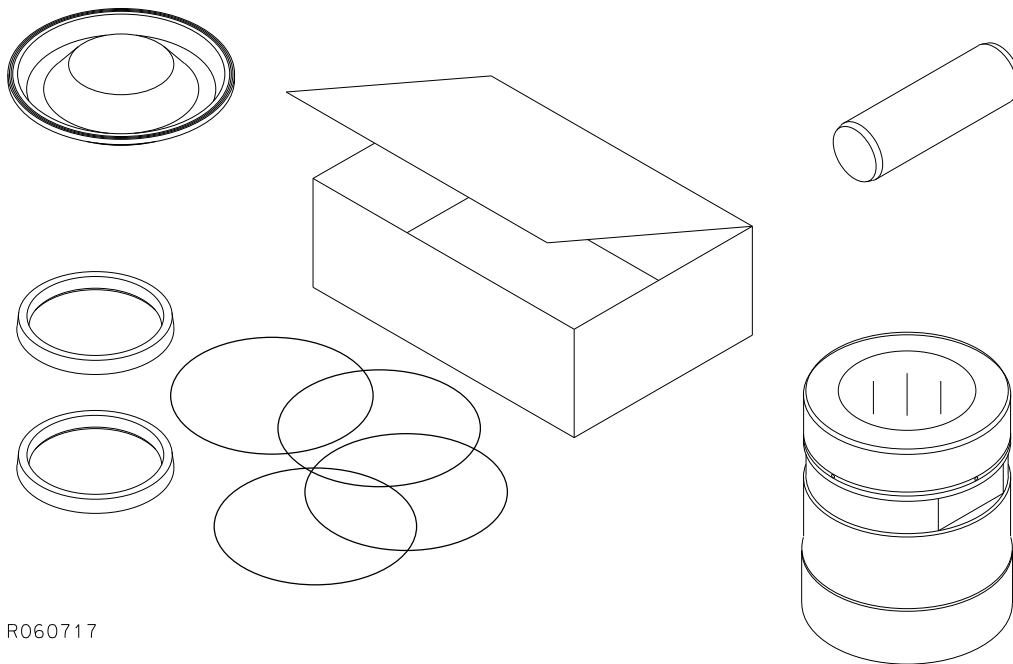


This summary only indicates the position of the seals. It must NOT be used as assembly instruction. Read the manual.

R060860

Item	Description	Part no.	Specification	Note	Qty
Kit	Seal set (incl. parts 1-11)	159838			1
1	O-ring	90019	D49		2
2	Seal	951966			2
3	Seal	157208			1
4	O-ring	952230	D63		1
5	O-ring	90083	D60		2
6	O-ring	90011	D14		4
7	O-ring	901199	D9		4
8	Seal	951369			2
9	Usit-ring	90056	8-13.9-1		1
10	Seal	157211			1
11	Rubber ring	157214			2

8. SERVICE KIT



R060717

Item	Description	Part no.	Specification	Note	Qty
Kit	Servicekit (incl. parts 1 - 4)	K1BH60			1
1	Membrane	113061			1
2	Tool retaining pin	159549			1
3	Lower tool bushing	159547			1
4	Seal set	159838			1



Sandvik Mining and Construction Oy, Breakers Lahti
Taivalkatu 8, P.O. Box 165, FI-15101 Lahti, Finland
Phone Int. +358 205 44 151, Telefax Int. +358 205 44 150
www.rammer.com