

Roto-Cut[®]

Allied's rotary asphalt cutter



The Roto-Cut® edge – cut costs, save time and reduce labor.

Allied's high-speed asphalt cutter – the Roto-Cut – slashes man hours off cutting jobs. Mounting easily with or without a Mounting Block, it uses the downpressure from the carrier to make clean cuts for digging which means better seals for the final patch. It delivers straight smooth cuts up to 5.5 inches deep at a rate of 6,000 feet per hour. The extra hard steel alloy rotary blade stays sharp to keep cutting longer even through high density asphaltic concrete. The Allied Roto-Cut provides an edge on the job site, no matter what the application:

- Removal of asphalt surfacing
- Trenching and patching jobs
- Edging
- Scoring and forming operations
- Utility line construction
- Other asphalt maintenance jobs

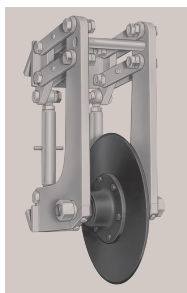
The Roto-Cut easily attaches to your motor grader, excavator, wheel loader, backhoe/loader and other construction machinery.



Model 1200

The one-piece yoke constructed frame installs on scarifier bar of all large motor graders and it fits wheel loader buckets using the optional 1800 LB Mounting Block.

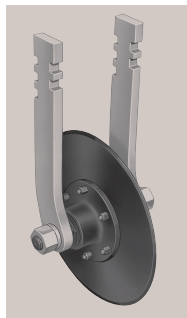
Depth of Cut: Up to 3.5 in. (9 cm)
Weight: 50 lbs. (23 kg)
Wheel Diameter: 12.0 in. (30.5 cm)



Model 1800M

The welded steel frame mounts on any standard motor grader moldboard 17 inches to 28 inches (43 cm to 71 cm) high. Tilting of the moldboard permits angle cutting.

Depth of Cut: Up to 5.5 in. (14 cm)
Weight: 265 lbs. (120 kg)
Wheel Diameter: 18.5 in. (47 cm)



Model 1800S/1800L*

The dual shank constructed frame mounts in the slots on scarifier block of motor graders and with the 1800LB Mounting Block adapts to wheel loaders and backhoe/loaders. Shanks adjust from 9.0 inches to 9.5 inches (22.9 cm to 24.1 cm) to fit various blocks.

*Model 1800L comes complete with the 1800LB Mounting Block. This model weighs 173 lbs. (79 kg)

Depth of Cut: Up to 5.5 in. (14 cm)
Weight: 100 lbs. (45 kg)
Wheel Diameter: 18.5 in. (47 cm)



Model 1200C and Model 1800C

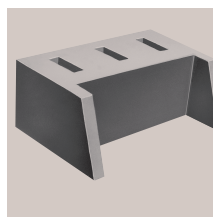
The welded steel frame installs on both loader buckets and backhoe buckets with a screw clamp device. The throat design fits many different wheel loader and backhoe/loader models.

Model 1200C

Depth of Cut: Up to 3.5 in. (9 cm)
Weight: 92 lbs. (42 kg)
Wheel Diameter: 12.0 in. (30.5 cm)

Model 1800C

Depth of Cut: Up to 5.5 in. (14 cm)
Weight: 263 lbs. (119 kg)
Wheel Diameter: 18.5 in. (47 cm)



Model 1800LB Mounting Block

Designed to use for wheel loader bucket installation with Model 1200 or Model 1800S. The Mounting Block is welded on the backside of the wheel loader bucket.

For sales and service, contact your Allied Distributor:



3900 Kelley Avenue, Cleveland, Ohio 44114
Tel: 216-431-2600 Fax: 216-431-2601
e-mail: Sales@AlliedCP.com
website: <http://www.AlliedCP.com>