

ENG 0/00

PARTS MANUAL

PMS83ENG.000

HYDRAULIC HAMMER

RAMMER S 83

SERIAL NO.

83BBA0005-UP

TABLE OF CONTENTS

1. Housing unit S 83	4
2. Accumulator S 83	6
3. Main valve S 83	7
4. Check valve S 83.	8
5. Pressure control valve S 83	9
6. Tie rods S 83.	10
7. Body parts S 83.	11
8. Front head S 83.	12
9. Lower tool bushing S 83	13
10. Seal set S 83	14

GENUINE RAMMER SPARE PARTS

Rammer genuine spare parts are designed and manufactured by using the latest technological knowledge and engineering skills. Rammer spare parts are made of the best available materials with the most advanced manufacturing techniques.

It is important that you use only genuine Rammer spare parts, to ensure easy operation, maintenance and repair of the product. Please note that eventual warranty claims will be handled only if you have used genuine Rammer parts in your Rammer.

LOCATION OF THE SERIAL NUMBER

It's important to make correct reference to the serial number of the product when ordering spare parts. Identification of serial number is the only proper means of maintaining and identifying parts for a specific product. The location of equipment serial number is pointed in "Operation and maintenance" manual.

SPARE PART ORDERS

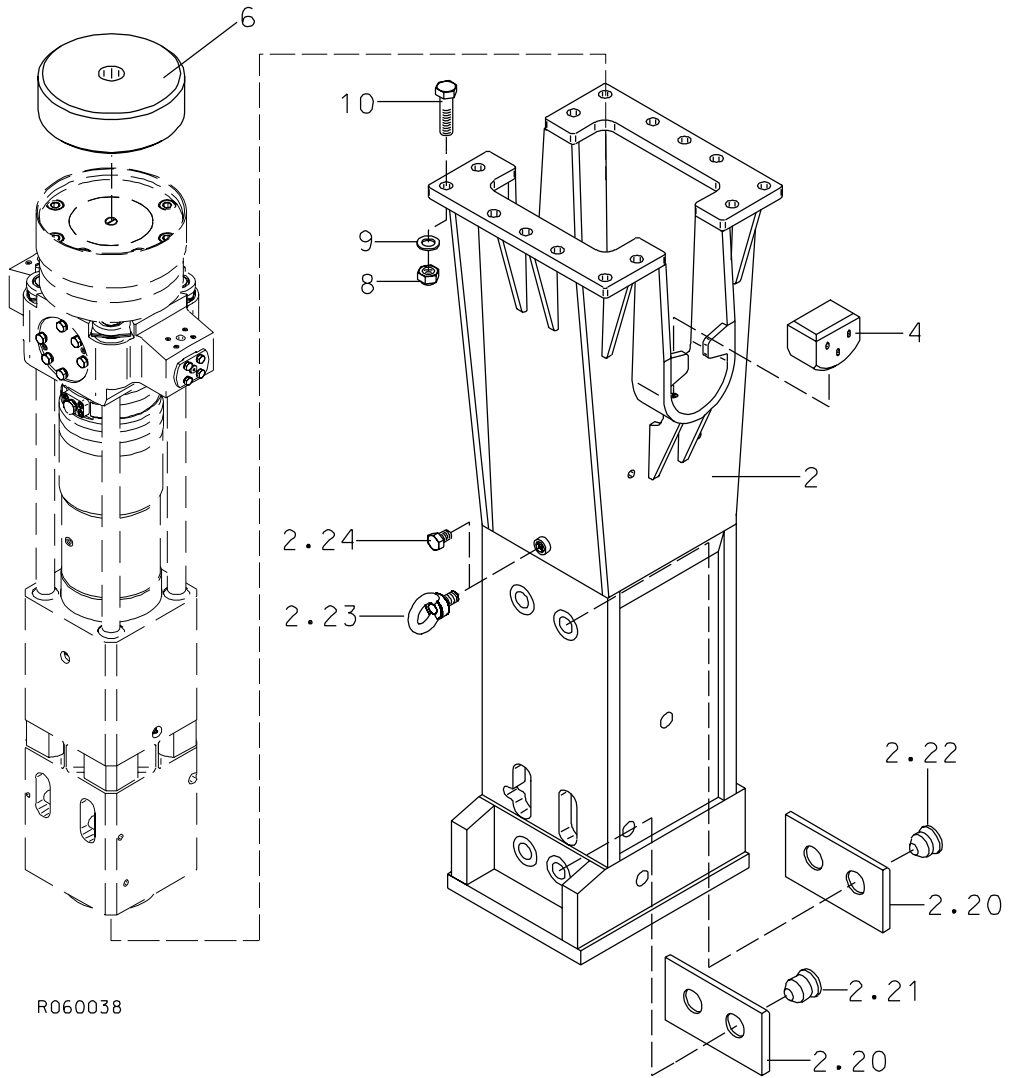
Quick spare part deliveries are secured by exact orders.

Required information:

- Name of customer and contact person
 - Order number (when available)
 - Delivery address
 - Mode of delivery (air mail etc.)
 - Required delivery date
 - Invoicing address
 - Model and serial number of the product
 - Name, number and required amount of spare parts
-

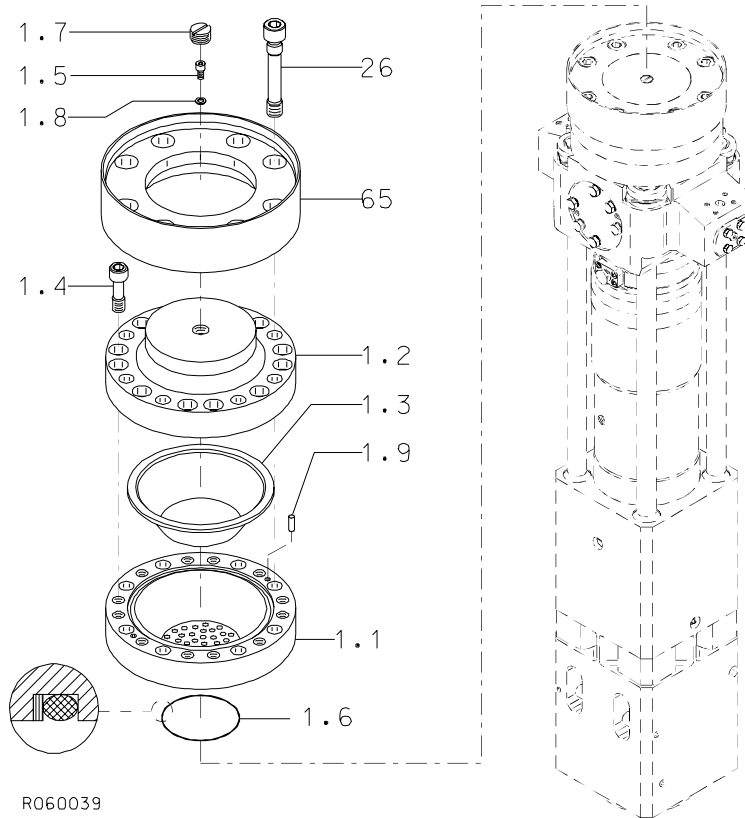
PARTS

1. HOUSING UNIT S 83



Item	Description	Part no.	Specification	Note	Qty
2	Housing (incl. parts 2.20-2.24)	103194			1
2.20	Wear plate	300208			4
2.21	Pin	103698			4
2.22	Pin	103699			4
2.23	Lifting eye	90705	M30 DIN 580		1
2.24	Hex. screw	900026	M30x40-8.8 DIN 933		1
4	Pad	300978			2
6	Buffer	300979			1
8	Lock nut	90507	M24-12 DIN 985		14
9	Washer	90511	25 DIN 6916		14
10	Hex. screw	90589	M24x110-12.9 DIN 931		14
Kit	Label set	200292			1

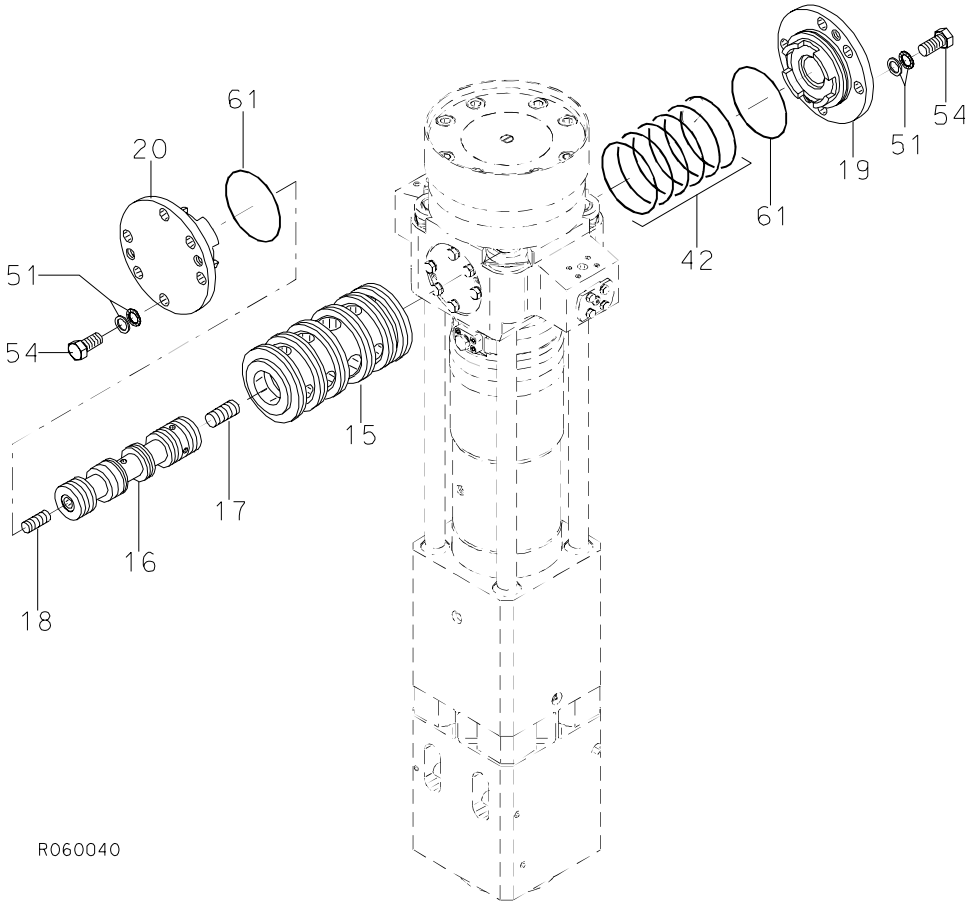
2. ACCUMULATOR S 83



R060039

Item	Description	Part no.	Specification	Note	Qty
1	Accumulator (incl. parts 1.1-1.9)	30771			1
1.1	Accumulator bottom	10547			1
1.2	Accumulator cover	10546			1
1.3	Membrane	30766			1
1.4	Accumulator screw	40416			12
1.5	Filling plug	40368			1
1.6	Seal	41357	D124	*	1
1.7	Shield plug	41356			1
1.8	Usit-ring	90056	U8.7-14-1	*	1
1.9	Parallel pin	90304	10m6x24 DIN 6325		2
26	Accumulator screw	41335			8
65	Spacer plate	101070			1
	*) Are included in seal set				

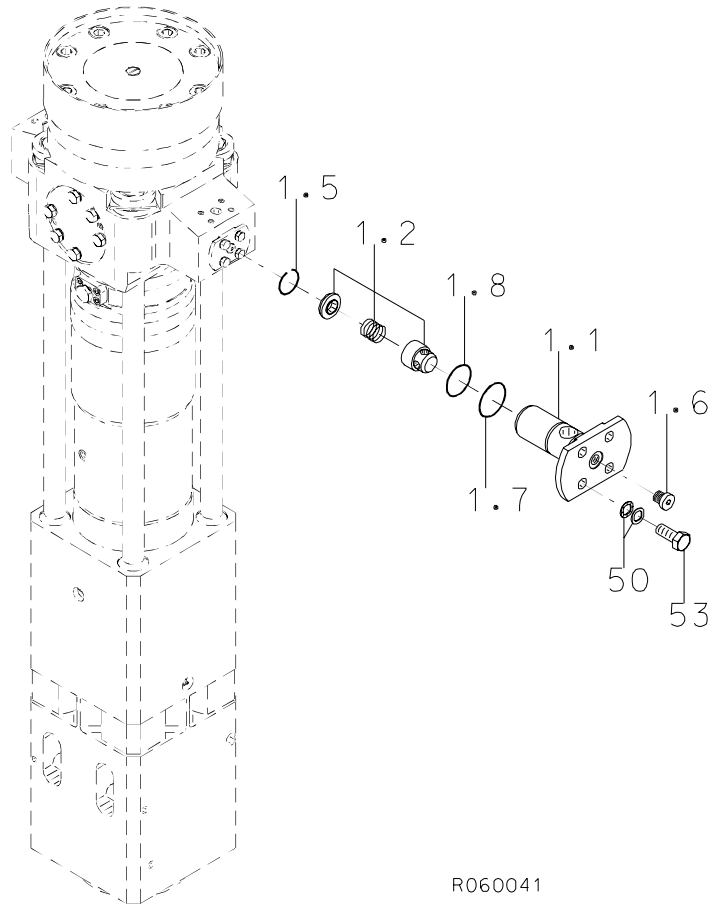
3. MAIN VALVE S 83



R060040

Item	Description	Part no.	Specification	Note	Qty
15	Main valve bushing	200246			1
16	Main spool	300418			1
17	Spool	40111			1
18	Spool	40112			1
19	Cover	30777			1
20	Cover	30776			1
42	Seal	90020	D105	*	6
51	Lock washer	90597	M16 NORD-LOCK		12
54	Hex. screw	90514	M16x30-8.8 DIN 933		12
61	O-ring	90005	D105	*	2
	*) Are included in seal set				

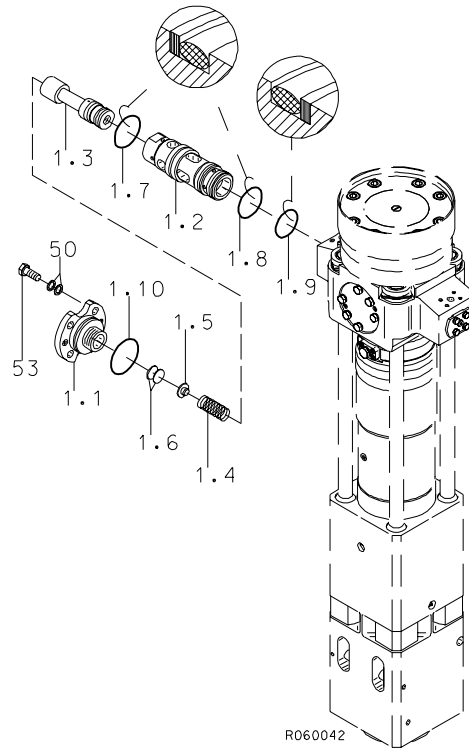
4. CHECK VALVE S 83



R060041

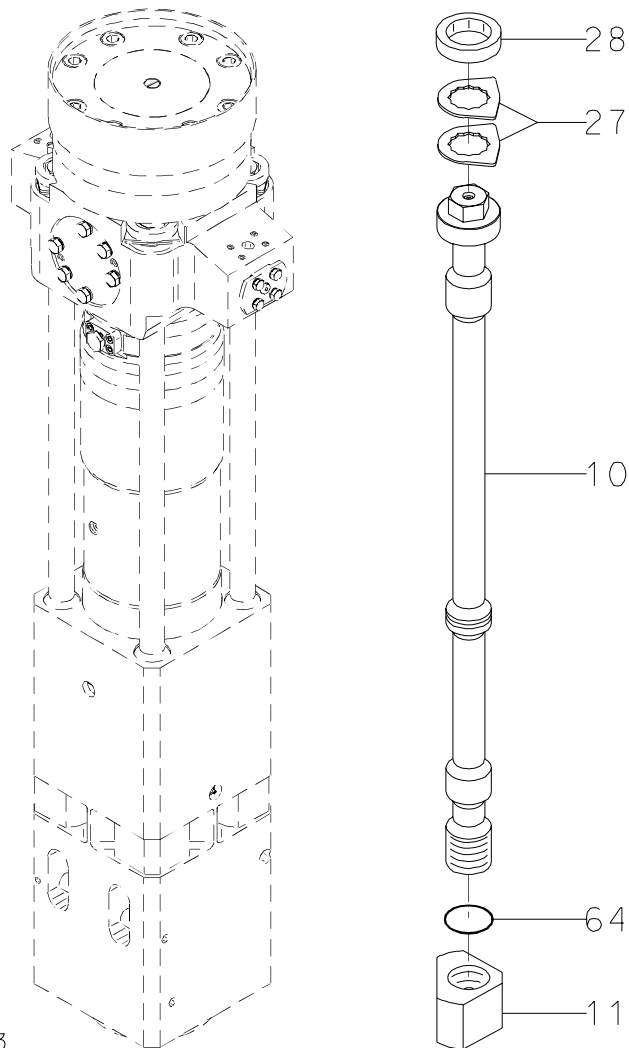
Item	Description	Part no.	Specification	Note	Qty
1	Check valve (incl. parts 1.1-1.8)	300420			1
1.1	Check valve housing	300417			1
1.2	Check valve	90532			1
1.5	Spring ring	90302	B30 DIN 7993		1
1.6	Flange plug	90403	R1/4		1
1.7	O-ring	90017	D34	*	1
1.8	O-ring	90004	D32	*	1
50	Lock washer	91012	M12 NORD-LOCK		4
53	Hex. screw	90513	M12x30-8.8 DIN 933		4
	*) Are included in seal set				

5. PRESSURE CONTROL VALVE S 83



Item	Description	Part no.	Specification	Note	Qty
1	Pressure control valve (incl. parts 1.1-1.10)	300421			1
1.1	Cover	300416			1
1.2	Valve housing	300419			1
1.3	Spool	30792			1
1.4	Spring	90104			1
1.5	Spring guide	40275			1
1.6	Shim plate	42364	S=1.5		x
1.6	Shim plate	42365	S=1.25		x
1.6	Shim plate	42366	S=0.9		x
1.7	Seal	41374	D55	*	1
1.8	Seal	41375	D50	*	1
1.9	Seal	41376	D45	*	1
1.10	O-ring	90083	D60	*	1
50	Lock washer	91012	M12 NORD-LOCK		4
53	Hex. screw	90513	M12x30-8.8 DIN 933		4
	*) Are included in seal set				

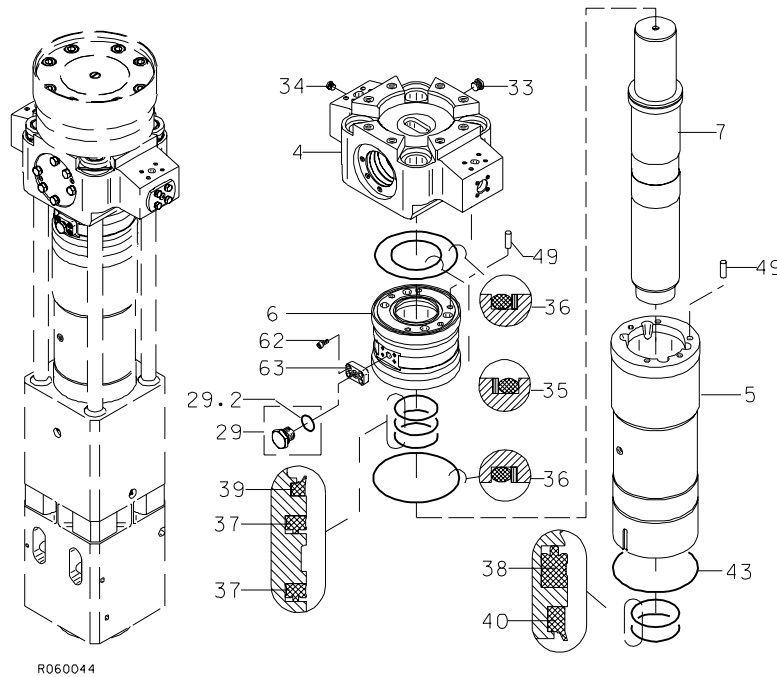
6. TIE RODS S 83



R060043

Item	Description	Part no.	Specification	Note	Qty
10	Tie rod	200177			4
11	Tie rod nut	300291			4
27	Lock plate	41090			8
28	Rubber ring	40586			4
64	O-ring	901025	D54	*	4
	*) Are included in seal set				

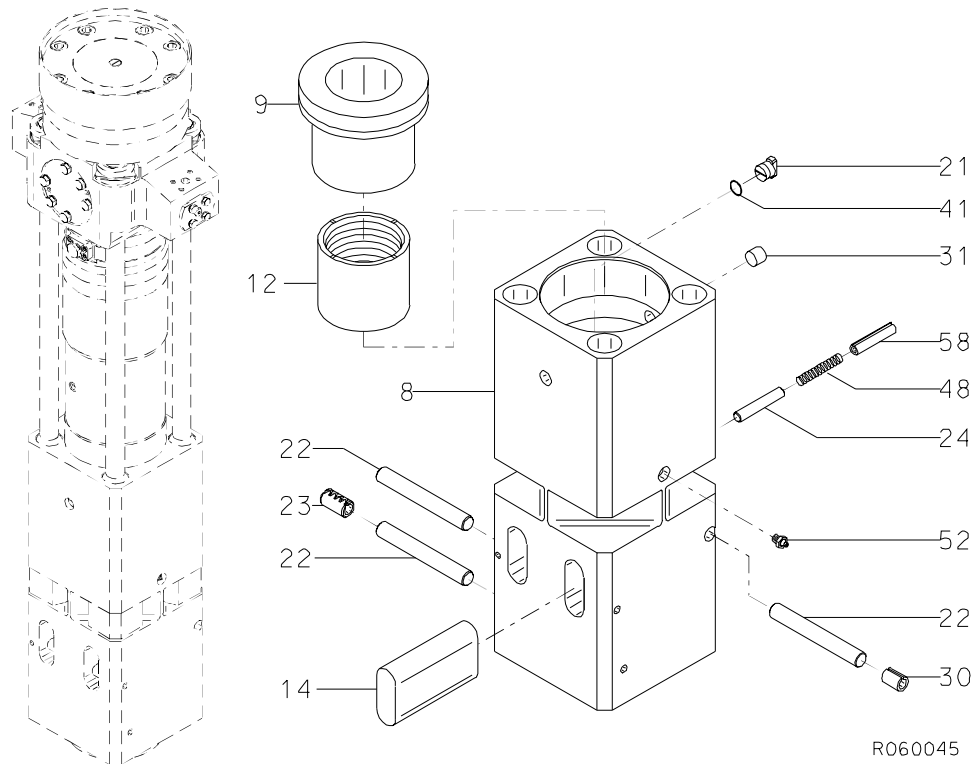
7. BODY PARTS S 83



R060044

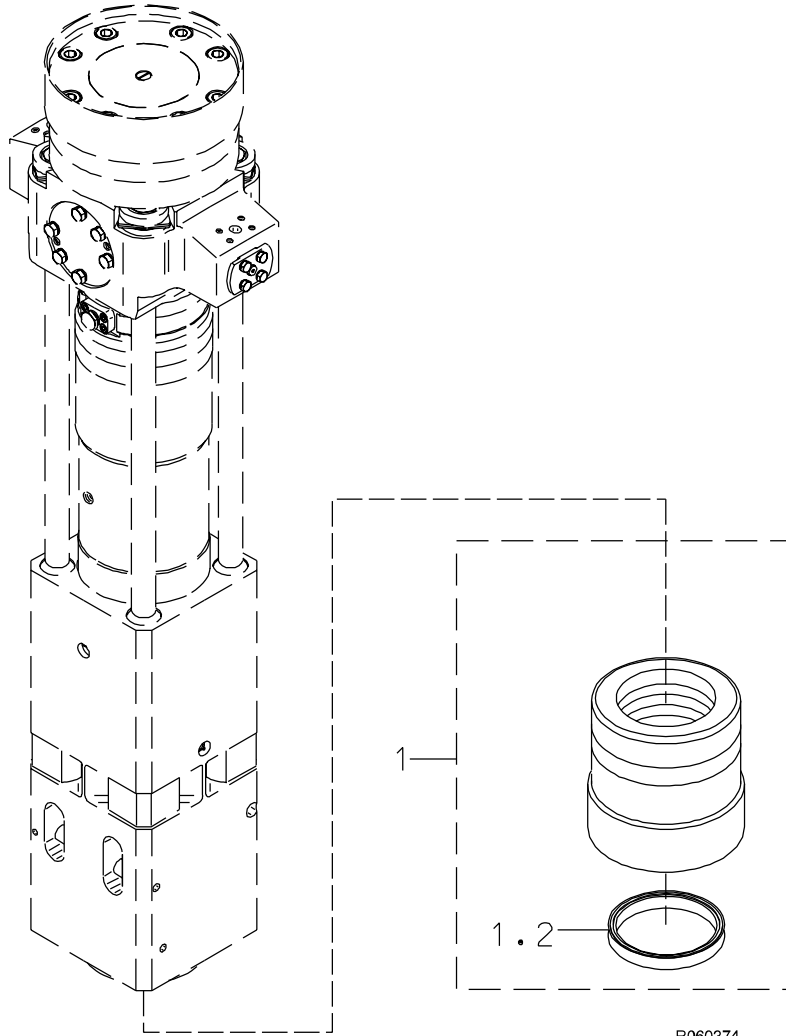
Item	Description	Part no.	Specification	Note	Qty
4	Valve body	100286			1
5	Cylinder	100288			1
6	Seal carrier	11214			1
7	Piston	10606			1
29	Breather (incl. part 29.2)	101700			1
29.2	O-ring	901173	D27	*	1
33	Flange plug	90401	R3/4		1
34	Flange plug	90444	R3/8		1
35	Seal	41350	D130	*	1
36	Seal	41352	D220	*	2
37	Seal	911021	D117	*	2
38	Seal	911001	D135	*	1
39	Wiper	41354	D117	*	1
40	Wiper	913001	D135	*	1
43	O-ring	90076	D229	*	1
49	Parallel pin	90317	16m6x50 DIN 6325		2
62	Hex. socket screw	90555	M10x25-8.8 DIN 912		4
63	Flange	400485			1
	*) Are included in seal set				

8. FRONT HEAD S 83



Item	Description	Part no.	Specification	Note	Qty
8	Front head	100336			1
9	Thrust ring	20838			1
12	Upper tool bushing	300292			1
14	Tool retaining pin	400358			2
21	Wedge	40110			1
22	Retaining pin	400360	D30		3
23	Split pin	901132	D30x60		1
24	Retaining pin	400361	D20		1
30	Split pin	904006	30x40 DIN 1481		1
31	Plug	40116			1
41	O-ring	90000	D24	*	1
48	Spring	920007			1
52	Grease nipple	90200	R1/4		1
58	Split pin	904007	21x100 DIN 1481		1
	*) Are included in seal set				

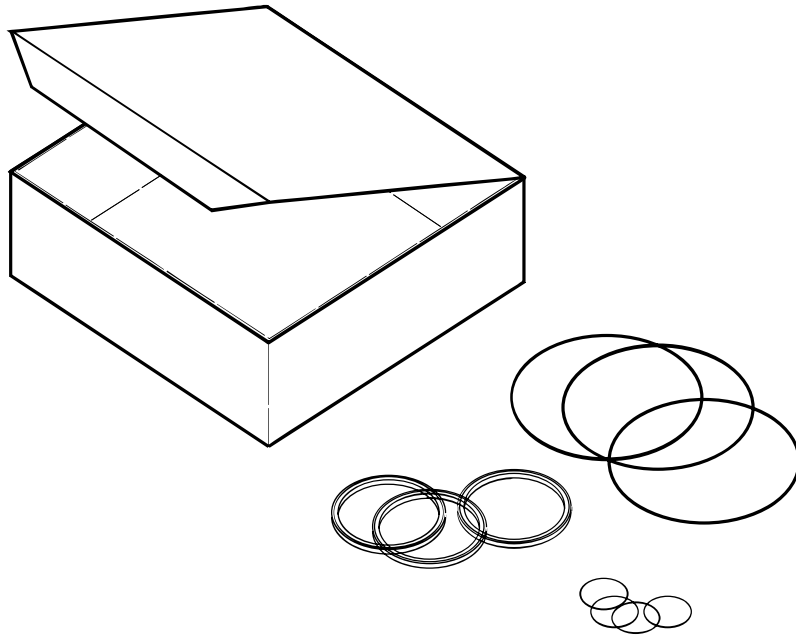
9. LOWER TOOL BUSHING S 83



R060374

Item	Description	Part no.	Specification	Note	Qty
1	Lower tool bushing (incl. part 1.2)	102157			1
1.2	Seal	102013			1

10. SEAL SET S 83



R060012

Item	Description	Part no.	Specification	Note	Qty
Kit	Seal set (incl. parts 1-23)	42415			1
1	O-ring	901173			1
2	Seal	41350	D130		1
3	Seal	41352	D220		2
4	Seal	911021	D117		2
5	Seal	911001	D135		1
6	Wiper	41354	D117		1
7	Wiper	913001	D135		1
8	O-ring	90000	D24		1
9	Seal	90020	D105		6
10	O-ring	90076	D229		1
11	O-ring	90010	D33		1
12	O-ring	90009	D38		1
13	O-ring	90005	D105		2
14	O-ring	901025	D54		4
15	Seal	41357	D124		1
16	Usit-ring	90056	U8.7-14-1		1
17	Seal	41374	D55		1
18	Seal	41375	D50		1
19	Seal	41376	D45		1
20	O-ring	90083	D60		1
21	O-ring	90017	D34		1
22	O-ring	90004	D32		1
23	O-ring	90008	D25		1

SANDVIK TAMROCK CORP.
Breakers Lahti
Taivalkatu 8, P.O. Box 165, FIN-15101 Lahti, Finland
Phone Int. +358 205 44 161, Telefax Int. +358 205 44 160,
Internet <http://www.rammer.com>

27-40-14000-24-104-406
27-40-14000-30-176-322