

PARTS MANUAL

PMS86ENG.002

HYDRAULIC HAMMER

RAMMER S 86

RAMMER S 86 W

Serial No.

86A04XXX-UP

86A04XXX/A01-UP

86W05XXX/W02-UP

86AXA0005-UP

86AAA0015-UP

TABLE OF CONTENTS

| | |
|--------------------------------------|----|
| 1. Housing unit S 86 | 4 |
| 2. Accumulator S 86 | 6 |
| 3. Main valve S 86 | 7 |
| 4. Check valve S 86 | 8 |
| 5. Pressure control valve S 86 | 10 |
| 6. Tie rods S 86 | 12 |
| 7. Body parts S 86 | 14 |
| 8. Front head S 86 | 16 |
| 9. Lower tool bushing S 86 | 18 |
| 10. Seal set S 86 | 19 |
| 11. S 86 W-model parts | 20 |

GENUINE RAMMER SPARE PARTS

Rammer genuine spare parts are designed and manufactured by using the latest technological knowledge and engineering skills. Rammer spare parts are made of the best available materials with the most advanced manufacturing techniques.

It is important that you use only genuine Rammer spare parts, to ensure easy operation, maintenance and repair of the product. Please note that eventual warranty claims will be handled only if you have used genuine Rammer parts in your Rammer.

LOCATION OF THE SERIAL NUMBER

It's important to make correct reference to the serial number of the product when ordering spare parts. Identification of serial number is the only proper means of maintaining and identifying parts for a specific product. The location of equipment serial number is pointed in "Operation and maintenance" manual.

SPARE PART ORDERS

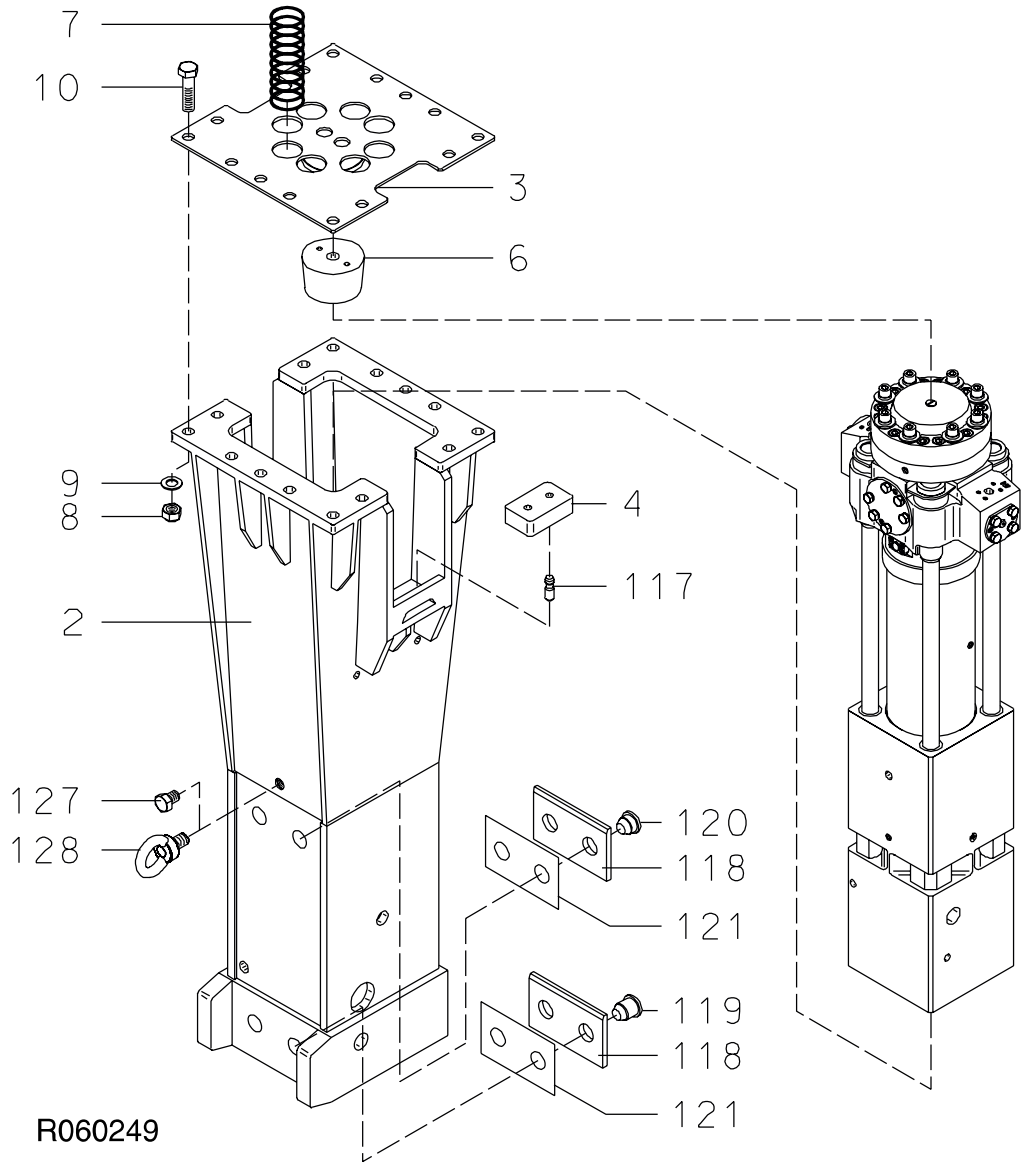
Quick spare part deliveries are secured by exact orders.

Required information:

- Name of customer and contact person
 - Order number (when available)
 - Delivery address
 - Mode of delivery (air mail etc.)
 - Required delivery date
 - Invoicing address
 - Model and serial number of the product
 - Name, number and required amount of spare parts
-

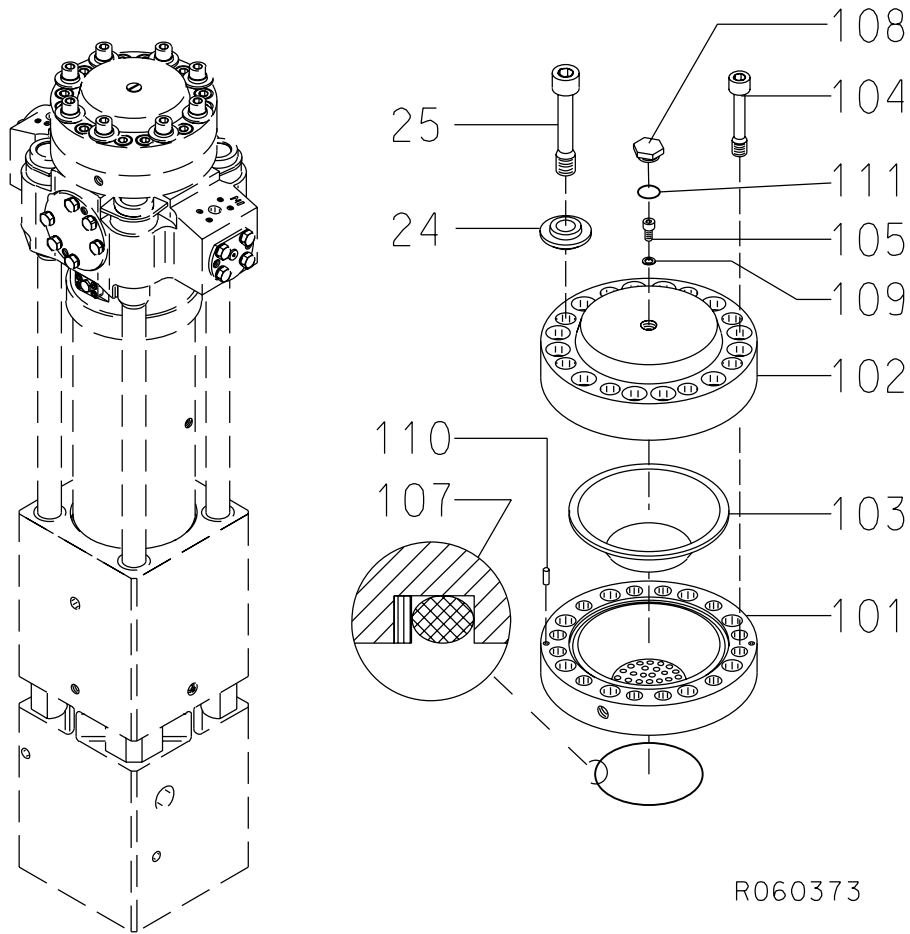
PARTS

1. HOUSING UNIT S 86



| Item | Description | Part no. | Specification | Note | Qty |
|------|-------------------------------|----------|---------------------|------|-----|
| 2 | Housing (incl. parts 118-128) | 10237 | | | 1 |
| 3 | Spacer plate | 30273 | | | 1 |
| 4 | Pad | 40542 | | | 2 |
| 6 | Buffer | 30274 | | | 1 |
| 7 | Spring | 40540 | | | 8 |
| 8 | Lock nut | 90519 | M36-8 DIN 985 | | 14 |
| 9 | Washer | 90521 | 39 DIN 126 | | 14 |
| 10 | Hex. screw | 90520 | M36x140-8.8 DIN 931 | | 14 |
| 117 | Pin | 40131 | | | 4 |
| 118 | Wear plate | 40531 | | | 4 |
| 119 | Pin | 40539 | | | 4 |
| 120 | Pin | 40538 | | | 4 |
| 121 | Shim plate | 41148 | | | 4 |
| 127 | Hex. screw | 901465 | M36x40-8.8 DIN 933 | | 1 |
| 128 | Lifting eye | 901464 | M36 DIN 580 | | 1 |
| | | | | | |
| Kit | Label set | 200232 | | | 1 |

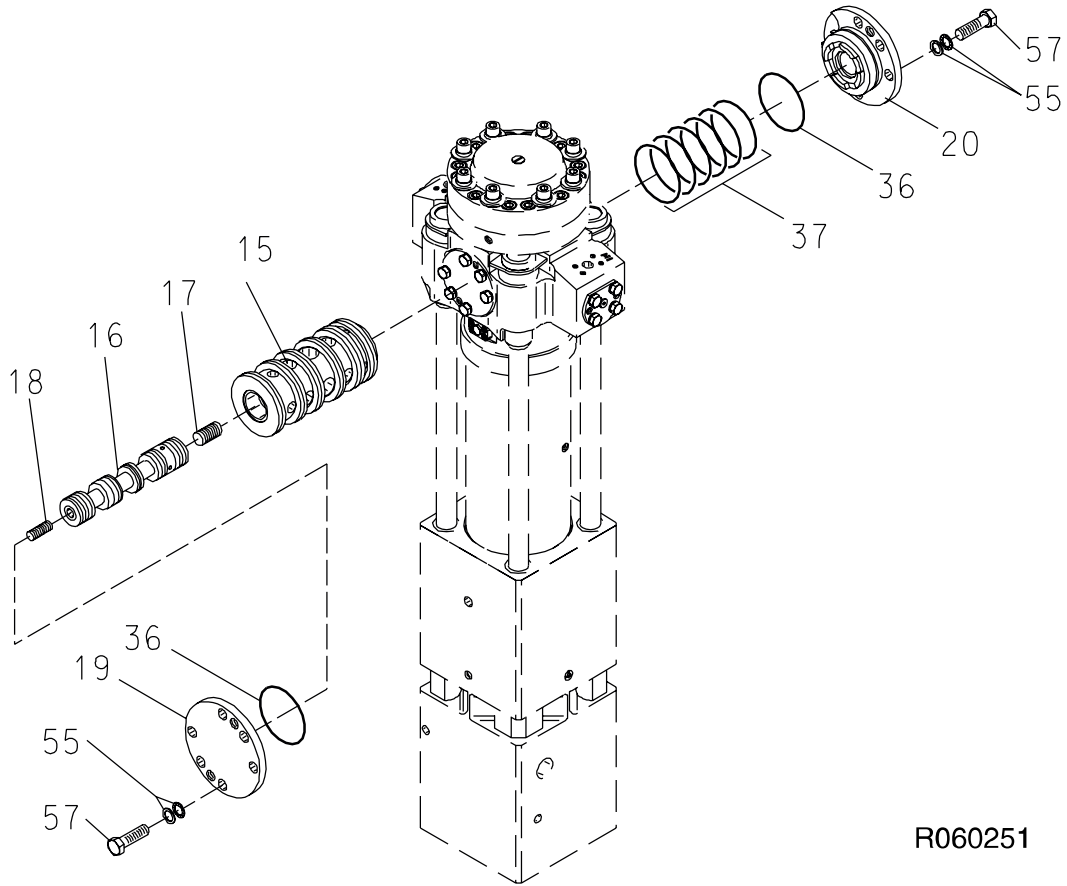
2. ACCUMULATOR S 86



R060373

| Item | Description | Part no. | Specification | Note | Qty |
|------|-----------------------------------|----------|---------------|------|-----|
| 1 | Accumulator (incl. parts 101-111) | 30270 | | | 1 |
| 101 | Accumulator bottom | 10230 | | | 1 |
| 102 | Accumulator cover | 10231 | | | 1 |
| 103 | Membrane | 30269 | | | 1 |
| 104 | Screw | 40528 | | | 12 |
| 105 | Screw | 40368 | | | 1 |
| 107 | Seal | 40536 | D144 | * | 1 |
| 108 | Plug | 400300 | | | 1 |
| 109 | Usit-ring | 90056 | U 8.7-14-1 | * | 1 |
| 110 | Guide pin | 90304 | D10 | | 2 |
| 111 | O-ring | 910006 | D23 | * | 1 |
| 24 | Washer | 42078 | | | 8 |
| 25 | Accumulator screw | 30261 | | | 8 |
| | *) Are included in seal set | | | | |

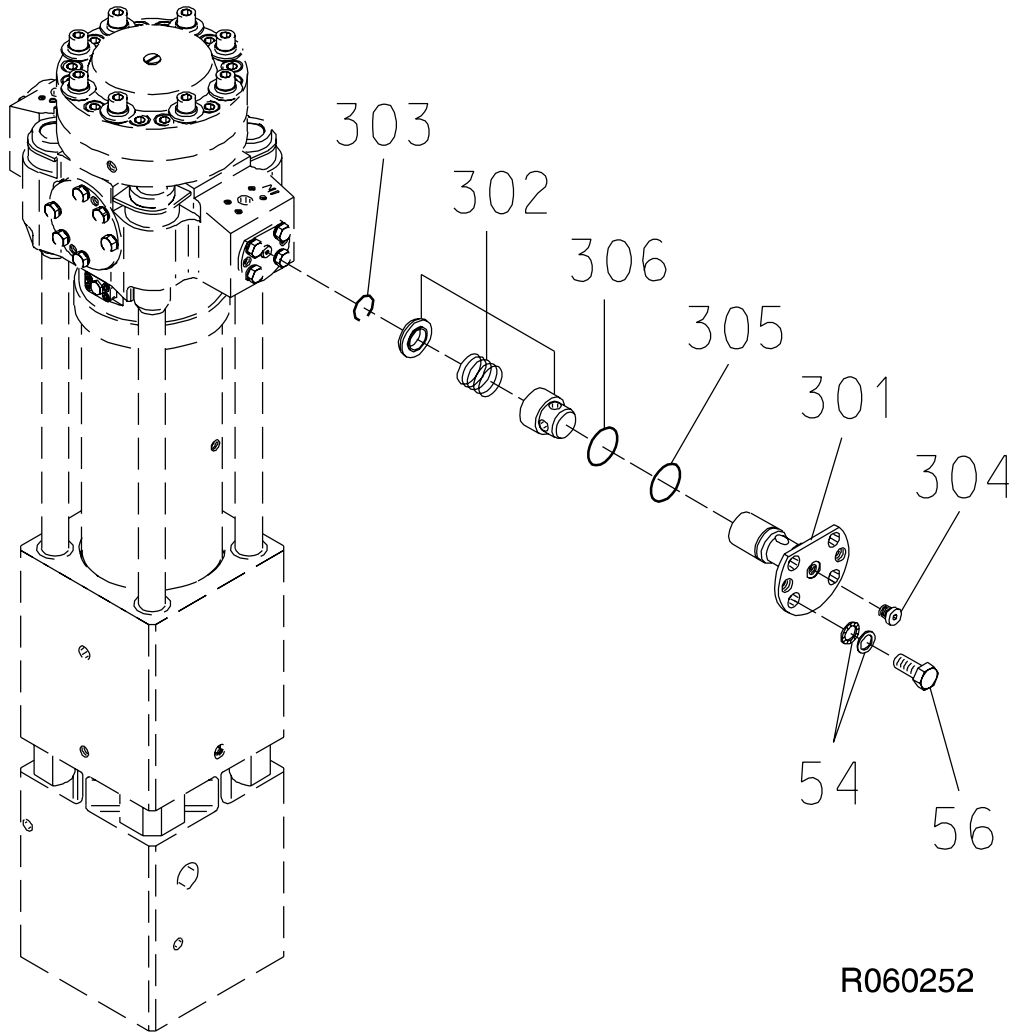
3. MAIN VALVE S 86



R060251

| Item | Description | Part no. | Specification | Note | Qty |
|------|-----------------------------|----------|-------------------------|------|-----|
| 15 | Bushing | 20183 | | | 1 |
| 16 | Spool | 30267 | | | 1 |
| 17 | Spool | 40524 | | | 1 |
| 18 | Spool | 40523 | | | 1 |
| 19 | Cover | 30260 | | | 1 |
| 20 | Cover | 30295 | | | 1 |
| 36 | O-ring | 90032 | D119 | * | 2 |
| 37 | O-ring | 90033 | D124 | * | 6 |
| 55 | Locking washer | 91010 | M20 NORD-LOCK | | 12 |
| 57 | Hex. screw | 90518 | M20x1.5x45-10.9 DIN 961 | | 12 |
| | *) Are included in seal set | | | | |

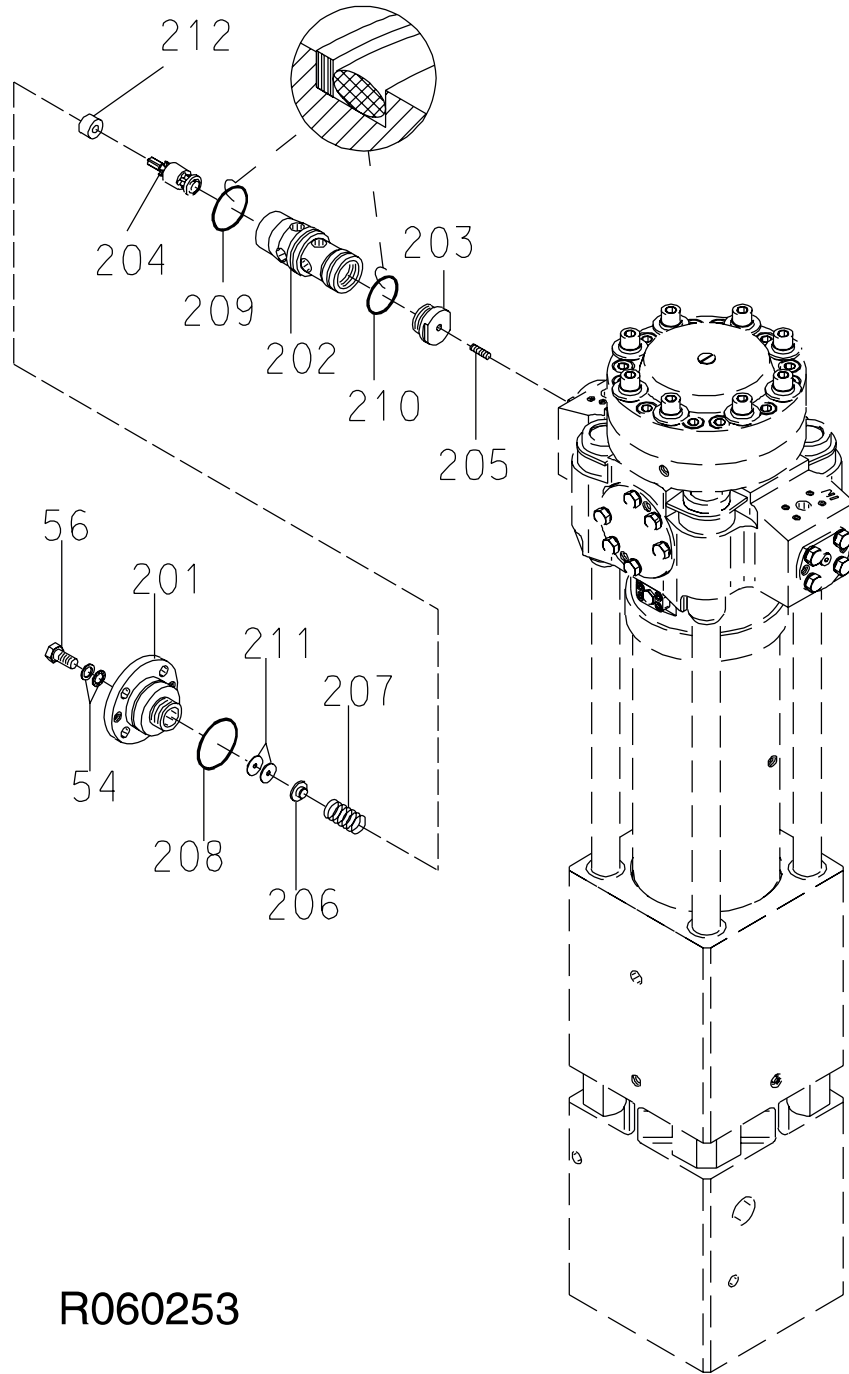
4. CHECK VALVE S 86



R060252

| Item | Description | Part no. | Specification | Note | Qty |
|-------------|--|-----------------|----------------------|-------------|------------|
| 3 | Check valve (incl. parts 301-306, 54 and 56) | 40587 | | | 1 |
| 301 | Check valve housing | 30272 | | | 1 |
| 302 | Check valve assembly | 90432 | | | 1 |
| 303 | Locking ring | 90310 | B38 DIN 7993 | | 1 |
| 304 | Plug | 90403 | R1/4 | | 1 |
| 305 | O-ring | 90031 | D46 | * | 1 |
| 306 | O-ring | 90007 | D44 | * | 1 |
| 54 | Locking washer | 90597 | M16 NORD-LOCK | | 4 |
| 56 | Hex. screw | 90517 | M16x35-8.8 DIN 933 | | 4 |
| | | | | | |
| | *) Are included in seal set | | | | |

5. PRESSURE CONTROL VALVE S 86

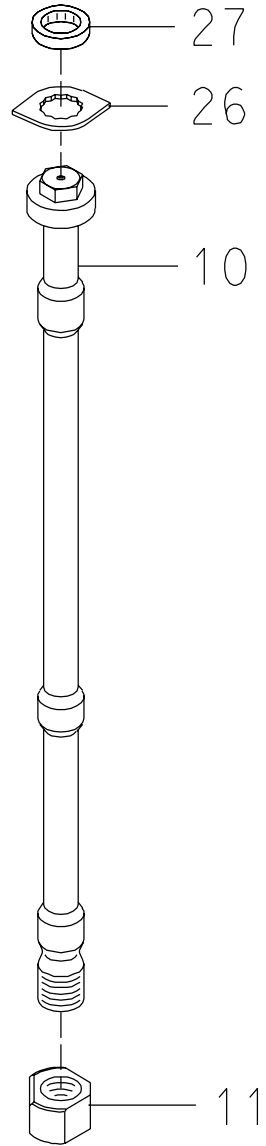
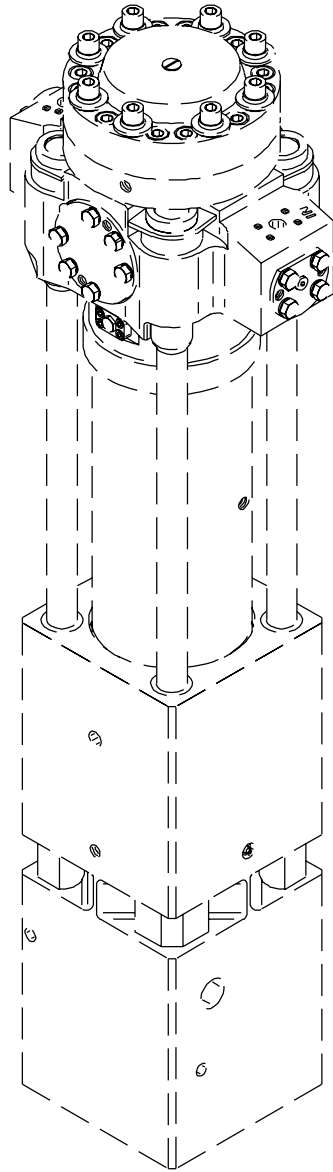


R060253

PRESSURE CONTROL VALVE S 86

| Item | Description | Part no. | Specification | Note | Qty |
|-------------|--|-----------------|----------------------|-------------|------------|
| 2 | Pressure control valve (incl. parts 201-212) | 31820 | | | 1 |
| 201 | Cover | 30266 | | | 1 |
| 202 | Guide | 30268 | | | 1 |
| 203 | Guide | 40527 | | | 1 |
| 204 | Spool | 31430 | | | 1 |
| 205 | Spool | 40522 | | | 1 |
| 206 | Spring guide | 40525 | | | 1 |
| 207 | Spring | 90118 | D32x115 | | 1 |
| 208 | O-ring | 90030 | D74 | * | 1 |
| 209 | Seal | 40533 | D64 | * | 1 |
| 210 | Seal | 40534 | D54 | * | 1 |
| 211 | Shim plate | 42363 | S=0.9 mm | | x |
| 211 | Shim plate | 42362 | S=1.25 mm | | x |
| 211 | Shim plate | 42361 | S=1.5 mm | | x |
| 212 | Spring support | 42099 | | | 1 |
| 54 | Locking washer | 90597 | M16 NORD-LOCK | | 4 |
| 56 | Hex. screw | 90517 | M16x35-8.8 DIN 933 | | 4 |
| | | | | | |
| | *) Are included in seal set | | | | |

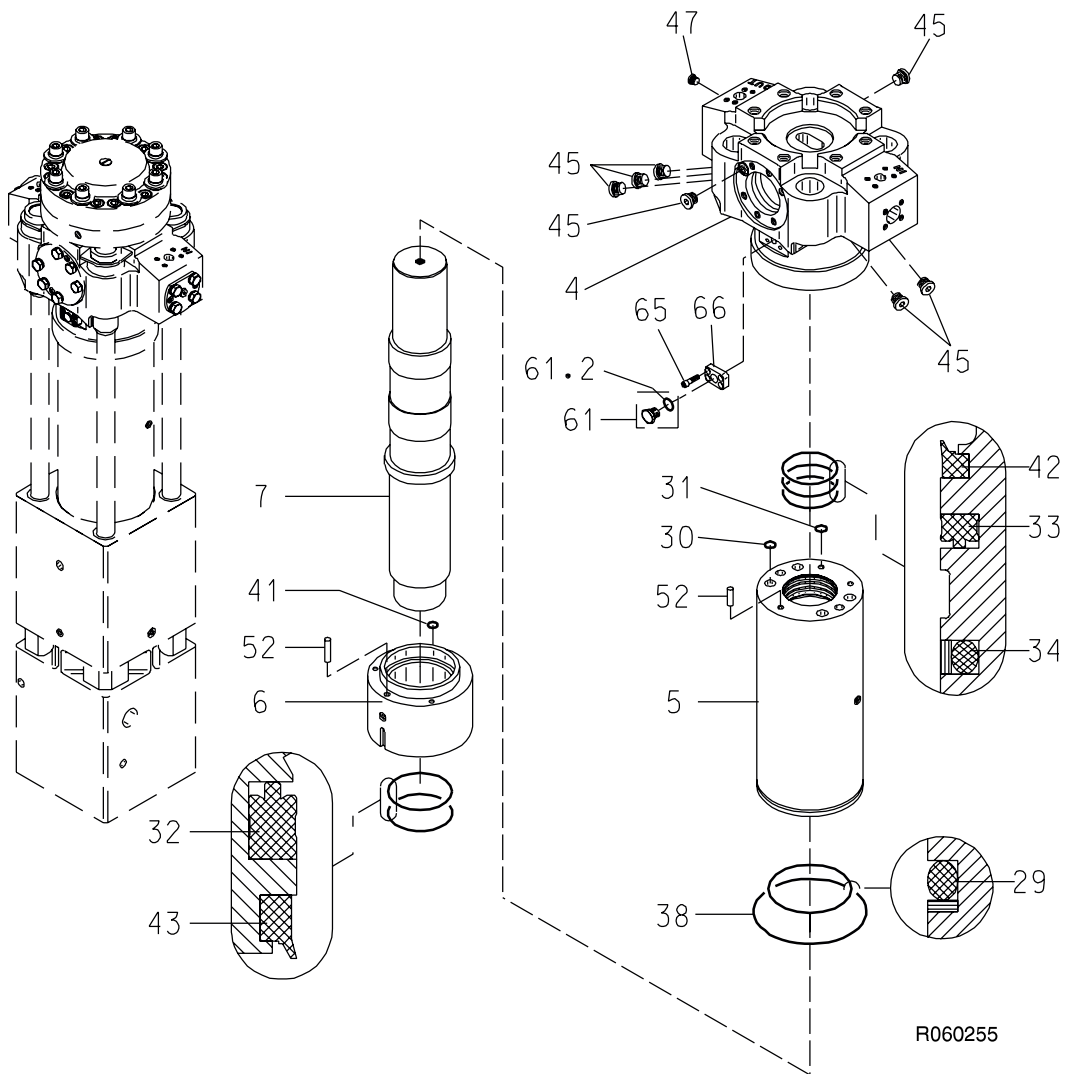
6. TIE RODS S 86



R060254

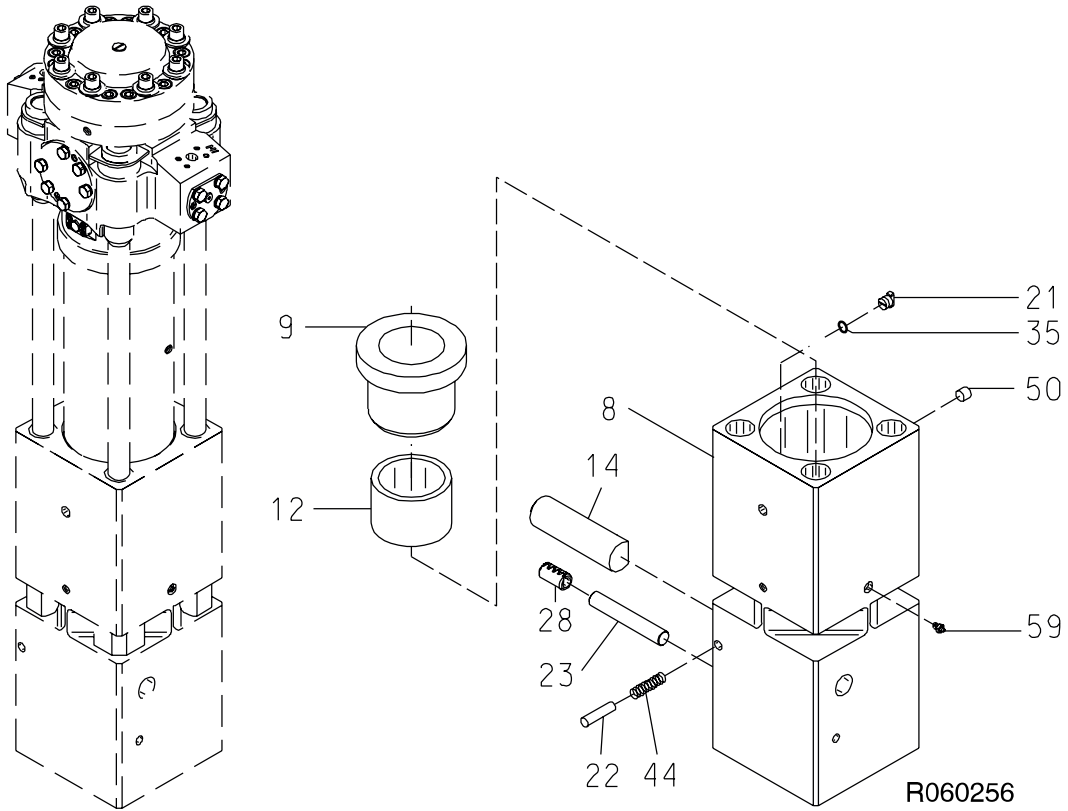
| Item | Description | Part no. | Specification | Note | Qty |
|-------------|--------------------|-----------------|----------------------|-------------|------------|
| 10 | Side rod | 20282 | | | 4 |
| 11 | Nut | 30480 | | | 4 |
| 26 | Locking ring | 40585 | | | 4 |
| 27 | Rubber ring | 40586 | | | 4 |

7. BODY PARTS S 86



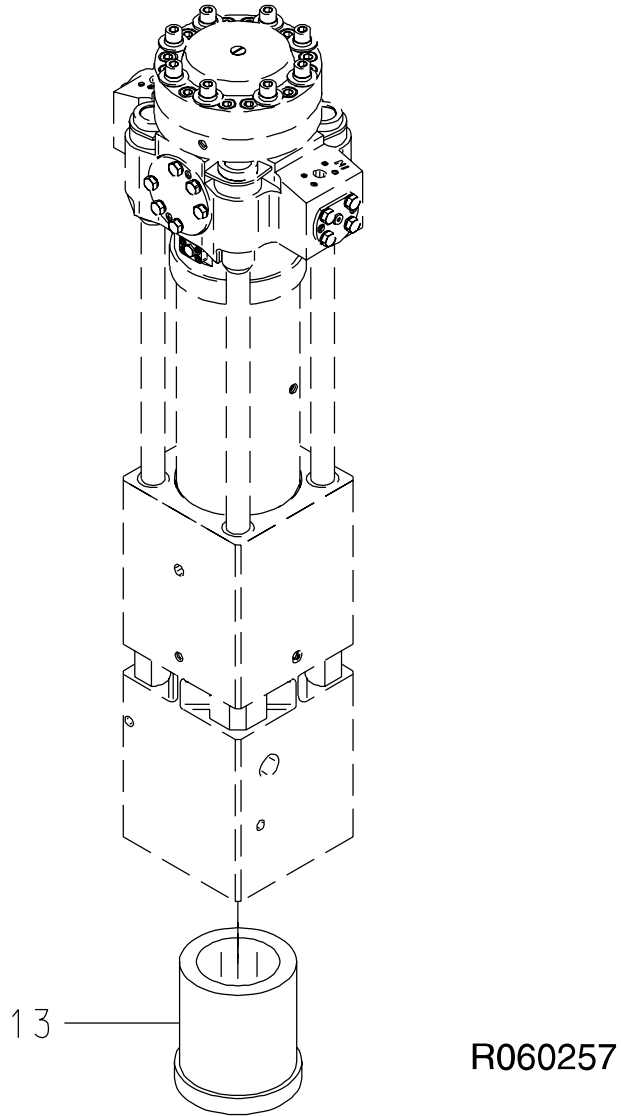
| Item | Description | Part no. | Specification | Note | Qty |
|-------------|-----------------------------|-----------------|----------------------|-------------|------------|
| 4 | Valve housing | 10549 | | | 1 |
| 5 | Cylinder | 10223 | | | 1 |
| 6 | Seal carrier | 100172 | | | 1 |
| 7 | Piston | 10225 | | | 1 |
| 29 | Seal | 40588 | D209 | * | 1 |
| 30 | Seal | 40589 | D37 | * | 6 |
| 31 | Seal | 40388 | D26 | * | 2 |
| 32 | Seal | 911002 | D160 | * | 1 |
| 33 | Seal | 90063 | D142 | * | 1 |
| 34 | Seal | 40590 | D140 | * | 1 |
| 38 | O-ring | 90034 | D259 | * | 1 |
| 41 | O-ring | 90012 | D19 | * | 1 |
| 42 | Wiper | 90064 | D142 | * | 1 |
| 43 | Wiper | 913000 | D160 | * | 1 |
| 45 | Plug | 90410 | R1 | | 7 |
| 47 | Plug | 90424 | R1/2 | | 1 |
| 52 | Guide pin | 90300 | D16 | | 2 |
| 61 | Breather (incl. part 61.2) | 101700 | | | 1 |
| 61.2 | O-ring | 901173 | | * | 1 |
| 65 | Hex. socket screw | 90555 | M10x25-8.8 DIN 912 | | 4 |
| 66 | Flange | 400485 | | | 1 |
| | *) Are included in seal set | | | | |

8. FRONT HEAD S 86



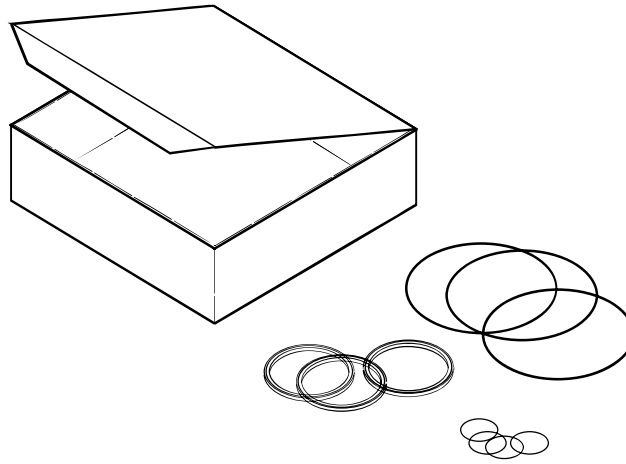
| Item | Description | Part no. | Specification | Note | Qty |
|-------------|-----------------------------|-----------------|----------------------|-------------|------------|
| 8 | Front head | 10217 | | | 1 |
| 9 | Thrust ring | 30254 | | | 1 |
| 12 | Upper tool bushing | 40502 | | | 1 |
| 14 | Pin | 41064 | | | 1 |
| 21 | Wedge | 40110 | | | 1 |
| 22 | Pin | 40570 | | | 1 |
| 23 | Pin | 40503 | | | 1 |
| 28 | Split pin | 901134 | D40x70 | | 1 |
| 35 | O-ring | 90000 | D24 | * | 1 |
| 44 | Spring | 90109 | D25x89 | | 1 |
| 50 | Plug | 40116 | | | 1 |
| 59 | Grease nipple | 90200 | AR 1/4 DIN 71412 | | 1 |
| | | | | | |
| | *) Are included in seal set | | | | |

9. LOWER TOOL BUSHING S 86



| Item | Description | Part no. | Specification | Note | Qty |
|-------------|--------------------|-----------------|----------------------|-------------|------------|
| 13 | Lower tool bushing | 21155 | | | 1 |

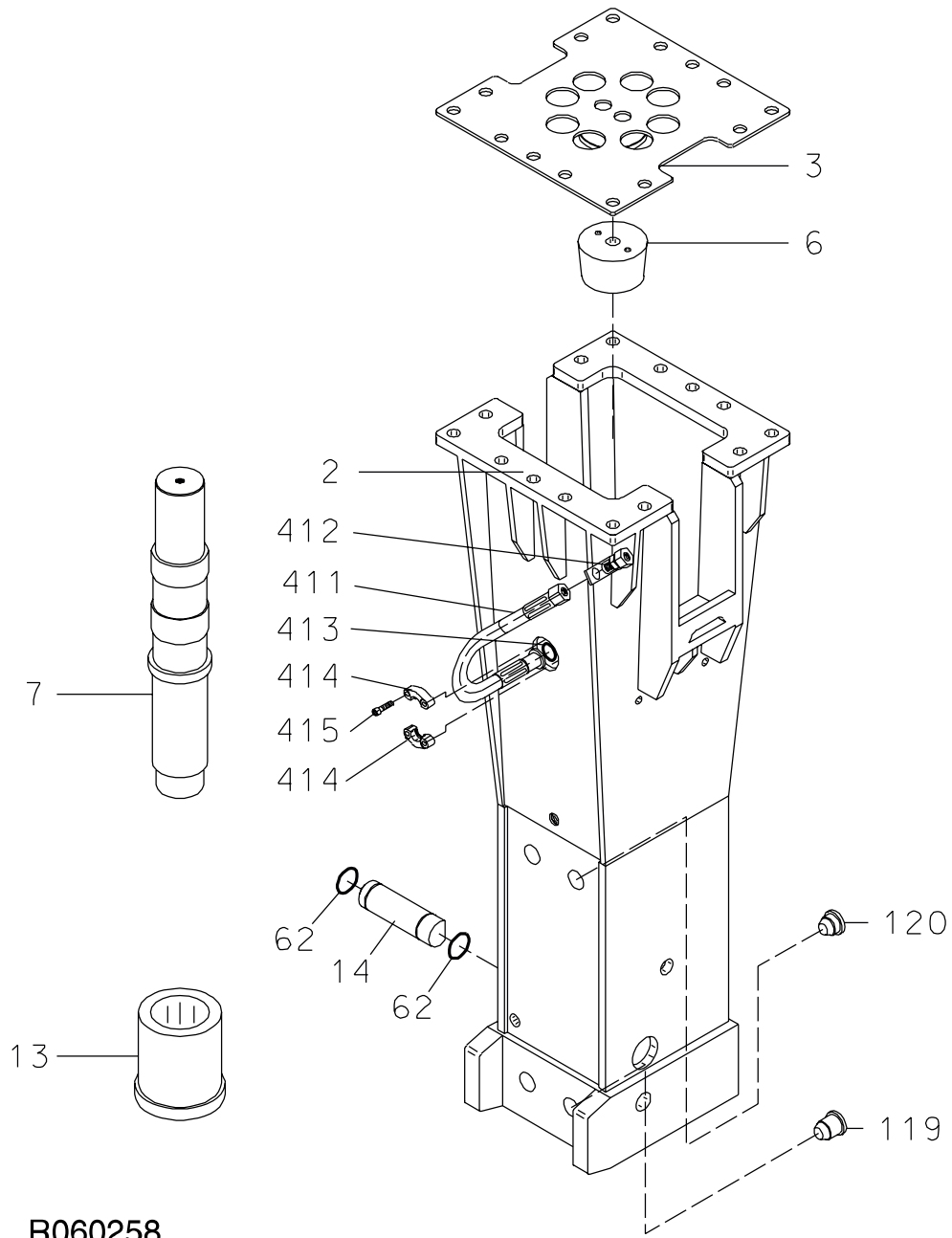
10. SEAL SET S 86



R060012

| Item | Name | Part no. | Specification | Note | Qty |
|------|-----------------------------|----------|---------------|------|-----|
| Kit | Seal set (incl. parts 1-24) | 42431 | | | 1 |
| 1 | Seal | 40588 | D209 | | 1 |
| 2 | Seal | 40589 | D37 | | 6 |
| 3 | Seal | 40388 | D26 | | 2 |
| 4 | Seal | 911002 | D160 | | 1 |
| 5 | Seal | 90063 | D142 | | 1 |
| 6 | Seal | 40590 | D140 | | 1 |
| 7 | O-ring | 90000 | D24 | | 1 |
| 8 | O-ring | 90032 | D119 | | 2 |
| 9 | O-ring | 90033 | D124 | | 6 |
| 10 | O-ring | 90034 | D259 | | 1 |
| 11 | O-ring | 90010 | D33 | | 1 |
| 12 | O-ring | 90009 | D38 | | 1 |
| 13 | O-ring | 90012 | D19 | | 1 |
| 14 | Wiper | 90064 | D142 | | 1 |
| 15 | Wiper | 913000 | D160 | | 1 |
| 16 | O-ring | 901173 | D27 | | 1 |
| 17 | Seal | 40536 | D144 | | 1 |
| 18 | Usit-ring | 90056 | | | 1 |
| 19 | O-ring | 90030 | D74 | | 1 |
| 20 | Seal | 40533 | D64 | | 1 |
| 21 | Seal | 40534 | D54 | | 1 |
| 22 | O-ring | 90031 | D46 | | 1 |
| 23 | O-ring | 90007 | D44 | | 1 |
| 24 | O-ring | 910006 | D23 | | 1 |

11. S 86 W-MODEL PARTS



| Item | Name | Part no. | Specification | Note | Qty |
|-------------|-------------------------------|-----------------|---|-------------|------------|
| 2 | Housing (incl. parts 119-120) | 31550 | | | 1 |
| 3 | Spacer plate | 31915 | | | 1 |
| 6 | Buffer | 42075 | | | 1 |
| 7 | Piston | 10548 | | | 1 |
| 13 | Bushing | 31549 | | | 1 |
| 14 | Pin | 41336 | | | 1 |
| 62 | O-ring | 90087 | D79 | | 2 |
| 119 | Pin | 41980 | | | 4 |
| 120 | Pin | 41979 | | | 4 |
| 411 | Hose | 93629 | 5723-12-12-/HI-78-12/ 5714-25-21 L = 680 | | 1 |
| 412 | Coupling | 93042 | SR25 DIN 2353 St-GT | | 1 |
| 413 | O-ring | 90008 | D25 | * | 1 |
| 414 | Split flange | 90404 | 251-12 3000 psi | | 2 |
| 415 | Hex. socket screw | 90504 | M10x30-8.8 DIN | | 4 |
| | *) Are included in seal set | | | | |

SANDVIK TAMROCK CORP.
Breakers Lahti
Taivalkatu 8, P.O. Box 165, FIN-15101 Lahti, Finland
Phone Int. +358 205 44 161, Telefax Int. +358 205 44 160
Internet <http://www.rammer.com>

87-40-14014-27-160-308
87-40-14014-36-76-189