

# Total Breaker Bits™

Allied's Mining and Construction Demolition Tools



**ALLIED**<sup>®</sup>  
Construction Products, LLC

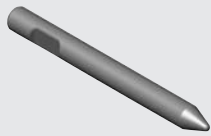
# Allied's TotalBreakerBits™ — conicals, pyramids, chisels, blunts and driving for a wide variety of hydraulic hammers

Allied Construction Products, LLC is now offering a new line of demolition tools called TotalBreakerBits™. The new demolition tool line represents a complete range of replacement demolition tool types including conicals, pyramids, chisels, blunts and driving for a wide variety of hydraulic hammers. This wide variety of hydraulic hammers includes brandname manufacturers like:

- Atlas Copco • Caterpillar/Balderson • Bobcat • Breaker Technology • Brokk • Contech • Chicago Pneumatic • Takahouchi/CXI • Dynatech
- Esco • Kent/Furukawa • JCB/Hammermaster • Magnum/Hanwoo • Hughes • Huskie/Izumi • Impulse • Indeco • John Deere • JRB/Toyo
- Kubota • Stanley/Melroe • Tramac/Montabert • NPK • Okada • Soosan • Terminator • Thomas • Toro Dingo • UB Equipment

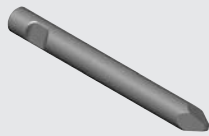
In addition to the manufacturers listed above, Allied also supplies demolition tools for all Rammer® and Hy-Ram® hydraulic hammers.

The first step to obtain the maximum life from the new TotalBreakerBits demolition tool product line is to select the proper demolition tool to match the requirements of the job to do. Outlined below are the illustrations and descriptions of the TotalBreakerBits demolition tools that are currently available.



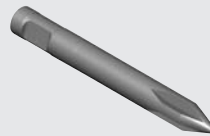
### Conical Point

Used for general demolition work where penetrative breaking is required.



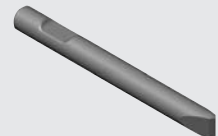
### Pyramid Point

Used for use where increased breakout forces are required.



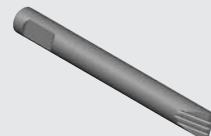
### X-Type Point

Used for use in soft or high dust operations.



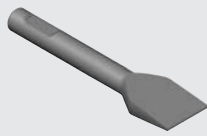
### Chisel

Used same as points, but also where a cutting action is required, like benching and trenching.



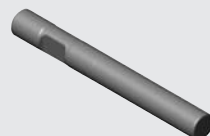
### Grooved Chisel

Used for use in soft or high dust applications.



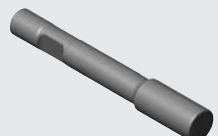
### Wide Chisel

Used for increased productivity in softer materials.



### Blunt

Used for impact breaking, secondary breaking and also scaling in mines and tunnels.



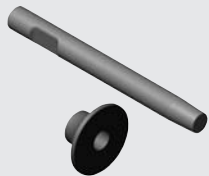
### Super Blunt

Used as Blunt but with larger diameter at working end to give increased life and wear-resistance.



### Driving Tool

Used for driving in posts, pipes, etc.



### Detachable Shanks and Pads

Used for compacting loose ground.

TotalBreakerBits utilize the latest machinery and technology to ensure finished products that comply with the highest of industry standards. TotalBreakerBits are distributed and serviced through more than 350 Allied Distributors throughout the United States, Canada and Mexico.

For sales and service, contact your Allied Distributor:

**ALLIED**  
Construction Products, LLC

3900 Kelley Avenue, Cleveland, Ohio 44114  
Tel: 216-431-2600 Fax: 216-431-2601  
e-mail: Sales@AlliedCP.com  
website: <http://www.AlliedCP.com>